

Montrose District



Graffiti Abatement Reports

August 2017

Montrose District

Monthly Graffiti Abatement Reports 2017

Abated	Jan	Feb	Mar	Apr	May	June	July	Aug	Sept	Oct	Nov	Dec	2017 Total
Business Property	79	30	38	47	43	73	50	39					399
Public Property	121	153	162	117	206	171	164	148					1242
Trash Dumpsters	1	8	6	16	12	10	7	2					62
Total:	201	191	206	180	261	254	221	189					1703

Graffiti Abatement Reports Totals 2008 - 2016											
	2008	2009	2010	2011	2012	2013	2014	2015	2016	2017	Totals
Abated											
Business Property	184	98	144	563	522	467	747	835	717	399	4,676
Public Property	538	771	935	1,802	1,724	1839	2356	2271	2081	1242	15,559
Trash Dumpsters	28	40	48	59	114	84	82	134	163	62	814
Total:	750	909	1,127	2,424	2,360	2,390	3,185	3,240	2,961	1,703	20,860

Improvement District # 6

Graffiti Abatement

Before and After Pictures

August 3, 2017

Private Property

before
20861

2300 Grant

after



before
20862

1322 Westheimer

after



Public Property

before
20863

2300 Grant

after



before
20864

2300 Grant

after



before
20865

1000 Jackson

after



before
20866

1302 Westheimer

after



1336 Westheimer

before

20867



after



3300 Mandell

before

20868



after



1500 Westheimer

before

20869



after



1500 Westheimer

before

20870



after



before

20871



1800 W Main

after



before

20872



1900 Peden

after



before

20873

1900 Peden

after



before

20874

1900 Peden

after



before
20875

1900 Peden

after



before
20876

1500 Driscoll

after



before

20877



900 W Drew

after



before

20878



900 W Drew

after



1900 Fairview

before

20879



after



Dumpsters

1200 Westheimer

before

20880



after



Improvement District # 6

Graffiti Abatement

Before and After Pictures

August 7, 2017

Private Property

1618 Westheimer

before

20881



after



1637 Westheimer

before

20882



after



1657 Westheimer

before

20883



after



1641 Westheimer

before

20884



after



1613 Westheimer

before

20885



after



1613 Westheimer

before

20886



after



1402 Westheimer

before

20887



after



1402 Westheimer

before

20888



after



1412 W Alabama

before

20889



after



1412 W Alabama

before

20890



after



1412 W Alabama

before

20891



after



1660 Westheimer

before

20892



after



2003 W Alabama

before

20893



after



2003 W Alabama

before

20894



after



2003 W Alabama

before

20895



after



Public Property

1600 Westheimer

before
20896



after



1700 Westheimer

before
20897



after



1000 California

before

20898



after



1100 W Alabama

before

20899



after



before
20900



1100 W Alabama

after



before
20901



1100 W Alabama

after



before
20902

1100 W Alabama

after



before
20903

1100 W Alabama

after



2003 W Alabama

before

20904



after



2003 W Alabama

before

20905



after



before

3800 McDuffie

after

20906



before

3800 McDuffie

after

20907



Improvement District # 6

Graffiti Abatement

Before and After Pictures

August 10, 2017

Private Property

before

20908

200 Westheimer

after



before

20909

200 Westheimer

after



Public Property

before

20910

600 Pacific

after



before

20911

200 Westheimer

after



before
20912

300 Westheimer

after



before
20913

300 Westheimer

after



2600 Dunlavy

before

20914



after



2600 Dunlavy

before

20915



after



2600 Dunlavy

before

20916



after



2600 Dunlavy

before

20917



after



2600 Dunlavy

before

20918



after



2600 Dunlavy

before

20919



after



before

20920

3000 Taft

after



before

20921

1300 Hawthorne

after



3500 Dunlavy

before

20922



after



3300 Mandell

before

20923



after



before

20924

4300 Hazard

after



before

20925

1000 Richmond

after



before

20926

1900 Commonwealth

after



before

20927

3100 S Shepherd

after



3100 S Shepherd

before

20928



after



3100 S Shepherd

before

20929



after



before

20930

3100 S Shepherd

after

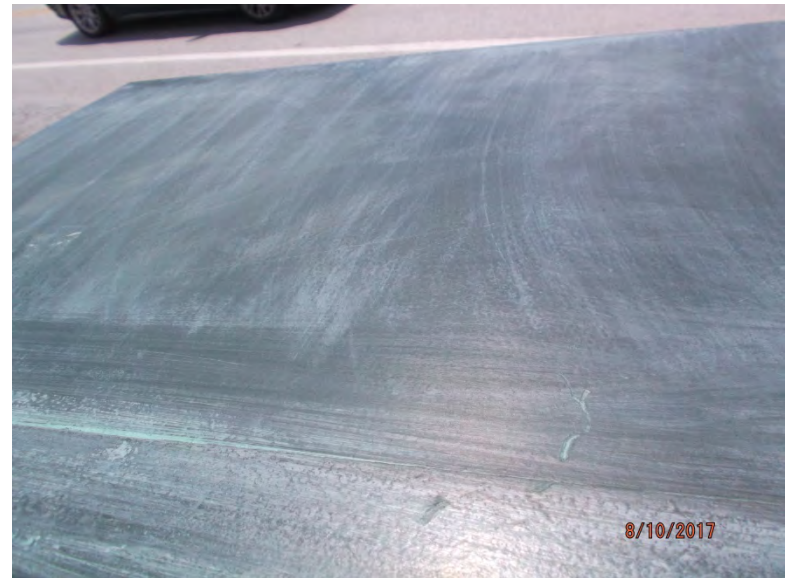


before

20931

3100 S Shepherd

after



before

20932



200 Grant

after



before

20933



200 Grant

after



Improvement District # 6

Graffiti Abatement

Before and After Pictures

August 14, 2017

Private Property

before

20934

3200 Taft

after



before

20935

3200 Taft

after



1427 Hawthorne

before

20936



after



2600 Dunlavy

before

20937



after



before

after



Public Property

before

20939

3200 Taft

after



before

20940

3200 Taft

after



before

20941

3100 Taft

after



before

20942

2600 Dunlavy

after



2600 Dunlavy

before

20943



after



2600 Dunlavy

before

20944



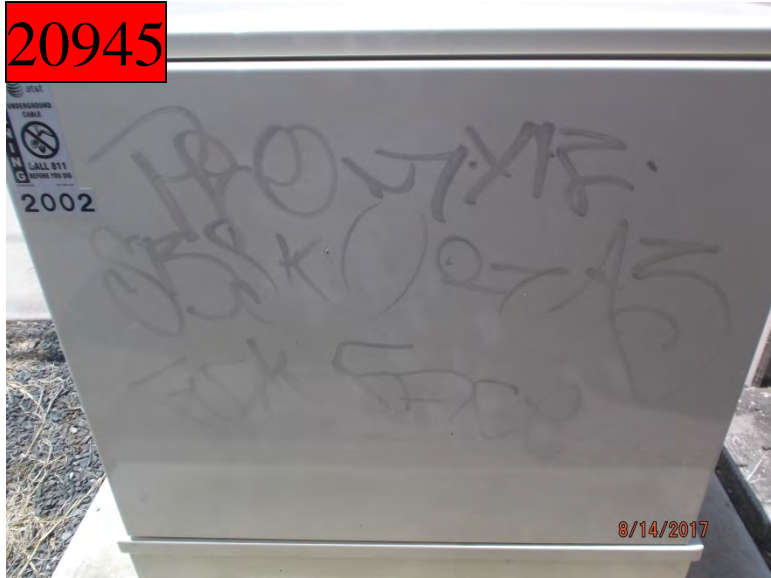
after



3900 McDuffie

before

20945



after



3900 McDuffie

before

20946



after



before

20947

3900 McDuffle

after



before

20948

4600 Graustark

after



1000 Richmond

before

20949



after



1000 Richmond

before

20950



after



before

200 West Gray

after

20951



before

200 West Gray

after

20952



before

20953

800 Welch

after



before

20954

800 Welch

after



Improvement District # 6

Graffiti Abatement

Before and After Pictures

August 17, 2017

Private Property

2000 Montrose

before

20955



after



700 W Gray

before

20956



after



Public Property

before

20957



600 Avondale

after



before

20958



1000 Lovett

after



2700 Ridgewood

before

20959



after



2700 Ridgewood

before

20960



after



before
20961

2600 Commonwealth

after



before
20962

2600 Commonwealth

after



before

20963

2700 Commonwealth

after



before

20964

1000 Welch

after



before

20965



1000 Welch

after



before

20966



1000 Welch

after



before

20967

2000 Montrose

after



before

20968

1500 Stanford

after



1200 Richmond

before

20969



after



1200 Richmond

before

20970



after



1900 Fairview

before

20971



after



1900 Fairview

before

20972



after



1800 W Alabama

before

20973



after



1800 W Alabama

before

20974



after



1800 W Alabama

before

20975



after



Improvement District # 6

Graffiti Abatement

Before and After Pictures

August 21, 2017

Private Property

1000 Jackson

before

20976



after



Public Property

before

20977

2300 Grant

after



before

20978

2200 Grant

after



before

20979



900 Fairview

after



before

20980



900 Fairview

after



before

20981

400 Lovett

after



before

20982

400 Lovett

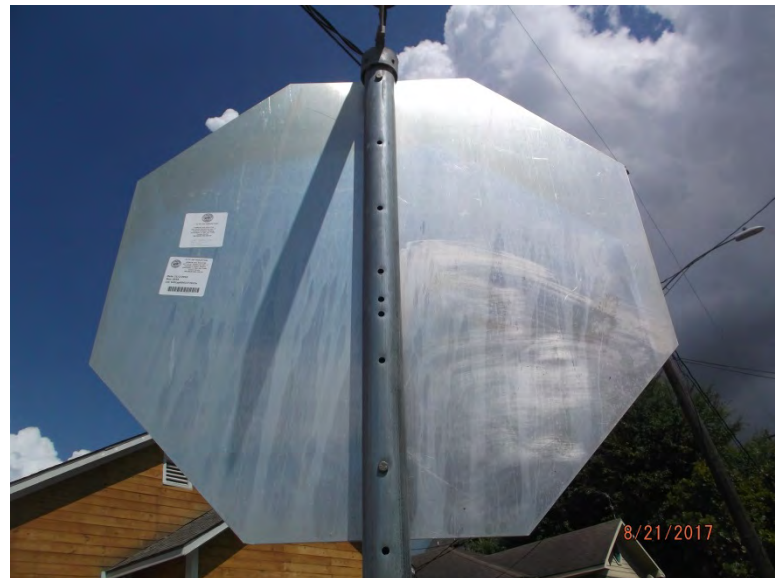
after



before
20983

800 Fairview

after



before
20984

4500 Graustark

after



4600 Graustark

before

20985



after



4600 Graustark

before

20986



after



900 Woodrow

before

20987



after



2100 Park St

before

20988



after



2200 Dunlavy

before

20989



after



2200 Dunlavy

before

20990



after



before
20991

300 W Gray

after



before
20992

300 W Gray

after



before
20993

300 W Gray

after



before
20994

300 W Gray

after



before

20995

300 W Gray

after



Improvement District # 6

Graffiti Abatement

Before and After Pictures

August 24, 2017

Private Property

1600 Westheimer

before

20996



after



1600 Westheimer

before

20997



after



1600 Westheimer

before

20998



after



1400 Westheimer

before

20999



after



before

21000



2300 Grant

after



before

21001



2100 Shepherd

after



before

21002

900 Fairview

after



before

21003

900 Fairview

after



before

21004

2000 Harold

after



Public Property

1400 Westheimer

before

21005



after



1900 Fairview

before

21006



after



4100 Mandell

before

21007



after



900 Hyde Park

before

21008



after



800 Hyde Park

before

21009



after



900 Hyde Park

before

21010



after



before

21011

2200 Grant

after



before

21012

2200 Grant

after



1000 Fairview

before

21013



after



1100 Fairview

before

21014



after



1900 Vermont

before

21015



after



1000 Jackson

before

21016



after



before

21017



1800 Morse

after



before

21018



2100 Shepherd

after



before

21019

2000 Indiana

after

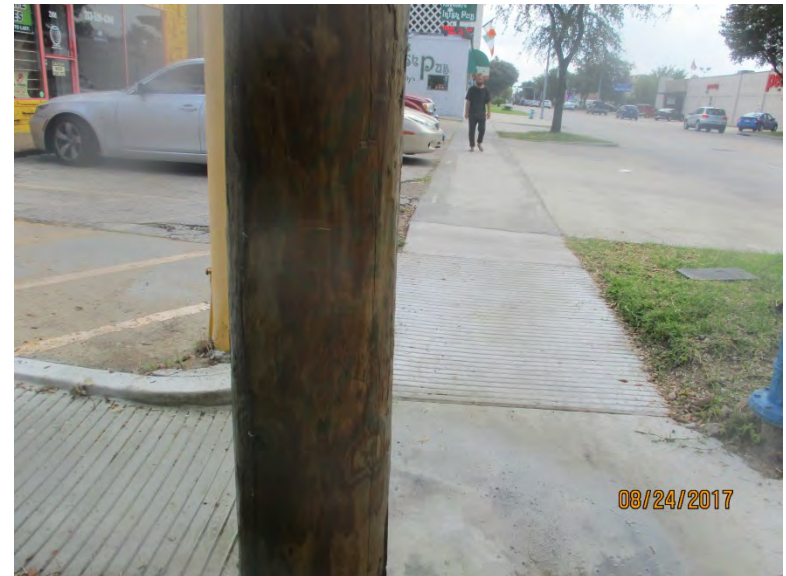


before

21020

2000 Indiana

after



before
21021

2000 Indiana

after



before
21022

2000 Harold

after



before
21023

2100 Kipling

after



before
21024

1000 California

after



Dumpsters

1600 Westheimer

before

21025



after



Improvement District # 6

Graffiti Abatement

Before and After Pictures

September 1, 2017

Private Property

before
21026

1100 La Rue

after



before
21027

1100 La Rue

after



before

21028



1100 La Rue

after



Public Property

before
21029

1000 W Drew

after



before
21030

1000 W Drew

after



before

21031



1000 W Drew

after



before

21032



1000 W Drew

after



before

21033

1000 W Drew

after



before

21034

1600 Hawthorne

after



1400 Westheimer

before

21035



after



1400 Westheimer

before

21036



after



3300 Graustark

before

21037



after



3300 Graustark

before

21038



after



3300 Graustark

before

21039



after



1600 Westheimer

before

21040



after



2500 Dunlavy

before
21041



after



2500 Dunlavy

before
21042



after



2500 Dunlavy

before

21043



after



2500 Dunlavy

before

21044



after



1200 Westheimer

before

21045



after



4400 Yupon

before

21046



after



before
21047

1300 W Clay

after



before
21048

900 W Drew

after



1500 Stanford

before

21049



after

