

Montrose District



Graffiti Abatement Reports

September 2016

Montrose District

Monthly Graffiti Abatement Reports 2016

Abated	Jan	Feb	Mar	Apr	May	June	July	Aug	Sept	Oct	Nov	Dec	2016 Total
Business Property	61	83	78	48	72	96	78	50	39				605
Public Property	231	197	171	157	144	197	137	194	161				1589
Trash Dumpsters	26	10	17	17	15	7	10	18	12				132
Total:	318	290	266	222	231	300	225	262	212				2326

Graffiti Abatement Reports Totals 2008 - 2016										
	2008	2009	2010	2011	2012	2013	2014	2015	2016	Totals
Abated										
Business Property	184	98	144	563	522	467	747	835	605	4,165
Public Property	538	771	935	1,802	1,724	1839	2356	2271	1589	13,825
Trash Dumpsters	28	40	48	59	114	84	82	134	132	721
Total:	750	909	1,127	2,424	2,360	2,390	3,185	3,240	2,326	18,711

Improvement District # 6

Graffiti Abatement

Before and After Pictures

September 1, 2016

Private Property

before

2200 Montrose

after

18500

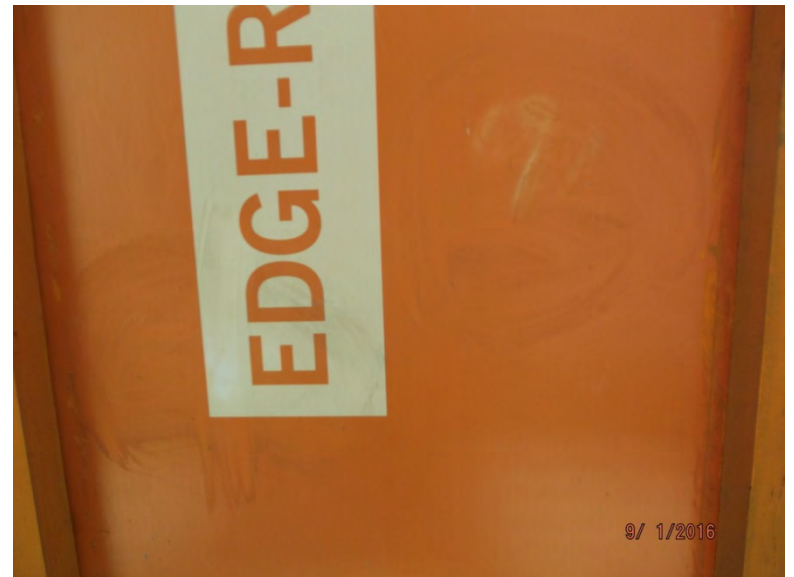


before

2200 Montrose

after

18501



Public Property

1500 Stanford

before

18502



after



1500 Stanford

before

18503



after



1500 Stanford

before

18504



after



1500 Stanford

before

18505



after



2200 Montrose

before

18506



after



700 Pacific

before

18507



after



before
18508

700 W Gray

after



before
18509

2600 Hopkins

after



2400 Dunlavy

before

18510



after



1300 Westheimer

before

18511



after



1300 Westheimer

before

18512



after



1300 Westheimer

before

18513



after



1300 Westheimer

before

18514



after



1500 Westheimer

before

18515



after



1500 Westheimer

before

18516



after



before

3900 McDuffie

after

18517



before

3900 McDuffie

after

18518



before
18519

3900 McDuffie

after



before
18520

3900 McDuffie

after



3900 McDuffie

before

18521



after



2000 Waugh

before

18522



after



before

18523



1100 Harold

after



before

18524



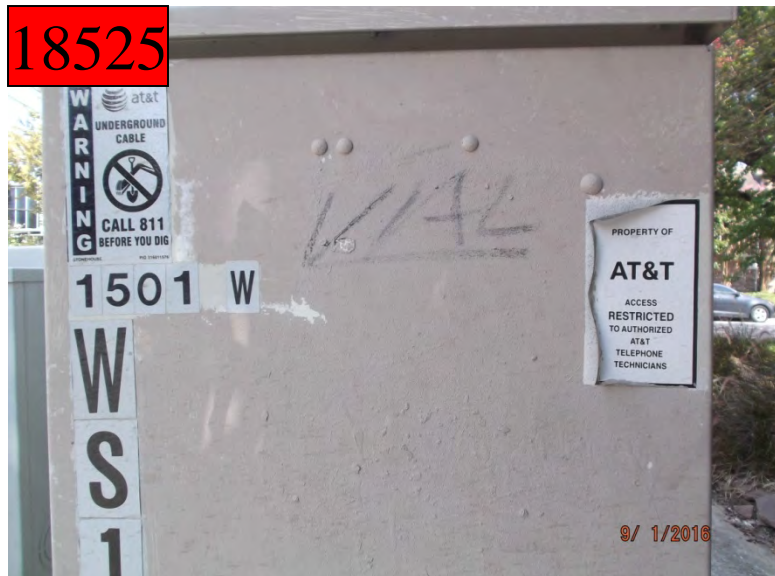
2000 Taft

after



before

18525



1500 Welch

after



before

18526



1500 Welch

after



Improvement District # 6

Graffiti Abatement

Before and After Pictures

September 6, 2016

Private Property

before

1400 Hawthorne

after

18527



before

1400 Hawthorne

after

18528



1400 Hawthorne

before

18529



after



1400 Hawthorne

before

18530



after



1400 Hawthorne

before

18531



after



1400 Hawthorne

before

18532



after



1600 Westheimer

before

18533



after



1600 Westheimer

before

18534



after



1600 Westheimer

before

18535



after



1800 Montrose

before

18536



after



Public Property

2600 Whitney

before

18537



after



2600 Whitney

before

18538



after



before

18539

700 Fargo

after



before

18540

400 Stratford

after



before

18541

3300 Taft

after



before

18542

3300 Taft

after



before

18543



900 Marshall

after



before

18544



900 Marshall

after



3300 Graustark

before

18545



after



3300 Graustark

before

18546



after



3300 Graustark

before

18547



after



3300 Graustark

before

18548



after



1600 Westheimer

before

18549



after



1600 Westheimer

before

18550



after



1600 Westheimer

before

18551



after



4200 Hazard

before

18552



after



before

18553

1900 Waugh

after



before

18554

1900 Waugh

after



1400 California

before

18555



after



1300 Missouri

before

18556



after



Improvement District # 6

Graffiti Abatement

Before and After Pictures

September 8, 2016

Private Property

2605 Dunlavy

before

18557



after



2605 Dunlavy

before

18558



after



2605 Dunlavy

before

18559



after



2605 Dunlavy

before

18560



after



1214 Westheimer

before

18561



after



2605 Dunlavy

before

18562



after



Public Property

1100 California

before

18563



after



1100 California

before

18564



after



2600 Dunlavy

before

18565



after



2600 Dunlavy

before

18566



after



2600 Dunlavy

before

18567



after



2600 Dunlavy

before

18568



after



2600 Dunlavy

before

18569



after



2600 Dunlavy

before

18570



after



2600 Dunlavy

before

18571



after



1200 Westheimer

before

18572



after



1200 Westheimer

before

18573



after



1200 Westheimer

before

18574



after



3800 Shepherd

before

18575



after



3800 Shepherd

before

18576



after



2400 W Dallas

before

18577



after



2600 Montrose

before

18578



after



before

18579

2900 Dallas

after



before

18580

2900 Dallas

after



1900 Westheimer

before

18581



after



1900 Westheimer

before

18582



after



2000 Westheimer

before
18583



after



2000 Westheimer

before
18584



after



1200 Westheimer

before

18585



after



1200 Westheimer

before

18586



after



1800 Westheimer

before

18587



after



1800 Westheimer

before

18588



after



before
18589

1800 Westheimer

after



before
18590

1800 Westheimer

after



1700 California

before

18591



after



1700 California

before

18592



after



1400 Westheimer

before

18593



after



1500 Westheimer

before

18594



after



1900 W Dallas

before

18595



after



Dumpsters

1203 Westheimer

before

18596



after



1203 Westheimer

before

18597



after



Improvement District # 6

Graffiti Abatement

Before and After Pictures

September 12, 2016

Private Property

2000 Westheimer

before
18598



after



1665 Westheimer

before
18599



after



1665 Westheimer

before

18600



after



1665 Westheimer

before

18601



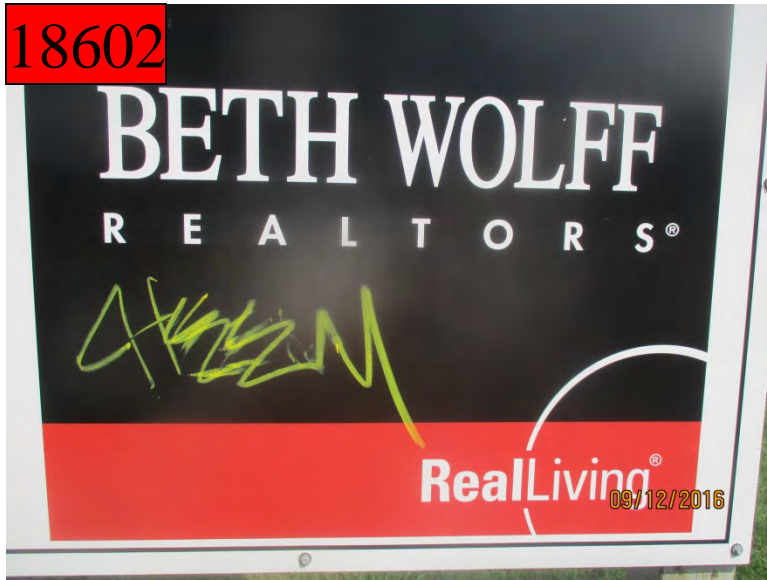
after



1300 Dunlavy

before

18602



after



Public Property

2000 Westheimer

before

18603



after



2000 Westheimer

before

18604



after



1600 Westthierner

before

18605



after



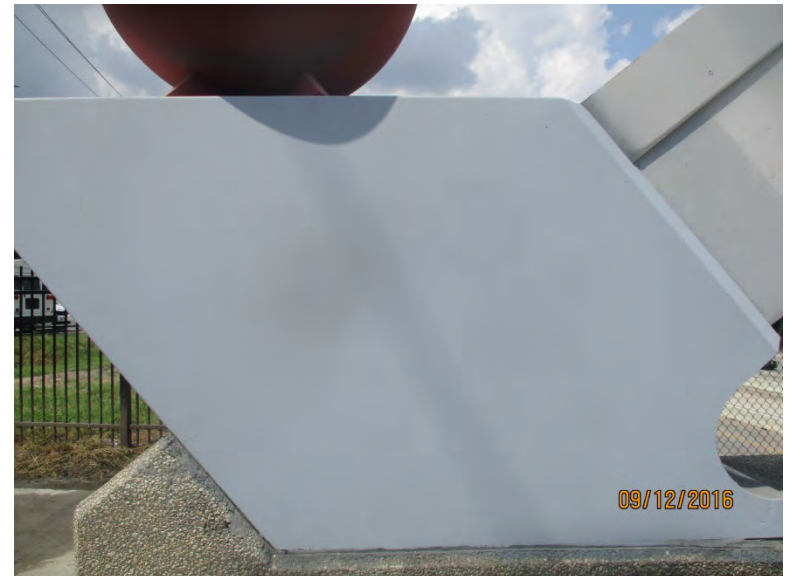
4600 Montrose

before

18606



after



before

18607

4600 Montrose

after



before

18608

4600 Montrose

after



before

18609

4600 Montrose

after



before

18610

4600 Montrose

after



1000 Barkdull

before

18611



after



1000 Bartlett

before

18612



after

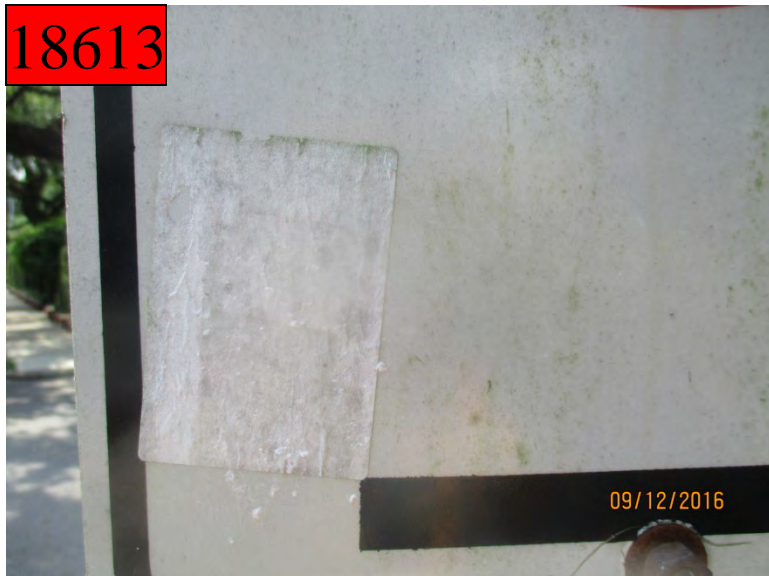


before

18613

1100 Berthea

after



before

18614

1100 Berthea

after



before

18615

1100 Berthea

after



before

18616

700 Chelsea

after



2500 Shepherd

before

18617



after



2000 W Alabama

before

18618



after



2000 W Alabama

before

18619



after



2000 W Alabama

before

18620



after



1600 Richmond

before

18621



after



1600 Richmond

before

18622



after



2300 Dunlavy

before

18623



after



1300 W Gray

before

18624



after



Dumpsters

2300 Dunlavy

before

18625



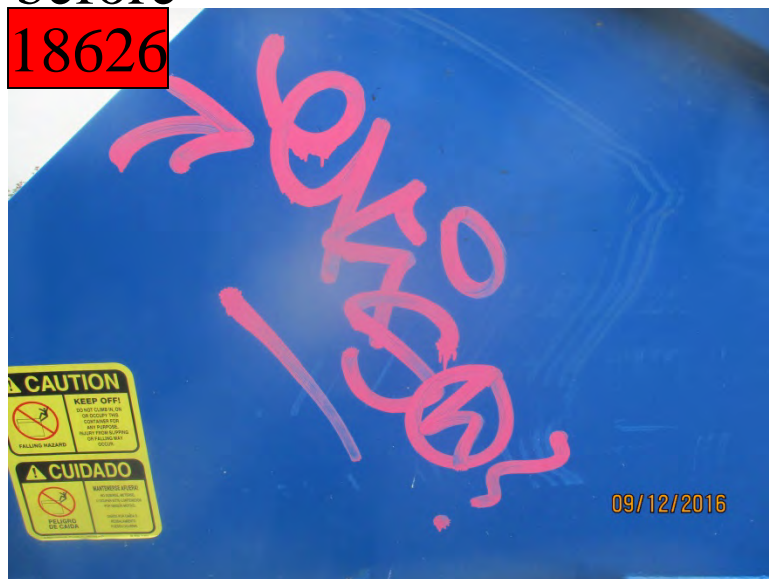
after



2300 Dunlavy

before

18626



after



2300 Dunlavy

before

18627



after



Improvement District # 6

Graffiti Abatement

Before and After Pictures

September 15, 2016

Private Property

503 Westheimer

before

18628



after



1322 Westheimer

before

18629



after



2620 S Shepherd

before

18630



after



Public Property

3300 Whitney

before

18631



after



3105 S Shepherd

before

18632



after



before

18633



3105 S Shepherd

after



before

18634



3105 S Shepherd

after



before
18635



3105 S Shepherd

after



before
18636



2003 W Alabama

after



2003 W Alabama

before

18637



after



2003 W Alabama

before

18638



after



2003 W Alabama

before

18639



after



300 Westheimer

before

18640



after



Dumpsters

before

18641



2612 S Shepherd

after



Improvement District # 6

Graffiti Abatement

Before and After Pictures

September 19, 2016

Private Property

1318 Westheimer

before

18642



after



1845 Missouri

before

18643



after



1627 Westheimer

before

18644



after



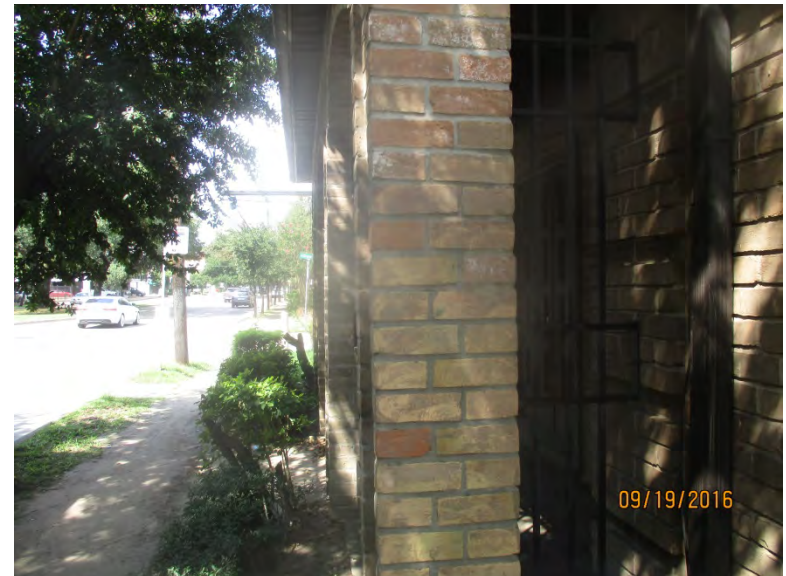
2205 Montrose

before

18645



after



before

18646



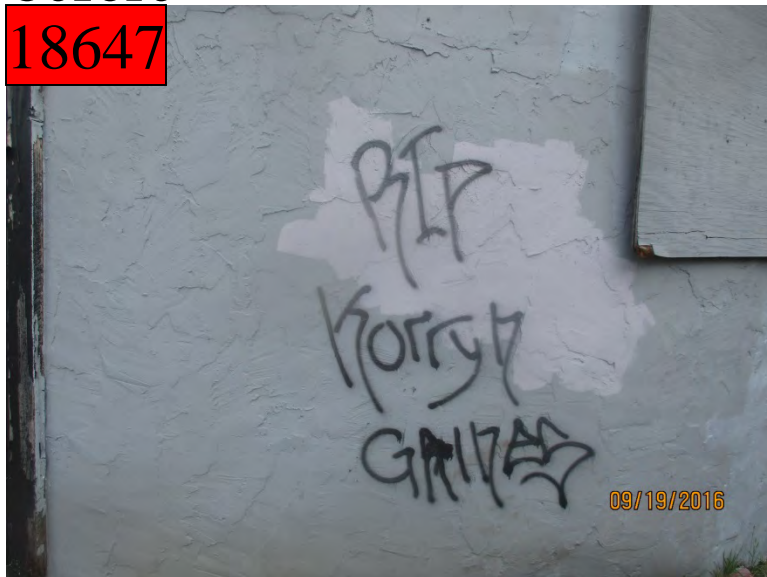
202 Tuam

after



before

18647



202 Tuam

after



before

18648

202 Tuam

after



Public Property

before

18649



3100 Bagby

after



before

18650



3100 Montrose

after



2400 Dunlavy

before

18651



after



2600 Shepherd

before

18652



after



1700 W Alabama

before

18653



after



900 Harold

before

18654



after



before

3300 Montrose

after

18655



before

3300 Montrose

after

18656



before

18657

3300 Montrose

after



before

18658

3300 Montrose

after



before

4100 Montrose

after

18659



before

4100 Montrose

after

18660



4100 Montrose

before

18661



after



4100 Yoakum

before

18662



after



before

18663

5200 Montrose

after



before

18664

5200 Montrose

after



5200 Montrose

before

18665



after



2100 Grant

before

18666



after



before

2100 Montrose

after

18667



before

2100 Montrose

after

18668



2100 Montrose

before

18669



after



Dumpsters

106 Westheimer

before

18670



after



3417 Montrose

before

18671



after



5216 Montrose

before

18672



after



Improvement District # 6

Graffiti Abatement

Before and After Pictures

September 22, 2016

Private Property

before

18673

4205 Woodhead

after



Public Property

1800 Richmond

before

18674



after



2025 Fairview

before

18675



after



1900 Fairview

before

18676



after



2000 Westheimer

before

18677



after



before

18678



1300 Waugh

after



before

18679



1400 Waugh

after



1600 Westheimer

before

18680



after



4400 Mandell

before

18681



after



4400 Mandell

before

18682



after



4200 Dunlavy

before

18683



after



before

18684

800 Chelsea

after



Improvement District # 6

Graffiti Abatement

Before and After Pictures

September 27, 2016

Public Property

1000 Westheimer

before

18685



after



1700 Dunlavy

before

18686



after



before

1900 W Gray

after

18687



before

1700 Dunlavy

after

18688



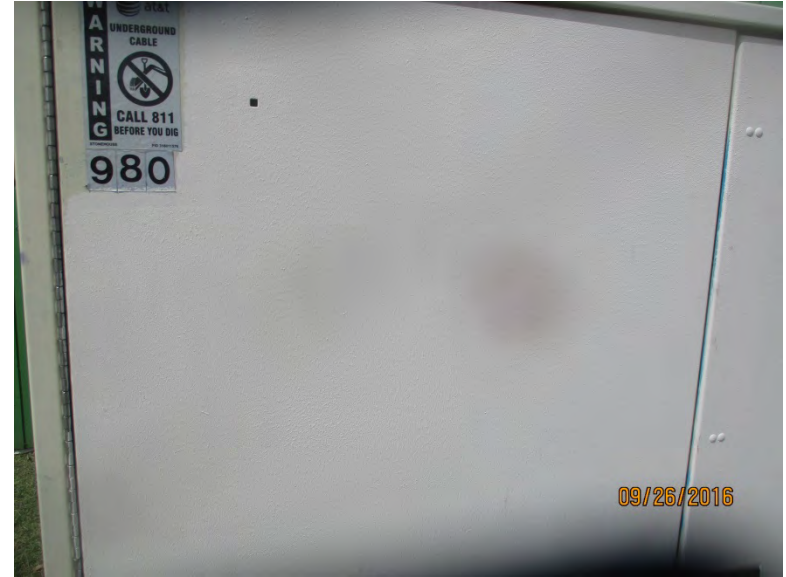
2400 W Dallas

before

18689



after



2700 Yupon

before

18690



after



1100 Kenwood

before

18691



after



3900 Brandt

before

18692



after



Dumpsters

before

18693

1937 W Gray

after



Improvement District # 6

Graffiti Abatement

Before and After Pictures

September 29, 2016

Private Property

1801 Richmond

before

18694



after



1801 Richmond

before

18695



after



302 Avondale

before

18696



after



2615 Montrose

before

18697



after



1111 Montrose

before

18698



after



Public Property

before

18699

4300 Hazard

after

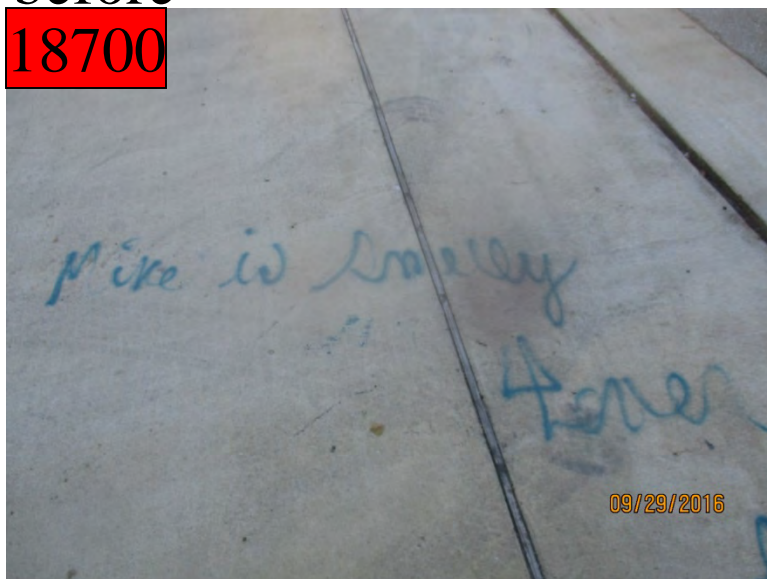


before

18700

4300 Hazard

after



before
18703



before
18704

after



2800 W Dallas

before

18705



after



1000 Taft

before

18706



after



before

18707

1000 Taft

after



before

18708

2500 Grant

after



2500 Montrose

before

18709



after



Dumpsters

before

18710



4012 Hazard

after



before

18711



4012 Hazard

after

