

Montrose District



Graffiti Abatement Reports

October 2016

Montrose District

Monthly Graffiti Abatement Reports 2016

Abated	Jan	Feb	Mar	Apr	May	June	July	Aug	Sept	Oct	Nov	Dec	2016 Total
Business Property	61	83	78	48	72	96	78	50	39	56			661
Public Property	231	197	171	157	144	197	137	194	161	129			1718
Trash Dumpsters	26	10	17	17	15	7	10	18	12	10			142
Total:	318	290	266	222	231	300	225	262	212	195			2521

Graffiti Abatement Reports Totals 2008 - 2016										
	2008	2009	2010	2011	2012	2013	2014	2015	2016	Totals
Abated										
Business Property	184	98	144	563	522	467	747	835	661	4,221
Public Property	538	771	935	1,802	1,724	1839	2356	2271	1718	13,954
Trash Dumpsters	28	40	48	59	114	84	82	134	142	731
Total:	750	909	1,127	2,424	2,360	2,390	3,185	3,240	2,521	18,906

Improvement District # 6

Graffiti Abatement

Before and After Pictures

October 3, 2016

Private Property

before

18712

302 Tuam

after



before

18713

302 Tuam

after



2205 Montrose

before

18714



after



Public Property

1900 Fairview

before

18715



after



1400 Richmond

before

18716



after



4790 Montrose

before

18717



after



4790 Montrose

before

18718



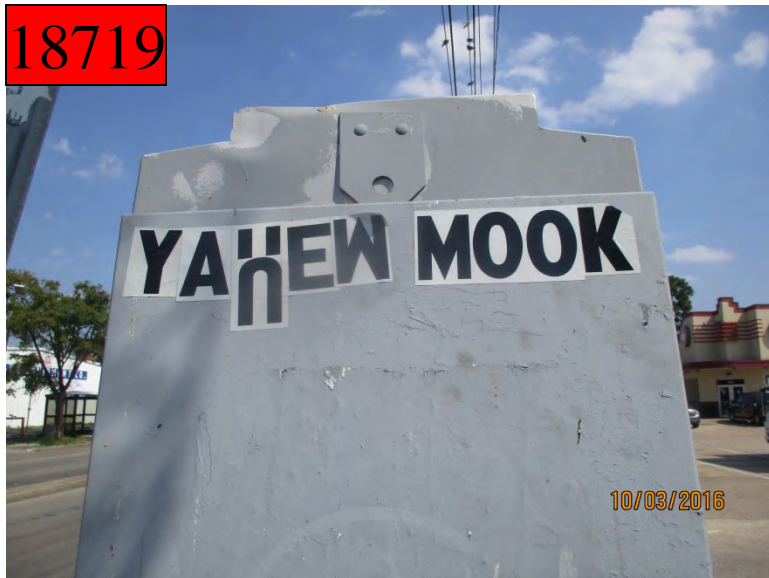
after



2000 Richmond

before

18719



after



Dumpsters

before

719 W Gray

after



Improvement District # 6

Graffiti Abatement

Before and After Pictures

October 6, 2016

Private Property

before

18721



1302 W Gray

after



before

18722



702 W Gray

after



before

18723



1112 Autrey

after



before

18724



4720 Montrose

after



Public Property

before

18725



1200 W Gray

after



before

18726



1100 W Gray

after



1500 Marconi

before

18727



after



500 W Gray

before

18728



after



before

18729



700 W Gray

after



before

18730



700 W Gray

after



before

18731

700 W Gray

after



before

18732

2000 Richmond

after



before

18733



1700 Huldý

after



before

18734



1700 Huldý

after



before

18735



1100 Banks

after



before

18736



1100 Banks

after



4700 Yoakum

before

18737



after



1100 Autrey

before

18738



after



before

18739



1000 Banks

after



before

18740



1000 Banks

after



before

18741



1000 Banks

after



before

18742



1000 Banks

after



before

1100 Bissonnet

after

18743



before

1100 Bissonnet

after

18744



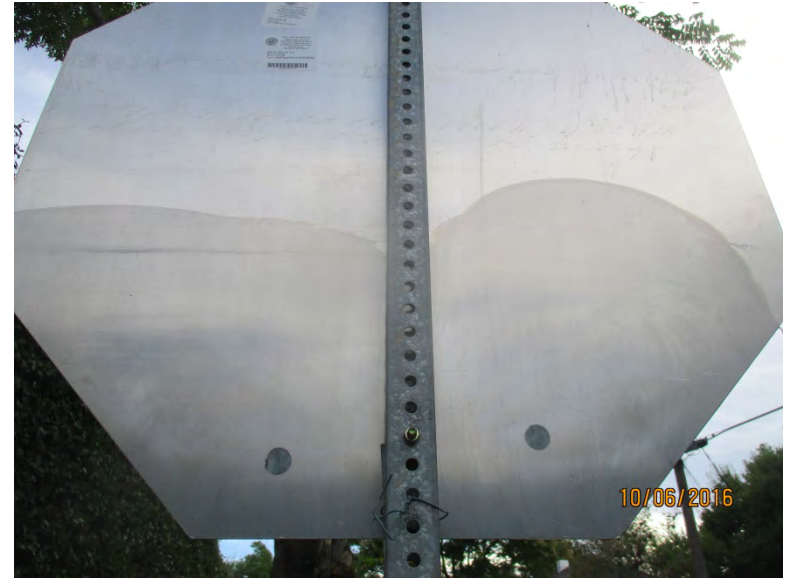
5200 Yoakum

before

18745



after



5200 Yoakum

before

18746



after



Improvement District # 6

Graffiti Abatement

Before and After Pictures

October 10, 2016

Private Property

before

18747

1400 Hawthorne

after



before

18748

1400 Hawthorne

after



before
18749

1400 Hawthorne

after



before
18750

1400 Hawthorne

after



1400 Hawthorne

before

18751



after



1400 Hawthorne

before

18752



after



1400 Hawthorne

before

18753



after



2300 Park

before

18754



after



before

18755

300 W Polk

after



Public Property

before

2000 Montrose

after

18756



before

2000 Montrose

after

18757



2000 Montrose

before

18758



after



2000 Montrose

before

18759



after



before
18760

2000 Montrose

after



before
18761

2000 Montrose

after



2000 Montrose

before

18762



after



800 Welch

before

18763



after



3400 Mulberry

before

18764



after



3400 Mulberry

before

18765



after



3200 Stanford

before

18766



after



4200 Woodhead

before

18767



after



before

18768

2300 Park

after

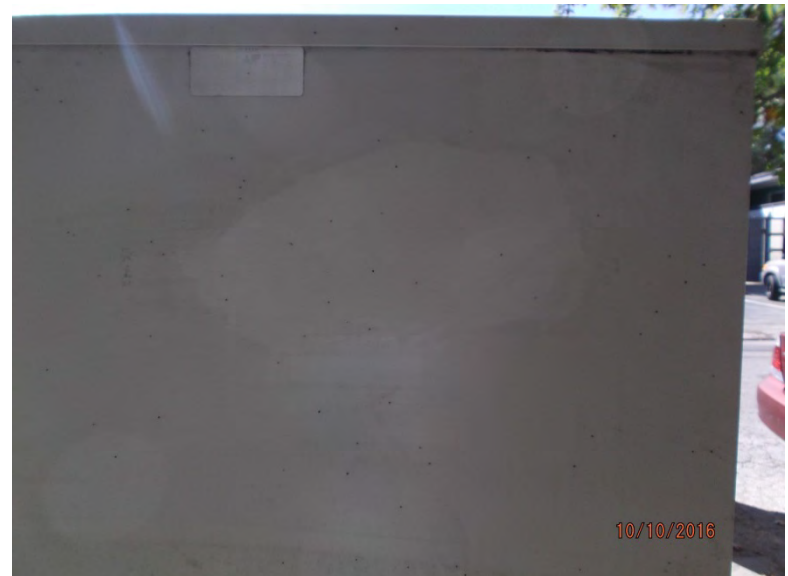


before

18769

2300 Park

after



1400 Fairview

before

18770



after



1400 Eberhard

before

18771



after



Improvement District # 6

Graffiti Abatement

Before and After Pictures

October 13, 2016

Private Property

1639 Westheimer

before

18772



after



1639 Westheimer

before

18773



after



1639 Westheimer

before

18774



after



1639 Westheimer

before

18775



after



1639 Westheimer

before

18776



after



1639 Westheimer

before

18777



after



1639 Westheimer

before

18778



after



1639 Westheimer

before

18779



after



1643 Westheimer

before

18780



after



1643 Westheimer

before

18781



after



1643 Westheimer

before

18782



after



1411 Hawthorne

before

18783



after



Dumpsters

1639 Westheimer

before

18784



after



1639 Westheimer

before

18785



after



1639 Westheimer

before

18786



after



1639 Westheimer

before

18787



after



before

18788



3618 S Shepherd

after



Improvement District # 6

Graffiti Abatement

Before and After Pictures

October 17, 2016

Private Property

before

18789



3520 Garrett

after



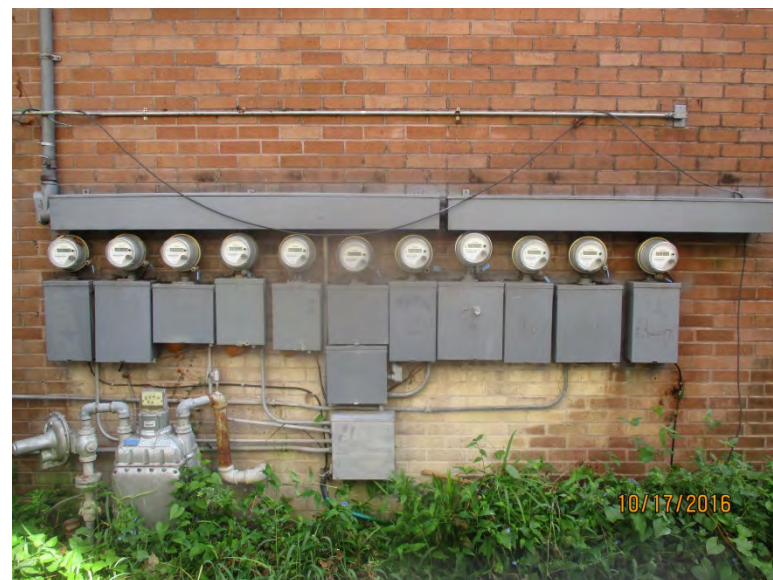
before

18790



3520 Garrett

after

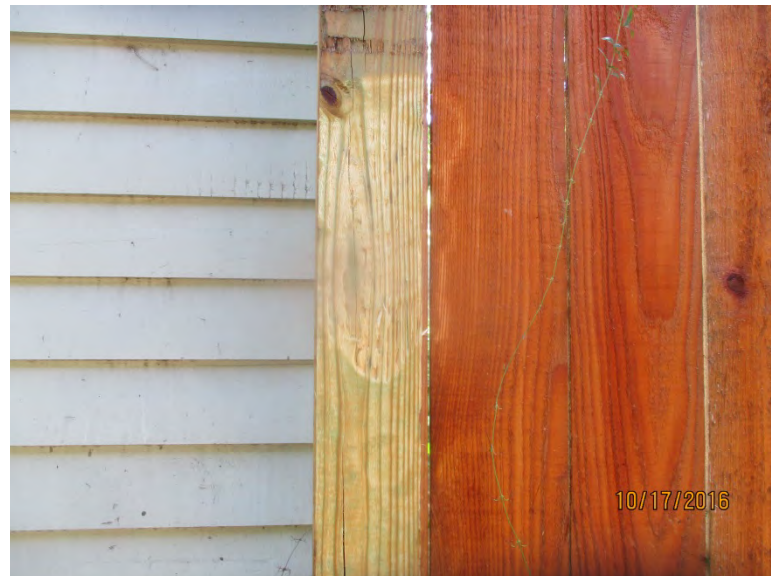


before

18791

3416 Garrett

after

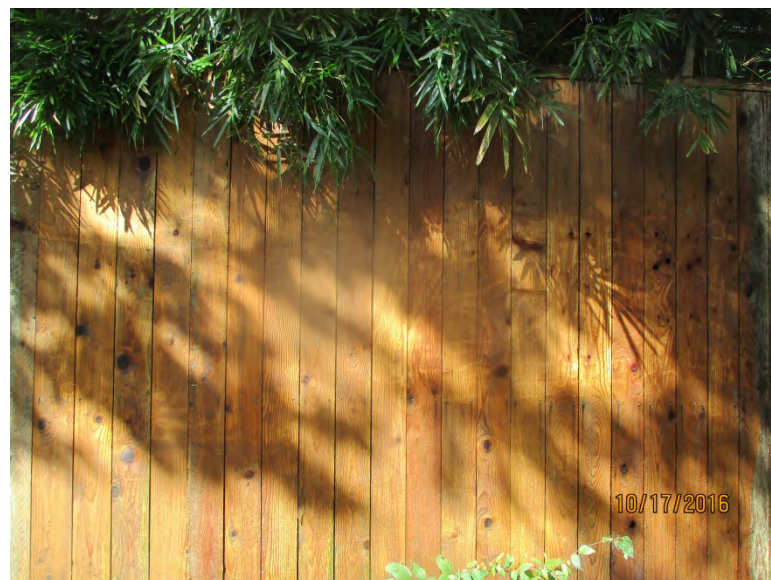


before

18792

3419 Audubon

after



before

18793

3416 Garrett

after



before

18794

3416 Garrett

after



before

18795

3416 Garrett

after



before

18796

3402 Garrett

after



1638 Westheimer

before

18797



after



1638 Westheimer

before

18798



after



1638 Westheimer

before

18799



after



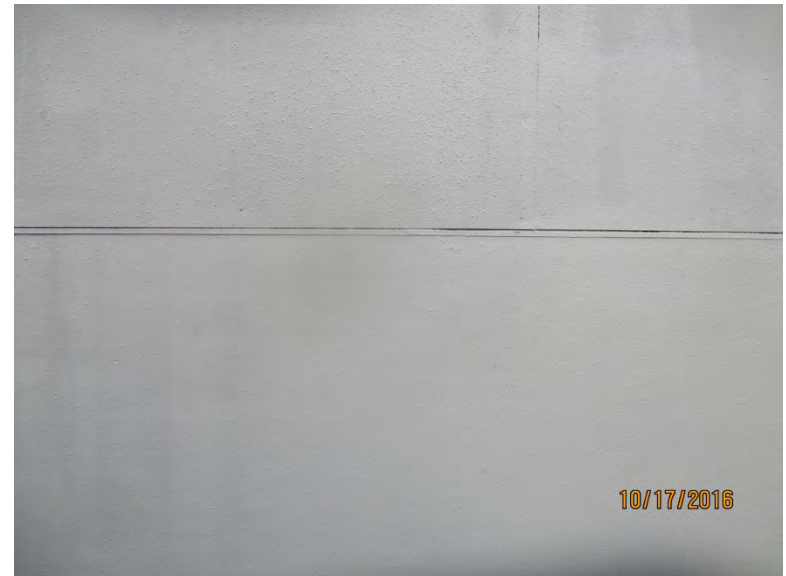
2200 Montrose

before

18800



after



Public Property

before

18801

2800 Taft

after



before

18802

1300 Westheimer

after



3300 Mt Vernon

before

18803



after



3300 Mt Vernon

before

18804



after



before

18805

2300 Montrose

after



before

18806

2300 Montrose

after



before

1400 Montrose

after

18807



before

1400 Montrose

after

18808



1600 Westheimer

before

18809



after



Dumpsters

1717 Montrose

before

18810



after



Improvement District # 6

Graffiti Abatement

Before and After Pictures

October 21, 2016

Private Property

516 Westheimer

before

18811



after



Public Property

500 Westheimer

before

18812



after



500 Westheimer

before

18813



after



before

600 Westheimer

after

18814



before

1700 Commonwealth

after

18815



before

18816

3300 Taft

after



before

18817

3300 Taft

after



1900 Vermont

before

18818



after



2000 Vermont

before

18819



after



2300 Montrose

before

18820



after



2300 Montrose

before

18821



after



2300 Montrose

before

18822



after



Improvement District # 6

Graffiti Abatement

Before and After Pictures

October 22, 2016

Public Property

3400 Stanford

before

18823



after



3400 Stanford

before

18824



after



before

18825

4400 Kyle

after



before

18826

1800 Kipling

after



900 Woodrow

before

18827



after



900 Woodrow

before

18828



after



before

18829



1400 Hawthorne

after



Improvement District # 6

Graffiti Abatement

Before and After Pictures

October 24, 2016

Private Property

1600 Westheimer

before

18830



after



1600 Westheimer

before

18831



after



1600 Westheimer

before

18832



after



1600 Westheimer

before

18833



after



1600 Westheimer

before

18834



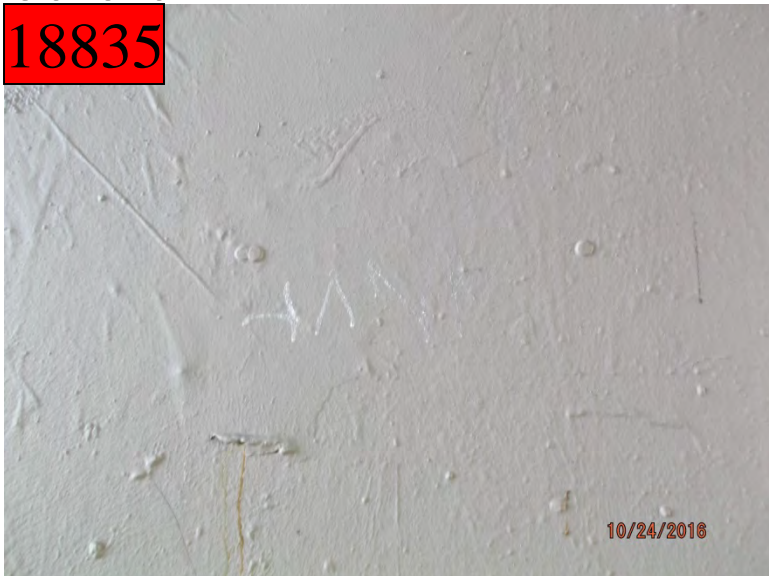
after



1600 Westheimer

before

18835



after



1600 Westheimer

before

18836



after



1600 Westheimer

before

18837



after



1600 Westheimer

before

18838



after



1600 Westheimer

before

18839



after



1600 Westheimer

before

18840



after



1600 Westheimer

before

18841



after



1600 Westheimer

before

18842



after



Public Property

1600 Westheimer

before
18843



after



1600 Westheimer

before
18844



after



1600 Westheimer

before

18845



after



1600 Westheimer

before

18846



after



before

1400 Michigan

after

18847



before

1400 Michigan

after

18848



before

18849

1400 Michigan

after



before

18850

1900 Dunlavy

after



before

18851



1900 Welch

after



before

18852



1900 Welch

after



2000 Dunlavy

before

18853



after



2000 Dunlavy

before

18854



after



3500 W Dallas

before

18855



after



3500 W Dallas

before

18856



after



Dumpsters

1600 Westheimer

before

18857



after



Improvement District # 6

Graffiti Abatement

Before and After Pictures

October 27, 2016

Private Property

before

18858



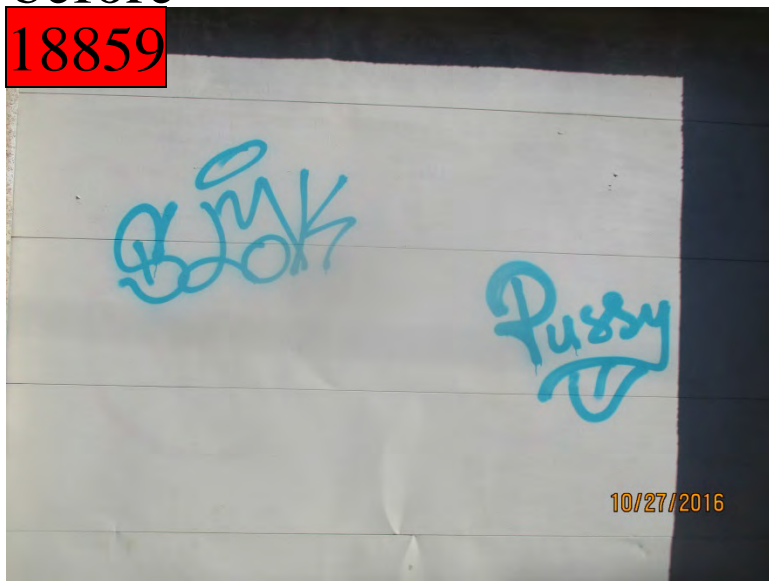
1336 W Clay

after



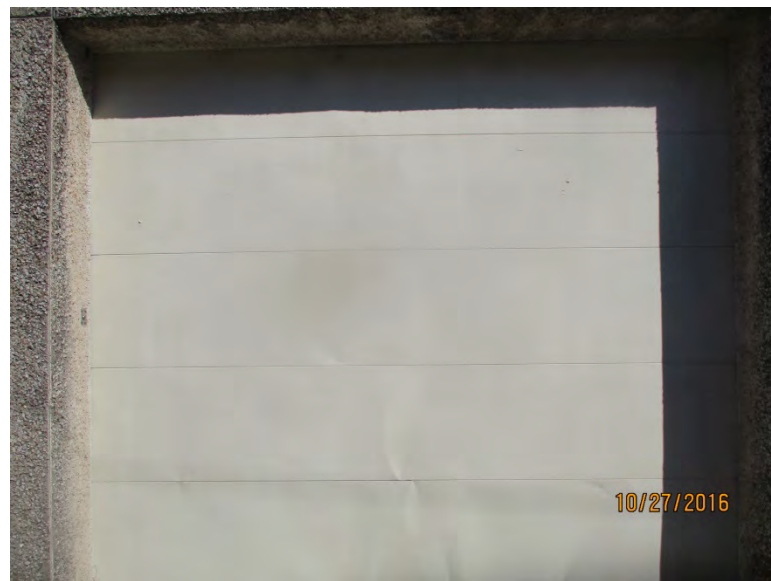
before

18859



1336 W Clay

after



Public Property

3400 W Dallas

before

18860



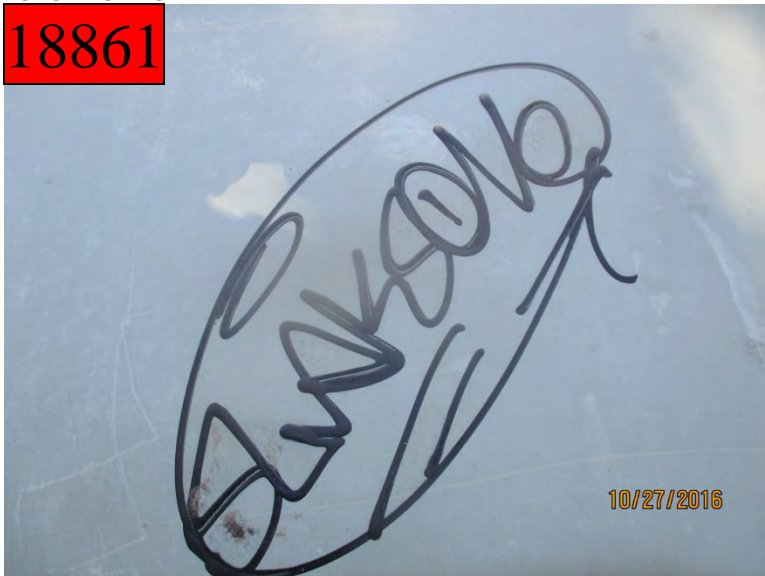
after



3400 W Dallas

before

18861



after



1400 Marconi

before

18862



after



1800 Waugh

before

18863



after



before

18864

1800 Waugh

after



before

18865

1800 Waugh

after



1500 Westheimer

before

18866



after



1800 California

before

18867



after



before

18868

1700 Commonwealth

after



before

18869

1800 Commonwealth

after



2000 Fairview

before

18870



after



2000 Westheimer

before

18871



after



4600 Montrose

before

18872



after



1700 Taft

before

18873



after



3100 S Shepherd

before

18874



after



Dumpsters

before

1308 Montrose

after

18875



before

1308 Montrose

after

18876



Improvement District # 6

Graffiti Abatement

Before and After Pictures

October 31, 2016

Public Property

1400 Westheimer

before

18877



after



1400 Westheimer

before

18878



after



1300 Westheimer

before

18879



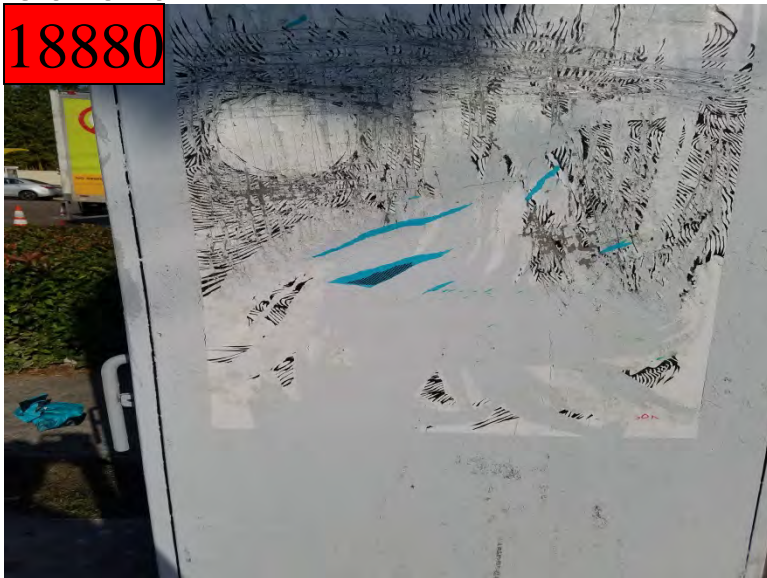
after



1300 Westheimer

before

18880



after



1500 Westthiemer

before

18881



after



5300 Mandell

before

18882



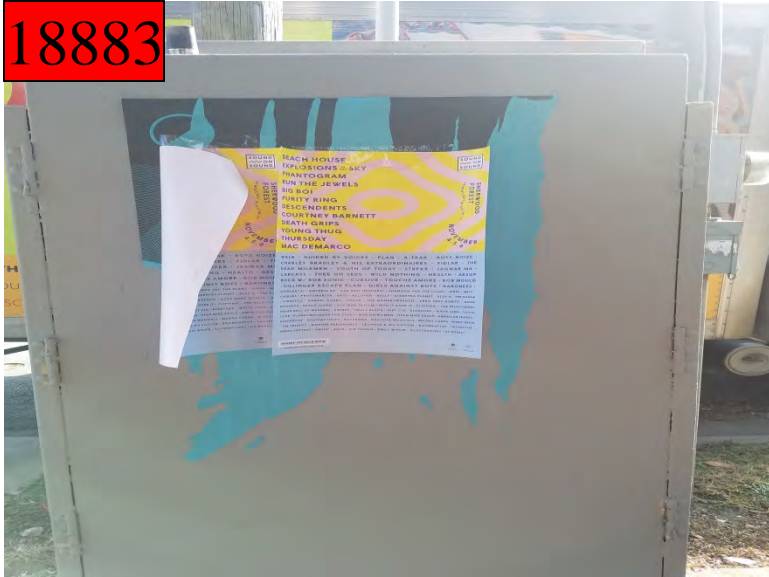
after



5300 Mandell

before

18883



after



5300 Mandell

before

18884



after



1600 Westheimer

before

18885



after



1600 Westheimer

before

18886



after



1600 Westheimer

before

18887



after



1600 Westheimer

before

18888



after



before

18889

2500 Ralph

after



before

18890

2400 Dunlavy

after



1000 Westheimer

before

18891



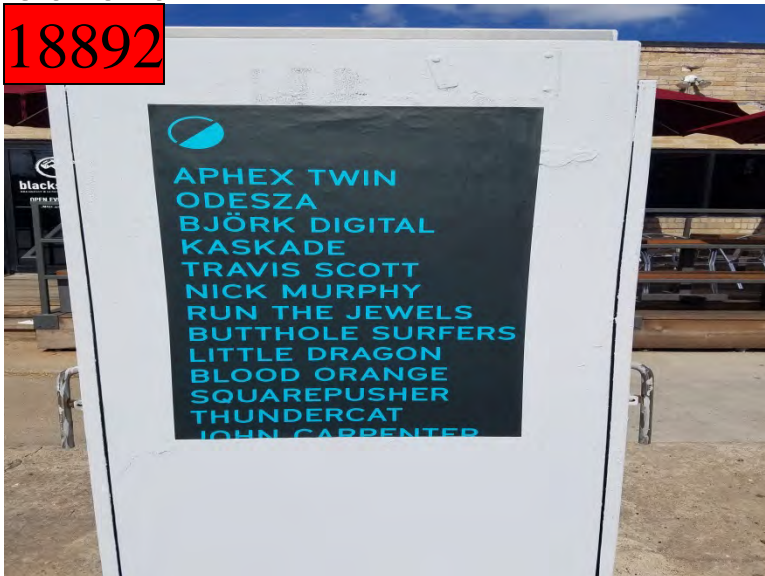
after



1000 Westheimer

before

18892



after



1800 Missouri

before

18893



after



1800 Missouri

before

18894



after



1600 Westheimer

before

18895



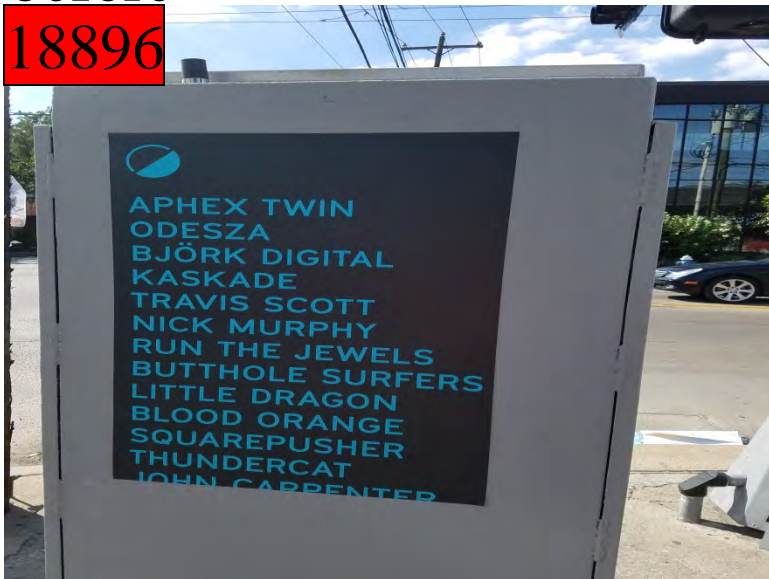
after



1600 Westheimer

before

18896



after



1900 Fairview

before

18897



after



1900 Fairview

before

18898



after



before

18899

2300 Park

after



before

18900

1700 Westheimer

after



2300 Woodhead

before

18901



after



2300 Woodhead

before

18902



after



2400 Woodhead

before

18903



after



2300 Woodhead

before

18904



after



before

18905

1900 Welch

after



before

18906

1900 Elmers

after

