

Montrose District



Graffiti Abatement Reports

November 2016

Montrose District

Monthly Graffiti Abatement Reports 2016

Abated	Jan	Feb	Mar	Apr	May	June	July	Aug	Sept	Oct	Nov	Dec	2016 Total
Business Property	61	83	78	48	72	96	78	50	39	56	29		690
Public Property	231	197	171	157	144	197	137	194	161	129	167		1885
Trash Dumpsters	26	10	17	17	15	7	10	18	12	10	12		154
Total:	318	290	266	222	231	300	225	262	212	195	208		2729

Graffiti Abatement Reports Totals 2008 - 2016										
	2008	2009	2010	2011	2012	2013	2014	2015	2016	Totals
Abated										
Business Property	184	98	144	563	522	467	747	835	690	4,250
Public Property	538	771	935	1,802	1,724	1839	2356	2271	1885	14,121
Trash Dumpsters	28	40	48	59	114	84	82	134	154	743
Total:	750	909	1,127	2,424	2,360	2,390	3,185	3,240	2,729	19,114

Improvement District # 6

Graffiti Abatement

Before and After Pictures

November 4, 2016

Private Property

before

18907

400 Westheimer

after



before

18908

400 Westheimer

after



before

18909



1700 Taft

after



before

18910



1700 Taft

after



before

18911



3900 Greeley

after



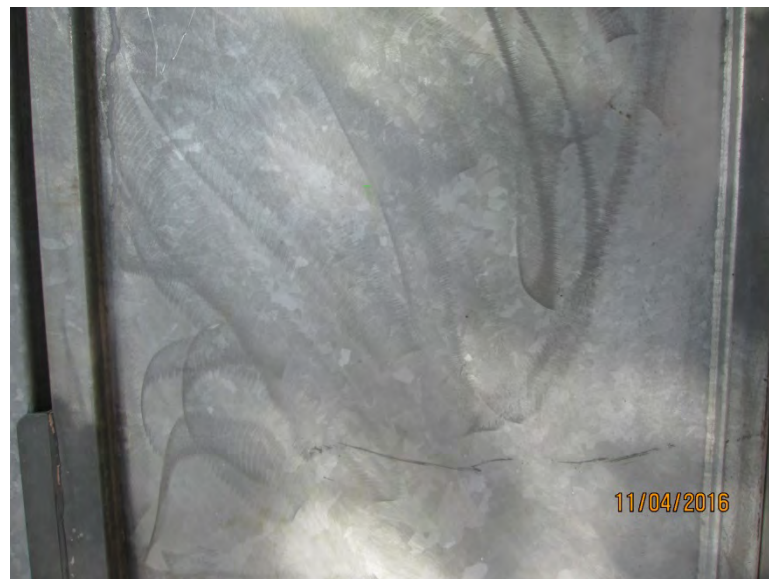
before

18912



3900 Greeley

after



before

18913

3900 Greeley

after



Public Property

before

18914

1500 Taft

after



before

18915

1700 Richmond

after



before
18916

800 Lovett

after



before
18917

800 Lovett

after



500 Westheimer

before
18918



after



400 Westheimer

before
18919



after



before

18920



2100 Yupon

after



before

18921



2300 Grant

after



before

18922



4300 Hazard

after



before

18923



4300 Hazard

after



before

18924



4300 Hazard

after



before

18925



4300 Hazard

after



before

18926

2200 Converse

after



before

18927

2500 Commonwealth

after



before

300 Avondale

after

18928



before

300 Avondale

after

18929



before

300 Avondale

after

18930



Improvement District # 6

Graffiti Abatement

Before and After Pictures

November 7, 2016

Private Property

3300 Mt Vernon

before

18931



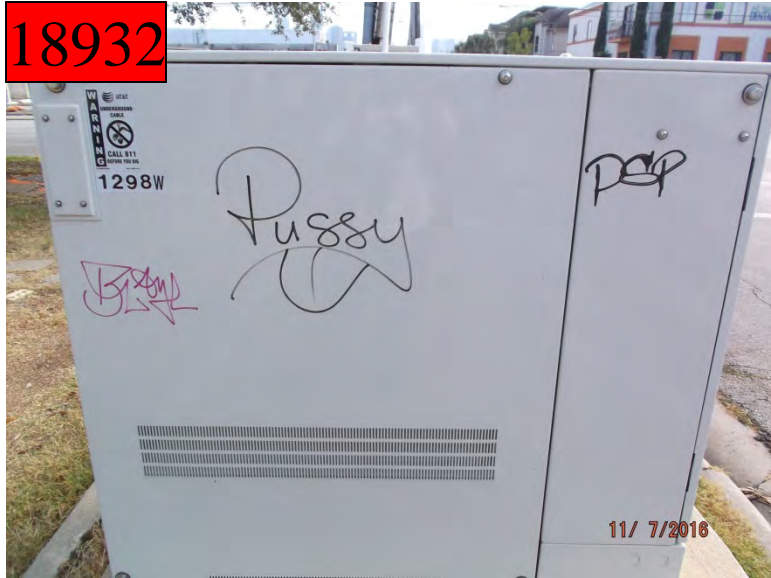
after



Public Property

before

18932



1300 Waugh

after



before

18933



1300 Waugh

after



1000 Fairview

before

18934



after



300 Hyde Park

before

18935



after



before

18936



3000 Taft

after



before

18937



3000 Taft

after



before

18938



3000 Taft

after



before

18939



3000 Taft

after



before

18940

3000 Taft

after



before

18941

3000 Taft

after



3300 Mt Vernon

before

18942



after



3300 Mt Vernon

before

18943



after



1200 Westheimer

before

18944



after



500 Lovett

before

18945



after



before
18946

500 Lovett

after



before
18947

500 Lovett

after



before

18948



1100 Banks

after



before

18949



1100 Banks

after



before

18950

1100 Banks

after



before

18951

1100 Banks

after



before

18952



3900 Driscoll

after



before

18953



3900 Driscoll

after



before

18954

3900 Driscoll

after



before

18955

1600 Park

after



before

18956



900 W Clay

after



Dumpsters

before

18957

1900 Peden

after



before

18958

1900 Peden

after



before

18959

3000 Rosine

after



Improvement District # 6

Graffiti Abatement

Before and After Pictures

November 10, 2016

Private Property

before

18960



200 Pacific

after



before

18961



1400 Hawthorne

after



1400 Hawthorne

before

18962



after



1400 Hawthorne

before

18963



after



1400 Hawthorne

before

18964



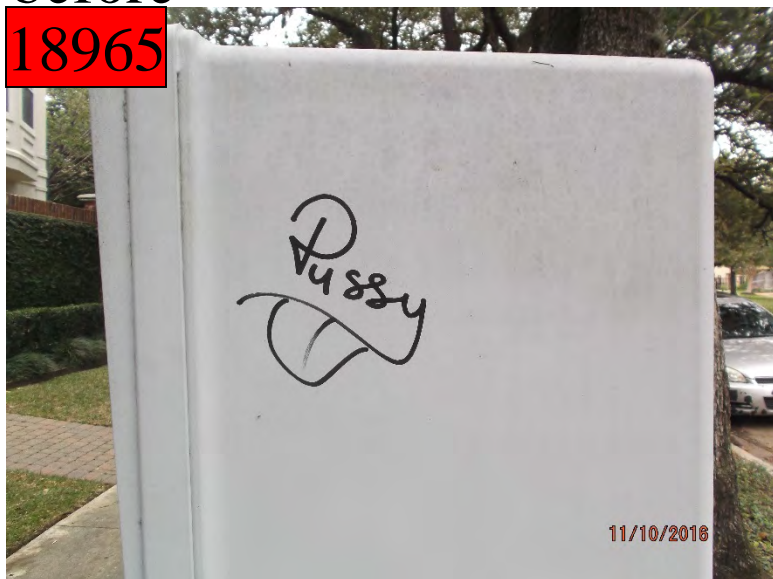
after



2500 Waugh

before

18965



after



Public Property

700 W. Alabama

before

18966



after



800 W. Alabama

before

18967



after



1000 Westheimer

before

18968



after



1000 Westheimer

before

18969



after



before
18970

1000 Westheimer

after



before
18971

1000 Westheimer

after



3300 Graustark

before

18972



after



2000 W. Alabama

before

18973



after



before
18974

2000 W. Alabama

after



before
18975

2500 Waugh

after



4300 Woodhead

before

18976



after



4300 Woodhead

before

18977



after



1800 W. Main

before

18978



after



1800 W. Main

before

18979



after



before
18980



2500 Waugh

after



before
18981



1800 Indiana

after



before

18982



1900 Indiana

after



Dumpsters

1400 Hawthorne

before

18983



after



1400 Hawthorne

before

18984



after



1400 Hawthorne

before

18985



after



1400 Hawthorne

before

18986



after



1400 Hawthorne

before

18987



after



1400 Hawthorne

before

18988



after



before

18989

1400 Hawthorne

after



Improvement District # 6

Graffiti Abatement

Before and After Pictures

November 14, 2016

Public Property

2700 Windsor

before

18990



after



2700 Windsor

before

18991



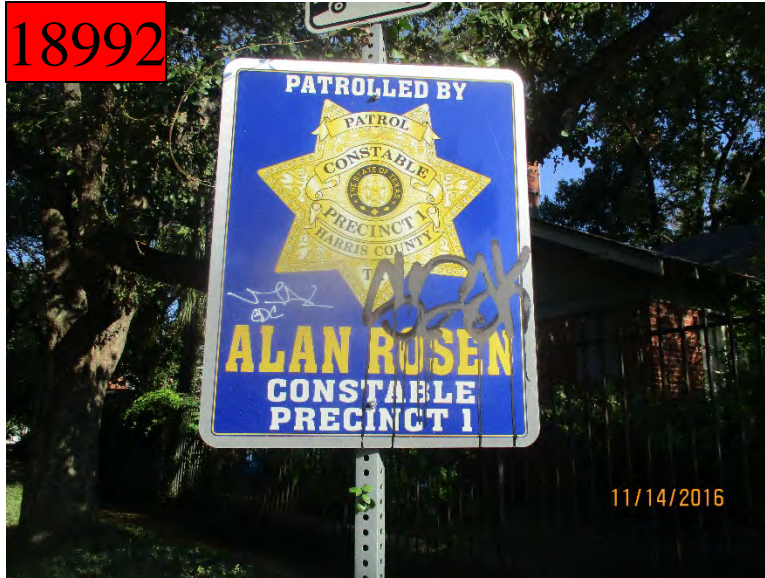
after



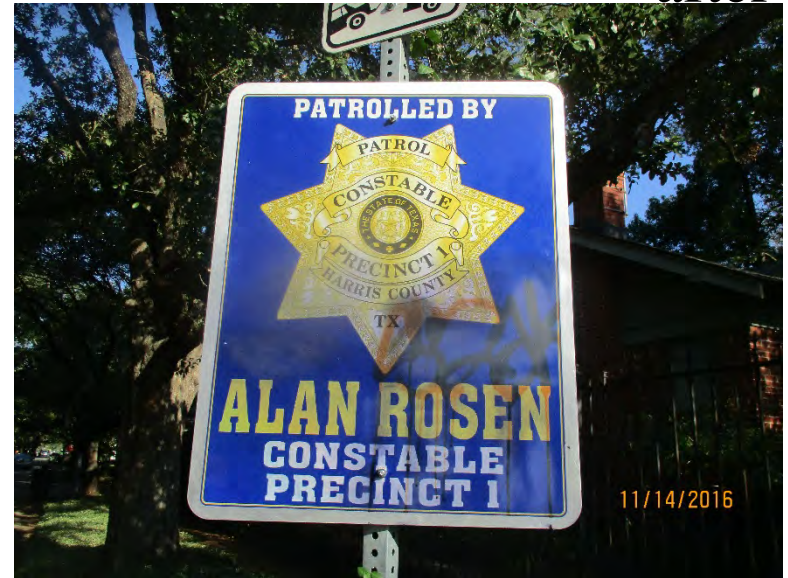
2700 Windsor

before

18992



after



2700 Windsor

before

18993



after



2700 Windsor

before

18994



after



2700 Windsor

before

18995



after



1500 Westheimer

before

18996



after



1600 Westheimer

before

18997



after



1700 Westheimer

before

18998



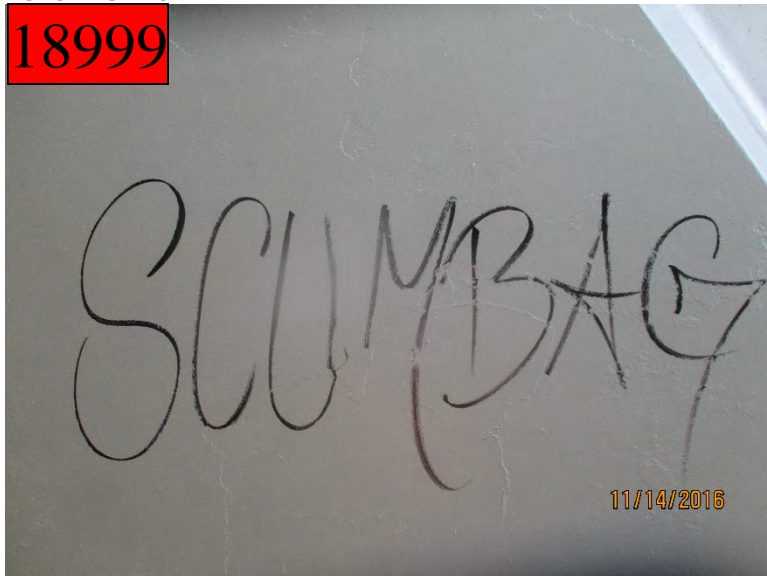
after



4596 Mandella

before

18999



after



4726 Mandella

before

19000



after



4600 Mandella

before

19001



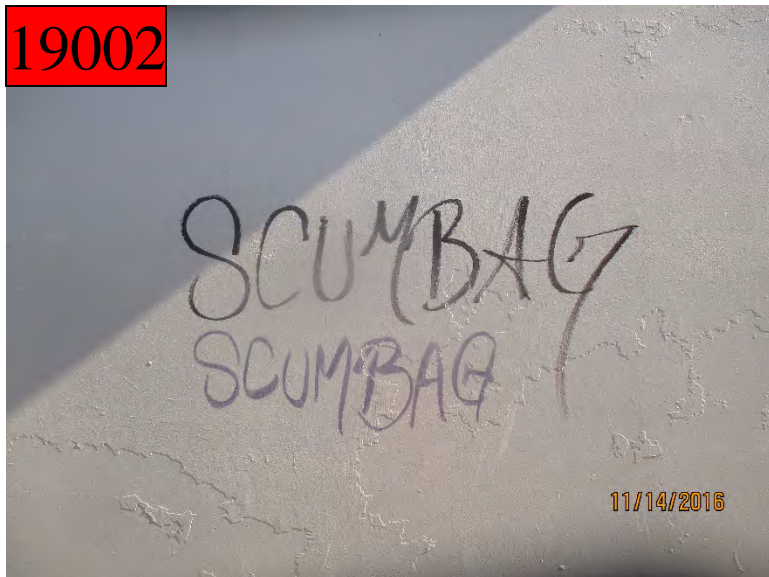
after



4726 Mandella

before

19002



after



1900 Welch

before

19003



after



1900 Fairview

before

19004



after



1900 Fairview

before

19005



after



Private Property

1600 Westheimer

before

19006



after



1556 Westheimer

before

19007



after



before

19008

2510 Park

after



before

19009

2510 Park

after



1718 Westheimer

before

19010



after



1718 Westheimer

before

19011



after



Improvement District # 6

Graffiti Abatement

Before and After Pictures

November 17, 2016

Private Property

1600 Westheimer

before

19012



after



1600 Westheimer

before

19013



after



1600 Westheimer

before

19014



after



1600 Westheimer

before

19015



after



1600 Westheimer

before

19016



after



1600 Westheimer

before

19017



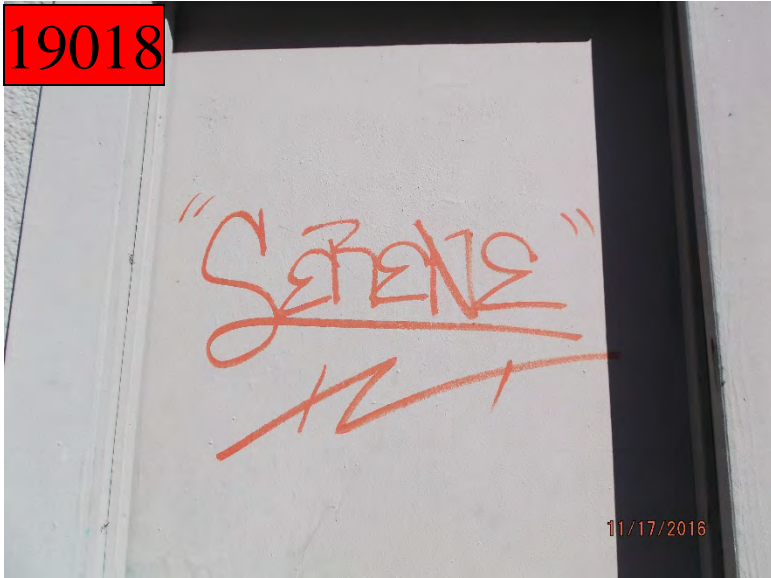
after



1600 Westheimer

before

19018



after



1600 Westheimer

before

19019



after



1600 Westheimer

before

19020



after



Public Property

before
19021



3300 Mt. Vernon

after



before
19022



2600 Hazard

after



before
19023

2600 Hazard

after



before
19024

1900 Westheimer

after



1900 Westheimer

before

19025



after



3900 Garrett

before

19026



after



before

3800 McDuffie

after

19027



before

3800 McDuffie

after

19027



before

19028

3800 McDuffie

after



before

19029

3800 McDuffie

after



before
19030

3800 McDuffie

after



before
19031

3800 McDuffie

after



before

3800 McDuffie

after

19032



before

3800 McDuffie

after

19033



before

3800 McDuffie

after

19034



before

3800 McDuffie

after

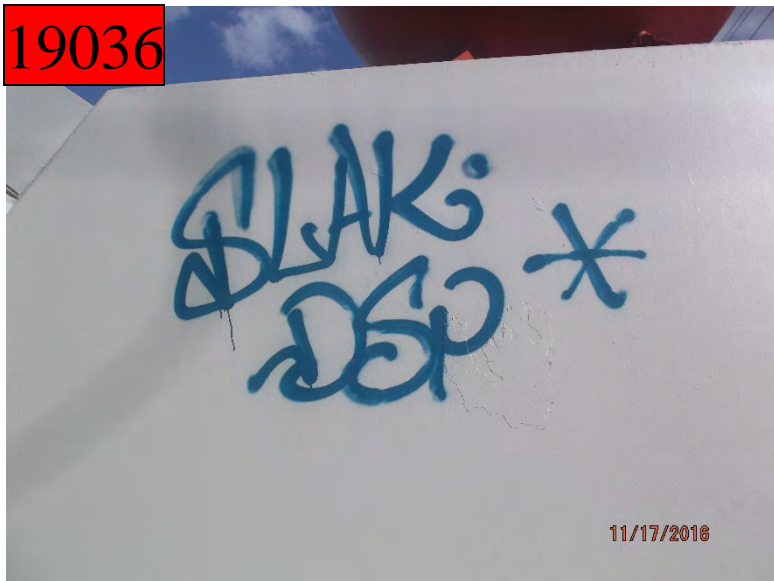
19035



4600 Dunlavy

before

19036



after



4600 Dunlavy

before

19037



after



Dumpsters

1600 Westheimer

before

19039



after



1600 Westheimer

before

19040



after



Improvement District # 6

Graffiti Abatement

Before and After Pictures

November 23, 2016

Public Property

before
19041

100 W. Gray

after



before
19042

1900 W. Dallas

after



1900 W. Dallas

before

19043



after



1000 W. Clay

before

19044



after



before
19045

2300 W. Dallas

after



before
19046

2300 W. Dallas

after



1900 Waughn

before

19047



after



1800 Fairview

before

19048



after



2000 Westheimer

before
19049



after



1400 Westheimer

before
19050



after



before

19051

2600 Waugh Dr.

after



before

19052

2400 Waugh Dr.

after



before
19053

2700 Grant

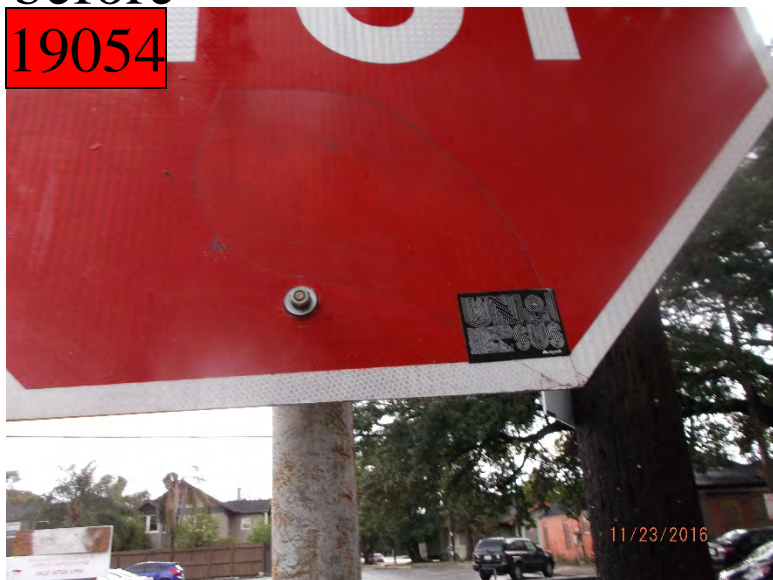
after



before
19054

2700 Grant

after



1300 Westheimer

before

19055



after



3300 Yupon

before

19056



after



before

19057

3300 Yupon

after



before

19058

200 W. Alabama

after



before

200 W. Alabama

after

19059



before

1400 W. Alabama

after

19060



3600 Mandell

before

19061



after



1600 W. Alabama

before

19062



after



1600 W. Alabama

before
19063



after



1600 W. Alabama

before
19064



after



before

19065

1600 W. Alabama

after



before

19066

2600 Huldy

after



before
19067

2000 W. Alabama

after



before
19068

4700 Woodhead

after



before

19069

1600 Richmond Ave.

after



before

19070

3700 Dunlavy St.

after



before

19071



1300 S. Shepard

after



before

19072



1400 Westheimer

after



1400 Westheimer

before

19073



after



1000 Taft

before

19074



after



before

19075



1300 Taft

after



before

19076



900 W. Clay

after



before

1500 Montrose

after

19077



before

1800 W. Dallas St.

after

19078



Improvement District # 6

Graffiti Abatement

Before and After Pictures

November 28, 2016

Public Property

1000 W. Gray

before

19079



after



1500 Columbus

before

19080



after



2800 Commonwealth St.

before

19081



after



1200 Westheimer

before

19082



after



1200 Westheimer

before

19083



after



1300 Westheimer

before

19084



after



1300 Westheimer

before

19085



after



1300 Westheimer

before

19086



after



1300 Westheimer

before

19087



after



4000 Mandell

before

19088



after



1400 Branard

before

19089



after



1400 Branard

before

19090



after



1500 Richmond

before

19091



after



1500 Richmond

before

19092



after



1000 Richmond

before

19093



after



1000 Richmond

before

19094



after



before

19095

3400 Montrose

after



before

19096

2300 Montrose

after



2300 Montrose

before

19097



after



2600 Montrose

before

19098



after



before
19099

2000 Waugh

after



before
19100

2000 Waugh

after



before

19101



2000 Waugh

after



before

19102



2000 Waugh

after



before

19103

2500 Commonwealth

after



before

19104

1500 Montrose

after



before

1500 Montrose

after

19105



before

3000 W. Dallas

after

19106



2900 W. Dallas

before

19107



after



1400 Hazel

before

19108



after



1400 W. Gray

before

19109



after



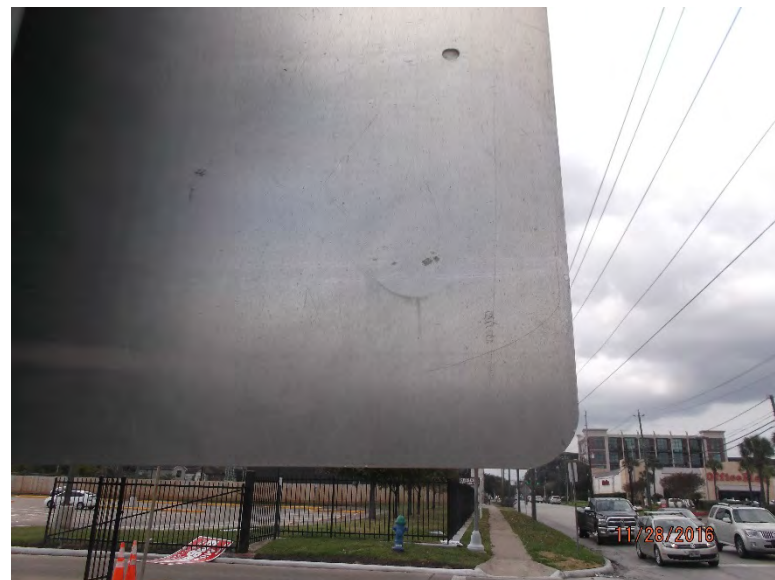
1400 W. Gray

before

19110



after

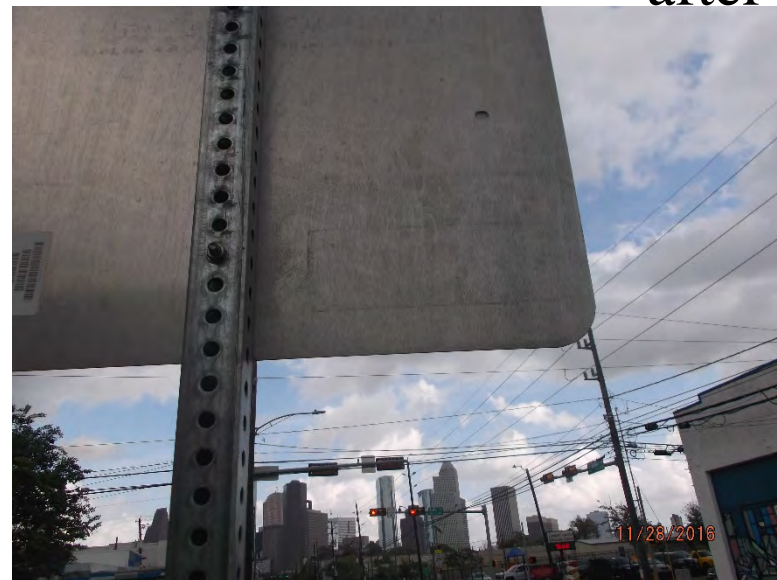


before

1900 W. Dallas

after

19111



before

1300 Heiner

after

19112



before
19113

800 Andrews

after



before
19114

800 Andrews

after

