

Montrose District



Graffiti Abatement Reports

April 2017

Montrose District

Monthly Graffiti Abatement Reports 2017

Abated	Jan	Feb	Mar	Apr	May	June	July	Aug	Sept	Oct	Nov	Dec	2017 Total
Business Property	79	30	38	47									194
Public Property	121	153	162	117									553
Trash Dumpsters	1	8	6	16									31
Total:	201	191	206	180									778

Graffiti Abatement Reports Totals 2008 - 2016											
	2008	2009	2010	2011	2012	2013	2014	2015	2016	2017	Totals
Abated											
Business Property	184	98	144	563	522	467	747	835	717	194	4,471
Public Property	538	771	935	1,802	1,724	1839	2356	2271	2081	553	14,870
Trash Dumpsters	28	40	48	59	114	84	82	134	163	31	783
Total:	750	909	1,127	2,424	2,360	2,390	3,185	3,240	2,961	778	20,124

Improvement District # 6

Graffiti Abatement

Before and After Pictures

April 3, 2017

Private Property

1627 Westheimer

before

19945



after



1627 Westheimer

before

19946



after



1627 Westheimer

before

19947



after



1627 Westheimer

before

19948



after



1627 Westheimer

before

19949



after



1627 Westheimer

before

19950



after



before

3300 Graustark

after

19951



Public Property

before

19952



200 Fairview

after



before

19953



200 Fairview

after



before
19954

300 Fairview

after



before
19955

2400 Taft

after



before
19956

2400 Grant

after



before
19957

2900 Baldwin

after



100 Stratford

before

19958



after



100 Stratford

before

19959



after



1400 Hawthorne

before

19960



after



2400 Ralph

before

19961



after



2400 Windsor

before

19962



after



1500 California

before

19963



after



1200 Missouri

before

19964



after



4300 Dunlavy

before

19965



after



4300 Dunlavy

before

19966



after



4300 Dunlavy

before

19967



after



before

19968

1300 Banks

after



Improvement District # 6

Graffiti Abatement

Before and After Pictures

April 6, 2017

Private Property

1400 Hawthorne

before

19969



after



2117 Dunlavy

before

19970



after



before

1400 W. Alabama

after

19971



before

1400 W. Alabama

after

19972



2117 Dunlavy

before

19973



after



2117 Dunlavy

before

19974



after



2117 Dunlavy

before

19975



after



2117 Dunlavy

before

19976



after



2117 Dunlavy

before

19977



after



2117 Dunlavy

before

19978



after



Public Property

before
19979

2700 Taft

after



before
19980

2800 Taft

after



before
19981

2800 Taft

after



before
19982

2800 Taft

after



3400 Burlington

before

19983



after



3400 Burlington

before

19984



after



3400 Burlington

before

19985



after



1300 Westheimer

before

19986



after



1300 Westheimer

before

19987



after



3600 Dunlavy

before

19988



after



before

19989



4200 Loretto

after



before

19990



4100 Mandell

after



2100 Dunlavy

before

19991



after



2100 Dunlavy

before

19992



after



Dumpsters

before
19993

1400 Hawthorne

after



before
19994

1400 Hawthorne

after



1400 Hawthorne

before

19995



after



1400 Hawthorne

before

19996



after



before

19997

1400 Hawthorne

after



before

19998

1400 Hawthorne

after



1400 Hawthorne

before

19999



after



1500 Colquitt

before

20000



after



Improvement District # 6

Graffiti Abatement

Before and After Pictures

April 10, 2017

Private Property

2800 Shepherd

before

20001



after



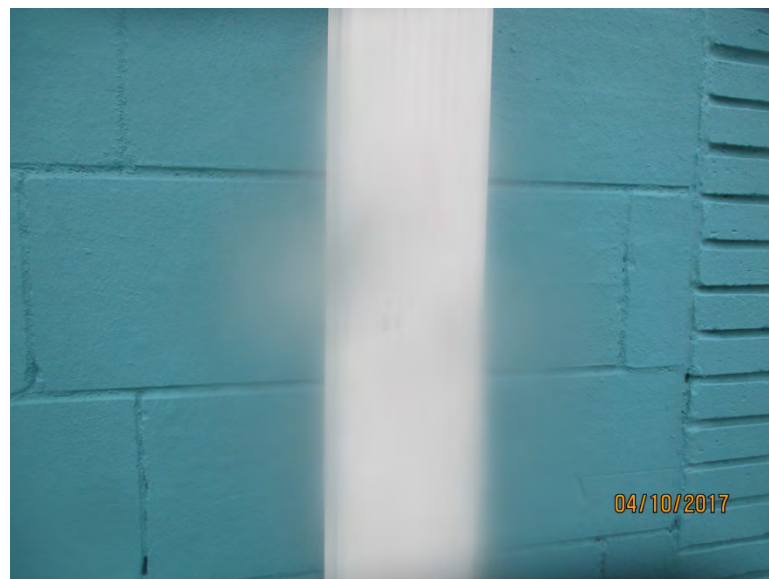
2800 Shepherd

before

20002



after



Public Property

1800 Missouri

before

20003



after



1800 Missouri

before

20004



after



1800 Missouri

before

20005



after



1800 Missouri

before

20006



after



1800 Missouri

before

20007



after



1800 Missouri

before

20008



after



1800 Missouri

before

20009



after



1800 Missouri

before

20010



after



2300 Dunlavy

before

20011



after



2300 Dunlavy

before

20012



after



2300 Dunlavy

before

20013



after



2300 Dunlavy

before

20014



after



2300 Dunlavy

before

20015



after



2300 Dunlavy

before

20016



after



2300 Dunlavy

before

20017



after



2300 Dunlavy

before

20018



after



before

20019

2000 Harold

after



before

20020

2000 Harold

after



2100 Fairview

before

20021



after



2100 Fairview

before

20022



after



before

20023

1000 Cali

after



before

20024

1000 Cali

after



before

20025

1000 Cali

after



before

20026

2600 Grant

after



Dumpsters

2300 Dunlavy

before

20027



after



2000 Kipling

before

20028



after



before

20029

1800 Bell

after



Improvement District # 6

Graffiti Abatement

Before and After Pictures

April 18, 2017

Private Property

502 W Alabama

before

20030



after



502 W Alabama

before

20031



after



502 W Alabama

before

20032



after



502 W Alabama

before

20033



after



502 W Alabama

before

20034



after



502 W Alabama

before

20035



after



502 W Alabama

before

20036



after



502 W Alabama

before

20037



after



4600 Graustark

before

20038



after



4600 Graustark

before

20039



after



Public Property

before
20040

2000 Montrose

after



before
20041

2000 Montrose

after



2000 Montrose

before
20042



after



1300 Westheimer

before
20043



after



before

3800 McDuffie

after

20044



before

3800 McDuffie

after

20045



before
20046

4700 Hazard

after



before
20047

4700 Hazard

after



1000 Westheimer

before

20048



after



4800 Hazard

before

20049



after



before

20050

4800 Hazard

after



before

20051

4800 Hazard

after



before

20052



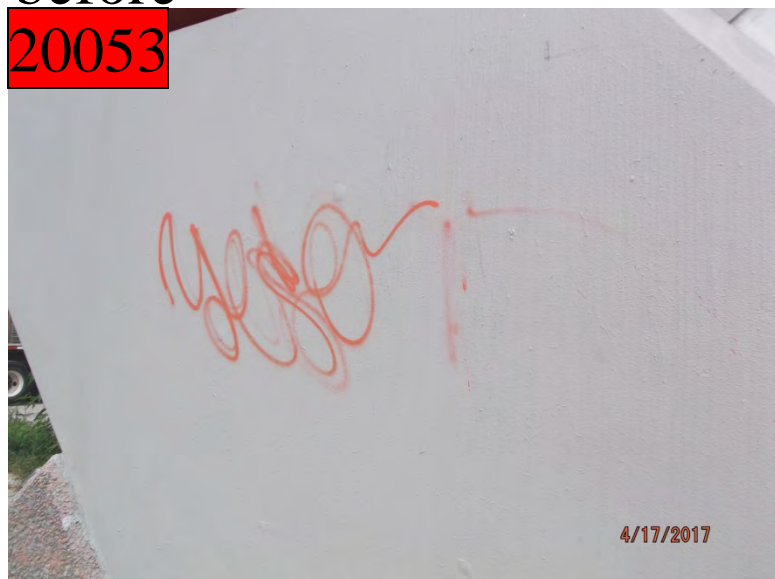
2000 Banks

after



before

20053



4600 Graustark

after



4600 Graustark

before

20054



after



4600 Graustark

before

20055



after



4600 Graustark

before

20056



after



Improvement District # 6

Graffiti Abatement

Before and After Pictures

April 20, 2017

Private Property

before
20057

1400 Hawthorne

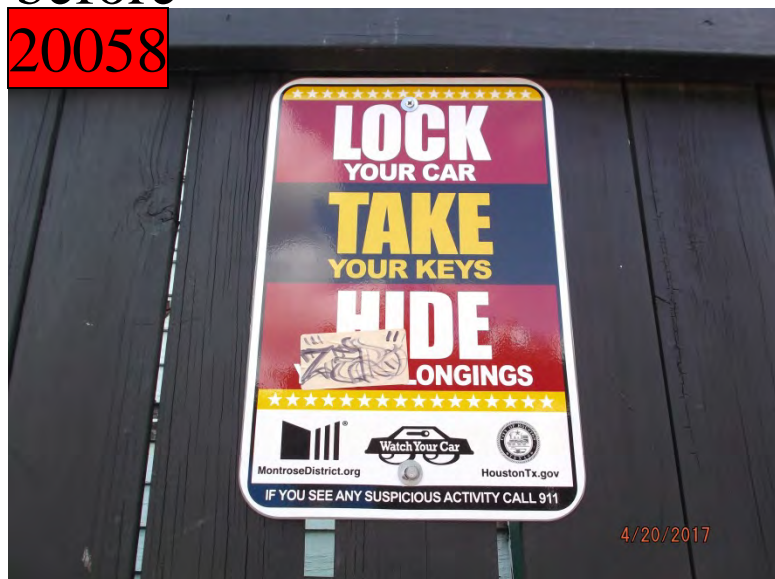
after



before
20058

1400 Hawthorne

after



1400 Hawthorne

before

20059



after



1400 Hawthorne

before

20060



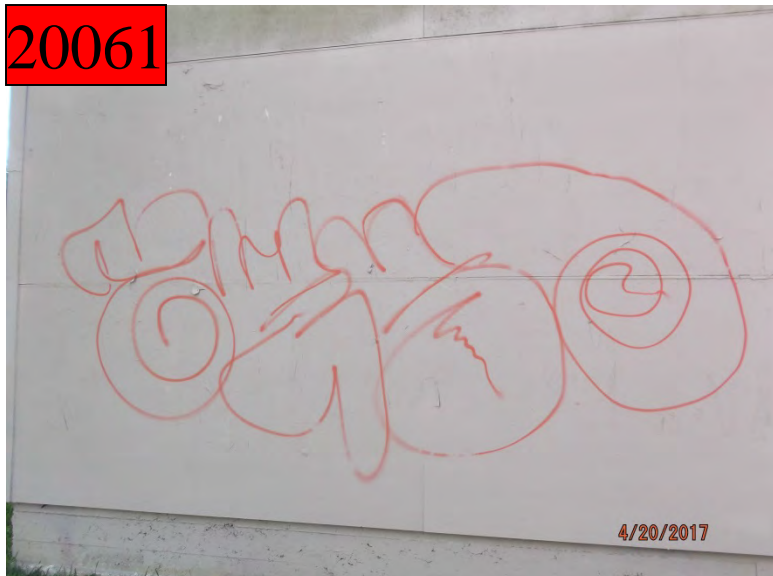
after



2200 Montrose

before

20061



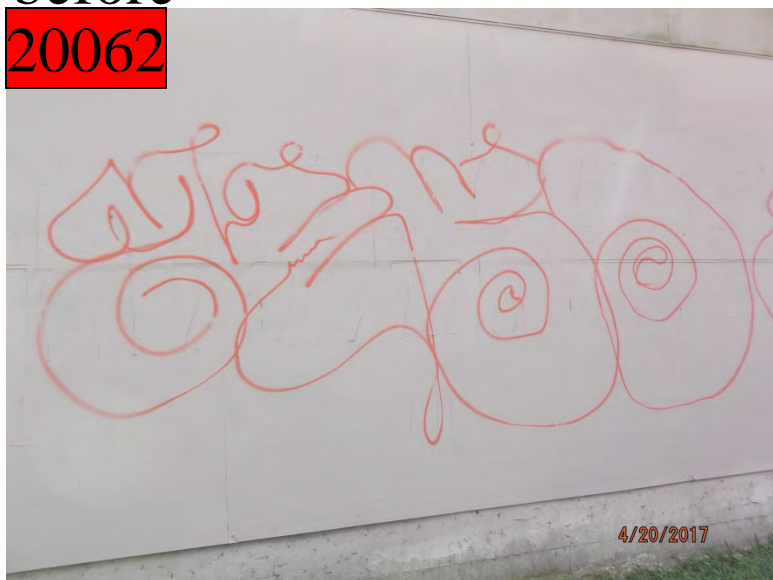
after



2200 Montrose

before

20062



after



2200 Montrose

before

20063



after



Public Property

before
20064

1700 Montrose

after



before
20065

1700 Montrose

after



before

1700 Montrose

after

20066

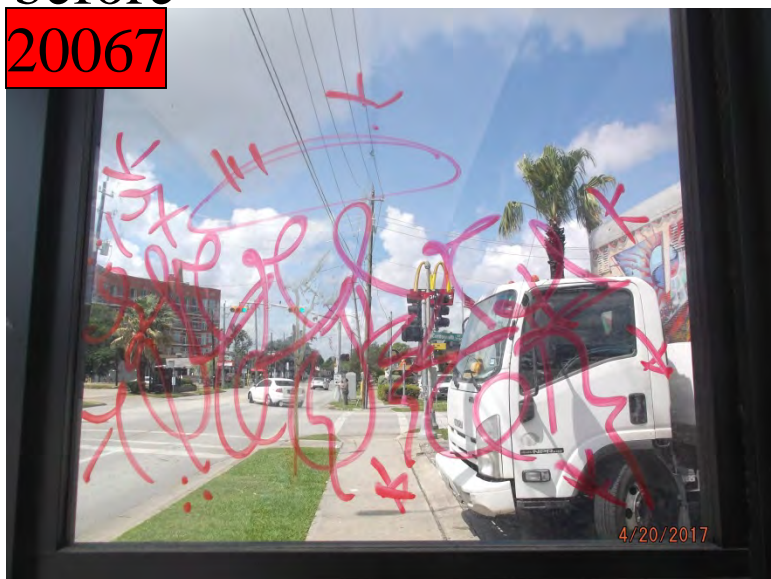


before

1200 Westheimer

after

20067



before

20068



3700 Hazard

after



before

20069



3700 Hazard

after



before

20070

2400 Montrose

after



before

20071

2400 Montrose

after

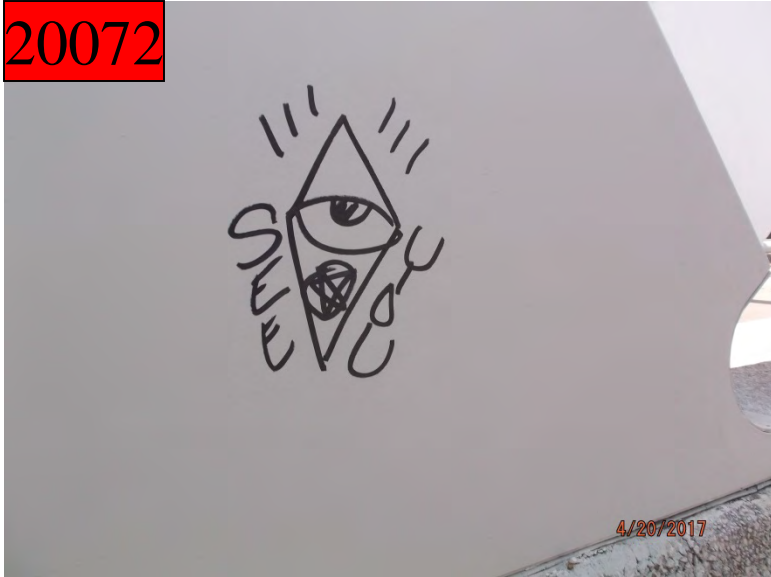


before

20072

4700 Hazard

after



before

20073

4700 Hazard

after



before

20074

4700 Woodhead

after



before

20075

4700 Woodhead

after



4700 Woodhead

before

20076



after



4600 Mandell

before

20077



after



4600 Graustark

before

20078



after



4600 Graustark

before

20079



after



Dumpsters

1400 Hawthorne

before

20080



after



1400 Hawthorne

before

20081



after



1400 Hawthorne

before

20082



after



1400 Hawthorne

before

20083



after



before
20084

1400 Hawthorne

after



Improvement District # 6

Graffiti Abatement

Before and After Pictures

April 24, 2017

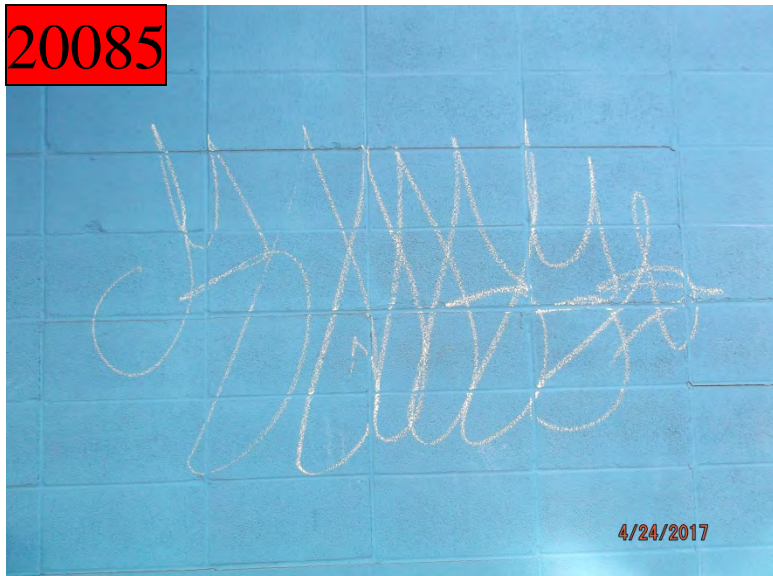
Private Property

before

20085

2200 Converse

after



before

20086

2200 Converse

after



Public Property

3600 Burlington

before

20087



after



4100 Bagby

before

20088



after



before
20089

4100 Bagby

after



before
20090

4100 Bagby

after



3400 Burlington

before

20091



after



3400 Burlington

before

20092



after



3400 Burlington

before

20093



after



3400 Burlington

before

20094



after



2400 Woodhead

before

20095



after



2400 Woodhead

before

20096



after



4800 Montrose

before

20097



after



4800 Montrose

before

20098



after



3400 Burlington

before

20099



after



700 W Gray

before

20100



after



2100 Dunlavy

before

20101



after



2100 Dunlavy

before

20102



after



before

20103

1700 Montrose

after



before

20104

1700 Montrose

after



Improvement District # 6

Graffiti Abatement

Before and After Pictures

April 27, 2017

Private Property

1618 Westheimer

before

20105



after



1618 Westheimer

before

20106



after



1618 Westheimer

before

20107



after



1618 Westheimer

before

20108



after



1618 Westheimer

before

20109



after



1618 Westheimer

before

20110



after



1618 Westheimer

before

20111



after



1618 Westheimer

before

20112



after



200 Westheimer

before

20113



after



Public Property

1400 Westheimer

before
20114



after



1400 Westheimer

before
20115



after



1000 Westheimer

before

20116



after



500 Westheimer

before

20117



after



400 Westheimer

before
20118



after



400 Westheimer

before
20119



after



900 Richmond

before

20120



after



900 Richmond

before

20121



after



1000 Richmond

before

20122



after



1500 Welch

before

20123



after



1000 W Drew

before

20124



after

