

Montrose District



Graffiti Abatement Reports

February 2017

Montrose District

Monthly Graffiti Abatement Reports 2017

Abated	Jan	Feb	Mar	Apr	May	June	July	Aug	Sept	Oct	Nov	Dec	2017 Total
Business Property	79	30											109
Public Property	121	153											274
Trash Dumpsters	1	8											9
Total:	201	191											392

Graffiti Abatement Reports Totals 2008 - 2016											
	2008	2009	2010	2011	2012	2013	2014	2015	2016	2017	Totals
Abated											
Business Property	184	98	144	563	522	467	747	835	717	109	4,386
Public Property	538	771	935	1,802	1,724	1839	2356	2271	2081	274	14,591
Trash Dumpsters	28	40	48	59	114	84	82	134	163	9	761
Total:	750	909	1,127	2,424	2,360	2,390	3,185	3,240	2,961	392	19,738

Improvement District # 6

Graffiti Abatement

Before and After Pictures

February 2, 2017

Private Property

1600 Westheimer

before

19548



after



1600 Westheimer

before

19549



after



1600 Westheimer

before

19550



after



1600 Westheimer

before

19551



after



1600 Westheimer

before

19552



after



1600 Westheimer

before

19553



after



1900 Branard

before

19554



after



3900 Stanford

before

19555



after



1400 Columbus

before

19556



after



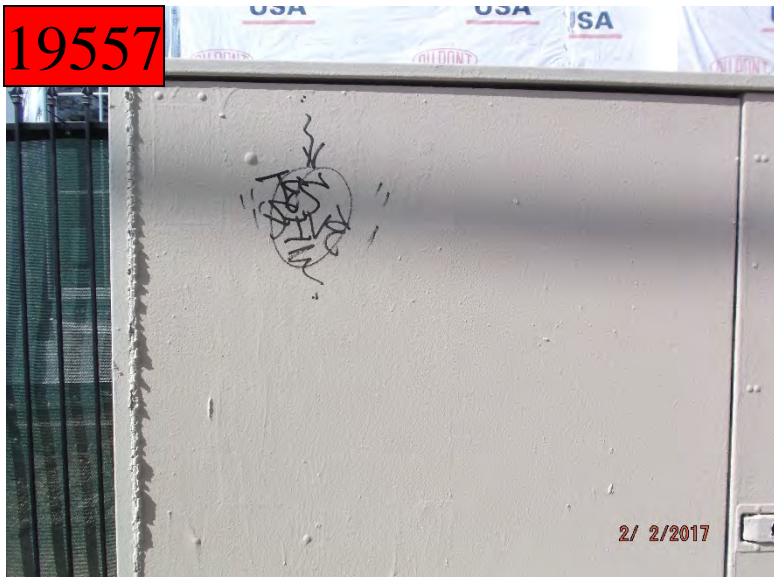
Public Property

before

19557

3300 Taft

after



before

19558

3300 Taft

after



before
19559

3800 McDuffie

after



before
19560

3800 McDuffie

after



1900 Branard

before

19561



after



3700 Dunlavy

before

19562



after



3700 Dunlavy

before

19563



after



2200 Dunlavy

before

19564



after



2100 Dunlavy

before

19565



after



2100 Dunlavy

before

19566



after



Dumpsters

1600 Westheimer

before

19567



after



Improvement District # 6

Graffiti Abatement

Before and After Pictures

February 6, 2017

Private Property

before
19568



1900 Peden

after



before
19569



1900 Peden

after



before
19570

1900 Peden

after



before
19571

1900 Peden

after



1400 Richmond

before

19572



after



Public Property

before
19573

3500 Garrett

after



before
19574

3500 Garrett

after



400 Hawthorne

before

19575



after



2700 Dunlavy

before

19576



after



1900 Fairview

before

19577



after



1800 Fairview

before

19578



after



1800 Fairview

before

19579



after



1800 Fairview

before

19580



after



1600 Fairview

before

19581



after



1600 Fairview

before

19582



after



4400 Mandell

before

19583



after



1400 Richmond

before

19584



after



1400 Richmond

before

19585



after



1400 Richmond

before

19586



after



1400 Richmond

before

19587



after



1400 Richmond

before

19588



after



before

19589

1300 Peden

after



before

19590

1300 Peden

after



before

19591

1800 W Clay

after



Dumpsters

before

19592

1400 Hawthorne

after



before

19593

1400 Hawthorne

after



1400 Hawthorne

before

19594



after



1400 Hawthorne

before

19595



after



1400 Hawthorne

before

19596



after



1400 Hawthorne

before

19597



after



Improvement District # 6

Graffiti Abatement

Before and After Pictures

February 9, 2017

Public Property

before
19598

2300 Montrose

after



before
19599

2300 Van Buren

after



before
19600

2300 Montrose

after



before
19601

1100 Hyde Park

after



800 Hawthorne

before

19602



after



600 W. Alabama

before

19603



after



600 W. Alabama

before

19604



after



3600 Garrot

before

19605



after



before

19606

3600 Garrot

after



before

19607

500 W. Alabama

after



500 W. Alabama

before

19608



after



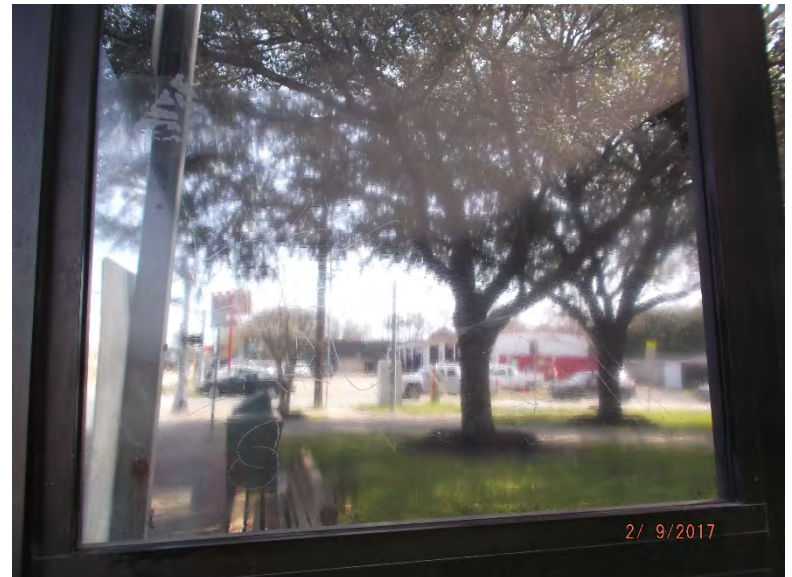
1800 Westheimer

before

19609



after



1800 Westheimer

before

19610



after



2600 Woodhead

before

19611



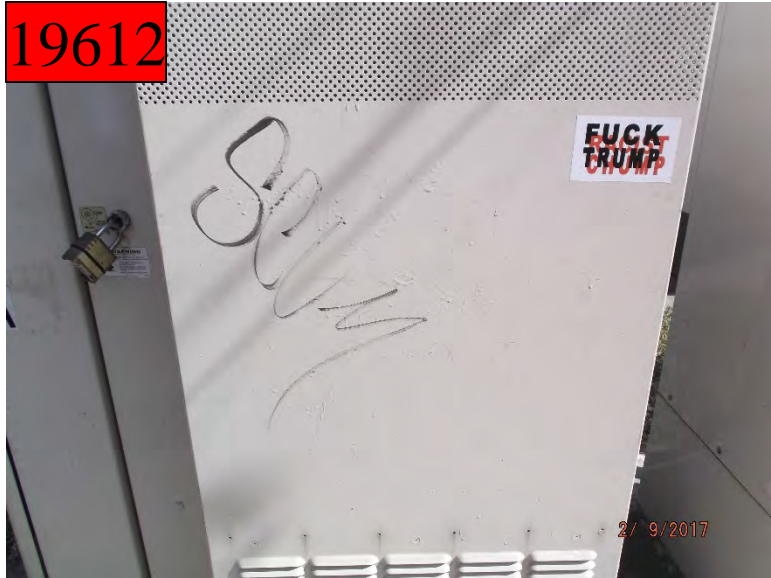
after



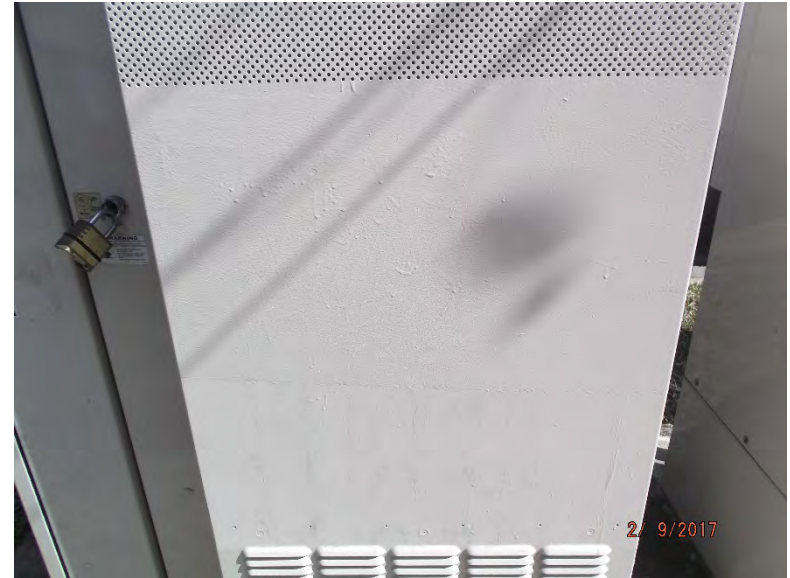
4200 Woodhead

before

19612



after



4200 Woodhead

before

19613



after



1800 Richmond

before

19614



after



1800 Richmond

before

19615



after



19616

1800 Richmond

after



19617

1800 Richmond

after



1800 Richmond

before

19618



after



1800 Richmond

before

19619



after



before

19620



1200 Banks

after



before

19621



1200 Banks

after



4700 Grautark

before
19622



after



2400 Windsor

before
19623



after



before

19624

1600 Haver

after



before

19625

1200 W. Clay

after



Improvement District # 6

Graffiti Abatement

Before and After Pictures

February 13, 2017

Private Property

1400 Hawthorne

before

19626



after



1400 Hawthorne

before

19627



after



before

19628

900 W Clay

after



Public Property

2400 Crocker

before

19629



after



2400 Crocker

before

19630



after



2600 Dunlavy

before

19631



after



2600 Dunlavy

before

19632



after



2600 Dunlavy

before

19633



after



3700 Mt Vernon

before

19634



after



1600 Hawthorne

before

19635



after



1600 Hawthorne

before

19636



after



2700 Dunlavy

before

19637



after



2700 Dunlavy

before

19638



after



3300 Mandell

before

19639



after



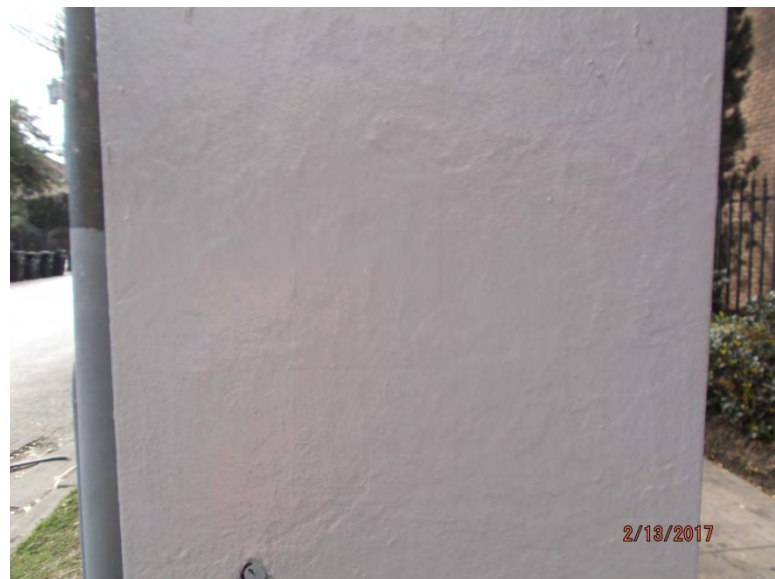
3300 Mandell

before

19640



after



3300 Mandell

before

19641



after



3300 Mandell

before

19642



after



before
19643

2100 Grant

after



before
19644

2100 Grant

after



before
19645

2100 Grant

after



before
19646

2100 Grant

after



before
19647

1000 W Drew

after



before
19648

1000 W Drew

after



1600 Westheimer

before

19649



after



1400 Richmond

before

19650



after



1400 Richmond

before

19651



after



1400 Richmond

before

19652



after



1000 Richmond

before

19653



after



800 Branard

before

19654



after



2000 Fairview

before

19655



after



Improvement District # 6

Graffiti Abatement

Before and After Pictures

February 20, 2017

Private Property

600 Avondale

before

19656



after



600 Avondale

before

19657



after



before

19658

600 Avondale

after



before

19659

3400 Mulberry

after



Public Property

2500 Whitney

before

19660



after



1000 Westheimer

before

19661



after



1000 Westheimer

before

19662



after



1000 Westheimer

before

19663



after



before

19664

3600 Hazard

after



before

19665

4700 Woodhead

after



4700 Woodhead

before

19666



after



4700 Woodhead

before

19667



after



4700 Graustark

before

19668



after



4700 Graustark

before

19669



after



4700 Graustark

before

19670



after



4700 Graustark

before

19671



after



4700 Graustark

before

19672



after



4700 Graustark

before

19673



after



4700 Graustark

before

19674



after



4700 Graustark

before

19675



after



before
19676

3200 Montrose

after



before
19677

2900 W Dallas

after



before
19678

1000 Peveto

after



before
19679

1000 Peveto

after



Improvement District # 6

Graffiti Abatement

Before and After Pictures

February 23, 2017

Private Property

1637 Westheimer

before

19680



after



1637 Westheimer

before

19681



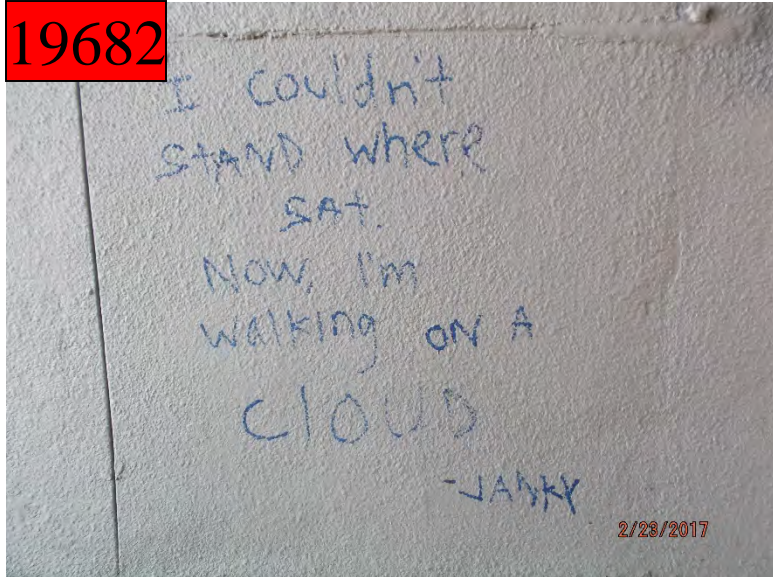
after



1637 Westheimer

before

19682



after



1637 Westheimer

before

19683



after



2500 Dunlavy

before

19684



after



2500 Dunlavy

before

19685



after



before

19686

2200 Montrose

after



before

19687

2200 Montrose

after



2200 Montrose

before

19688



after



Public Property

2500 Dunlavy

before

19689



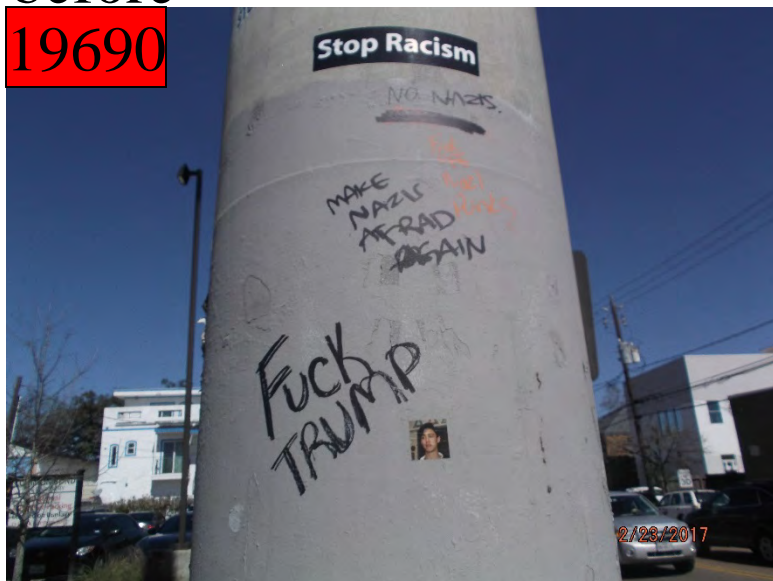
after



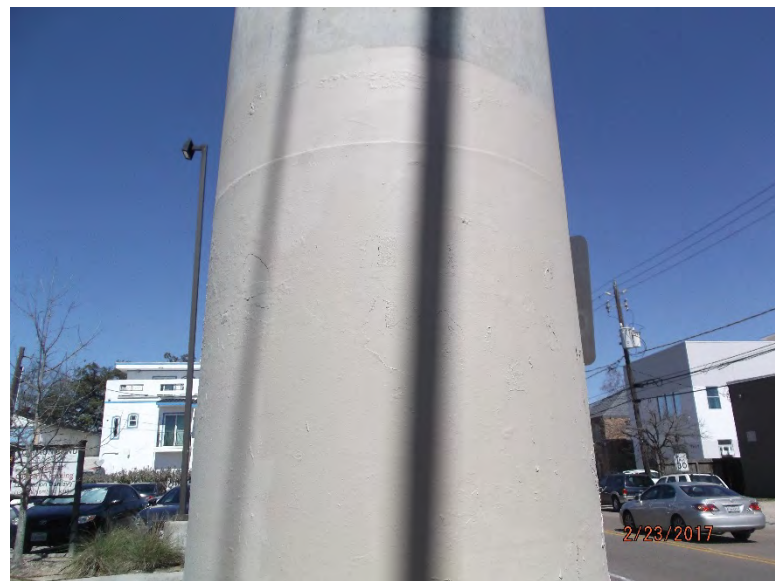
2500 Dunlavy

before

19690



after



before
19691

3800 McDuffie

after



before
19692

4700 Hazard

after

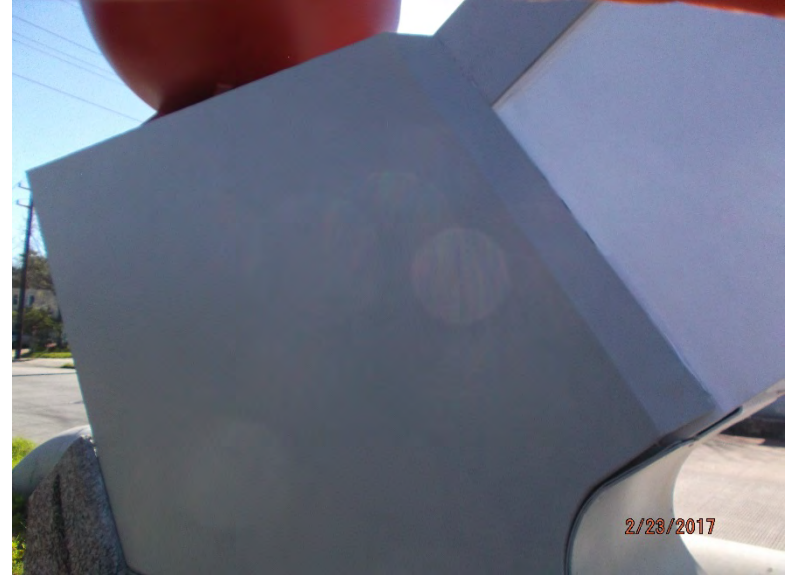


before

19693

4700 Hazard

after



Dumpsters

1637 Westheimer

before

19694



after



Improvement District # 6

Graffiti Abatement

Before and After Pictures

February 24, 2017

Graustark Bridge

before

19695



after



Graustark Bridge

before

19696



after



Montrose Bridge

before

19697



after



Montrose Bridge

before

19698



after



Montrose Bridge

before

19699



after



Montrose Bridge

before

19700



after



Montrose Bridge

before

19701



after



Montrose Bridge

before

19702



after



before

19703



Montrose Bridge

after



before

19704



Montrose Bridge

after



before

19705



Montrose Bridge

after



before

19706



Montrose Bridge

after



Montrose Bridge

before

19707



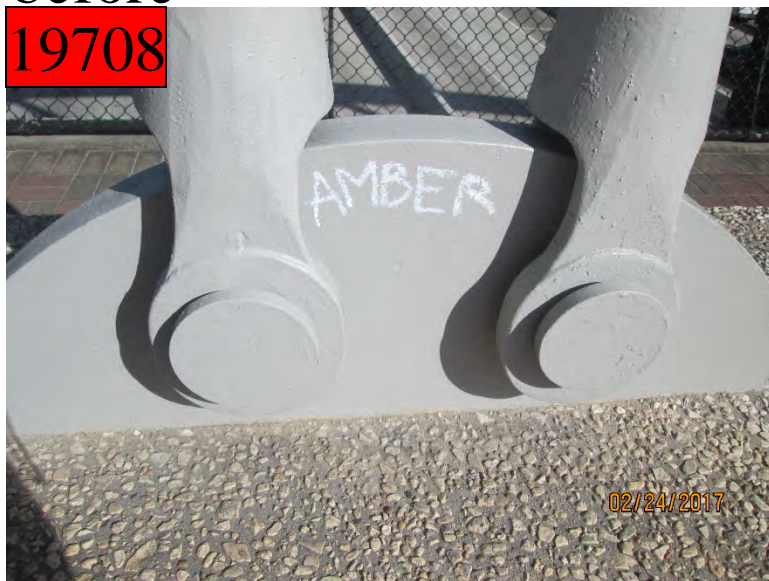
after



Montrose Bridge

before

19708



after



Montrose Bridge

before

19709



after



Montrose Bridge

before

19710



after



Montrose Bridge

before

19711



after



Montrose Bridge

before

19712



after



Hazard Bridge

before

19713



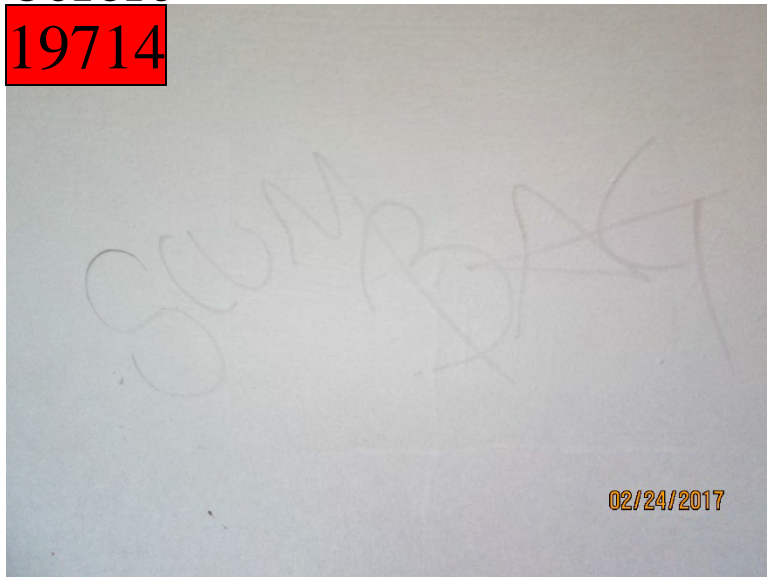
after



Hazard Bridge

before

19714



after



Hazard Bridge

before

19715



after



Hazard Bridge

before

19716



after



Improvement District # 6

Graffiti Abatement

Before and After Pictures

February 27, 2017

Public Property

2000 Montrose

before

19717



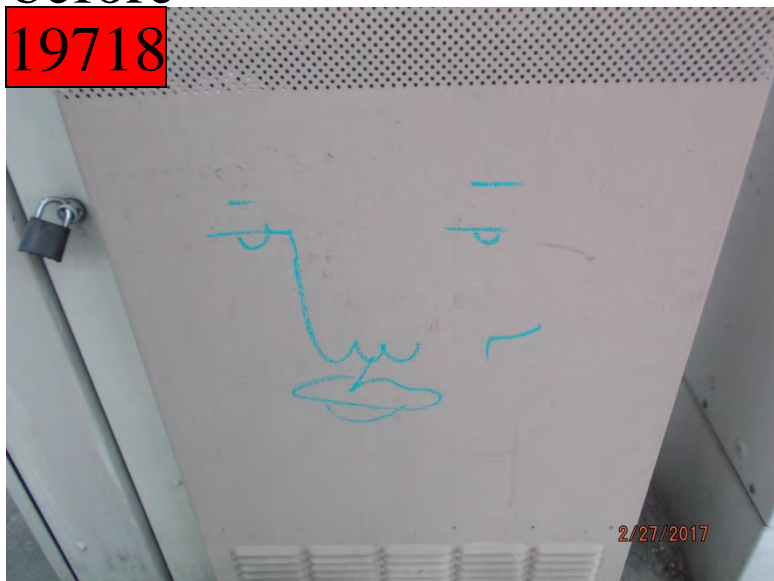
after



2000 Montrose

before

19718



after



2000 Montrose

before
19719



after



1000 Welch

before
19720



after



before

19721



3000 Taft

after



before

19722



3000 Taft

after



4500 Montrose

before

19723



after



3200 Montrose

before

19724



after



before

19725

4500 Kyle

after



before

19726

4500 Kyle

after



before

19727

4600 Hazard

after



before

19728

4700 Woodhead

after



4700 Woodhead

before

19729



after



4700 Woodhead

before

19730



after



4700 Woodhead

before

19731



after



4700 Woodhead

before

19732



after



before

19733

4700 Woodhead

after



before

19734

4700 Woodhead

after



4700 Graustark

before

19735



after



1900 Fairview

before

19736



after



2100 Dunlavy

before

19737



after



1706 Westheimer

before

19738



after

