

Montrose District



Graffiti Abatement Reports

August 2016

Montrose District

Monthly Graffiti Abatement Reports 2016

Abated	Jan	Feb	Mar	Apr	May	June	July	Aug	Sept	Oct	Nov	Dec	2016 Total
Business Property	61	83	78	48	72	96	78	50					566
Public Property	231	197	171	157	144	197	137	194					1428
Trash Dumpsters	26	10	17	17	15	7	10	18					120
Total:	318	290	266	222	231	300	225	262					2114

Graffiti Abatement Reports Totals 2008 - 2016										
	2008	2009	2010	2011	2012	2013	2014	2015	2016	Totals
Abated										
Business Property	184	98	144	563	522	467	747	835	566	4,126
Public Property	538	771	935	1,802	1,724	1839	2356	2271	1428	13,664
Trash Dumpsters	28	40	48	59	114	84	82	134	120	709
Total:	750	909	1,127	2,424	2,360	2,390	3,185	3,240	2,114	18,499

Improvement District # 6

Graffiti Abatement

Before and After Pictures

August 1, 2016

Private Property

1639 Westheimer

before

18238



after



1641 Westheimer

before

18239



after



1643 Westheimer

before

18240



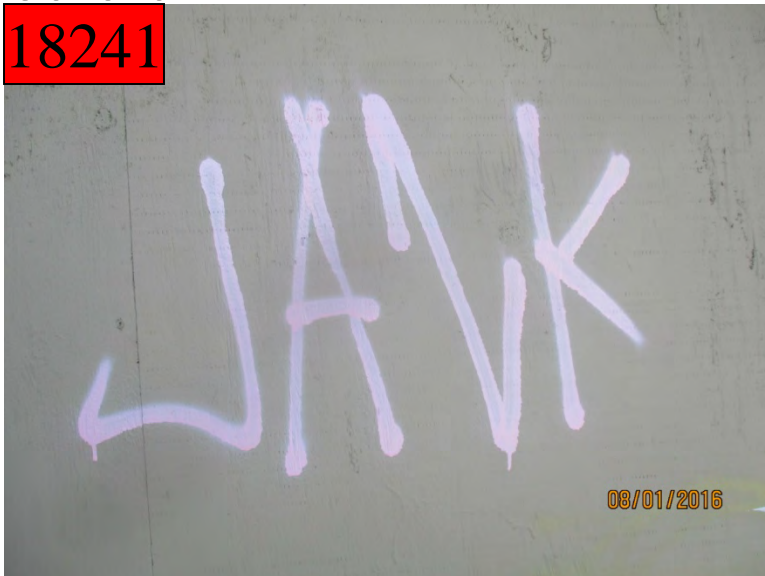
after



1643 Westheimer

before

18241



after



1643 Westheimer

before

18242



after



2405 Shepherd

before

18243



after



601 Richmond Ave

before
18244



after



Public Property

1700 Westheimer

before

18245



after



4100 Dunlavy

before

18246



after



2700 Windsor

before

18247



after



2700 Windsor

before

18248



after



2700 Windsor

before

18249



after



1500 Westheimer

before

18250



after



2700 Windsor

before

18251



after



2700 Windsor

before

18252



after



before

18253



2400 Ralph

after



before

18254



2400 Ralph

after



1600 Westheimer

before

18255



after



1600 Westheimer

before

18256



after



1600 Westheimer

before

18257



after



2500 Dunlavy

before

18258



after



2500 Dunlavy

before

18259



after



2500 Dunlavy

before

18260



after



before

18261

1900 Waugh

after



before

18262

1900 Waugh

after



before

18263



1900 Waugh

after



before

18264



1900 Waugh

after



before

18265

1400 Gray

after



before

18266

1400 Gray

after



before

18267

1400 Gray

after



Dumpsters

1637 Westheimer

before

18268



after



1637 Westheimer

before

18269



after



1637 Westheimer

before

18270



after



1637 Westheimer

before

18271



after



Improvement District # 6

Graffiti Abatement

Before and After Pictures

August 4, 2016

Private Property

1627 Westheimer

before

18272



after



1627 Westheimer

before

18273



after



before

3425 S Shepherd

after

18274



before

1901 W Alabama

after

18275



3425 S Shepherd

before

18276



after



1900 W Dallas

before

18277



after



Public Property

before

18278



2700 Lincoln

after



before

18279



1200 Westheimer

after



1200 Westheimer

before

18280



after



1200 Westheimer

before

18281



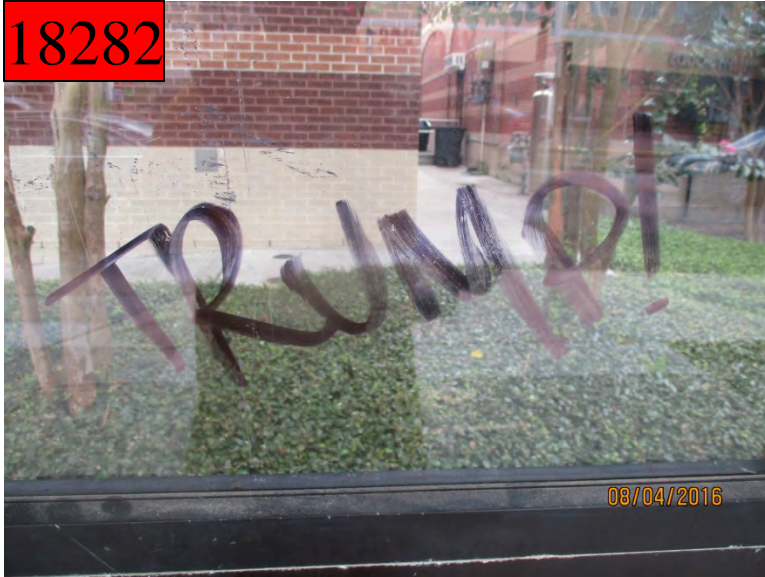
after



2300 Westheimer

before

18282



after



3400 S Shepherd

before

18283



after



2000 W Alabama

before

18284



after



1900 W Alabama

before

18285



after



1900 W Dallas

before

18286



after



Dumpsters

before

18287

1849 Hazard

after



Improvement District # 6

Graffiti Abatement

Before and After Pictures

August 8, 2016

Private Property

1201 Richmond

before

18288



after



1201 Richmond

before

18289



after



before

18290



1716 Dallas

after



before

18291



319 W Gray

after



4208 W Gray

before

18292



after



Public Property

before

18293



2700 Bagby

after



before

18294



2700 Bagby

after



1600 Westheimer

before

18295



after



1600 Westheimer

before

18296



after



before

18297

1400 Montrose

after



before

18298

1400 Montrose

after



before

18299



1600 Dallas

after



before

18300



1600 Dallas

after



before

18301



300 Dennis

after



before

18302



1500 Dallas

after



3000 W Dallas

before

18303



after



4400 Graustark

before

18304



after



4400 Graustark

before

18305



after



4400 Graustark

before

18306



after



2000 Westheimer

before
18307



after



2000 Westheimer

before
18308



after



1100 Richmond

before

18309



after



Dumpsters

before

18310



1712 Dallas

after



before

18311



1712 Dallas

after



before

18312



1712 Dallas

after



before

18313



1712 Dallas

after



before

18314

1100 Dallas

after



Improvement District # 6

Graffiti Abatement

Before and After Pictures

August 11, 2016

Private Property

before

18315

2517 Ralph

after



before

18316

2517 Ralph

after



before

18317

2517 Ralph

after



before

18318

2517 Ralph

after



Public Property

1300 Westheimer

before

18319



after



2600 Woodhead

before

18320



after



2600 Woodhead

before

18321



after



2600 Woodhead

before

18322



after



2600 Woodhead

before
18323



after



Improvement District # 6

Graffiti Abatement

Before and After Pictures

August 15, 2016

Public Property

before

1600 Montrose

after

18324



before

1600 Montrose

after

18325



before

18326

3300 Taft

after



before

18327

3300 Taft

after



before
18328

2200 Grant

after



before
18329

3700 Graustark

after



3700 Graustark

before

18330



after



3700 Graustark

before

18331



after



before
18332

1300 W Alabama

after



before
18333

4800 Hazard

after



before

18334

4800 Hazard

after



before

18335

4800 Hazard

after



before

18336

4800 Hazard

after



before

18337

4800 Hazard

after



4600 Mandell

before

18338



after



4600 Mandell

before

18339



after



4600 Mandell

before

18340



after



4600 Mandell

before

18341



after



1000 Richmond

before

18342



after



1000 Richmond

before

18343



after



1000 Richmond

before

18344



after



1000 Richmond

before

18345



after



1600 Richmond

before

18346



after



1800 Montrose

before

18347



after



before

1800 Montrose

after

18348



before

1800 Montrose

after

18349



before

1700 Montrose

after

18350



before

1700 Montrose

after

18351



1600 Stanford

before

18352



after



Dumpsters

1700 Montrose

before

18353



after



Improvement District # 6

Graffiti Abatement

Before and After Pictures

August 18, 2016

Private Property

before

18354



1722 Taft St

after



before

18355



1722 Taft St

after



615 W Alabama

before

18356



after



105 Tuam

before

18357



after



610 W Alabama

before

18358



after



Public Property

1900 W Dallas

before
18359



after

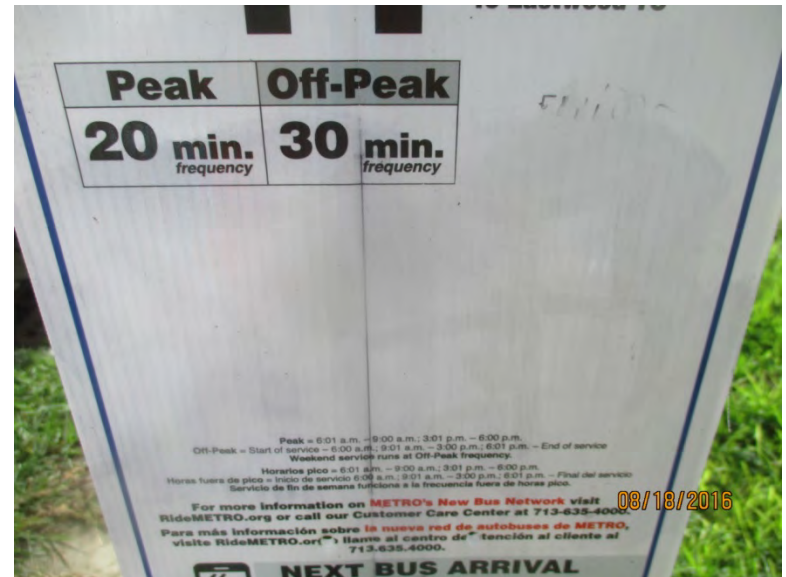


1900 W Dallas

before
18360



after



1700 W Dallas

before

18361



after



1100 Taft

before

18362



after



1600 W Dallas

before

18363



after



1600 W Dallas

before

18364



after



1900 W Dallas

before

18365



after



100 Tuam St

before

18366



after



before

18367

300 Tuam

after



before

18368

2900 Bagby

after



before

18369



200 Avondale

after



before

18370



200 Avondale

after



3000 Baldwin

before

18371



after



300 Colquitt

before

18372



after



1500 Richmond

before

18373



after



1500 Richmond

before

18374



after



3300 Graustark

before

18375



after



700 Hyde Park

before

18376



after



1900 Richmond

before

18377



after



1900 Richmond

before

18378



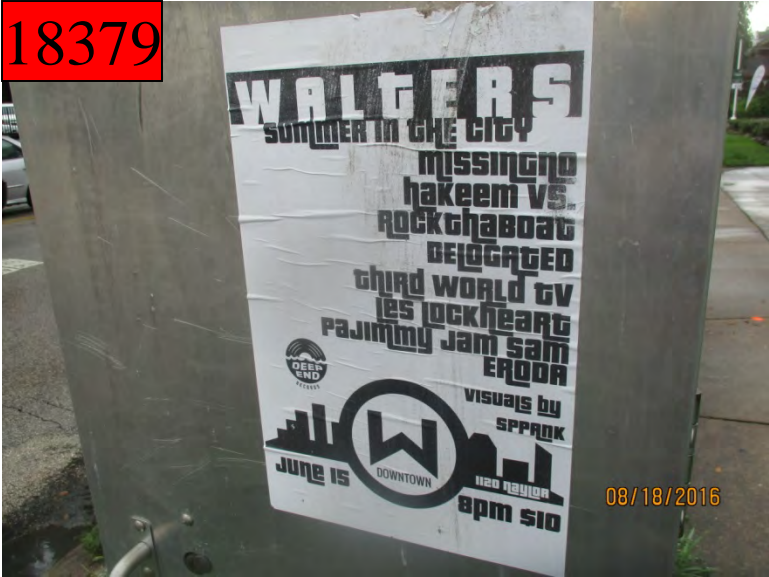
after



before
18379

1000 W Alabama

after



before
18380

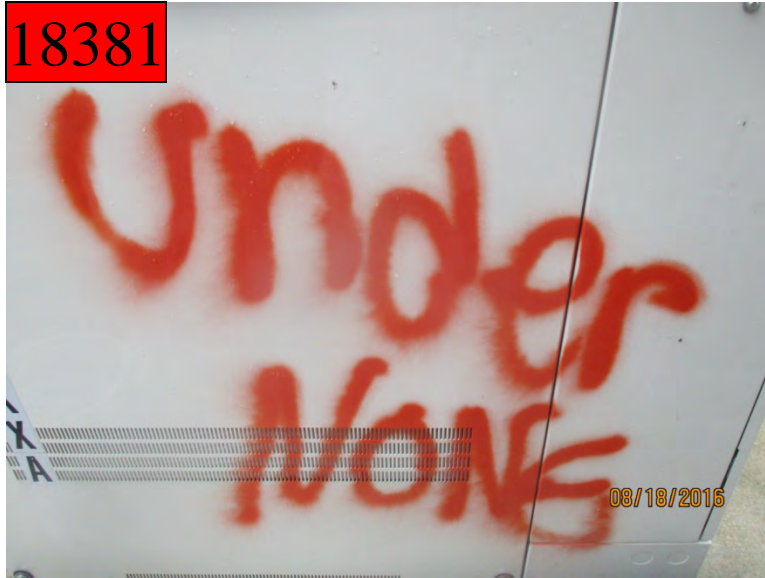
1000 W Alabama

after



before

18381



3900 Brandt

after



before

18382



1200 W Alabama

after



before

18383

200 Westheimer

after



before

18384

200 Westheimer

after



18385

3300 Stanford

after



18386

3700 Garret

after



Improvement District # 6

Graffiti Abatement

Before and After Pictures

August 22, 2016

Private Property

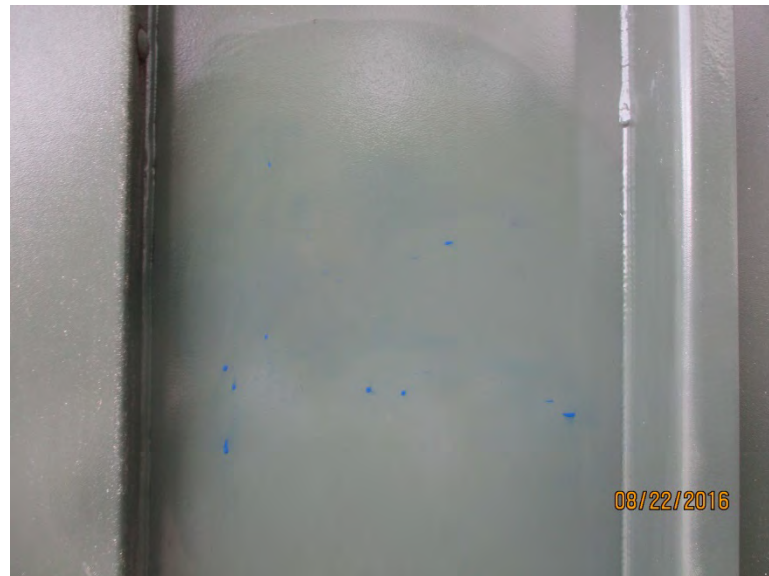
4306 Yoakum

before

18387



after



515 Westheimer

before

18388



after



before
18389

515 Westheimer

after



before
18390

515 Westheimer

after



before

3317 Montrose

after

18391



before

3317 Montrose

after

18392



Public Property

1900 W Dallas

before

18393



after



1100 Richmond

before

18394



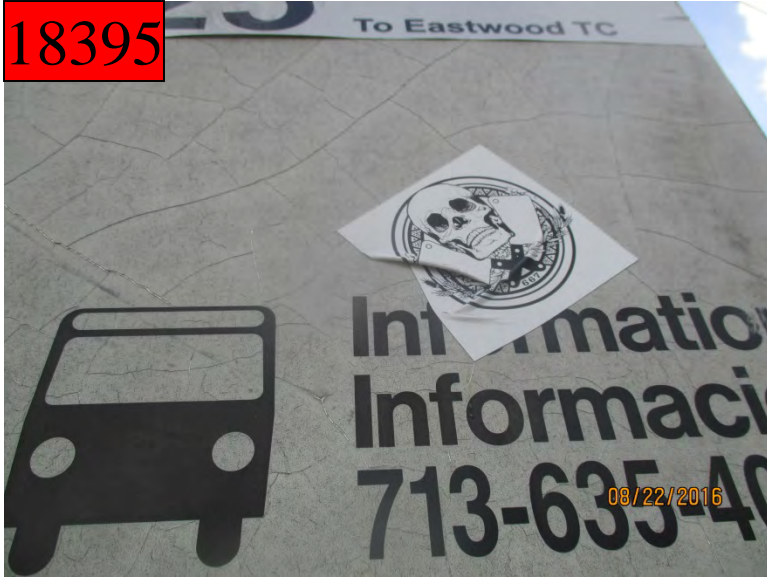
after



1200 Richmond

before

18395



after



1200 Richmond

before

18396



after



4500 Graustark

before

18397



after



4500 Graustark

before

18398



after



4300 Graustark

before

18399



after



4300 Graustark

before

18400



after



1200 Richmond

before

18401



after



1200 Richmond

before

18402



after



1000 Richmond

before

18403



after



1000 Richmond

before

18404



after



1000 Richmond

before

18405



after



1000 Richmond

before

18406



after



before

18407



100 Portland

after



before

18408



1200 Barkdull

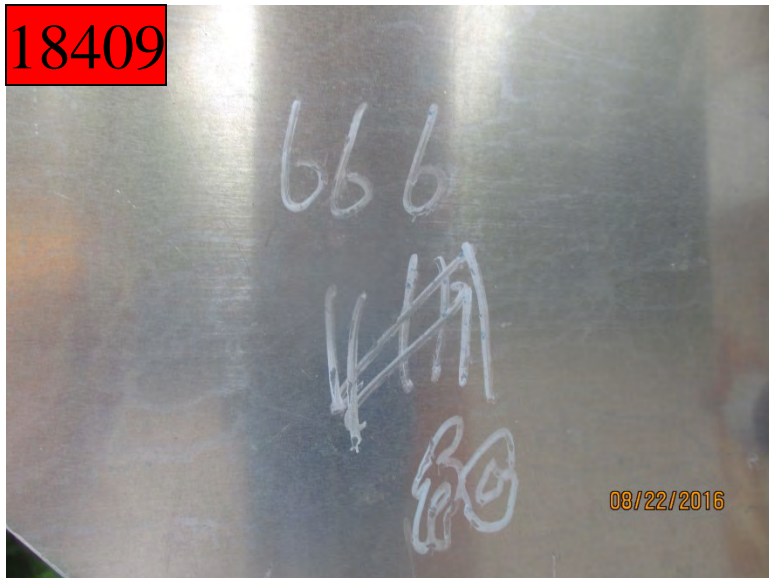
after



1200 Barkdull

before

18409



after



1200 Barkdull

before

18410



after



4900 Graustark

before

18411



after



4800 Graustark

before

18412



after



before

18413



1100 Autrey

after



before

18414



200 Portland

after



before

18415



600 Oakley

after



before

18416



2000 Westheimer

after



before

18417

2300 Driscoll

after



before

18418

1900 Fairview

after



2300 Woodhead

before

18419



after



1400 Woodhead

before

18420



after



before

18421

2400 Elmen

after



before

18422

3300 Montrose

after



before

18423

3300 Montrose

after



before

18424

3300 Montrose

after



1100 Missouri

before

18425



after



Dumpsters

1618 Westheimer

before

18426



after



2036 Westheimer

before

18427



after



before

1602 Bonnie Brae

after

18428



before

1602 Bonnie Brae

after

18429



before

18430



1847 W Alabama

after



Improvement District # 6

Graffiti Abatement

Before and After Pictures

August 25, 2016

Private Property

before

208 Westheimer

after

18431



before

208 Westheimer

after

18432



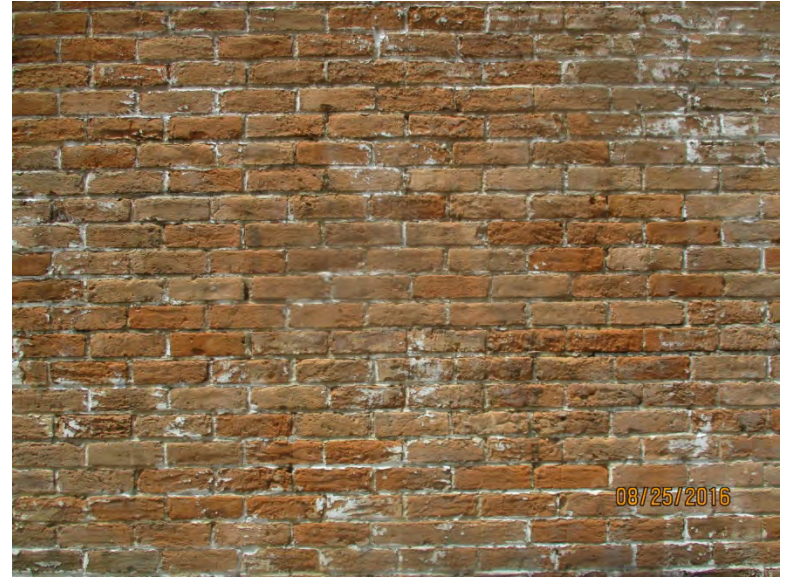
503 Westheimer

before

18433



after



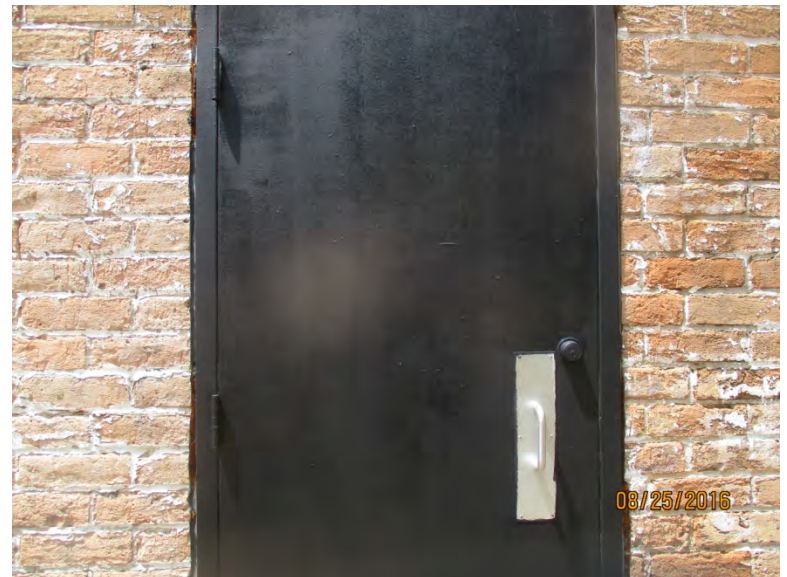
503 Westheimer

before

18434



after



503 Westheimer

before

18435



after



503 Westheimer

before

18436



after



1201 Westheimer

before

18437



after



1201 Westheimer

before

18438



after



1201 Westheimer

before

18439



after



1201 Westheimer

before

18440



after



1407 Hawthorne

before

18441



after



1407 Hawthorne

before

18442



after



1407 Hawthorne

before

18443



after



Public Property

before

18444

1400 Hawthorne

after



before

18445

1400 Hawthorne

after



before

18446

1400 Hawthorne

after

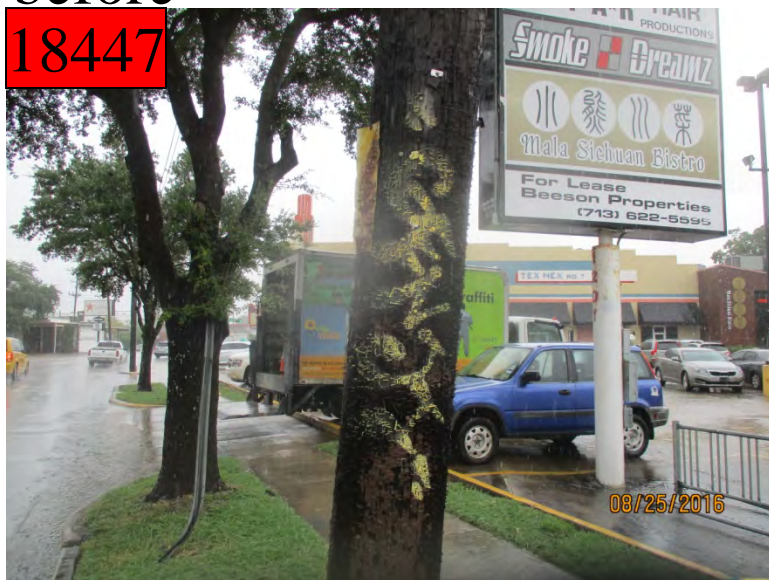


before

18447

1200 Westheimer

after



1700 Westheimer

before
18448



after



1600 Westheimer

before
18449



after



2400 Dunlavy

before

18450



after



2400 Dunlavy

before

18451



after



1100 Bissonnet

before

18452



after



1100 Bissonnet

before

18453



after



before

1100 Bissonnet

after

18454



before

1100 Bissonnet

after

18455



before

1100 Bissonnet

after

18456



before

1100 Bissonnet

after

18457



1300 Fairview

before

18458



after



2300 Montrose

before

18459



after



before

18460



3000 Dallas

after



before

18461



2900 Dallas

after



before

18462



2400 Ralph

after



before

18463



1100 Shepherd

after



2500 Dunlavy

before

18464



after



2500 Dunlavy

before

18465



after



2500 Dunlavy

before

18466



after



2500 Dunlavy

before

18467



after



2500 Dunlavy

before

18468



after



2500 Dunlavy

before

18469



after



2500 Dunlavy

before

18470



after



2500 Dunlavy

before

18471



after



2500 Dunlavy

before

18472



after



Dumpsters

1111 Shepherd

before

18473



after



Improvement District # 6

Graffiti Abatement

Before and After Pictures

August 29, 2016

Private Property

3300 Montrose

before

18474



after



3300 Montrose

before

18475



after



before

18476

1800 Montrose

after



before

18477

1100 California

after



Public Property

before
18478

1600 Montrose

after



before
18479

1600 Montrose

after



1400 Woodhead

before

18480



after



1800 Commonwealth

before

18481



after



before

18482

800 Richmond

after



before

18483

2600 Waugh

after



before

18484

2600 Waugh

after



before

18485

2600 Waugh

after



1000 Westheimer

before

18486



after



1000 Westheimer

before

18487



after



1600 Westheimer

before

18488



after



3300 Mandell

before

18489



after



1700 Westheimer

before

18490



after



1700 Westheimer

before

18491



after



before

18492

2600 Hazard

after



before

18493

2600 Woodhead

after



before

18494

300 Westheimer

after



before

18495

300 Westheimer

after



300 Westheimer

before
18496



after



300 Westheimer

before
18497



after



1100 California

before

18498



after



Dumpsters

1700 Montrose

before

18499



after

