

Montrose District



Graffiti Abatement Reports

April 2016

Montrose District

Monthly Graffiti Abatement Reports 2016

Abated	Jan	Feb	Mar	Apr	May	June	July	Aug	Sept	Oct	Nov	Dec	2016 Total
Business Property	61	83	78	48									270
Public Property	231	197	171	157									756
Trash Dumpsters	26	10	17	17									70
Total:	318	290	266	222									1096

Graffiti Abatement Reports Totals 2008 - 2016										
	2008	2009	2010	2011	2012	2013	2014	2015	2016	Totals
Abated										
Business Property	184	98	144	563	522	467	747	835	270	3,830
Public Property	538	771	935	1,802	1,724	1839	2356	2271	756	12,992
Trash Dumpsters	28	40	48	59	114	84	82	134	70	659
Total:	750	909	1,127	2,424	2,360	2,390	3,185	3,240	1,096	17,481

Improvement District # 6

Graffiti Abatement

Before and After Pictures

April 4, 2016

Private Property

215 Westheimer

before

17260



after



2700 Windsor

before

17261



after



1600 Westheimer

before

17262



after



1800 Westheimer

before

17263



after



before

17264

1717 Norfolk

after



Public Property

1500 Westheimer

before

17265



after



1600 Westheimer

before

17266



after



1600 Westheimer

before

17267



after



1800 Westheimer

before

17268



after



before

17269



1800 Westheimer

after



before

17270



1800 Westheimer

after



before

17271



2600 Hazard

after



before

17272



2600 Hazard

after



before

17273

2500 Hazard

after



before

17274

2500 Hazard

after



before

17275

2500 Hazard

after



before

17276

1700 Richmond

after



Dumpsters

1500 Westheimer

before

17277



after



1425 Westheimer

before

17278



after



1425 Westheimer

before

17279



after



1425 Westheimer

before

17280



after



1425 Westheimer

before

17281



after



1425 Westheimer

before

17282



after



1425 Westheimer

before

17283



after



1425 Westheimer

before

17284



after



1435 Westheimer

before

17285



after



Improvement District # 6

Graffiti Abatement

Before and After Pictures

April 8, 2016

Private Property

500 W Alabama

before

17286



after



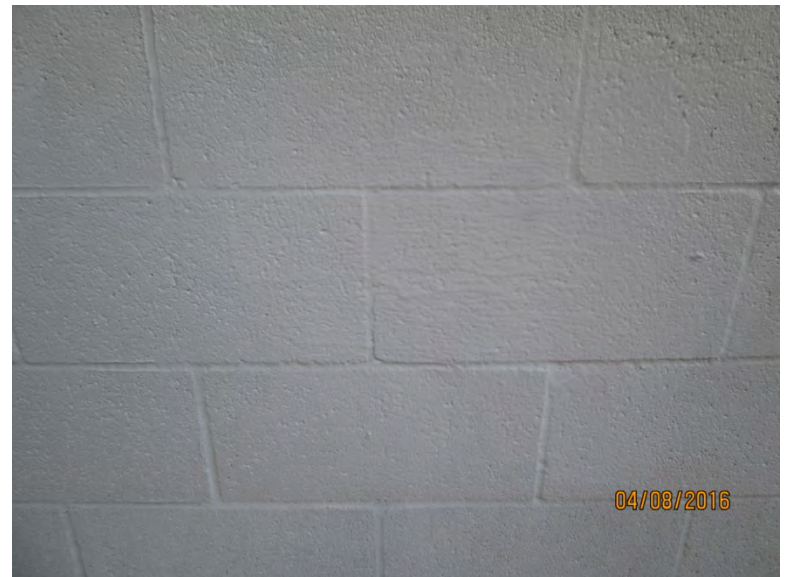
500 W Alabama

before

17287



after



1400 Vermont

before

17288



after



1400 Vermont

before

17289



after



before

17290



1700 Taft

after



before

17291



1700 Taft

after

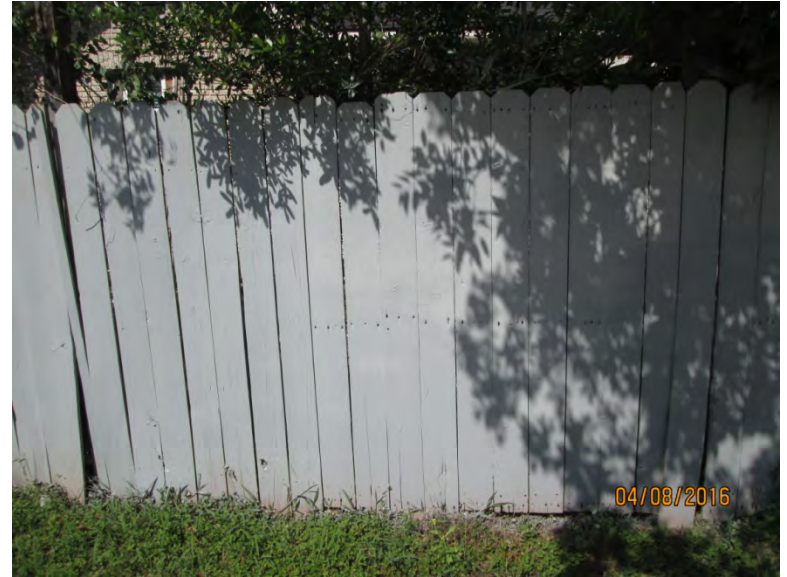


before

17292

1500 Taft

after



Public Property

2000 Westheimer

before

17293



after



2000 Westheimer

before

17294



after



2000 Westheimer

before

17295



after



500 Westheimer

before

17296



after



2800 Stanford

before

17297



after



400 Avondale

before

17298



after



2000 Montrose

before

17299



after



1500 Taft

before

17300



after



before

17301

200 W Gray

after



before

17302

200 W Gray

after



before

17303

300 W Gray

after



before

17304

1800 Taft

after



before

17305

3300 Taft

after



before

17306

3300 Taft

after



before

17307

3300 Taft

after



before

17308

3300 Taft

after



before

17309

3300 Taft

after



before

17310

500 Lovett

after



before

17311

700 Harold

after



before

17312

200 Hyde Park

after



before

17313



3900 Brandt

after



before

17314



3900 Brandt

after



Dumpsters

1400 Vermont

before

17315



after



Improvement District # 6

Graffiti Abatement

Before and After Pictures

April 11, 2016

Private Property

before

17316

2200 Converse

after

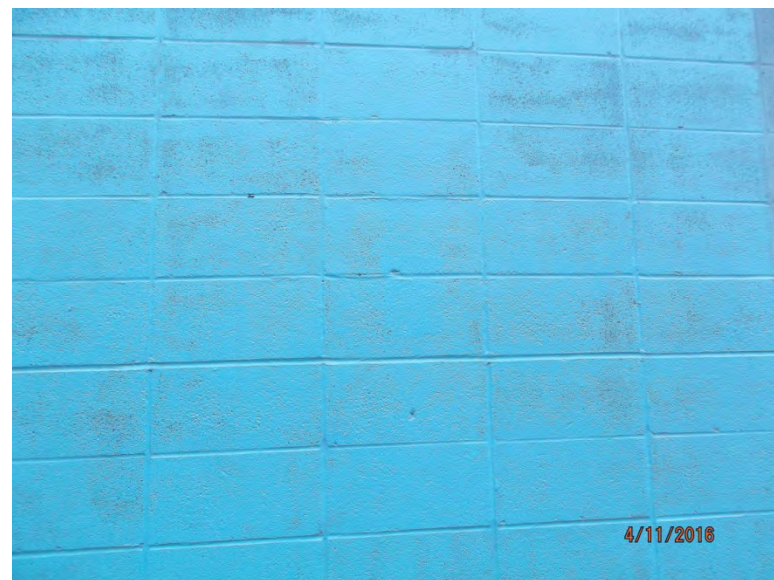


before

17317

2200 Converse

after



1000 Westheimer

before

17318



after



1000 Westheimer

before

17319



after



1600 Westheimer

before

17320



after



1600 Westheimer

before

17321



after



1600 Westheimer

before

17322



after



1600 Westheimer

before

17323



after



1600 Westheimer

before

17324



after



1600 Westheimer

before

17325



after



1600 Westheimer

before

17326



after



1600 Westheimer

before

17327



after



Public Property

1700 Montrose

before
17328

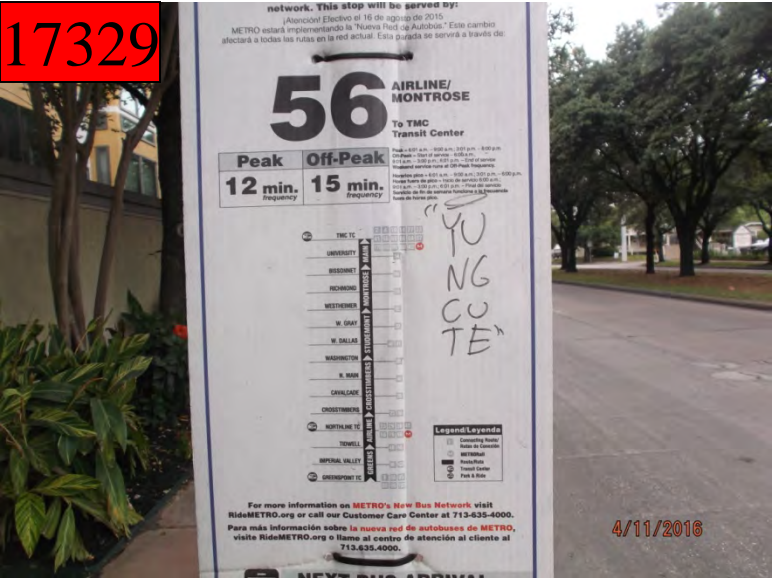


after



1700 Montrose

before
17329



after



before

17330

2000 Montrose

after



before

17331

900 Hyde Park

after



1600 Westheimer

before

17332



after



1600 Westheimer

before

17333



after



1600 Westheimer

before

17334



after



1600 Westheimer

before

17335



after



1700 Westheimer

before

17336



after



1700 Westheimer

before

17337



after



1700 Westheimer

before

17338



after



1300 Stanford

before

17339



after



3300 Dunlavy

before

17340



after



3300 Dunlavy

before

17341



after



before

17342

3800 Jack

after



before

17343

3900 Jack

after



3300 Mandell

before

17344



after



3300 Mandell

before

17345



after



3300 Mandell

before

17346



after



Dumpsters

1600 Westheimer

before

17347



after



1600 Westheimer

before

17348



after



Improvement District # 6

Graffiti Abatement

Before and After Pictures

April 15, 2016

Private Property

before

17349



807 Fairview

after



before

17350



1011 Robin

after



before

17351



1721 Waugh

after



before

17352



1439 Dunlavy

after



before

17353

1404 Welch

after



Public Property

before

17354

800 Fairview

after



before

17355

700 Fairview

after



before

17356



600 Fairview

after



before

17357



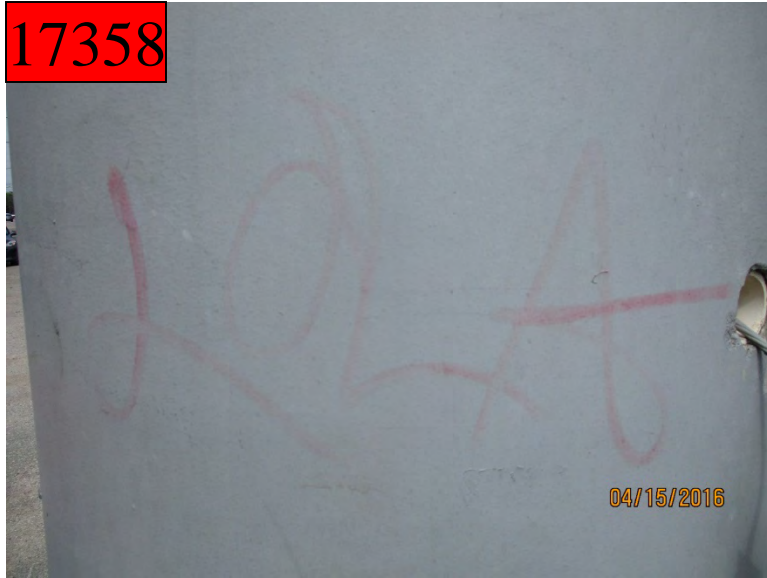
600 Fairview

after



before

17358



600 Fairview

after



before

17359



600 Fairview

after



before

17360



2000 Waugh

after



before

17361



2000 Waugh

after



before

17362

2000 Commonwealth

after



before

17363

2000 Commonwealth

after



before

17364

2100 Commonwealth

after



before

17365

1500 Welch

after



before

17366



1500 Welch

after



before

17367



1500 Nevada

after



before

17368

1500 Nevada

after



before

17369

1500 Nevada

after



before

17370

1500 Nevada

after



Dumpsters

before

17371



800 Rosedale

after



before

17372



800 Rosedale

after



before

17373



700 Fairview

after



before

17374



700 Fairview

after



Improvement District # 6

Graffiti Abatement

Before and After Pictures

April 19, 2016

Private Property

1600 Westheimer

before

17375



after



1600 Westheimer

before

17376



after



1600 Westheimer

before

17377



after



1600 Westheimer

before

17378



after



1600 Westheimer

before

17379



after



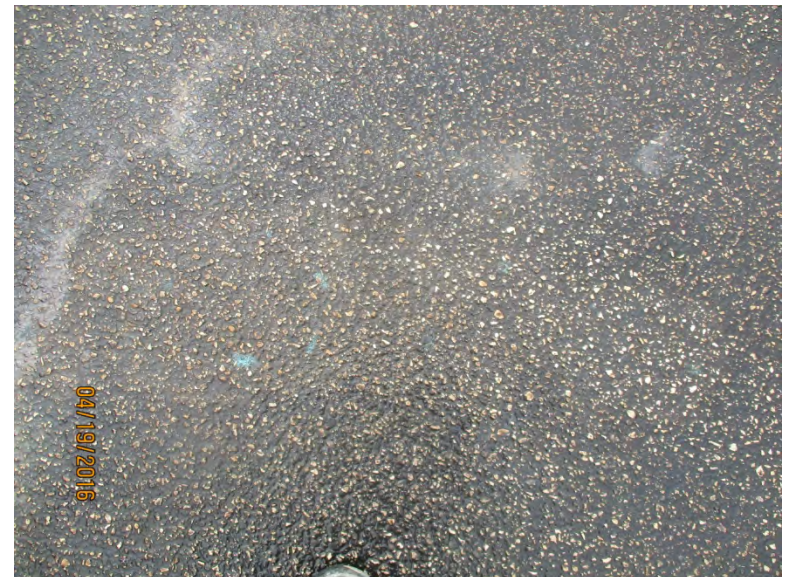
1600 Westheimer

before

17380



after



6000 Westheimer

before
17381



after



Public Property

1600 Westheimer

before

17382



after



1600 Westheimer

before

17383



after



1700 Westheimer

before

17384



after



1700 Westheimer

before

17385



after



1700 Westheimer

before

17386



after



1700 Westheimer

before

17387



after



1700 Westheimer

before

17388



after



1700 Westheimer

before

17389



after



1200 Westheimer

before

17390



after



1200 Westheimer

before

17391



after



1600 Westheimer

before

17392



after



1600 Westheimer

before

17393



after



1700 Westheimer

before

17394



after



1700 Westheimer

before

17395



after



1700 Westheimer

before

17396



after



1700 Westheimer

before

17397



after



2700 Waughcrest

before

17398



after



2500 Huldy St

before

17399



after



1600 Westheimer

before

17400



after



1600 Westheimer

before

17401



after



1600 Westheimer

before

17402



after



1600 Westheimer

before

17403



after



Dumpsters

1600 Westheimer

before

17404



after



Improvement District # 6

Graffiti Abatement

Before and After Pictures

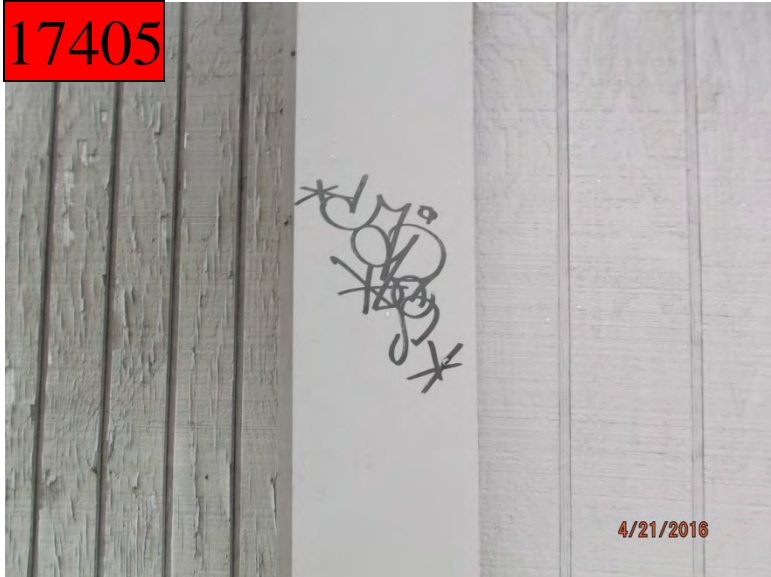
April 21, 2016

Private Property

4600 Graustark

before

17405



after



before

17406

1200 Waugh



after



Public Property

before

17407

2600 Taft

after



before

17408

400 Lovett

after



before

17409

3300 Taft

after



before

17410

3300 Taft

after



3300 Whitney

before

17411



after



502 W Alabama

before

17412



after



1700 Westheimer

before

17413



after



2700 Dunlavy

before

17414



after



before

17415

3400 Yupon

after



before

17416

3400 Yupon

after



1300 Hawthorne

before

17417



after



3700 Mt Vernon

before

17418



after



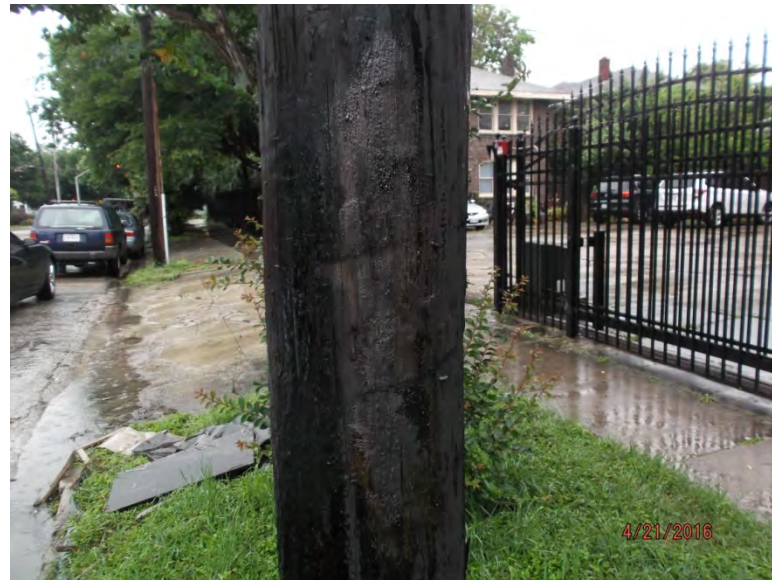
3300 Mandell

before

17419



after



3300 Mandell

before

17420



after



3200 Stanford

before

17421



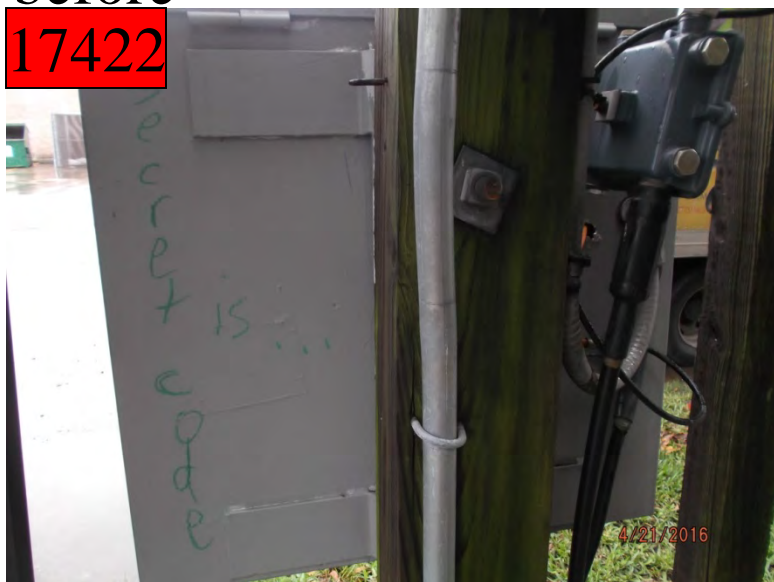
after



3200 Stanford

before

17422



after



4600 Woodhead

before

17423



after



4600 Woodhead

before

17424



after



before

17425

1100 Banks

after



before

17426

1100 Banks

after



before

17427

1100 Banks

after



before

17428

1100 Banks

after



before

17429

1100 Banks

after



before

17430

4300 Woodhead

after



before

17431

800 W Clay

after



before

17432

800 W Clay

after



before

17433



800 W Clay

after



before

17434



1200 Waugh

after



before
17435

500 W Gray

after



before
17436

500 W Gray

after



Improvement District # 6

Graffiti Abatement

Before and After Pictures

April 25, 2016

Private Property

500 W Alabama

before

17437



after



500 W Alabama

before

17438



after



before

17439

1200 Waugh

after



before

17440

1200 Waugh

after



before

17441

1200 Waugh

after

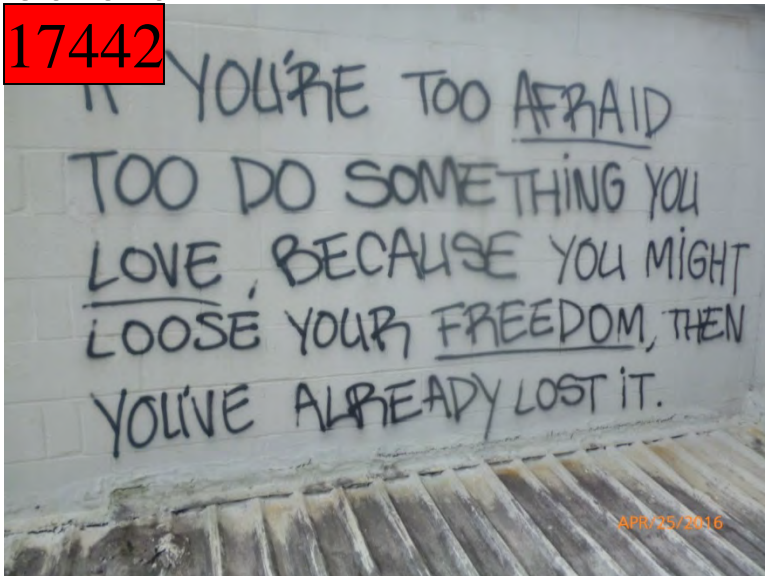


before

17442

1200 Waugh

after



before

17443

1200 Waugh

after



before

17444

1000 Montrose

after



before

17445

1000 Montrose

after



before

17446

1000 Montrose

after



Public Property

before

17447

1200 Waugh

after



before

17448

1200 Waugh

after



2600 W Dallas St

before

17449



after



2600 W Dallas St

before

17450



after



before

17451

1000 Montrose

after



before

17452

1000 Montrose

after



before
17453

1000 Montrose

after



before
17454

500 W Alabama

after



before

17455

1200 Montrose

after



before

17456

1200 Montrose

after



2300 W Dallas

before

17457



after



2300 W Dallas

before

17458



after



17459

after



17460

after



3600 W Dallas

before

17461



after



900 Dunlavy

before

17462



after



1900 Dunlavy

before

17463



after



1900 Dunlavy

before

17464



after



2400 Dunlavy

before

17465



after



2400 Dunlavy

before

17466



after



Improvement District # 6

Graffiti Abatement

Before and After Pictures

April 30, 2016

Public Property

before

17467

1600 Indiana

after



before

17468

1600 Indiana

after



1200 Richmond

before

17469



after



2300 Windsor

before

17470



after



before

17471

2500 Elm

after



before

17472

2500 Elm

after



before
17473

2500 Elm

after



before
17474

1900 Welch

after



before

17475

900 W Gray

after



before

17476

900 W Gray

after



before

17477

900 W Gray

after



before

17478

800 W Gray

after



before

17479



700 W Gray

after



before

17480



1300 Crocker

after



300 Stratford

before

17481



after

