

Montrose District



Graffiti Abatement Reports

December 2015

Montrose District

Monthly Graffiti Abatement Reports 2015

Abated	Jan	Feb	Mar	Apr	May	June	July	Aug	Sept	Oct	Nov	Dec	2015 Total
Business Property	60	51	75	67	41	75	57	55	86	105	84	79	835
Public Property	190	195	213	225	164	169	204	199	184	203	155	170	2271
Trash Dumpsters	6	6	8	9	11	8	11	7	8	19	14	27	134
Total:	256	252	296	301	216	252	272	261	278	327	253	281	3240

Graffiti Abatement Reports Totals 2008 - 2015									
	2008	2009	2010	2011	2012	2013	2014	2015	Totals
Abated									
Business Property	184	98	144	563	522	467	747	835	3,560
Public Property	538	771	935	1,802	1,724	1839	2356	2271	12,236
Trash Dumpsters	28	40	48	59	114	84	82	134	589
Total:	750	909	1,127	2,424	2,360	2,390	3,185	3,240	16,385

Improvement District # 6

Graffiti Abatement

Before and After Pictures

December 4, 2015

Private Property

1641 Westheimer

before

16110



after



1657 Westheimer

before

16111



after



1657 Westheimer

before

16112



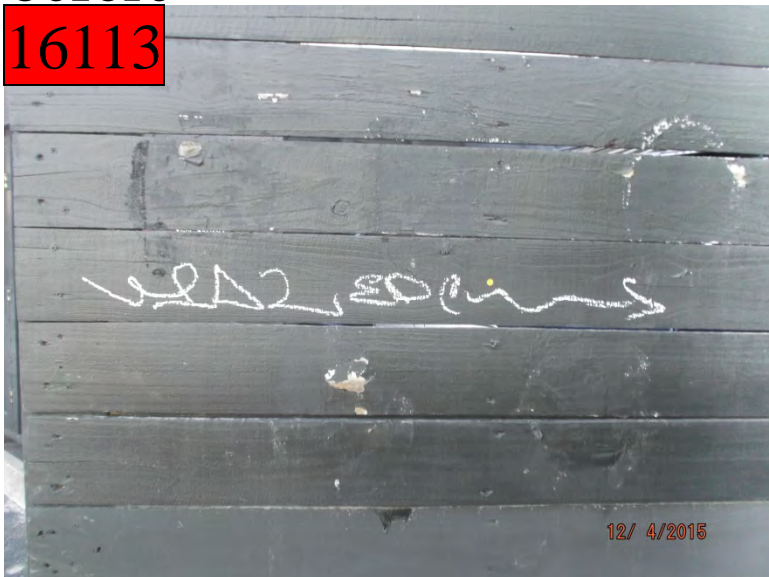
after



1657 Westheimer

before

16113



after



before

16114

2901 Taft

after



before

16115

2901 Taft

after



before

403 Westheimer

after

16116



before

2501 S Shepherd

after

16117



2419 S Shepherd

before

16118



after



2419 S Shepherd

before

16119



after



2419 S Shepherd

before

16120



after



2525 S Shepherd

before

16121



after



2200 Converse

before

16122



after



2200 Converse

before

16123



after



507 Westheimer

before

16124



after



208 Westheimer

before

16125



after



2205 Montrose

before

16126



after



2205 Montrose

before

16127



after



2205 Montrose

before

16128



after



2205 Montrose

before

16129



after



2205 Montrose

before

16130



after



2301 Montrose

before

16131



after



Public Property

before

16132



1900 Taft

after



before

16133



1900 Taft

after



before

16134



300 Fairview

after



before

16135



300 Fairview

after



before

16136



300 Fairview

after



Dumpsters

1629 Westheimer

before

16137



after



1629 Westheimer

before

16138



after



1629 Westheimer

before

16139



after



Improvement District # 6

Graffiti Abatement

Before and After Pictures

December 7, 2015

Private Property

1901 Richmond

before

16140



after



1901 Richmond

before

16141



after



1901 Richmond

before

16142



after



1660 Westheimer

before

16143



after



2124 S Shepherd

before

16144



after



2124 S Shepherd

before

16145



after



before

16146

2124 S Shepherd

after



before

16147

2124 S Shepherd

after



before

16148

922 W Alabama

after



before

16149

922 W Alabama

after



3300 Montrose

before

16150



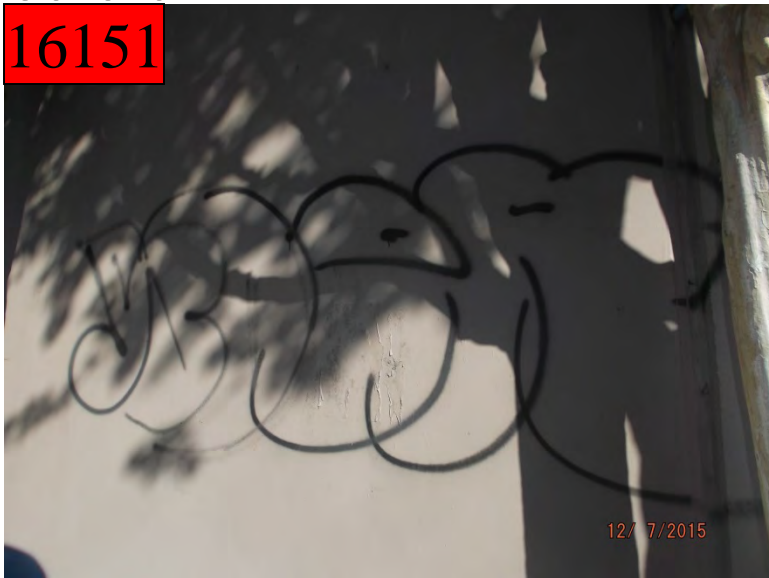
after



3300 Montrose

before

16151



after



Public Property

2400 Woodhead

before

16152



after



2400 Woodhead

before

16153



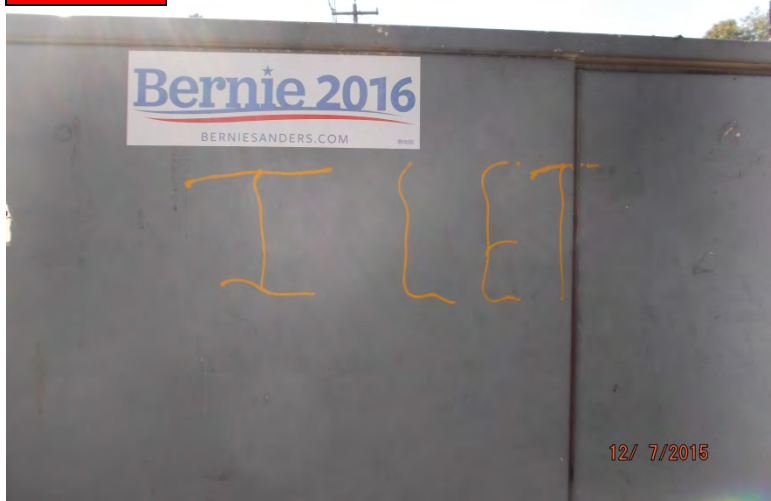
after



2400 Woodhead

before

16154



after



2400 Woodhead

before

16155



after



2400 Woodhead

before

16156



after



1800 Dunlavy

before

16157



after



2600 Dunlavy

before

16158



after



2600 Dunlavy

before

16159



after



4700 Montrose

before

16160



after



1000 Milford

before

16161



after



before

16162



1000 Milford

after



before

16163



1000 Milford

after



Dumpsters

1629 Westheimer

before

16164



after



1629 Westheimer

before

16165



after



1629 Westheimer

before

16166



after



1629 Westheimer

before

16167



after



Improvement District # 6

Graffiti Abatement

Before and After Pictures

December 11, 2015

Private Property

1921 Westheimer

before

16168



after



1201 Westheimer

before

16169



after



3415 S Shepherd

before

16170



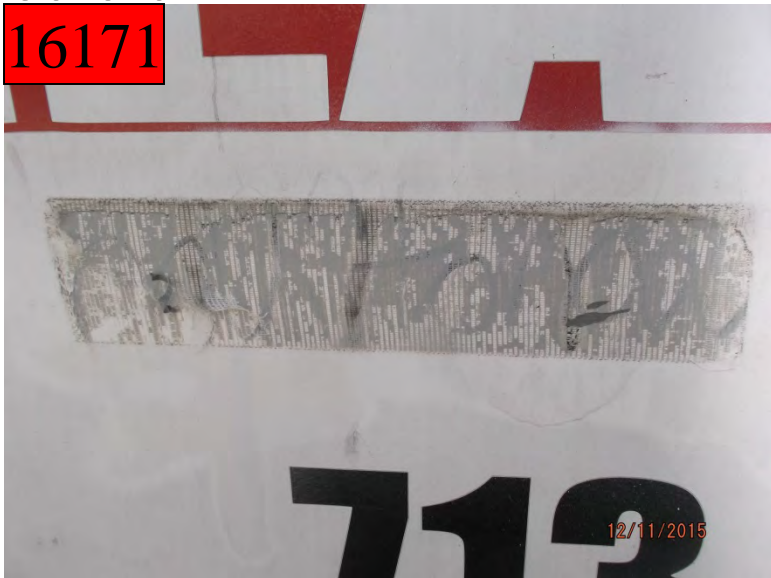
after



2415 S Shepherd

before

16171



after



before

16172

3700 Garrett

after



Public Property

before
16173

1100 W Gray

after



before
16174

1100 W Gray

after



before

16175

1100 W Gray

after



before

16176

1100 Welch

after



2100 Van Buren

before

16177



after



2100 Van Buren

before

16178



after



before

16179

1900 Montrose

after



before

16180

1900 Montrose

after



before

16181

5200 Bayard

after



before

16182

5200 Bayard

after



before

16183

5200 Bayard

after



before

16184

5200 Bayard

after



before

16185

5200 Bayard

after



before

16186

5200 Bayard

after



before

5200 Montrose

after

16187



before

5200 Montrose

after

16188



before

16189

4200 Mandel

after



before

16190

3900 McDuffie

after



1800 Sul Ross

before

16191



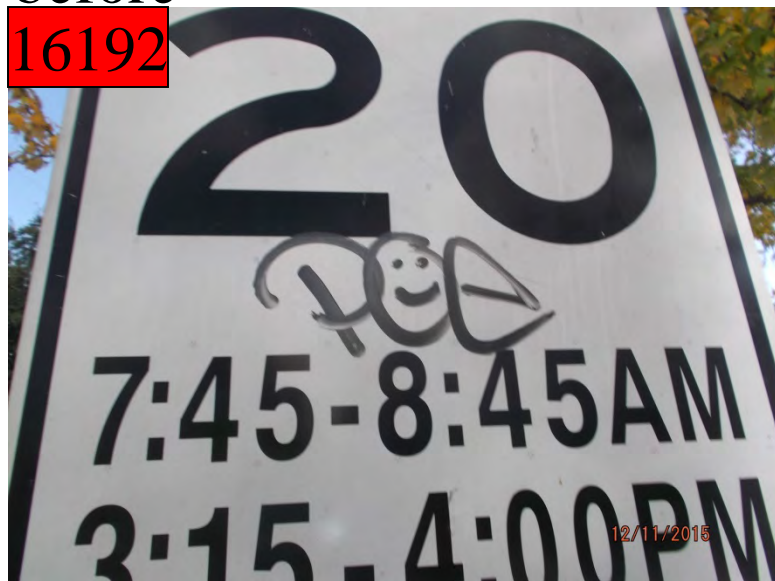
after



1800 Sul Ross

before

16192



after



1800 Sul Ross

before

16193



after



1800 Sul Ross

before

16194



after



1800 Sul Ross

before

16195



after



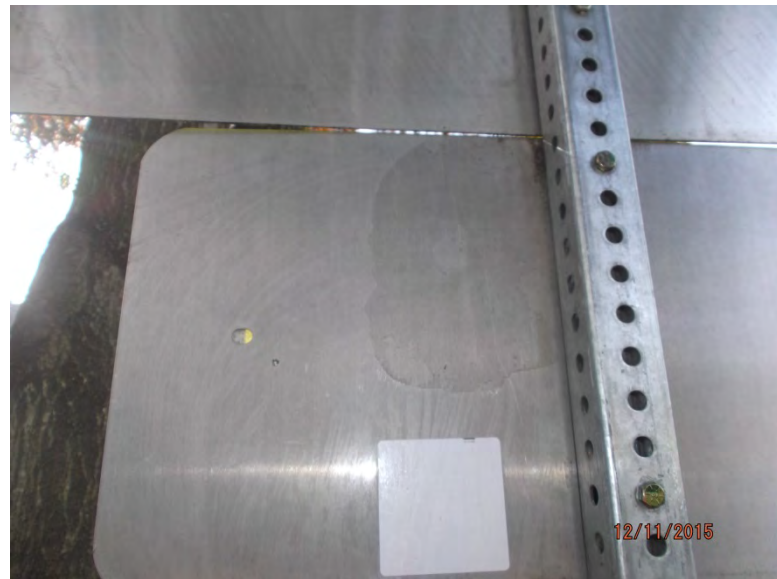
1800 Sul Ross

before

16196



after

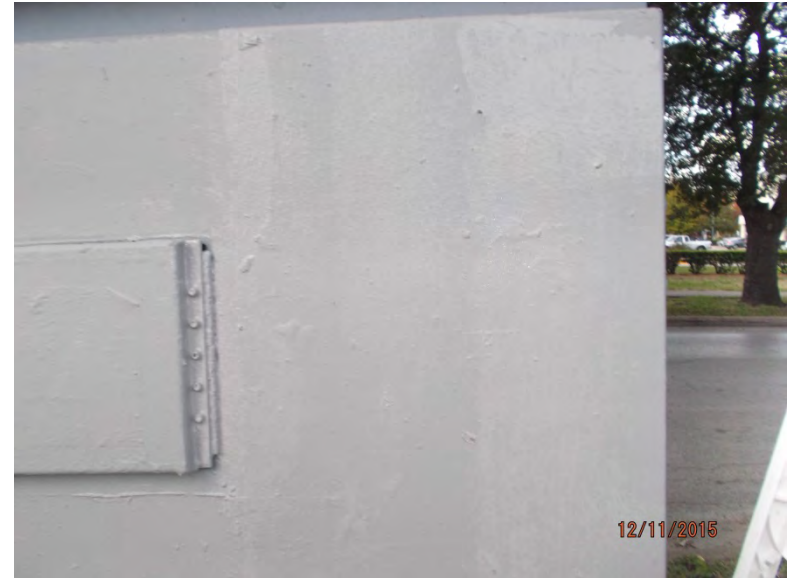
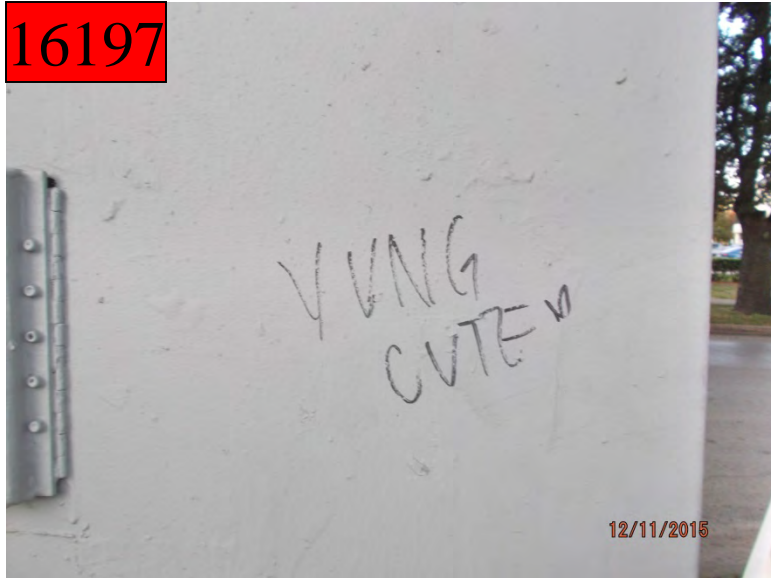


before

16197

3400 Montrose

after



before

16198

3400 Montrose

after



before

16199

3400 Montrose

after



before

16200

3400 Montrose

after



1900 W Alabama

before

16201



after



2100 Crocker

before

16202



after



before

16203

2400 Mason

after



before

16204

2400 Mason

after



before

16205

2400 Mason

after



Dumpsters

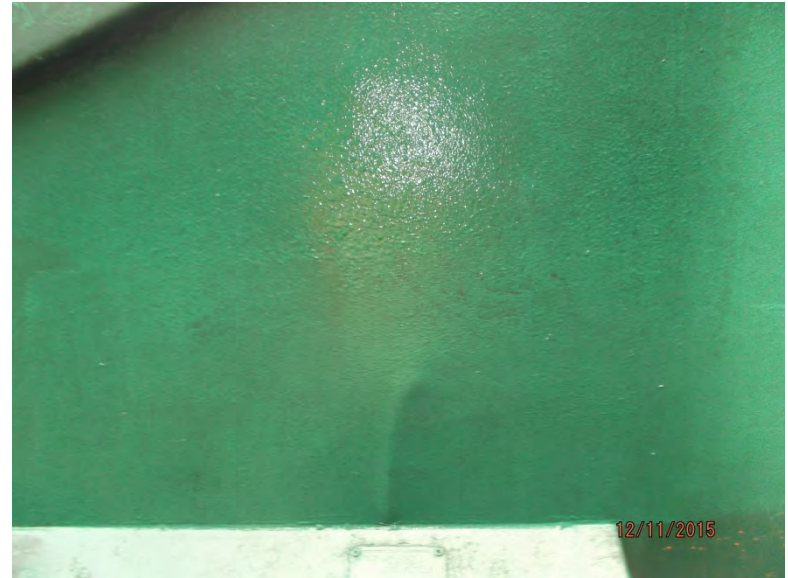
1629 Westheimer

before

16206



after



1629 Westheimer

before

16207



after



1629 Westheimer

before

16208



after



1000 Willard

before

16209



after



before

16210



1000 Willard

after



before

16211



1000 Willard

after



Improvement District # 6

Graffiti Abatement

Before and After Pictures

December 14, 2015

Private Property

before

16212



819 W Drew

after



before

16213



819 W Drew

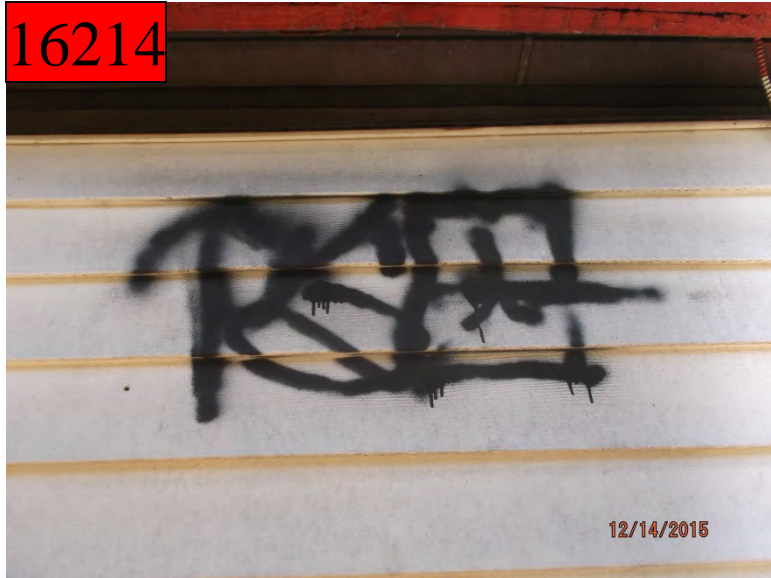
after



1425 Westheimer

before

16214



after



4407 Yoakum

before

16215



after



before

16216

503 Westheimer

after



before

16217

503 Westheimer

after



before

16218

1902 Commonwealth

after



Public Property

1700 Westheimer

before

16219



after



2200 Commonwealth

before

16220



after



before

16221



300 Pacific

after



before

16222



2400 Genesee

after



2400 Genesee

before

16223



after



2400 Genesee

before

16224



after



2400 Genesee

before

16225



after



2400 Genesee

before

16226



after



2300 Genesee

before

16227



after



2100 Van Buren

before

16228



after



1600 Richmond

before

16229



after



1600 Richmond

before

16230



after



2100 Van Buren

before

16231



after



2000 Montrose

before

16232



after



before

2000 Montrose

after

16233



before

2000 Montrose

after

16234



before

16235

2700 Taft

after



before

16236

2700 Taft

after



before

16237

2700 Taft

after



before

16238

2700 Taft

after



before

16239

2700 Taft

after



before

16240

400 Lovett

after



3300 Montrose

before

16241



after



Dumpsters

1629 Westheimer

before

16242



after



Improvement District # 6

Graffiti Abatement

Before and After Pictures

December 17, 2015

Private Property

1900 W Alabama

before

16243



after



1900 W Alabama

before

16244



after



4200 McDuffie

before

16245



after



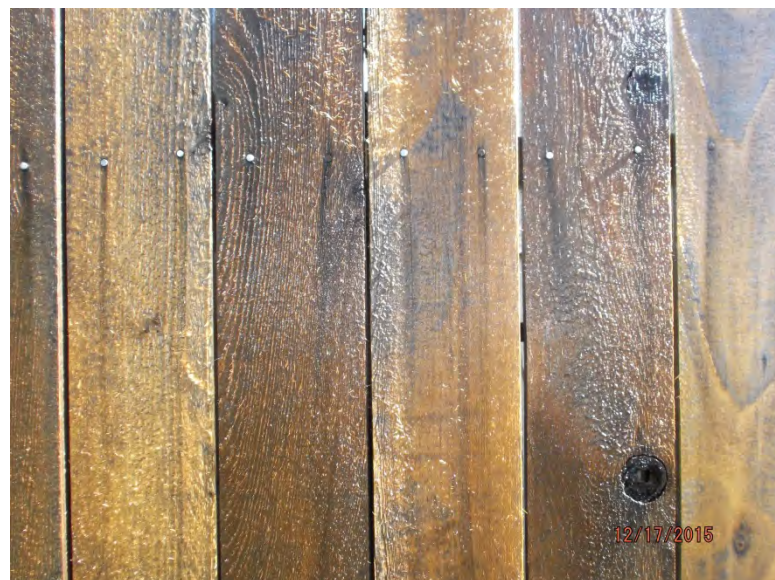
4200 McDuffie

before

16246



after



2019 S Shepherd

before

16247



after



2019 S Shepherd

before

16248



after



before

16249



2019 S Shepherd

after



before

16250



2019 S Shepherd

after



4000 Woodhead

before

16251



after



819 W Drew

before

16252



after



Public Property

1700 W Alabama

before

16253



after



3900 Driscoll

before

16254

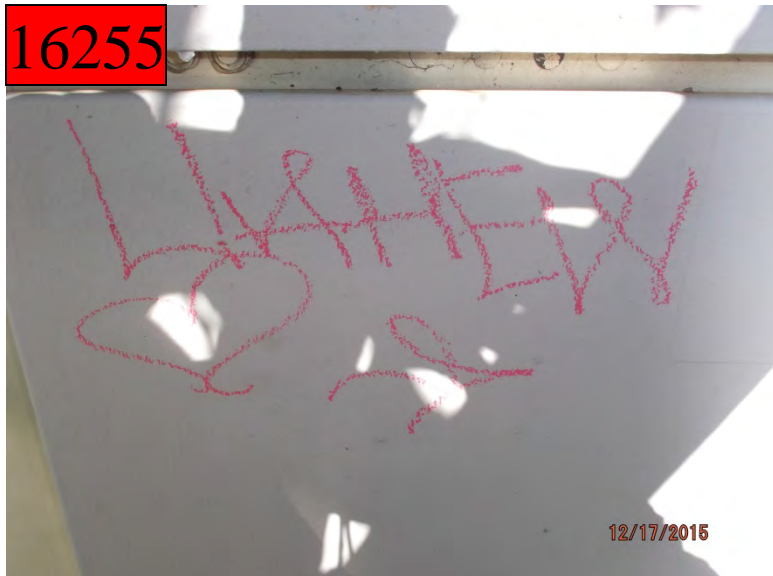


after



before

16255



3700 Hazard

after



before

16256



3500 McDuffie

after



before

16257



4200 Hazard

after



before

16258



4200 Hazard

after



4200 McDuffie

before

16259



after



4200 McDuffie

before

16260



after



3700 Mandell

before

16261



after



1900 Welch

before

16262



after



before

16263

2000 Grant

after



before

16264

2000 Grant

after



1900 Vermont

before

16265



after



Dumpsters

1627 Westheimer

before

16266



after



1627 Westheimer

before

16267



after



before

16268



2006 Huldý

after



before

16269



2006 Huldý

after



Improvement District # 6

Graffiti Abatement

Before and After Pictures

December 21, 2015

Private Property

1301 W Alabama

before

16270



after



1301 W Alabama

before

16271



after



1301 W Alabama

before

16272



after



322 Westheimer

before

16273



after



322 Westheimer

before

16274



after



322 Westheimer

before

16275



after



322 Westheimer

before

16276



after



322 Westheimer

before

16277



after



before

16278

403 Westheimer

after

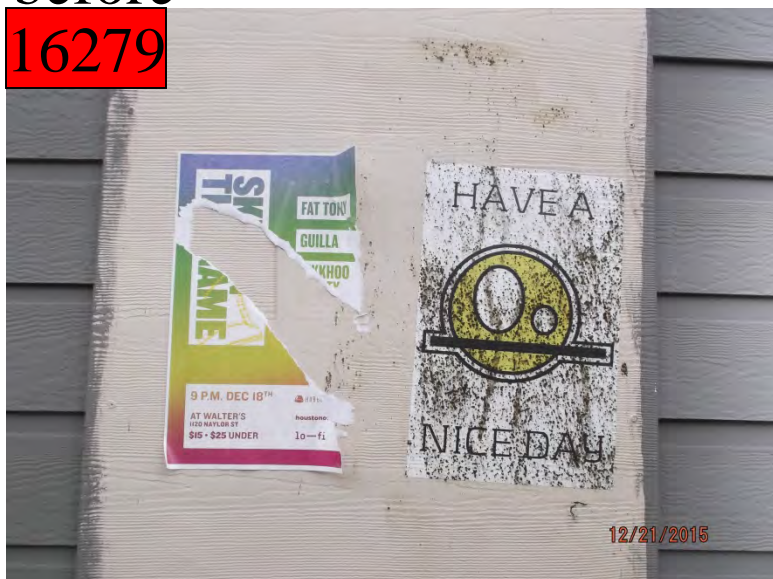


before

16279

403 Westheimer

after



before

16280

403 Westheimer

after



before

16281

403 Westheimer

after

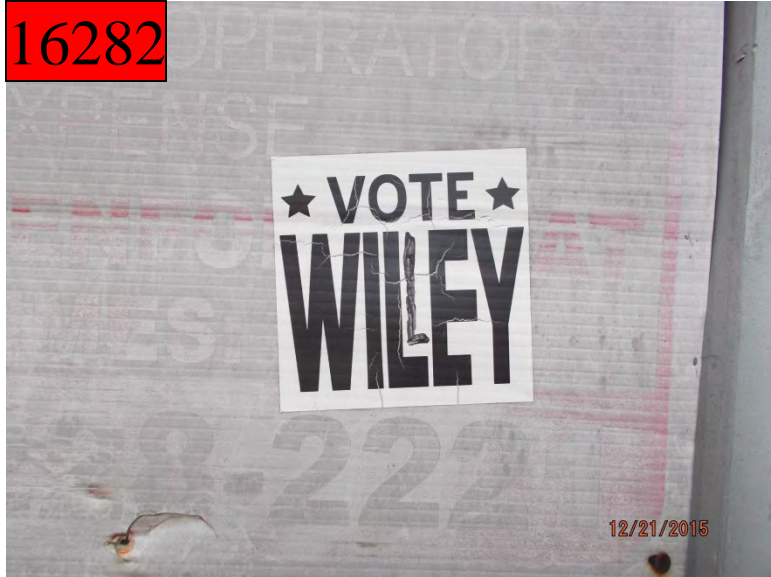


before

16282

300 Westheimer

after



Public Property

before

16283

4800 Hazard

after



before

16284

4800 Hazard

after



before

16285

4800 Hazard

after



before

16286

4800 Hazard

after



before

16287

2000 Banks

after



before

16288

2400 Woodhead

after



before

16289



3500 S Shepherd

after



before

16290



3500 S Shepherd

after



before

16291

3500 S Shepherd

after



before

16292

3500 S Shepherd

after



3500 S Shepherd

before

16293



after



3500 S Shepherd

before

16294



after



before

16295

3500 S Shepherd

after



before

16296

3500 S Shepherd

after



2300 Dunlavy

before

16297



after



4500 Mandell

before

16298



after



4400 Mandell

before

16299



after



4400 Mandell

before

16300



after



4400 Mandell

before

16301



after



2000 Montrose

before

16302



after

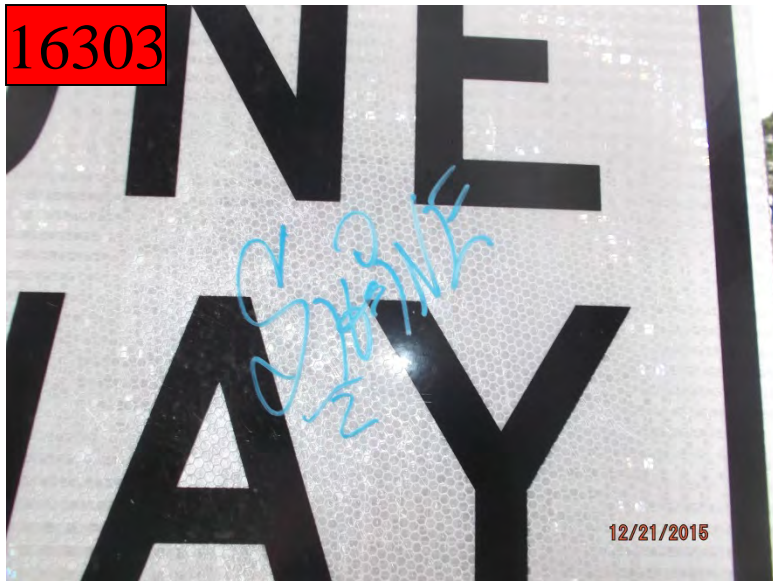


before

16303

1900 Commonwealth

after

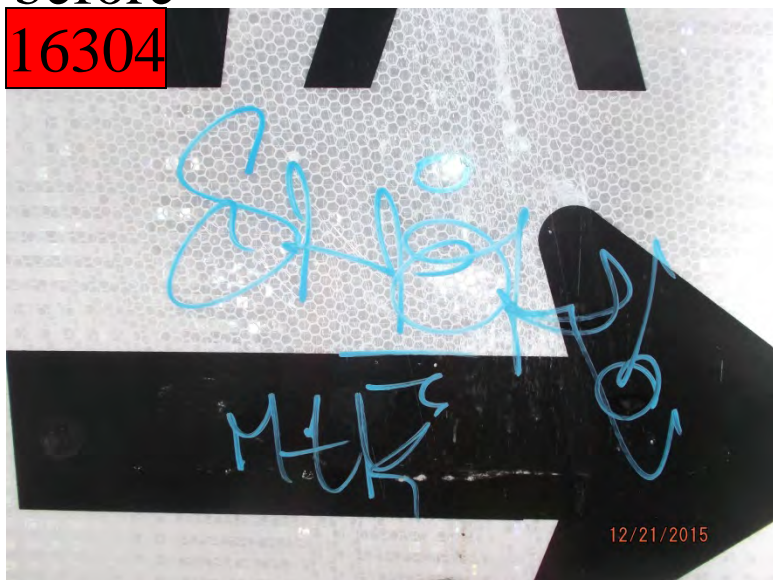


before

16304

1900 Commonwealth

after



before

3300 Montrose

after

16305



before

3300 Montrose

after

16306



before

16307

3300 Montrose

after

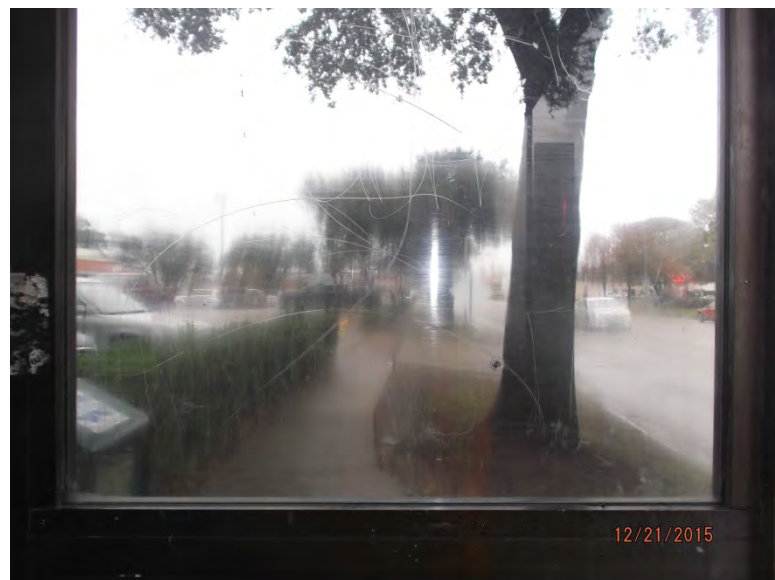


before

16308

3300 Montrose

after



before
16309

3300 Montrose

after



before
16310

3200 S Shepherd

after



before

16311



1000 Peden

after



before

16312



1000 Peden

after



before

16313

3300 Taft

after



before

16314

3300 Taft

after

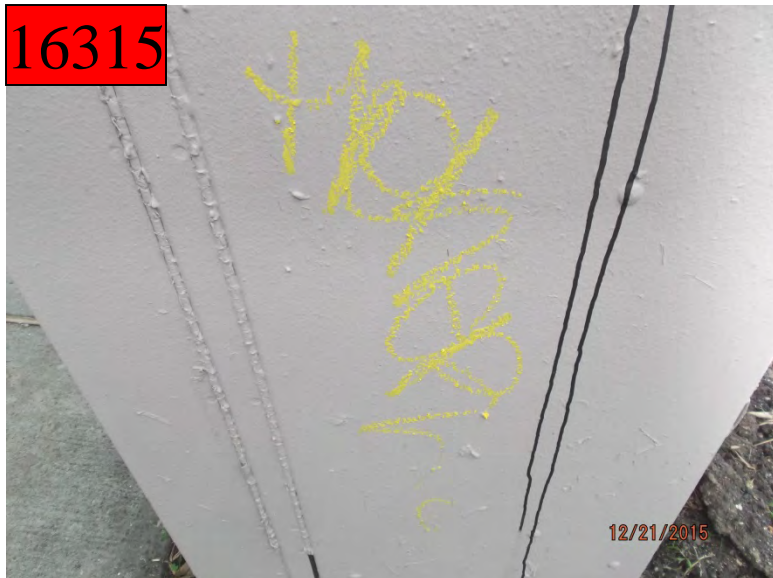


before

16315

3300 Taft

after

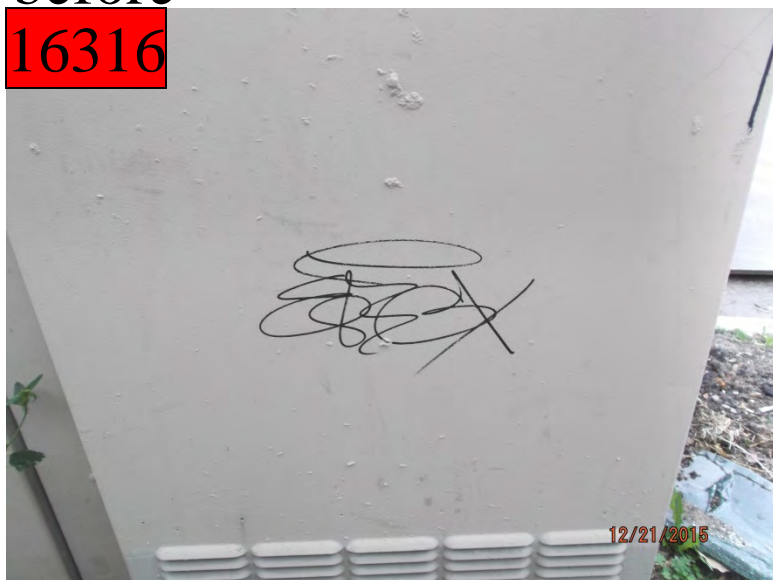


before

16316

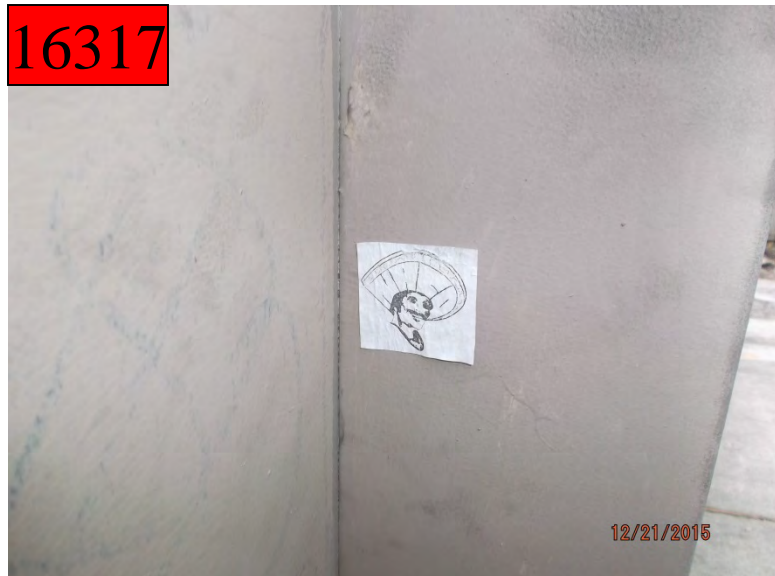
3300 Taft

after



before

16317



3300 Taft

after



before

16318



1200 Westheimer

after



1200 Westheimer

before

16319



after



1200 Westheimer

before

16320



after



before

16321

3300 Graustark

after

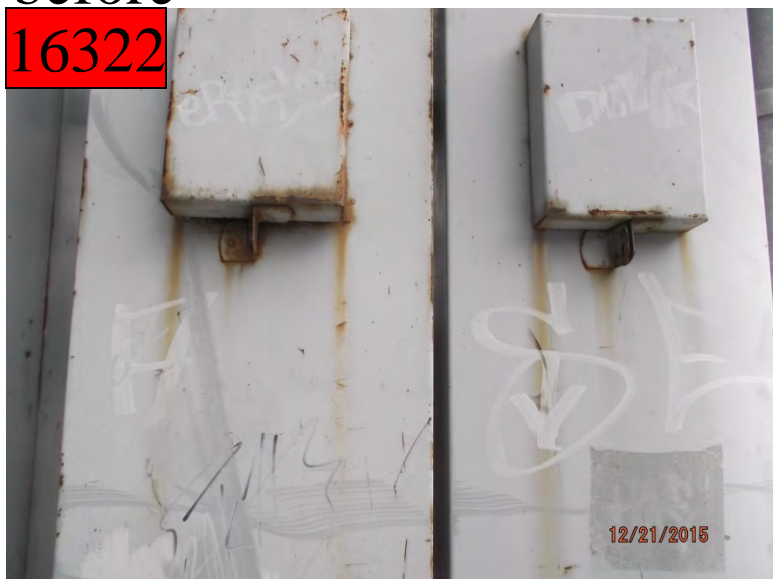


before

16322

3300 Graustark

after



3300 Graustark

before

16323



after



Dumpsters

1629 Westheimer

before

16324



after



Improvement District # 6

Graffiti Abatement

Before and After Pictures

December 28, 2015

Private Property

before

16325



1800 Harold

after



before

16326



1400 W Alabama

after



before

16327



300 W Gray

after



before

16328



300 W Gray

after



before

16329

300 W Gray

after



before

16330

300 W Gray

after



before

16331

300 W Gray

after



Public Property

before

16332



2200 Grant

after



before

16333



300 Pacific

after



1000 Fairview

before

16334



after



1000 Fairview

before

16335



after



1300 Westheimer

before

16336



after



1300 Westheimer

before

16337



after



2700 Woodhead

before

16338



after



2600 Hazard

before

16339



after



500 W Alabama

before

16340



after



4600 Dunlavy

before

16341



after



700 W Alabama

before

16342



after



700 W Alabama

before

16343



after



4600 Dunlavy

before

16344



after



4600 Dunlavy

before

16345



after



before

16346

2500 Commonwealth

after



before

16347

1300 Peden

after



1700 Fairview

before

16348



after



Dumpsters

1400 Hawthorne

before

16349



after



1400 Hawthorne

before

16350



after



before

16351

1400 Hawthorne

after



before

16352

1400 Hawthorne

after



before

16353



1400 Hawthorne

after



Improvement District # 6

Graffiti Abatement

Before and After Pictures

December 30, 2015

Private Property

1639 Westheimer

before

16354



after



1639 Westheimer

before

16355



after



1800 Richmond

before

16356



after



Public Property

before

16357

2600 Hazard

after



before

16358

3300 Montrose

after



1800 Westheimer

before

16359



after



1800 Westheimer

before

16360



after



2500 S Shepherd

before

16361



after



2500 S Shepherd

before

16362



after



4900 Montrose

before

16363



after



3400 Roseland

before

16364



after



before

3400 Roseland

after

16365



before

3400 Roseland

after

16366



3400 Roseland

before

16367



after



3400 Roseland

before

16368



after



before

16369

4200 Hazard

after



before

16370

4300 Hazard

after



3700 Mandell

before

16371



after



2100 Huldy

before

16372



after



2300 Woodhead

before

16373



after



1900 Fairview

before

16374



after



2400 Windsor

before

16375



after



2500 Whitney

before

16376



after



before

16377



2400 Yupon

after



before

16378



2400 Yupon

after



before

16379

2400 Grant

after



before

16380

2700 Taft

after



before

16381

2700 Taft

after



before

16382

2700 Taft

after



Dumpsters

1629 Westheimer

before

16383



after



1629 Westheimer

before

16384



after



1629 Westheimer

before

16385



after

