

# Montrose District



**Graffiti Abatement Reports**

---

**October 2015**

# Montrose District

## Monthly Graffiti Abatement Reports 2015

Abated	Jan	Feb	Mar	Apr	May	June	July	Aug	Sept	Oct	Nov	Dec	2015 Total
Business Property	60	51	75	67	41	75	57	55	86	105			672
Public Property	190	195	213	225	164	169	204	199	184	203			1946
Trash Dumpsters	6	6	8	9	11	8	11	7	8	19			93
<b>Total:</b>	<b>256</b>	<b>252</b>	<b>296</b>	<b>301</b>	<b>216</b>	<b>252</b>	<b>272</b>	<b>261</b>	<b>278</b>	<b>327</b>			<b>2711</b>

Graffiti Abatement Reports Totals 2008 - 2015									
	2008	2009	2010	2011	2012	2013	2014	2015	Totals
<b>Abated</b>									
Business Property	184	98	144	563	522	467	747	672	<b>3,397</b>
Public Property	538	771	935	1,802	1,724	1839	2356	1946	<b>11,911</b>
Trash Dumpsters	28	40	48	59	114	84	82	93	<b>548</b>
<b>Total:</b>	<b>750</b>	<b>909</b>	<b>1,127</b>	<b>2,424</b>	<b>2,360</b>	<b>2,390</b>	<b>3,185</b>	<b>2,711</b>	<b>15,856</b>



# Improvement District # 6

Graffiti Abatement

**Before and After Pictures**

**October 5, 2015**

# Private Property

before

## 416 Westheimer

after

15530



before

## 1201 Westheimer

after

15531



## 1201 Westheimer

before

15532



after



## 1201 Westheimer

before

15533



after





## 1225 Westheimer

before

15534



after



## 1225 Westheimer

before

15535



after





## 1225 Westheimer

before

15536



after



## 1539 Westheimer

before

15537



after





## 1539 Westheimer

before

15538



after



## 1539 Westheimer

before

15539



after





# 1539 Westheimer

before

15540



after



# 1539 Westheimer

before

15541



after





## 1539 Westheimer

before

15542



after



## 1539 Westheimer

before

15543



after





## 1539 Westheimer

before

15544



after



## 1539 Westheimer

before

15545



after





# 1609 Westheimer

before

15546



after



# 1609 Westheimer

before

15547



after





## 1609 Westheimer

before

15548



after



## 1609 Westheimer

before

15549



after





# 1609 Westheimer

before

15550



after



# 1609 Westheimer

before

15551



after



# 1609 Westheimer

before

15552



after



# Public Property



900 Westheimer

before  
15553

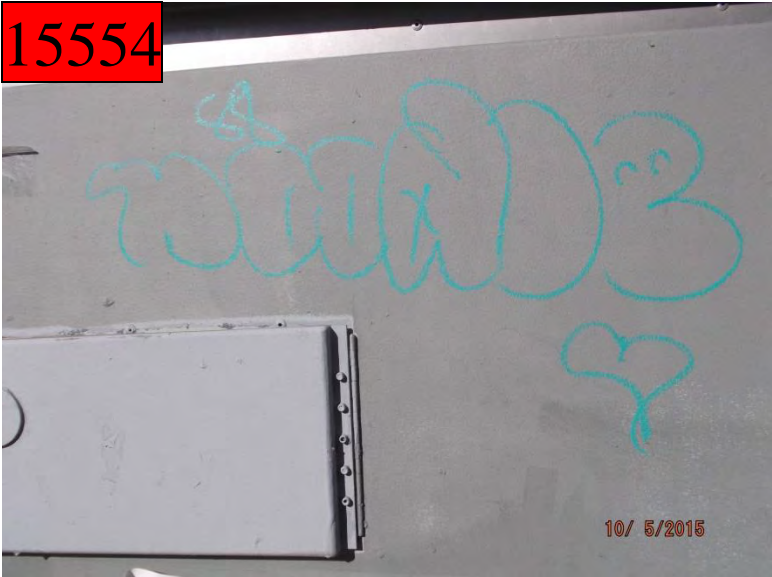


after



900 Westheimer

before  
15554



after



before

15555

## 900 Westheimer

after



before

15556

## 2400 Montrose

after





## 2400 Montrose

before

15557



after



## 2400 Montrose

before

15558



after





# 1000 Westheimer

before

15559



after



# 1000 Westheimer

before

15560



after



# 1000 Westheimer

before

15561



after



# 1000 Westheimer

before

15562



after





# 1000 Westheimer

before

15563



after



# 1000 Westheimer

before

15564



after





## 1000 Westheimer

before

15565



after



## 1200 Westheimer

before

15566



after





# 1200 Westheimer

before

15567



after



# 1200 Westheimer

before

15568



after





## 1200 Westheimer

before

15569



after



## 1400 Westheimer

before

15570



after





## 1400 Westheimer

before

15571



after



## 1500 Westheimer

before

15572



after





## 1500 Westheimer

before

15573



after



## 1500 Westheimer

before

15574



after





# 1500 Westheimer

before

15575



after



# 1500 Westheimer

before

15576



after



# 1500 Westheimer

before

15577



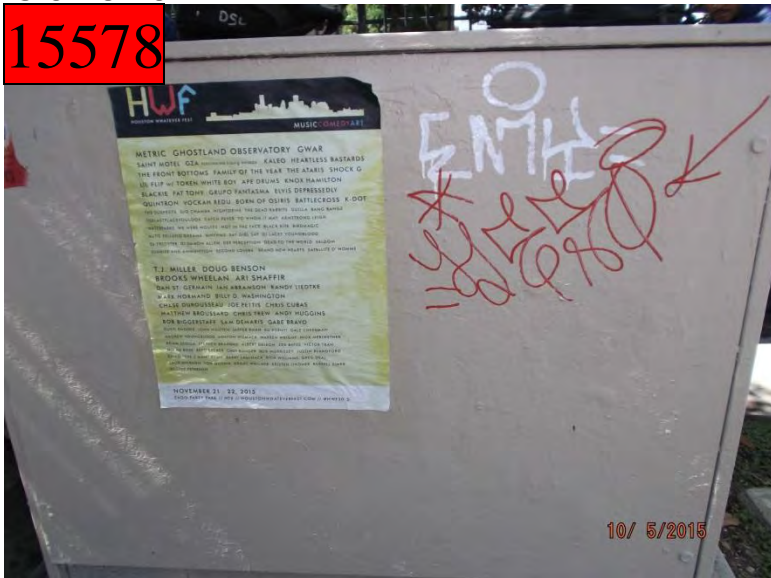
after



# 1600 Westheimer

before

15578



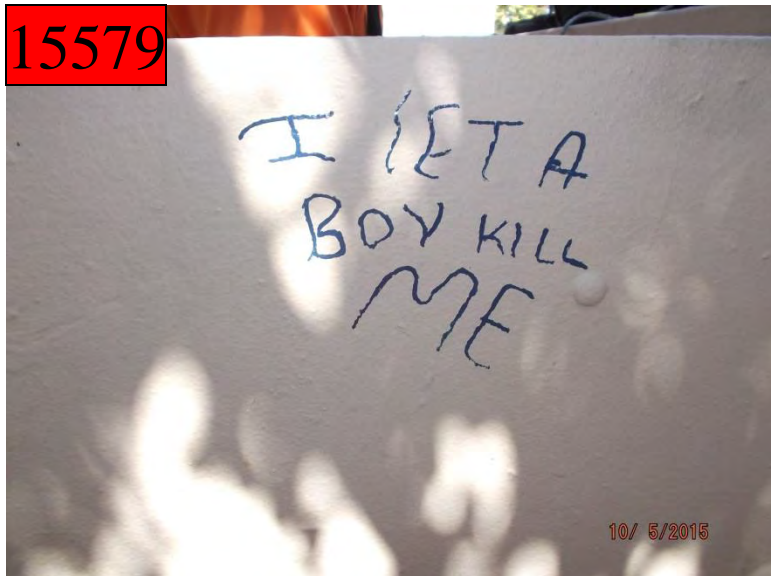
after





15579

after



15580

after



# Improvement District # 6

Graffiti Abatement

**Before and After Pictures**

**October 8, 2015**



# Private Property

## 1214 Westheimer

before

15581



after



## 1214 Westheimer

before

15582



after





## 1322 Westheimer

before

15583



after



## 1322 Westheimer

before

15584



after





## 1322 Westheimer

before

15585



after



## 1322 Westheimer

before

15586



after





## 1322 Westheimer

before

15587



after



## 1322 Westheimer

before

15588



after



## 1322 Westheimer

before

15589



after



## 1322 Westheimer

before

15590



after





# 1403 Westheimer

before

15591



after



# 1403 Westheimer

before

15592



after





# 1627 Westheimer

before

15593



after



# 1627 Westheimer

before

15594



after





## 1627 Westheimer

before

15595



after



## 1627 Westheimer

before

15596



after



before

15597



1641 Westheimer

after



before

15598



1525 Westheimer

after





before

15599

# 1110 Lovett

after



# Public Property



before

15600

## 1400 Westheimer

after



before

15601

## 1400 Westheimer

after



# 1600 Westheimer

before

15602



after



# 1600 Westheimer

before

15603



after





# 1700 Westheimer

before

15604



after



# 1700 Westheimer

before

15605



after





## 1600 Westheimer

before

15606



after



## 1600 Westheimer

before

15607



after





## 1600 Westheimer

before

15608



after



## 1600 Westheimer

before

15609



after



## 1600 Westheimer

before

15610



after



## 1600 Westheimer

before

15611



after





## 1600 Westheimer

before

15612



after



## 1600 Westheimer

before

15613



after



# 1600 Westheimer

before

15614



after



# 1600 Westheimer

before

15615



after





# 1600 Westheimer

before  
15616



after



# 1600 Westheimer

before  
15617



after



# 1600 Westheimer

before  
15618



after



# 1600 Westheimer

before  
15619



after





# 1600 Westheimer

before  
15620



after



# 1700 Westheimer

before  
15621



after





# 1700 Westheimer

before

15622



after



# 1700 Westheimer

before

15623



after





# 1700 Westheimer

before

15624



after



# 1700 Westheimer

before

15625



after





before

15626

2300 Montrose

after



before

15627

2300 Montrose

after





before

15628

2200 Montrose

after



before

15629

2200 Montrose

after





## 1700 Westheimer

before

15630



after



## 2700 Lincoln

before

15631



after





before

15632

2700 Lincoln

after

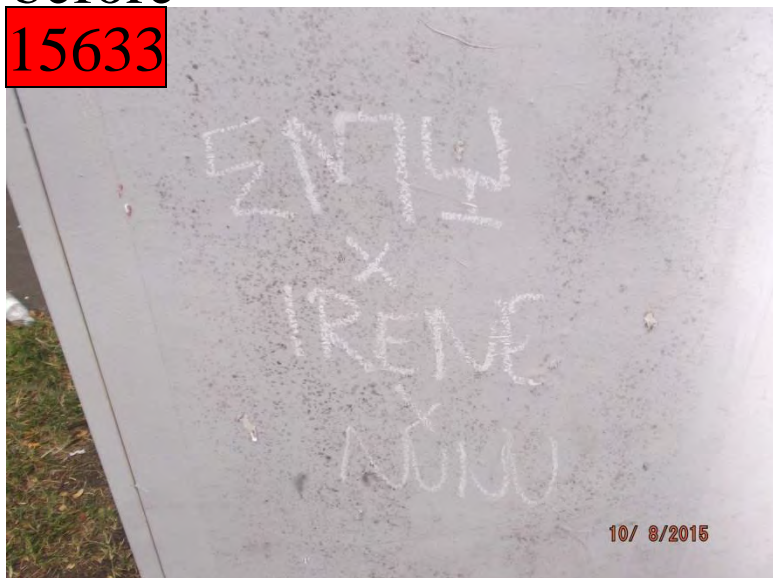


before

15633

2700 Lincoln

after



# Improvement District # 6

Graffiti Abatement

**Before and After Pictures**

**October 12, 2015**



# Private Property

## 1214 Westheimer

before

15634



after



## 1322 Westheimer

before

15635



after





# 1300 Westheimer

before

15636



after



# 1300 Westheimer

before

15637



after





# 1300 Westheimer

before

15638



after



# 1300 Westheimer

before

15639



after





# 1300 Westheimer

before

15640



after



# 1413 Westheimer

before

15641



after





# 1413 Westheimer

before

15642



after



# 1413 Westheimer

before

15643



after





## 1413 Westheimer

before

15644



after



## 1400 Westheimer

before

15645



after





# 1641 Westheimer

before

15646



after



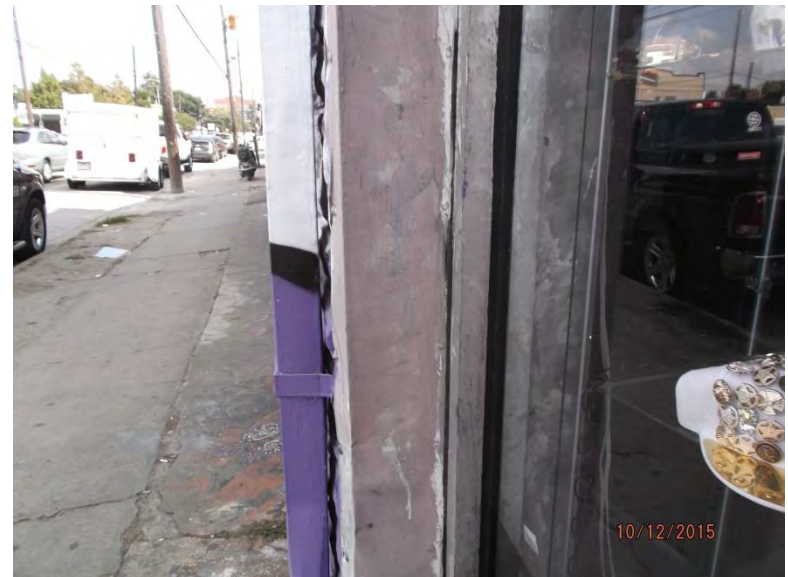
# 1641 Westheimer

before

15647



after





## 1641 Westheimer

before

15648



after



## 1641 Westheimer

before

15649



after





## 1600 Westheimer

before

15650



after



## 401 Westheimer

before

15651



after





before

15652

## 401 Westheimer

after



before

15653

## 401 Westheimer

after



before

## 401 Westheimer

after

15654



before

## 401 Westheimer

after

15655





## 1600 Westheimer

before

15656



after



## 1600 Westheimer

before

15657



after



## 1801 Richmond

before

15658



after



## 1801 Richmond

before

15659



after





## 1801 Richmond

before

15660



after



## 1801 Richmond

before

15661



after



## 1801 Richmond

before

15662



after



## 1801 Richmond

before

15663



after





# 1500 Westheimer

before

15664



after



# Public Property



## 1300 Westheimer

before

15665



after



## 1300 Westheimer

before

15666



after





## 1200 Westheimer

before

15667



after



## 1300 Westheimer

before

15668



after





# 1500 Westheimer

before

15669



after



# 1500 Westheimer

before

15670



after





## 1600 Westheimer

before

15671



after



## 1600 Westheimer

before

15672



after





## 1600 Westheimer

before

15673



after



## 1600 Westheimer

before

15674



after



# Dumpsters



# 1600 Westheimer

before

15675



after



# 1600 Westheimer

before

15676



after



# 1600 Westheimer

before

15677



after





# Improvement District # 6

Graffiti Abatement

**Before and After Pictures**

**October 15, 2015**

# Private Property



## 1600 Westheimer

before

15678



after



## 700 Richmond

before

15679



after



# Public Property



before

2000 Montrose

after

15680



before

2000 Montrose

after

15681



before

## 2000 Montrose

after

15682



before

## 2000 Montrose

after

15683





## 2000 Montrose

before

15684



after



## 1700 Montrose

before

15685



after



before

1700 Montrose

after

15686



before

1700 Montrose

after

15687





before  
15688

## 1700 Montrose

after



before  
15689

## 1700 Montrose

after





before

1700 Montrose

after

15690



before

1700 Montrose

after

15691





before

1700 Montrose

after

15692

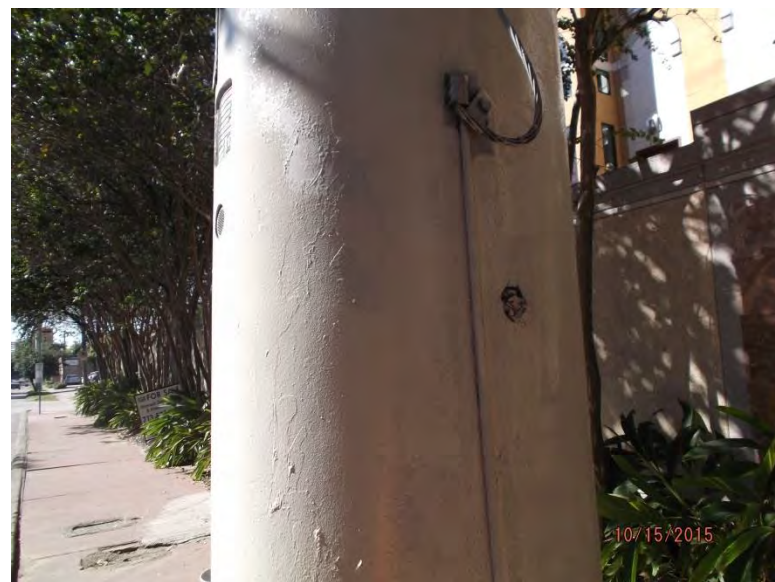


before

1700 Montrose

after

15693





before

1700 Montrose

after

15694



before

1700 Montrose

after

15695





## 2600 Montrose

before

15696



after



## 2600 Montrose

before

15697



after





## 1600 Westheimer

before

15698



after



## 700 Richmond

before

15699



after



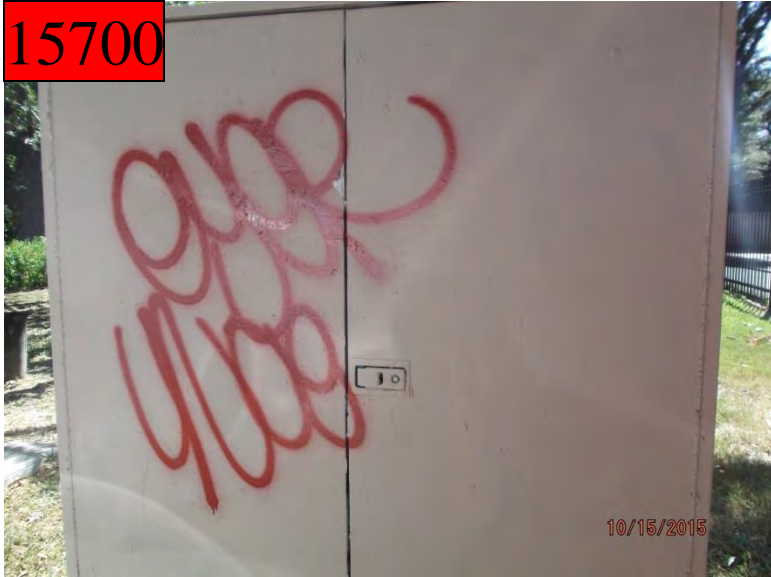


before

15700

## 1100 Banks

after



before

15701

## 3100 S Shepherd

after



## 3100 S Shepherd

before

15702



after



## 3100 S Shepherd

before

15703



after





before

3000 S Shepherd

after

15704



before

3000 S Shepherd

after

15705





before

15706



3000 S Shepherd

after



before

15707



3000 S Shepherd

after





# Improvement District # 6

Graffiti Abatement

**Before and After Pictures**

**October 19, 2015**

# Private Property



## 1600 Westheimer

before

15708



after



## 4300 Montrose

before

15709



after



# Public Property



## 500 W Alabama

before

15710



after



## 500 W Alabama

before

15711



after





## 400 Hawthorne

before

15712



after



## 400 Hawthorne

before

15713



after





before

15714



4000 Jack

after



before

15715



3500 Flora

after





before

15716



3700 Flora

after



before

15717



3700 Flora

after





## 3300 Dunlavy

before

15718



after



## 3300 Dunlavy

before

15719



after



# 1600 Westheimer

before

15720



after



# 1600 Westheimer

before

15721



after





# 1600 Westheimer

before

15722



after



# 1600 Westheimer

before

15723



after



before

15724



## 1600 Westheimer

after



before

15725



## 1600 Westheimer

after





# 1600 Westheimer

before

15726



after



# 1600 Westheimer

before

15727



after



## 900 Richmond

before

15728



after



## 4300 Kyle

before

15729



after





before

15730

## 4300 Montrose

after



before

15731

## 4300 Montrose

after





before

900 Richmond

after

15732



before

900 Richmond

after

15733





before

## 900 Richmond

after

15734



before

## 1500 Richmond

after

15735





## 1900 Richmond

before

15736



after



## 1900 Richmond

before

15737



after





## 1900 Richmond

before

15738



after



## 1600 California

before

15739



after





# 1600 Westheimer

before

15740



after



# 1600 Westheimer

before

15741



after





## 1500 Westheimer

before

15742



after



## 1500 Westheimer

before

15743



after





## 1500 Westheimer

before

15744



after



## 2100 Dunlavy

before

15745



after





## 2100 Dunlavy

before

15746



after



## 2200 Dunlavy

before

15747



after



## 2200 Dunlavy

before

15748



after





# Dumpsters

# 1600 Westheimer

before

15749



after





# Improvement District # 6

Graffiti Abatement

**Before and After Pictures**

**October 23, 2015**

# Private Property



## 1417 Westheimer

before

15750



after



## 1417 Westheimer

before

15751



after



## 1417 Westheimer

before

15752



after



## 1417 Westheimer

before

15753



after





## 1417 Westheimer

before

15754



after



## 1417 Westheimer

before

15755



after





## 1417 Westheimer

before

15756



after



## 1417 Westheimer

before

15757



after





## 1417 Westheimer

before

15758



after



## 1537 W Alabama

before

15759



after





## 2003 W Alabama

before

15760



after



## 2003 W Alabama

before

15761



after





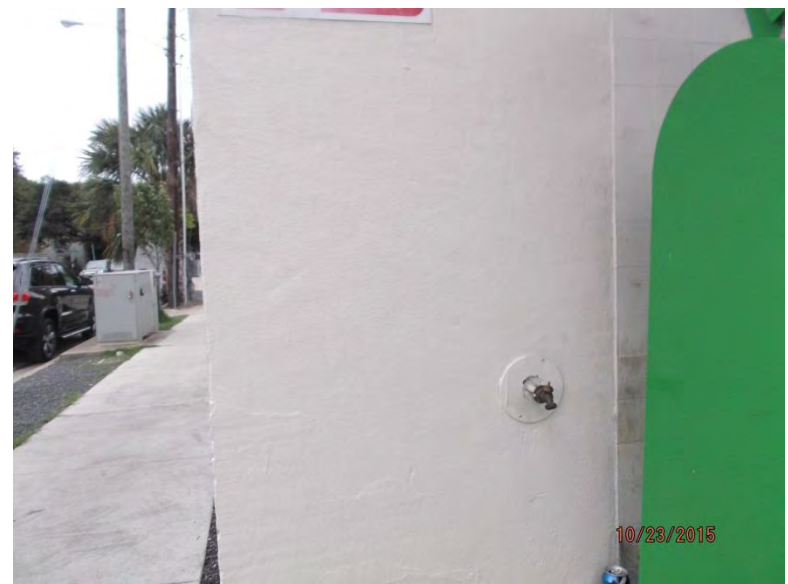
2003 W Alabama

before

15762



after



# Public Property



before

15763



## 1600 W Alabama

after



before

15764



## 1600 W Alabama

after



## 1600 W Alabama

before

15765



after



## 3400 Mandell

before

15766



after





## 3900 Mc Duffie

before

15767



after



## 3900 Mc Duffie

before

15768



after





## 3900 Mc Duffie

before

15769



after



## 3900 Mc Duffie

before

15770



after





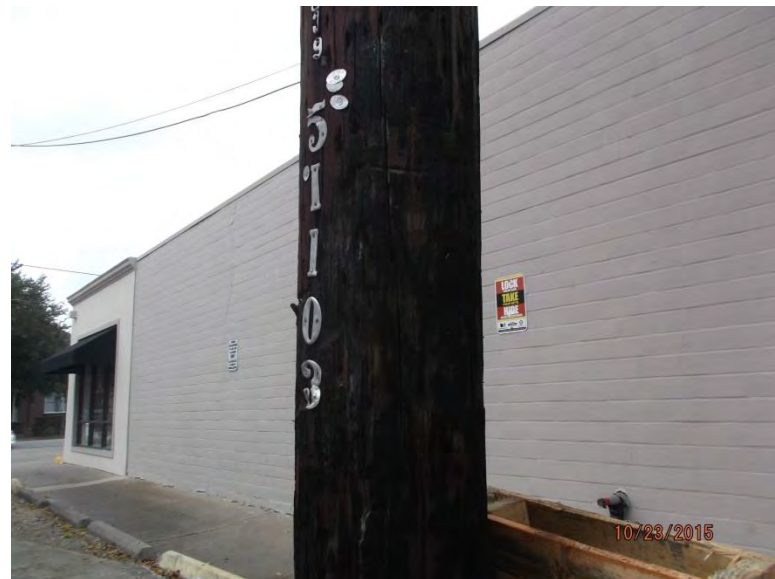
before

15771



3800 Driscoll

after



before

15772



3800 Driscoll

after





before

15773

## 3300 Yupon

after



before

15774

## 3300 Yupon

after





# 3800 Mc Duffie

before

15775



after



# Dumpsters



# 1417 Westheimer

before

15776



after



# 1417 Westheimer

before

15777



after



## 1417 Westheimer

before

15778



after



## 1417 Westheimer

before

15779



after





15780

after



15781

after





## 1600 Westheimer

before

15782



after



## 1600 Westheimer

before

15783



after





# Improvement District # 6

Graffiti Abatement

**Before and After Pictures**

**October 26, 2015**

# Private Property



## 2105 Dunlavy

before

15784



after



## 2105 Dunlavy

before

15785



after



# Public Property



## 1200 Richmond

before

15786



after



## 1200 Richmond

before

15787



after





## 1400 Richmond

before

15788



after



## 1400 Richmond

before

15789



after





## 1400 Richmond

before

15790



after



## 3700 Woodhead

before

15791



after



before

15792



1800 W Alabama

after



before

15793



1800 W Alabama

after





## 1800 W Alabama

before

15794



after



## 1800 W Alabama

before

15795



after



before

15796

## 2000 Welch

after



before

15797

## 1800 Dunlavy

after





## 2100 Dunlavy

before

15798



after



## 2100 Dunlavy

before

15799



after



## 2100 Dunlavy

before

15800



after



## 3500 Dunlavy

before

15801



after





## 1700 Westheimer

before

15802



after



## 1700 Westheimer

before

15803



after



# 1700 Westheimer

before

15804



after



# 4300 Dunlavy

before

15805



after





## 4300 Dunlavy

before

15806



after



## 4300 Dunlavy

before

15807



after



before  
15808

2300 Grant

after



before  
15809

1400 Westheimer

after





before

15810

2400 Yupon

after



before

15811

2400 Yupon

after



## 2000 Richmond

before

15812



after



## 2000 Richmond

before

15813



after





before

15814

## 5100 Bayard

after



before

15815

## 4800 Montrose

after





before

15816

900 Barkdull

after



before

15817

900 Barkdull

after





# 4900 Montrose

before

15818



after



# Improvement District # 6

Graffiti Abatement

**Before and After Pictures**

**October 29, 2015**



# Private Property

## 1637 Westheimer

before

15819



after



## 1639 Westheimer

before

15820



after





## 4208 Woodhead

before

15821



after



## 7208 Woodhead

before

15822



after



## 120 Westheimer

before

15823



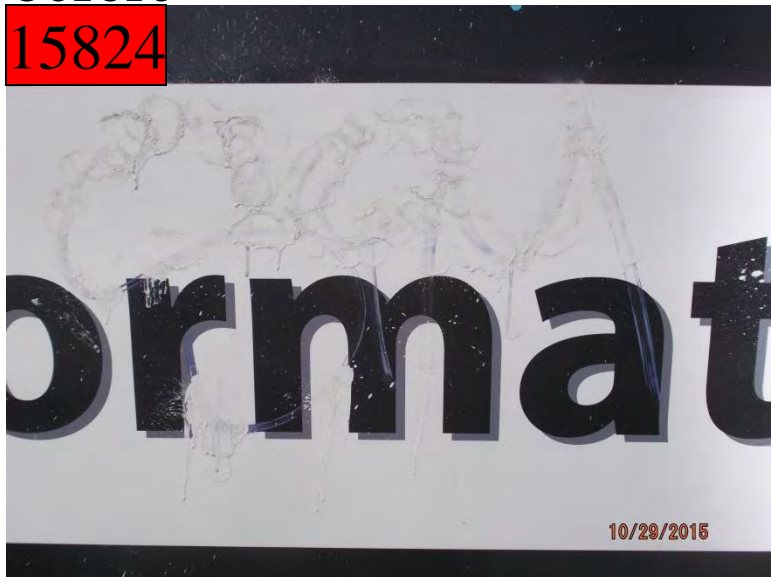
after



## 120 Westheimer

before

15824



after

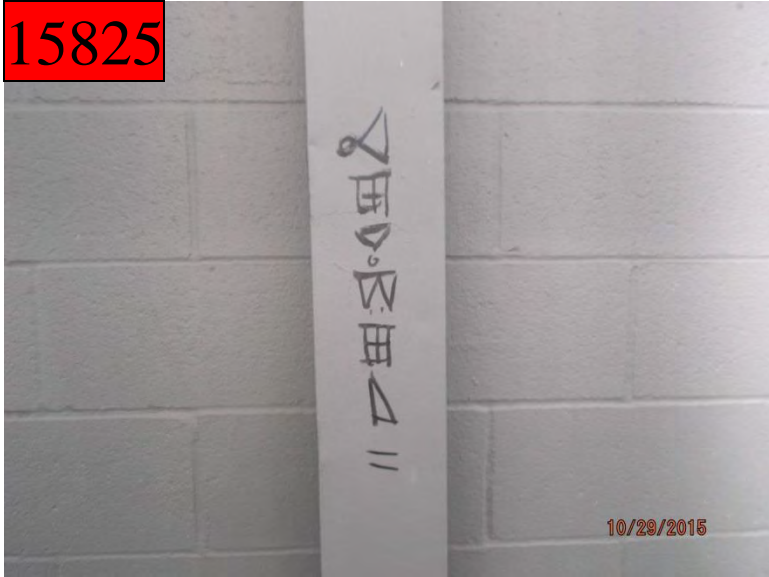




## 300 Westheimer

before

15825



after



## 300 Westheimer

before

15826



after



before

15827

## 300 Westheimer

after

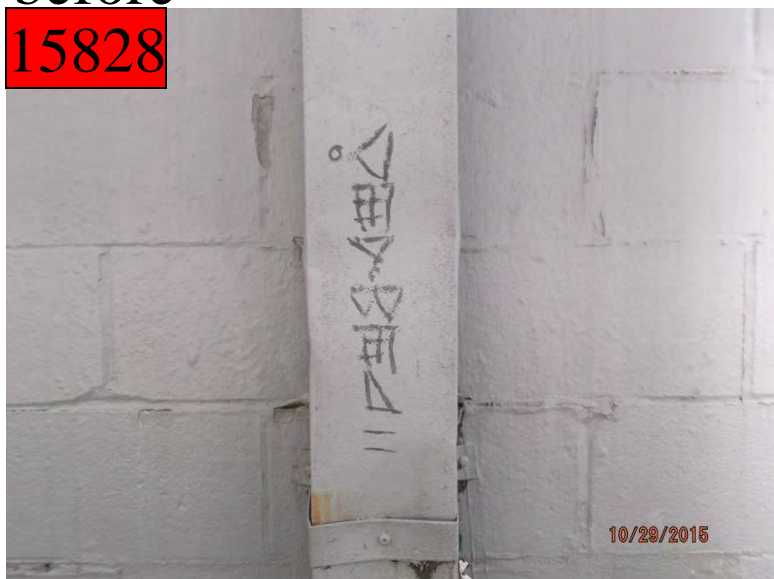


before

15828

## 300 Westheimer

after





## 300 Westheimer

before

15829



after



## 300 Westheimer

before

15830



after



# 2518 Mandell

before

15831



after





# Public Property

## 1637 Westheimer

before

15832



after



## 1637 Westheimer

before

15833



after





## 3500 W Dallas

before

15834



after



## 3400 W Dallas

before

15835



after





before

15836



200 Welch

after



before

15837



200 Welch

after





before

15838

## 100 Fairview

after



before

15839

## 100 Fairview

after



## 100 Hyde Park

before

15840



after



## 1500 Westheimer

before

15841



after





before

15842



1400 Welch

after



before

15843



1400 Welch

after



before

15844

## 2000 Yupon

after



before

15845

## 2500 Dunlavy

after

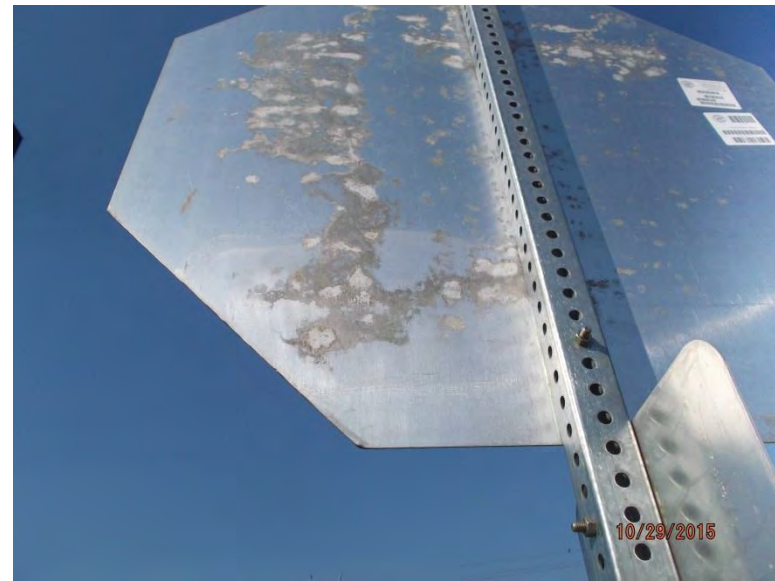




before  
15846

## 200 Westheimer

after



before  
15847

## 200 Westheimer

after



before  
15848

## 400 Westheimer

after



before  
15849

## 400 Westheimer

after





# Dumpsters

# 1637 Westheimer

before

15850



after



# 1637 Westheimer

before

15851



after





## 1637 Westheimer

before

15852



after



## 1618 Westheimer

before

15853



after



## 1618 Westheimer

before

15854



after



## 1618 Westheimer

before

15855



after





# 1618 Westheimer

before

15856



after

