

Montrose District



Graffiti Abatement Reports

August 2015

Montrose District

Monthly Graffiti Abatement Reports 2015

Abated	Jan	Feb	Mar	Apr	May	June	July	Aug	Sept	Oct	Nov	Dec	2015 Total
Business Property	60	51	75	67	41	75	57	55					481
Public Property	190	195	213	225	164	169	204	199					1559
Trash Dumpsters	6	6	8	9	11	8	11	7					66
Total:	256	252	296	301	216	252	272	261					2106

Graffiti Abatement Reports Totals 2008 - 2015									
	2008	2009	2010	2011	2012	2013	2014	2015	Totals
Abated									
Business Property	184	98	144	563	522	467	747	481	3,206
Public Property	538	771	935	1,802	1,724	1839	2356	1559	11,524
Trash Dumpsters	28	40	48	59	114	84	82	66	521
Total:	750	909	1,127	2,424	2,360	2,390	3,185	2,106	15,251

Improvement District # 6

Graffiti Abatement

Before and After Pictures

August 3, 2015

Private Property

1600 Westheimer

before

14991



after



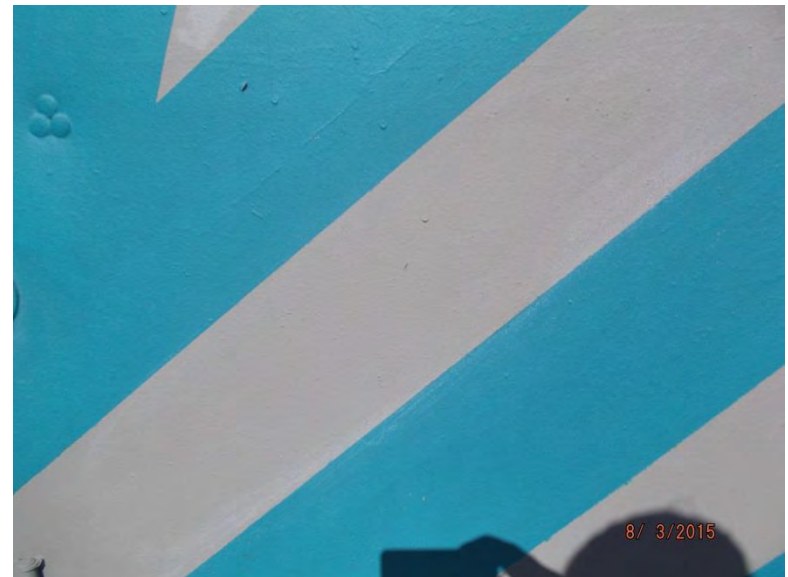
1600 Westheimer

before

14992



after



1100 Richmond

before

14993



after



1100 Richmond

before

14994



after



3500 W Dallas

before

14995



after



3500 W Dallas

before

14996



after



3500 W Dallas

before

14997



after



3500 W Dallas

before

14998



after



Public Property

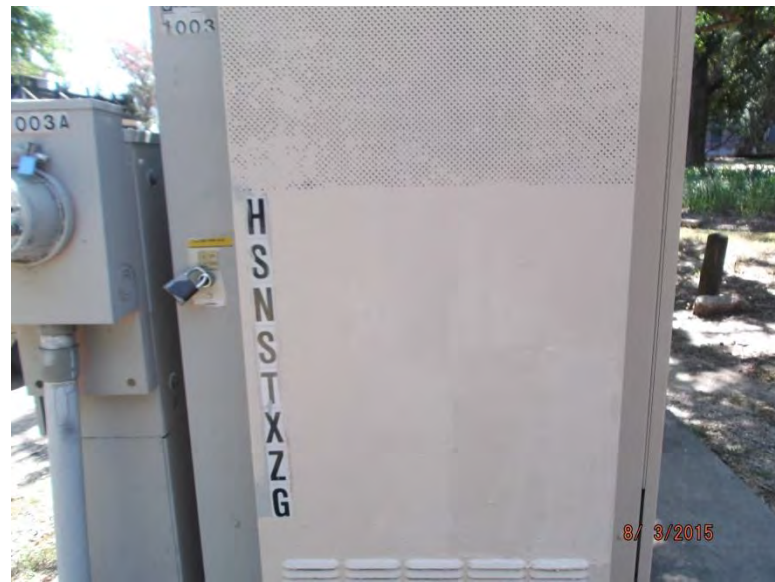
before

14999



1000 Banks

after



before

15000



1000 Banks

after



before

15001



1000 Banks

after



before

15002



1000 Banks

after



before

15003

1000 Banks

after



before

15004

1000 Richmond

after



1000 Richmond

before

15005



after



1000 Richmond

before

15006



after



1000 Richmond

before

15007



after



1100 Richmond

before

15008



after



1100 Richmond

before

15009



after



1100 Richmond

before

15010



after



1100 Richmond

before

15011



after



2000 Richmond

before

15012



after



1200 Westheimer

before

15013



after



1200 Westheimer

before

15014



after



2700 Waughcrest

before

15015



after



2000 Waugh

before

15016



after



before

15017

2000 Waugh

after



before

15018

2000 Waugh

after



before
15019

2000 Waugh

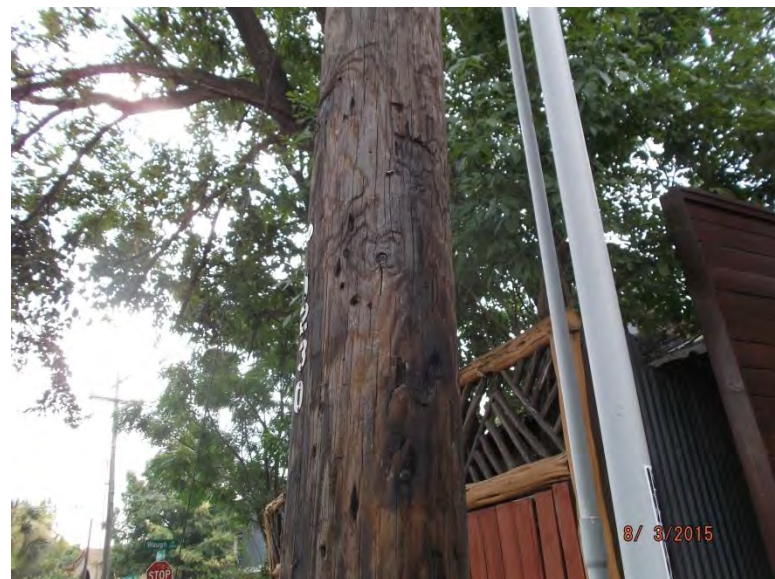
after



before
15020

1300 W Drew

after



Dumpsters

before

15021



2400 Taft

after



before

15022



2400 Taft

after



before

15023

2400 Taft

after



Improvement District # 6

Graffiti Abatement

Before and After Pictures

August 6, 2015

Private Property

1614 Westheimer

before

15024



after



1614 Westheimer

before

15025



after



before

15026



1246 W Gray

after



before

15027



1246 W Gray

after



before

15028



1246 W Gray

after



before

15029



1246 W Gray

after



before

15030



1246 W Gray

after



before

15031



1246 W Gray

after



401 Westheimer

before

15032



after



401 Westheimer

before

15033



after



Public Property

before

15034



3903 Bute

after



before

15035



3903 Bute

after



before

15036

3903 Bute

after



before

15037

3903 Bute

after



before

15038



3900 Greeley

after



before

15039



600 Branard

after



3500 Montrose

before

15040



after



900 Kipling

before

15041



after



2700 Yoakum

before

15042



after



1100 California

before

15043



after



before

15044

1000 Clay

after



before

15045

2200 Dallas

after



before

15046

300 W Gray

after



before

15047

500 Drew

after



2500 Whitney

before

15048



after



300 Westheimer

before

15049



after



2600 Crocker

before

15050



after



700 Avondale

before

15051



after



before

15052



400 Lovett

after



before

15053



400 Lovett

after



before

15054

400 Lovett

after



before

15055

200 Westmoreland

after



1200 Jackson

before

15056



after



Dumpsters

before

15057

1400 Hawthorne

after



Improvement District # 6

Graffiti Abatement

Before and After Pictures

August 10, 2015

Private Property

1637 Westheimer

before

15058



after



1637 Westheimer

before

15059



after



1639 Westheimer

before

15060



after



1639 Westheimer

before

15061



after



before

15062

502 Alabama

after



before

15063

502 Alabama

after



before

15064



401 W Gray

after



before

15065



3321 Stanford

after



Public Property

before

15066

500 Alabama

after



before

15067

3900 Mandell

after



1600 Alabama

before

15068



after



1600 Alabama

before

15069



after



1600 Richmond

before

15070



after



3800 McDuffie

before

15071



after



before

15072

3800 McDuffie

after

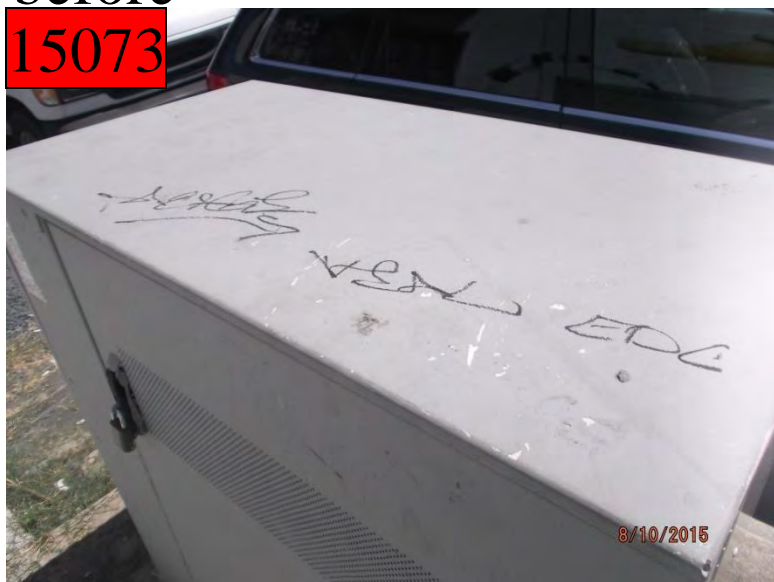


before

15073

3800 McDuffie

after



before

15074



3700 Hazard

after



before

15075



2600 Hazard

after



before

15076

3300 Taft

after



before

15077

3300 Taft

after



700 Hawthorne

before

15078



after



800 Lovett

before

15079



after



1600 Fairview

before

15080



after



1700 Commonwealth

before

15081



after



2300 Van Buren

before

15082



after



Dumpsters

before

15083

1701 Commonwealth

after



Improvement District # 6

Graffiti Abatement

Before and After Pictures

August 13, 2015

Private Property

before

15084



502 Alabama

after



before

15085



3310 Taft

after



before

15086



900 Dunlavy

after



before

15087



1704 Stanford

after



before

15088

417 Westheimer

after



before

15089

4704 Montrose

after



4710 Montrose

before

15090



after



4710 Montrose

before

15091



after



before

15092

3900 McDuffie

after



before

15093

3900 McDuffie

after



Public Property

before

15094

502 Alabama

after



before

15095

502 Alabama

after



before

15096

3300 Taft

after



before

15097

600 Hawthorne

after



before

15098



1900 W Gray

after



before

15099



3500 W Dallas

after



1300 Woodhead

before

15100



after



1300 Woodhead

before

15101



after



1300 Woodhead

before

15102



after



1000 Waugh

before

15103



after



before

15104



600 Pacific

after



before

15105



2500 Stanford

after



1400 Richmond

before

15106



after



4700 Montrose

before

15107



after



before
15108

4200 Hazard

after



Dumpsters

before

15109

4007 Hazard

after



Improvement District # 6

Graffiti Abatement

Before and After Pictures

August 17, 2015

Private Property

before

15110

600 W Gray

after



before

15111

702 W Gray

after



Public Property

before

15112

700 W Gray

after



before

15113

700 W Gray

after



1000 W Dallas

before

15114



after



1200 Waugh

before

15115



after



1600 Hawthorne

before

15116



after



2000 Dunlavy

before

15117



after



1600 Westheimer

before

15118



after



1600 Westheimer

before

15119



after



2500 Dunlavy

before

15120



after



2500 Dunlavy

before

15121



after



1600 Westhiemer

before

15122



after



3600 Mandell

before

15123



after



1400 Hawthorne

before

15124



after



1300 Westheimer

before

15125



after



1300 Westheimer

before

15126



after



1500 California

before

15127



after



before

15128

2700 Commonwealth

after



before

15129

200 Avondale

after



1100 Richmond

before

15130



after



1000 Banks

before

15131



after



before

15132

1000 Milford

after



before

15133

1000 Milford

after



before

15134

1000 Milford

after



before

15135

4500 Dunlavy

after



4800 Dunlavy

before

15136



after



1700 Banks

before

15137



after



Dumpsters

before

15138

600 W Gray

after



Improvement District # 6

Graffiti Abatement

Before and After Pictures

August 22, 2015

Private Property

before

15139

400 Westheimer

after



before

15140

400 Westheimer

after



400 Westheimer

before

15141



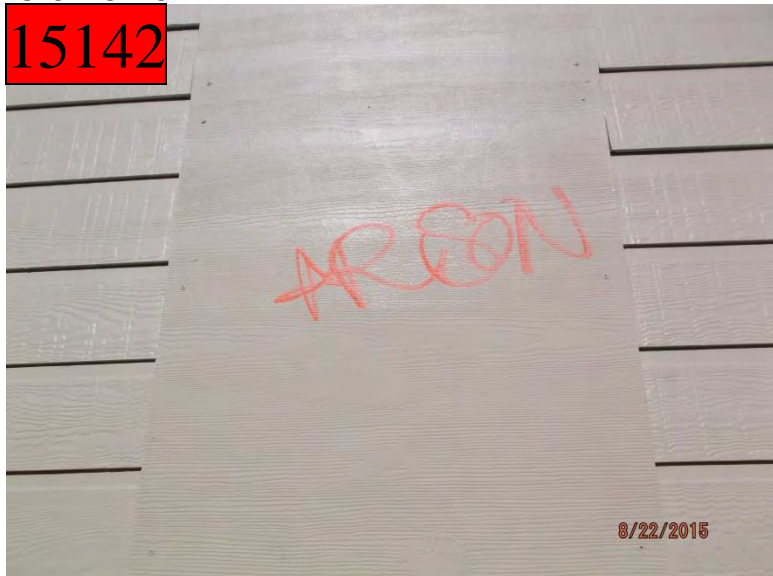
after



3100 Taft

before

15142



after

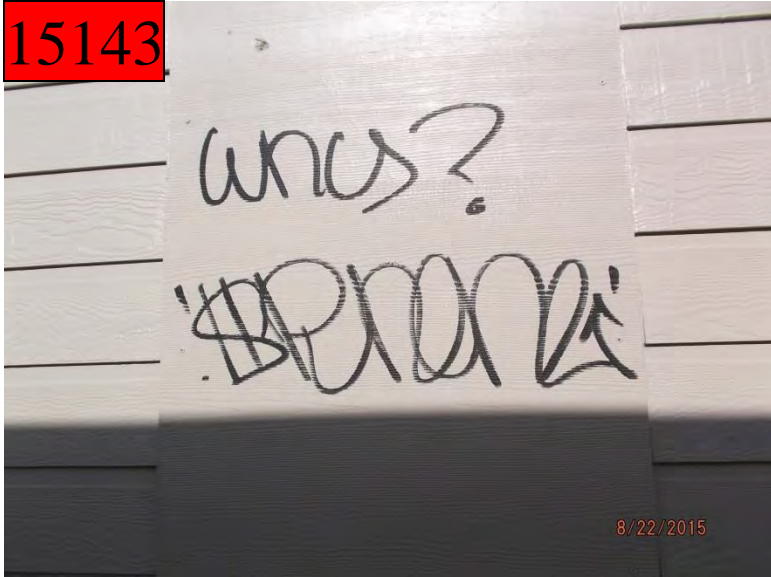


before

15143

3100 Taft

after

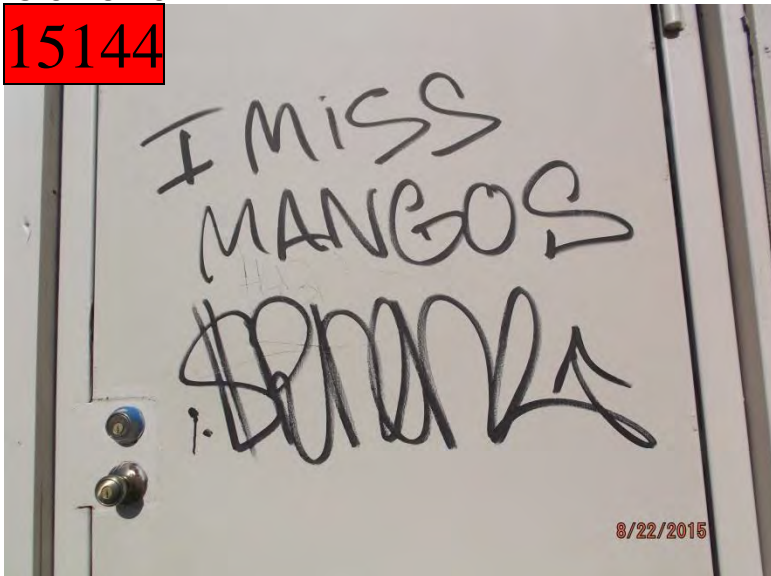


before

15144

3100 Taft

after



before

15145



3100 Taft

after



before

15146



3100 Taft

after



before

15147

3100 Taft

after



before

15148

3300 Taft

after



Public Property

400 Westheimer

before

15149



after



400 Westheimer

before

15150



after



before

15151

3300 Taft

after



before

15152

3400 Audubon

after



3500 Audubon

before

15153



after



500 W Alabama

before

15154



after



500 W Alabama

before

15155



after



900 Richmond

before

15156



after



1800 Westheimer

before

15157



after



1800 Westheimer

before

15158



after



1800 Westheimer

before

15159



after



1800 Westheimer

before

15160



after



before

15161



3700 Garrot

after



before

15162



4200 Mandell

after



before

15163

1400 Castle

after



before

15164

1400 Castle

after



before

15165



1400 Castle

after



before

15166



4300 Graustark

after



before

15167

600 Avondale

after



before

15168

1600 Fairview

after



before

15169

1800 Waugh

after



Improvement District # 6

Graffiti Abatement

Before and After Pictures

August 24, 2015

Public Property

1700 Westheimer

before

15170



after



1700 Westheimer

before

15171



after



before

15172



1500 Westheimer

after



before

15173



1500 Westheimer

after



before

300 Westheimer

after

15174



before

300 Westheimer

after

15175



before

15176



200 Avondale

after



before

15177



200 Avondale

after



before

15178



200 Avondale

after



before

15179



200 Avondale

after



before
15180

200 Fairview

after



before
15181

200 W Gray

after



before

15182

1700 Genesee

after



before

15183

1800 Mason

after



before

15184

1800 Mason

after



before

15185

800 W Gray

after



before

15186

300 W Gray

after

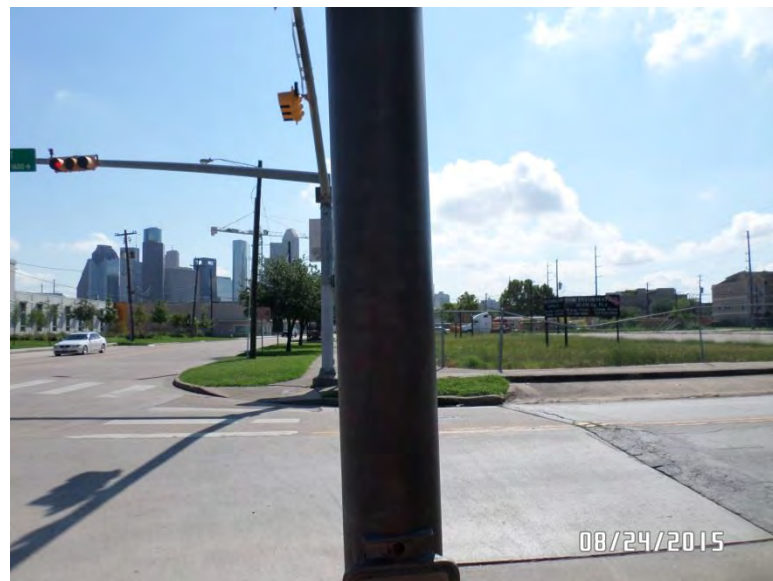


before

15187

1600 Taft

after



before

15188



100 Welch

after



before

15189



2006 Genesee

after



before

15190



2400 Mason

after



before

15191



2400 Mason

after



before

15192

2400 Mason

after



before

15193

2400 Mason

after



before
15194

2500 Mason

after



before
15195

600 Avondale

after



before

15196



2600 Mason

after



before

15197



2600 Mason

after



before
15198

700 Sul Ross

after



before
15199

600 W Alabama

after



4100 Stanford

before

15200



after



Improvement District # 6

Graffiti Abatement

Before and After Pictures

August 27, 2015

Private Property

1810 Richmond

before

15201



after



1810 Richmond

before

15202



after



1810 Richmond

before

15203



after



1810 Richmond

before

15204



after



3700 Mandell

before

15205



after



1200 Kenwood

before

15206



after



1400 Richmond

before

15207



after



Public Property

before

15208

3100 Montrose

after



before

15209

900 Westheimer

after



before

15210

900 Westheimer

after



before

15211

900 Westheimer

after



1800 Richmond

before

15212



after



1800 Richmond

before

15213



after



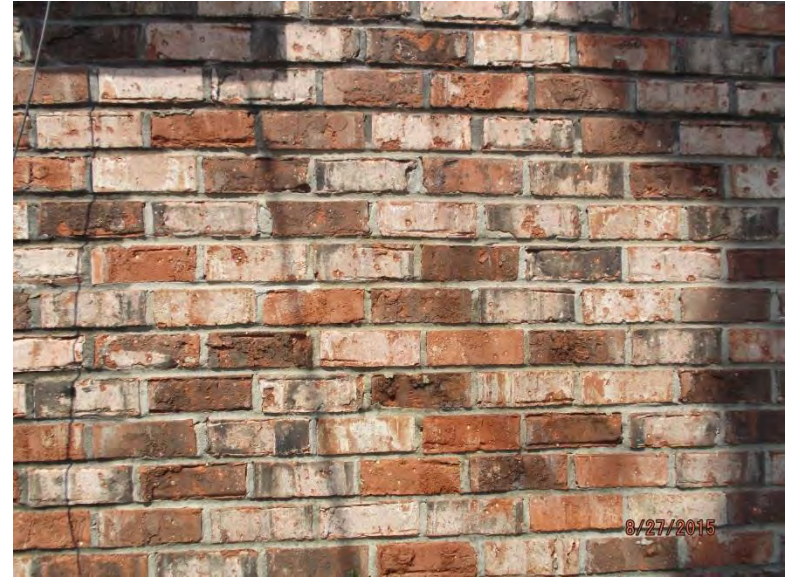
1800 Richmond

before

15214



after



1800 Richmond

before

15215



after



800 Westheimer

before

15216



after



4200 Hazard

before

15217



after



before

15218



4200 Hazard

after



before

15219



4200 Hazard

after



1000 Alabama

before

15220



after



1800 Fairview

before

15221



after



1800 Fairview

before

15222



after



1800 Fairview

before

15223



after



1600 W Alabama

before

15224



after



1600 W Alabama

before

15225



after



1600 W Alabama

before

15226



after



700 Colquitt

before

15227



after



1200 Richmond

before

15228



after



1200 Richmond

before

15229



after



before

1700 W Main

after

15230



before

4100 McDuffie

after

15231



before

3700 S Shepherd

after

15232



before

1400 Richmond

after

15233



Improvement District # 6

Graffiti Abatement

Before and After Pictures

August 31, 2015

Public Property

1400 Westheimer

before

15234



after



1400 Westheimer

before

15235



after



1400 Westheimer

before

15236



after



1100 Westheimer

before

15237



after



before

15238

3300 Taft

after



before

15239

500 Richmond

after



1400 Westheimer

before

15240



after



4400 Dunlavy

before

15241



after



1700 Westheimer

before

15242



after



2400 Woodhead

before

15243



after



2400 Woodhead

before

15244



after



1900 Fairview

before

15245



after



before

1500 Montrose

after

15246



before

1500 Montrose

after

15247



before

15248

1500 Montrose

after



before

15249

1500 Montrose

after



1300 Stanford

before

15250



after



2500 Dallas

before

15251



after

