

Harris County Improvement District # 6



Graffiti Abatement Reports

November 2010

Harris County Improvement District #6

Monthly Graffiti Abatement Reports 2010

Abated	Jan	Feb	Mar	Apr	May	June	July	Aug	Sept	Oct	Nov	Dec	2010 Total
Business Property	6	2	20	20	15	9	9	8	4	15	12		120
Public Property	42	66	86	74	82	85	113	86	98	62	56		850
Trash Dumpsters	0	4	3	1	0	7	3	5	10	8	1		42
Total:	48	72	109	95	97	101	125	99	123	85	69		1012

Graffiti Abatement Reports Totals 2008 - 2010				
	2008	2009	2010	Totals
Abated				
Business Property	184	98	120	402
Public Property	538	771	850	2159
Trash Dumpsters	28	40	42	110
Total:	750	909	1012	2671

Improvement District # 6

Graffiti Abatement

Before and After Pictures

November 5, 2010

Business Property

2100 Montrose

before

2603



after



3300 Taft

before

2604



after



524 Westheimer

before

2605



after



Public Property

Taft and W. Dallas

before

2606



after



1926 W. Dallas

before

2607



after



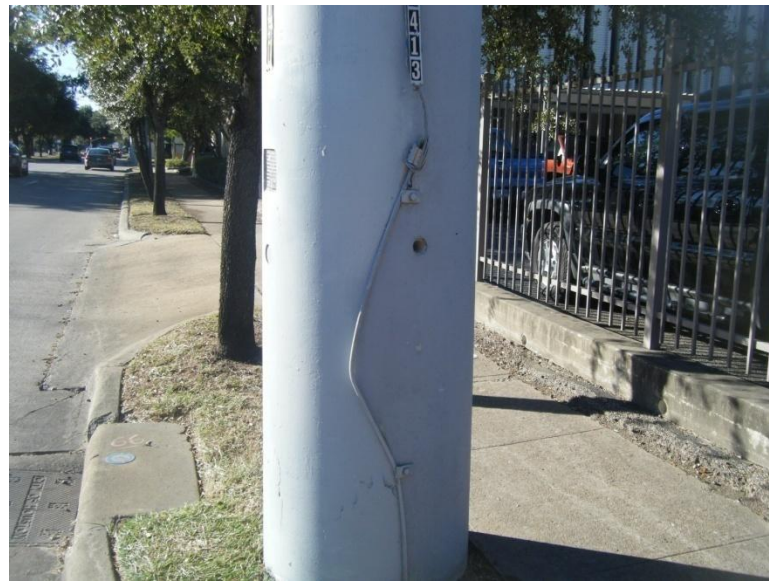
2100 Montrose

before

2608



after



Richmond and Montrose

before

2609



after



Richmond and Montrose

before

2610



after



Richmond and Montrose

before

2611



after



1300 Stanford

before

2612



after



3314 Taft

before

2613



after



before

3314 Taft

after

2614

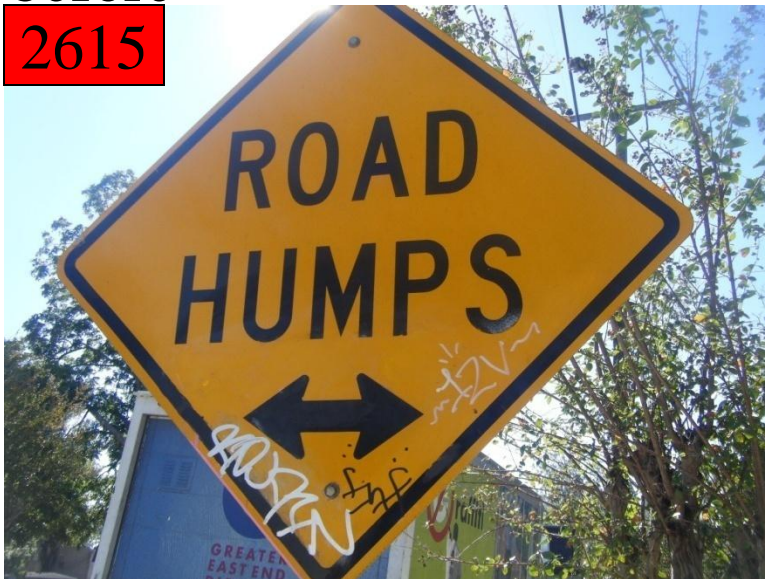


before

3314 Taft

after

2615



2600 Hopkins

before

2616



after



2900 Taft

before

2617



after



before

2900 Taft

after

2618



before

38012 Alabama

after

2619



before

2900 Taft

after

2620



before

2900 Taft

after

2621



Improvement District # 6

Graffiti Abatement

Before and After Pictures

November 11, 2010

Public Property

before

2622

Montrose and W. Gray

after



before

2623

Montrose and W. Gray

after



Montrose and Westheimer

before

2624



after



Montrose and Westheimer

before

2625



after



before **Montrose and Westheimer – Scheduled Sandblaster** after

2626



before

Montrose and Westheimer

after

2627



Montrose and Westheimer

before

2628



after



Montrose and Alabama

before

2629



after



before

2630

Kyle and Oakley

after



before

2631

Kyle and Oakley

after



4317 Montrose

before

2632



after



before

2633



702 W. Gray

after



before

710 W. Gray

after

2634



before

700 W. Gray

after

2635



before

614 W. Gray

after

2636



before

414 W. Gray

after

2637



1600 Stanford

before

2638



after



1600 Stanford

before

2639



after



before

600 Kipling

after

2640



before

3314 Taft

after

2641



before

600 Alabama

after

2642



before

2000 Whitney

after

2643



700 Richmond

before

2644



after



2223 Montrose

before

2645



after



Dumpsters

before

614 W. Gray

after

2646



Improvement District # 6

Graffiti Abatement

Before and After Pictures

November 19, 2010

Public Property

before

2647

3100 Montrose

after



before

2648

600 Hawthorne

after



1000 Richmond

before

2649



after



4100 Milam

before

2650



after



before

700 W. Main

after

2651



before

600 W. Gray

after

2652



before

3700 Flora

after

2653



before

217 Marshall

after

2654



200 W. Moreland

before

2655



after



3800 Garrott

before

2656



after



4500 Montrose

before

2657



after



Improvement District # 6

Graffiti Abatement

Before and After Pictures

November 24, 2010

Business Property

before

2658

234 Westheimer

after



before

2659

600 Westheimer

after



600 Westheimer

before

2660



after



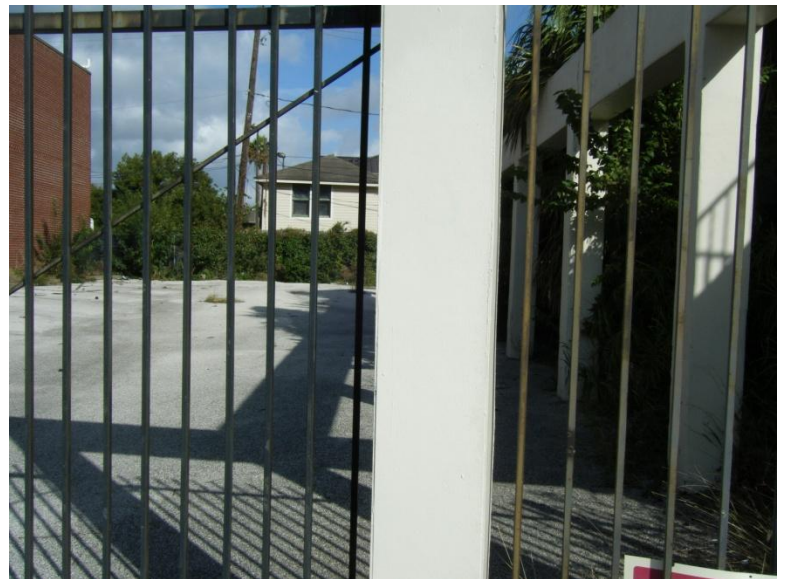
600 Westheimer

before

2661



after



600 Westheimer

before

2662



after



630 Hawthorne

before

2663



after



630 Hawthorne

before

2664



after



630 Hawthorne

before

2665



after



515 Westheimer- Scheduled Sandblaster

before

2666



after



Public Property

before

2700 Tuft

after

2667



before

300 W. Grey

after

2668



before

2600 Taft

after

2669



before

800 Hawthorne

after

2670



before

2671

800 Westheimer

after

