

Harris County Improvement District # 6



Graffiti Abatement Reports

July 2010

Harris County Improvement District #6

Monthly Graffiti Abatement Reports 2010

Abated	Jan	Feb	Mar	Apr	May	June	July	Aug	Sept	Oct	Nov	Dec	2010 Total
Business Property	6	2	20	20	15	9	9						81
Public Property	42	66	86	74	82	85	113						548
Trash Dumpsters	0	4	3	1	0	7	3						18
Total:	48	72	109	95	97	101	125						647

Graffiti Abatement Reports Totals 2008 - 2010				
	2008	2009	2010	Totals
Abated				
Business Property	184	98	81	363
Public Property	538	771	548	1857
Trash Dumpsters	28	40	18	86
Total:	750	909	647	2306

Improvement District # 6

Graffiti Abatement

Before and After Pictures

July 1, 2010

Public Property

2100 Montrose

before

2182



after



1005 Columbus

before

2183



after



1005 Columbus

before

2184



after



2000 W Dallas

before

2185



after



1900 W Dallas

before

2186



after



2600 Taft

before

2187



after



before

300 Pacific

after

2188



before

300 Pacific

after

2189



4400 Stanford

before

2190



after



600 Avondale

before

2191



after



116 Westheimer

before

2192



after



300 Hawthorne

before

2193



after



before

3804 Brandt

after

2194



before

3804 Brandt

after

2195



before

3900 Garrett

after

2196



before

3900 Garrett

after

2197



2600 Whitney

before

2198



after



Improvement District # 6

Graffiti Abatement

Before and After Pictures

July 6, 2010

Public Property

before

400 Lovett

after

2199



before

2300 Montrose

after

2200



before

2201

2300 Montrose

after



before

2202

900 Montrose

after



before

1600 Taft

after

2203



before

3314 Taft

after

2204



518 Hawthorne

before

2205



after



300 Branard

before

2206



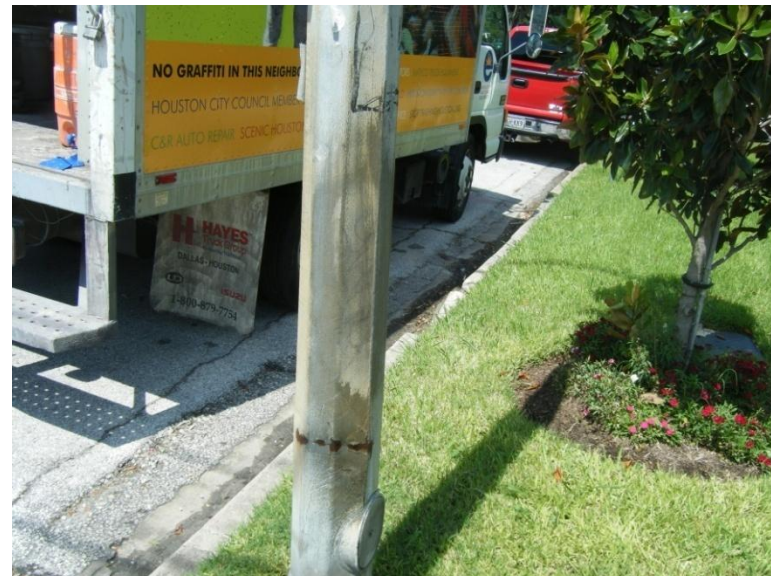
after



before

400 Avendale

after



before

3900 Garrot

after



before

2000 Taft

after

2209



Improvement District # 6

Graffiti Abatement

Before and After Pictures

July 9, 2010

Business Property

3400 Montrose

before

2210



after



701 Alabama

before

2211



after



Public Property

before

2212

1002 Montrose

after



before

2213

1711 Montrose

after



before

2214

1900 Montrose

after



before

2215

2100 Montrose

after



before

2216

2200 Montrose

after



before

2217

2200 Montrose

after



2220 Montrose

before

2218



after



2300 Montrose

before

2219



after



2320 Montrose

before

2220



after



2310 Montrose

before

2221



after



before

2222

2606 Montrose

after



before

2223

3400 Montrose

after



before

2224

3420 Montrose

after



before

2225

3560 Montrose

after

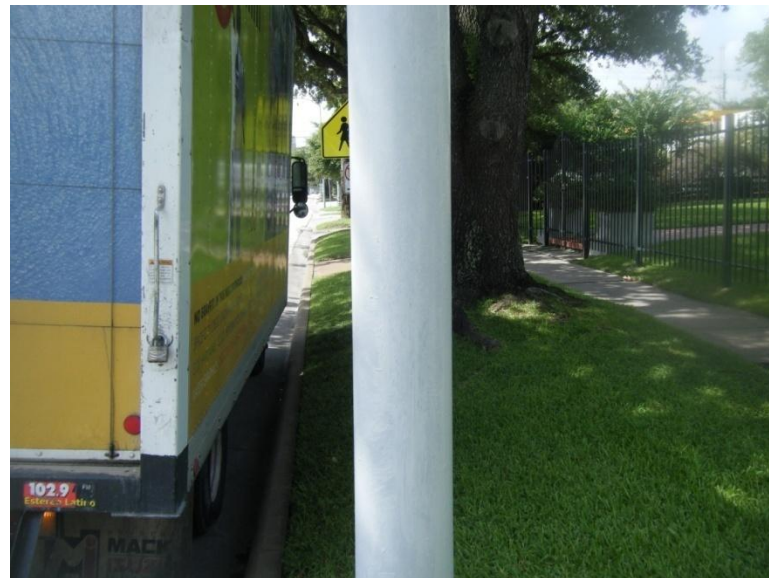


before

3700 Montrose

after

2226



before

3314 Taft

after

2227



before

3314 Taft

after

2228



before

3300 Taft

after

2229



before

3318 Taft

after

2230



before

590 Alabama

after

2231



before

701 Alabama

after

2232



before

550 W Gray

after

2233



before

614 W Gray

after



Dumpsters

before

600 Alabama

after

2235



Improvement District # 6

Graffiti Abatement

Before and After Pictures

July 15, 2010

Public Property

before

4310 Greeley

after

2236



before

4310 Greeley

after

2237



500 Richmond

before

2238



after



500 Richmond

before

2239



after



510 Richmond

before

2240



after



512 Richmond

before

2241



after

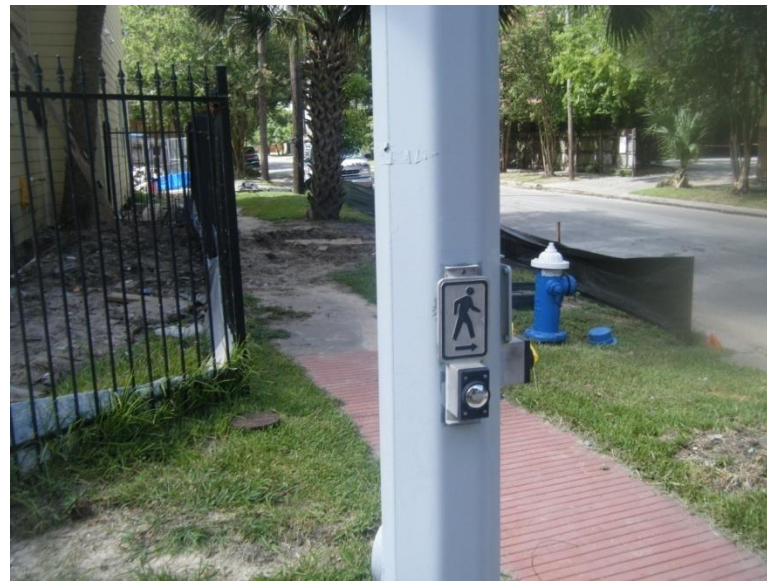


before

800 Alabama

after

2242



before

800 Alabama

after

2243



3800 Stanford

before

2244



after



800 Alabama

before

2245



after

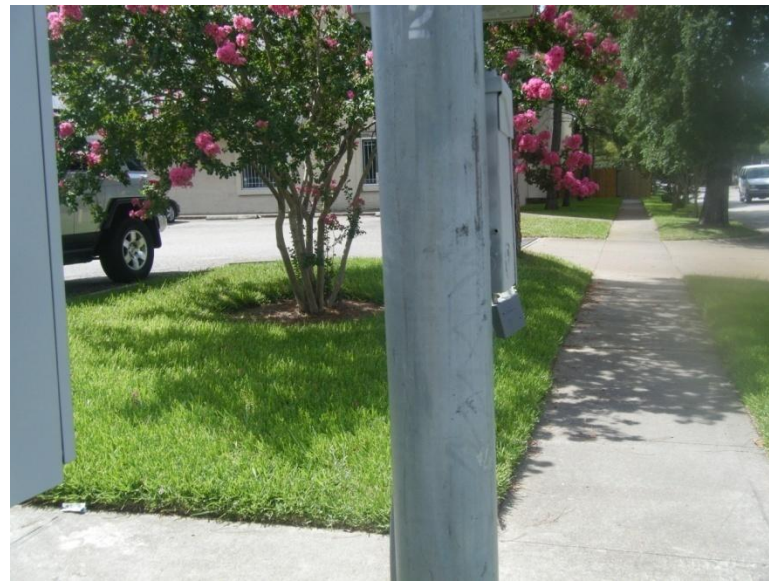


before

600 Alabama

after

2246



before

600 Alabama

after

2247



before

600 Alabama

after

2248



before

3804 Brandt

after

2249



before

3900 Brandt

after

2250



before

3900 Brandt

after

2251



before

2252

1600 Montrose

after



before

2253

713 Clay

after



before

710 W Gray

after

2254



before

400 Main

after

2255



2200 Montrose

before

2256



after



2224 Montrose

before

2257



after



before

2224 Montrose

after

2258



before

2224 Montrose

after

2259



Improvement District # 6

Graffiti Abatement

Before and After Pictures

July 22, 2010

Business Property

910 Westheimer

before

2260



after



910 Westheimer

before

2261



after



910 Westheimer

before

2262



after



1103 Bomor

before

2263



after



before

3800 Greeley

after

2264



Public Property

before

502 Alabama

after

2265



before

904 Westheimer

after

2266



before

515 W. Grey

after

2267



before

515 W. Grey

after

2268



before

518 W. Grey

after

2269



before

3900 Bagby

after

2270



Hawthorne and Bagby

before

2271



after



1301 Colquitt

before

2272



after



before

703 Colquitt

after

2273

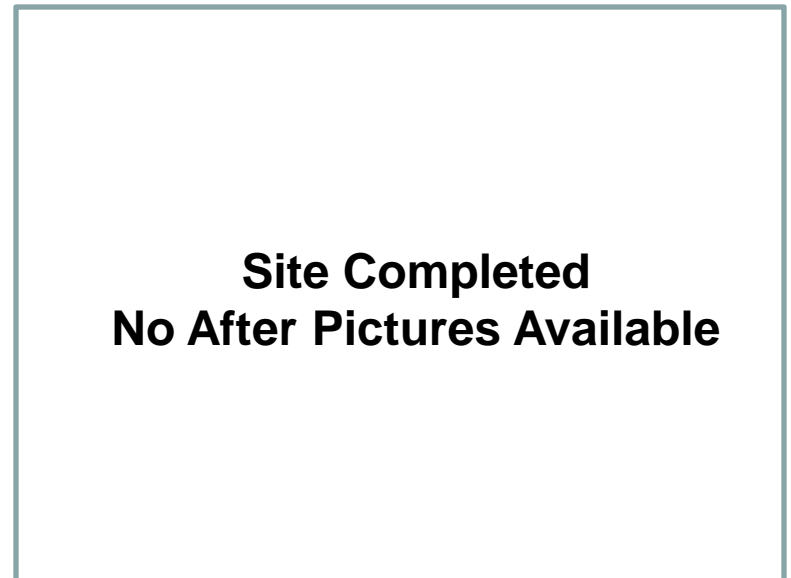


before

700 Richwood

after

2274



before

900 W. Main

after

2275



before

800 Branard

after

2276



before

700 Sul Ross

after

2277



before

900 Kipling

after

2278



before

3500 Montrose

after



before

2100 Taft

after



before

301 Drew

after

2281



Dumpsters

3502 Burlington

before

2282



after



1300 Colquitt

before

2283



after



Improvement District # 6

Graffiti Abatement

Before and After Pictures

July 30, 2010

Business Property

before

3300 Taft

after

2284



before

400 Westheimer

after

2285



Public Property

4300 Roseland

before

2286



after



1000 W. Main

before

2287



after



1200 Colquitt

before

2288



after



3400 Montrose

before

2289



after

**Site Completed
No After Picture Available**

803 Hawtorne

before

2290



after



700 Hawtorne

before

2291



after



before

3000 Taft

after

2292



before

2711 Taft

after

2293



before

2710 Taft

after

2294



before

312 Pacific

after

2295



before

2715 Taft

after

2296



before

3300 Taft

after

2297

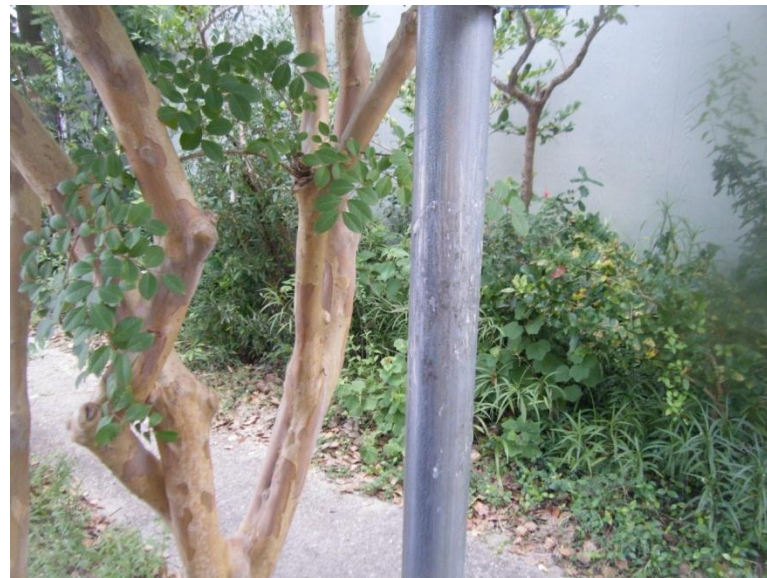


before

2298

3402 Roseland

after



before

2299

3402 Roseland

after



3400 Roseland

before

2300



after



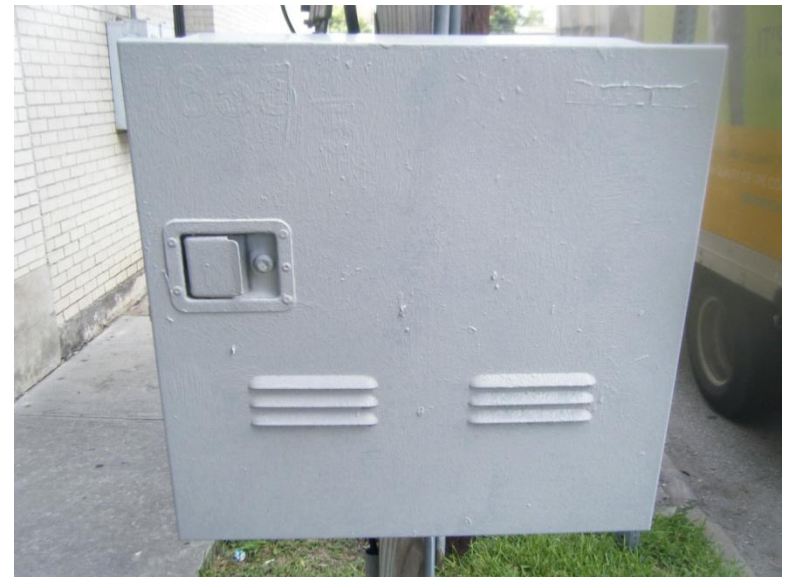
before

2301

1855 Jack



after



before

3814 Taft

after

2302



before

3814 Taft

after

2303



100 Westheimer

before

2304



after



100 Westheimer

before

2305



after



before

2306

1500 Montrose

after

