

Harris County Improvement District # 6



Graffiti Abatement Reports

December 2010

Harris County Improvement District #6

Monthly Graffiti Abatement Reports 2010

Abated	Jan	Feb	Mar	Apr	May	June	July	Aug	Sept	Oct	Nov	Dec	2010 Total
Business Property	6	2	20	20	15	9	9	8	4	15	12	24	144
Public Property	42	66	86	74	82	85	113	86	98	62	56	85	935
Trash Dumpsters	0	4	3	1	0	7	3	5	10	8	1	6	48
Total:	48	72	109	95	97	101	125	99	123	85	69	115	1127

Graffiti Abatement Reports Totals 2008 - 2010				
	2008	2009	2010	Totals
Abated				
Business Property	184	98	144	426
Public Property	538	771	935	2244
Trash Dumpsters	28	40	48	116
Total:	750	909	1127	2786

Improvement District # 6

Graffiti Abatement

Before and After Pictures

December 3, 2010

Business Property

1002 Montrose

before

2672



after



1002 Montrose

before

2673



after



before

2674

1002 Montrose

after



before

2675

1700 Montrose

after

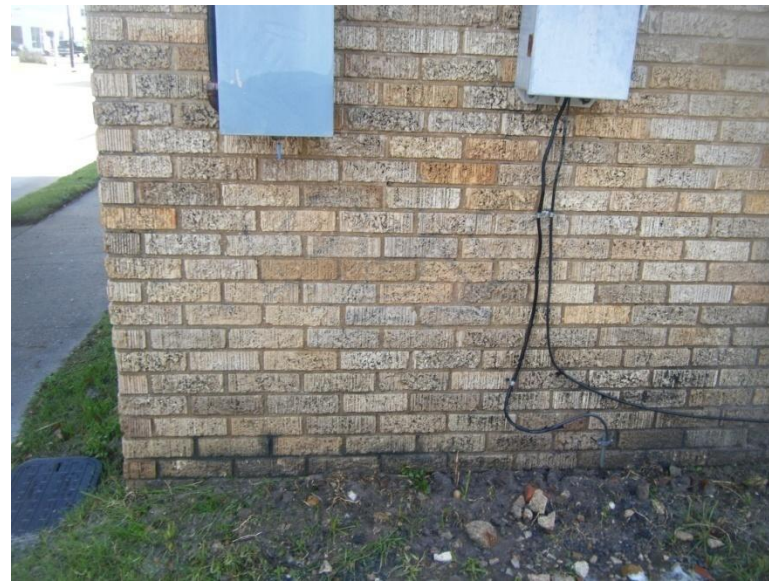


before

2676

1915 W. Dallas

after



before

2677

2500 Montrose

after



Westheimer and Whitney

before

2678



after



Westheimer and Whitney

before

2679



after



Westheimer and Whitney

before

2680



after



Westheimer and Whitney

before

2681



after



Public Property

2700 Montrose

before

2682



after



1700 Montrose

before

2683



after



before

2684

2500 Montrose

after



before

2685

2700 Montrose

after



before

1006 Taft

after

2686



before

1937 W. Dallas

after

2687



Stanford and Clay

before

2688



after



1006 Taft

before

2689



after



before

2690

Stanford and Clay

after



before

2691

Stanford and Clay

after



before

516 W. Gray

after

2692



before

1200 Taft

after

2693



before

516 W. Gray

after

2694



before

W. Gray and Stanford

after

2695



before

710 W. Gray

after

2696



before

403 W. Gray

after

2697



before

818 ½ Taft

after

2698



before

818 ½ Taft

after

2699



before

818 ½ Taft

after

2700



before

Westheimer and Whitney

after

2701



Westheimer and Whitney

before

2702



after



Dumpsters

before

1006 Taft

after

2703



before

614 W. Gray

after

2704



Improvement District # 6

Graffiti Abatement

Before and After Pictures

December 9, 2010

Business Property

600 W. Pierce

before

2705



after



524 Westheimer

before

2706



after



before

2700 Grant

after



Public Property

W. Dallas and Taft

before

2708



after



W. Dallas and Taft

before

2709



after



before

2710

1000 W. Dallas

after



before

2711

2200 W. Dallas

after



before

600 W. Gray

after

2712



before

1600 Stanford

after

2713



1600 Stanford

before

2714



after



1608 Stanford

before

2715



after



600 W. Pierce

before

2716



after



1400 Stanford

before

2717



after



1500 Stanford

before

2718



after



702 W. Gray

before

2719



after



before

2300 Taft

after

2720



before

3600 Garrett

after

2721



before

2722

Alabama and Stanford

after



before

2723

Alabama and Stanford

after



before

700 W. Clay

after

2724



before

801 W. Clay

after

2725



before

1000 W. Clay

after

2726



before

2900 Taft

after

2727



before

2900 Taft

after

2728



Dumpsters

before

614 W. Gray

after

2729



Improvement District # 6

Graffiti Abatement

Before and After Pictures

December 17, 2010

Business Property

before

700 W. Clay

after

2730



before

420 Colquitt

after

2731



Public Property

4200 Graustark

before

2732



after



3900 Greeley

before

2733



after



before

526 Colquitt

after

2734



before

3300 Roseland

after

2735



before

3300 Taft

after

2736



before

2600 Stanford

after

2737



before

2000 Grant

after

2738



before

3900 Montrose

after

3739



before

2740

1010 W. Alabama

after



before

2741

900 W. Main

after



before

420 Colquitt

after

2742



before

700 Kipling

after

2743



before

2744

700 Kipling

after



Improvement District # 6

Graffiti Abatement

Before and After Pictures

December 22, 2010

Business Property

before

922 Alabama

after

2745



before

922 Alabama

after

2746



before

922 Alabama

after

2747



before

1700 Montrose

after

2748



1000 Richmond

before

2749



after



1600 Stanford

before

2750



after



before

2900 Taft

after

2751



Public Property

before

2752

Montrose and W. Gray

after



before

2753

Montrose and W. Gray

after



before

2754

1616 Montrose

after



before

2755

1616 Montrose

after



before

922 Alabama

after

2756



before

Montrose and W. Gray

after

2757



before

2758

Montrose and W. Gray

after



before

2759

Montrose and W. Gray

after



before

700 W. Gray

after

2760



before

1600 Stanford

after

2761



before

200 Fairview

after



before

Taft and Avondale

after



before

700 Peden

after

2764



before

1000 Richmond

after

2765



4300 Yoakum

before

2766



after



4300 Yoakum

before

2767



after



900 Richmond

before

2768



after



2700 Grant

before

2769



after



1600 Stanford

before

2770



after



Dumpsters

before

2771

534 Westheimer

after



Improvement District # 6

Graffiti Abatement

Before and After Pictures

December 29, 2010

Business Property

before

2772

1300 Montrose

after



before

2773

500 Hawthorne

after



Public Property

before

3400 Garrett

after

2774



before

4100 Stanford

after

2775



before

3700 Garrett

after

2776



before

1300 Stanford

after

2777



500 Hyde Park

before

2778



after



800 Hawthorne

before

2779



after



800 Hawthorne

before

2780



after



3300 Whitney

before

2781



after



before

2782



700 Kipling

after



before

2783



600 Kipling

after



before

2784

600 Alabama

after



Dumpsters

before

4000 Garrett

after

2785



before

602 Alabama

after

2786

