

# Montrose District



Graffiti Abatement Reports

---

December 2012

# Montrose District

## Monthly Graffiti Abatement Reports 2012

Abated	Jan	Feb	Mar	Apr	May	June	July	Aug	Sept	Oct	Nov	Dec	2012 Total
Business Property	74	42	47	41	37	56	35	28	42	55	23	42	522
Public Property	105	135	182	158	134	124	168	129	133	131	199	126	1724
Trash Dumpsters	7	10	8	15	12	9	9	7	7	9	8	13	114
<b>Total:</b>	<b>186</b>	<b>187</b>	<b>237</b>	<b>214</b>	<b>183</b>	<b>189</b>	<b>212</b>	<b>164</b>	<b>182</b>	<b>195</b>	<b>222</b>	<b>181</b>	<b>2,360</b>

Graffiti Abatement Reports Totals 2008 - 2012						
	2008	2009	2010	2011	2012	Totals
<b>Abated</b>						
Business Property	184	98	144	563	522	1511
Public Property	538	771	935	1,802	1,724	5,770
Trash Dumpsters	28	40	48	59	114	289
<b>Total:</b>	<b>750</b>	<b>909</b>	<b>1,127</b>	<b>2,424</b>	<b>2,360</b>	<b>7,570</b>

# Improvement District # 6

Graffiti Abatement

**Before and After Pictures**

**December 3, 2012**

# Public Property



## 2700 Yoakum

before

7390



after



## 1100 Fairview

before

7391



after





before

2000 Yupon

after

7392



before

1100 Drew

after

7393



before

7394

Westheimer and Waugh

after



before

7395

Westheimer and Waugh

after





before

7396

## Westheimer and Waugh

after



before

7397

## Westheimer and Waugh

after



before

7398



## Westheimer and Waugh

after



before

7399



## Westheimer and Waugh

after





before

7400

## Westheimer and Waugh

after



before

7401

## Westheimer and Waugh

after



before

7402

## Westheimer and Waugh

after



before

7403

## Westheimer and Waugh

after





before

7404

## Westheimer and Waugh

after



before

7405

## Westheimer and Waugh

after





before

7406

Westheimer and Waugh

after



before

7407

Westheimer and Waugh

after



before

7408

# Westheimer and Waugh

after



# Improvement District # 6

Graffiti Abatement

**Before and After Pictures**

**December 5, 2012**

# Business Property



before

7409

1717 Montrose

after



before

7410

1717 Montrose

after



# Improvement District # 6

Graffiti Abatement

**Before and After Pictures**

**December 6, 2012**

# Business Property

## 400 Westheimer

before

7411



after



## 1232 Westheimer

before

7412



after





## 3803 Mandell

before

7413



after



## 3803 Mandell

before

7414



after



# Public Property

## 1400 Hawthorne

before

7415



after



## 1417 Westheimer

before

7416



after





before

## 600 Marshall

after

7417



before

## 600 Alabama

after

7418



before

7419

## 400 Westheimer

after



before

7420

## 400 Westheimer

after





before

7421

400 Westheimer

after



before

7422

3700 Yoakum

after



## 3300 Mt. Vernon

before

7423



after



## 2700 Taft

before

7424



after



# Dumpsters



## 1417 Westheimer

before

7425



after



## 1417 Westheimer

before

7426



after



# Improvement District # 6

Graffiti Abatement

**Before and After Pictures**

**December 8, 2012**

# Business Property



before

1700 Taft

after

7427



before

2901 Taft – sandblasting required

after

7428



# Public Property



before

## 500 Branard

after

7429



before

## 3900 Milam

after

7430





## 1900 Fairview

before

7431



after



## 4300 Mandell

before

7432



after



# 800 Richmond

before

7433



after





# Improvement District # 6

Graffiti Abatement

**Before and After Pictures**

**December 10, 2012**

# Business Property

before

1208 Welch

after



before

1910 Waugh

after



before

## 1910 Waugh

after

7436



before

## 417 Westheimer

after

7437





# 430 Hawthorne

before

7438



after



# Public Property

## 4300 Dunlavy

before

7439



after



## 4300 Dunlavy

before

7440



after





before

7441

3402 Roseland

after



before

7442

3402 Roseland

after





## 3402 Roseland

before

7443



after



## 2500 Yoakum

before

7444



after



before

1900 Waugh

after

7445



before

1900 Waugh

after

7446





before

1900 Waugh

after

7447



before

1900 Waugh

after

7448



before

## 1212 Kipling

after



# Dumpsters



before

2700 Lincoln

after

7450



before

417 Westheimer

after

7451



## 425 Westheimer

before

7452



after



# Improvement District # 6

Graffiti Abatement

**Before and After Pictures**

**December 12, 2012**



# Business Property

before

1918 Taft

after

7453

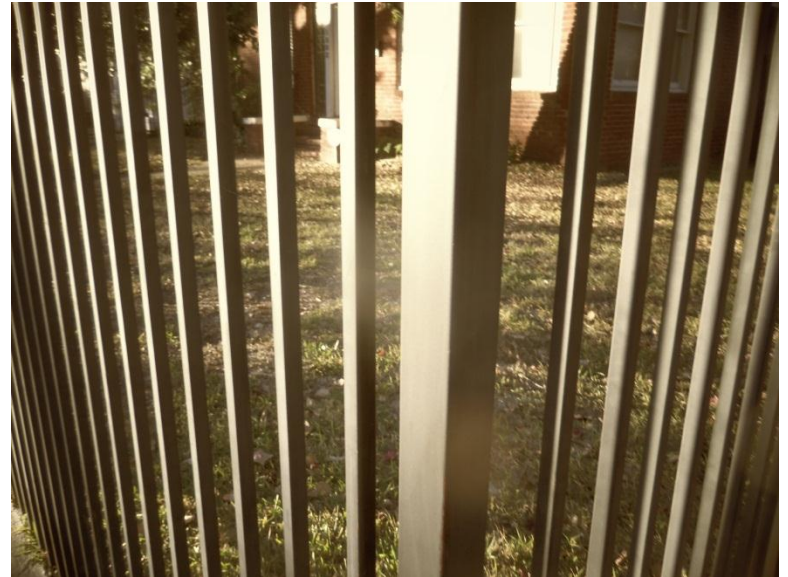


before

1400 Harold

after

7454



# Public Property

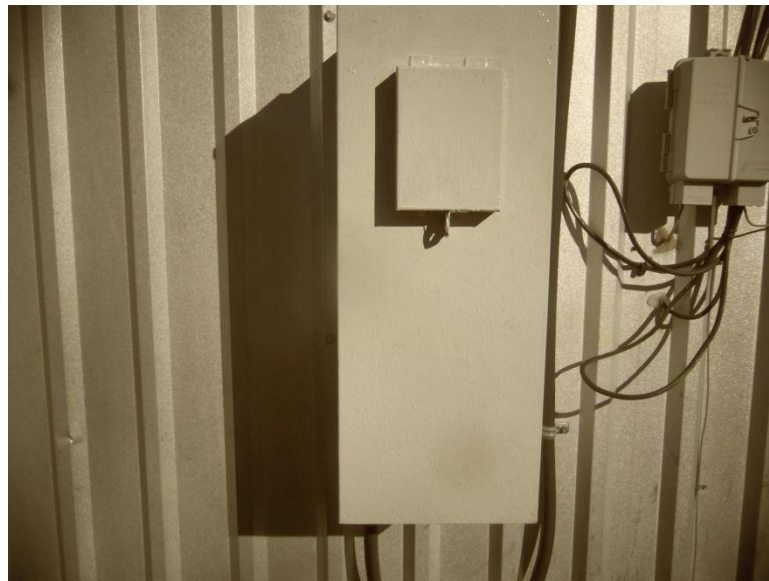


before

## 304 Willard

after

7455

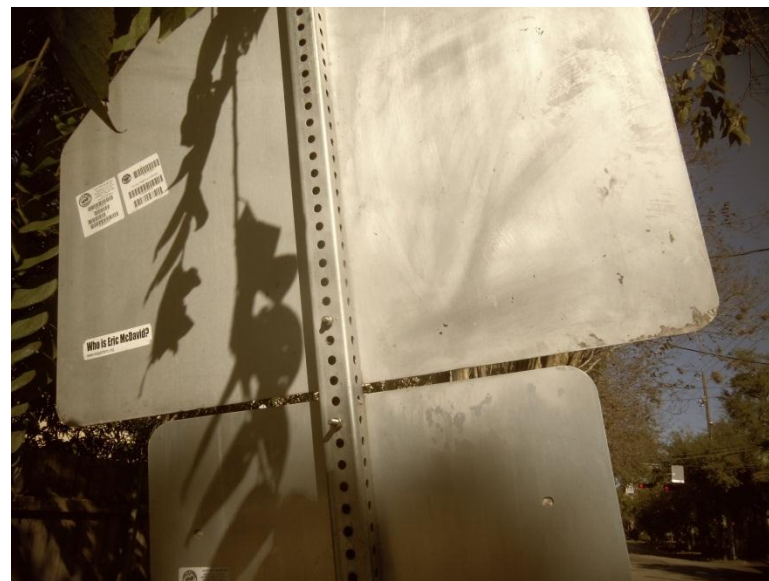
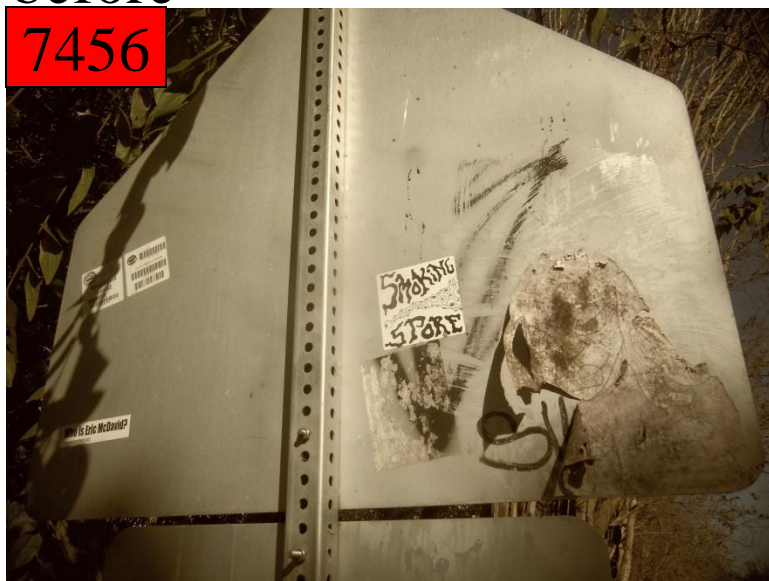


before

## 3800 Stanford

after

7456



## 3800 Stanford

before

7457



after



## 3700 Stanford

before

7458



after





before

400 Lovett

after

7459



before

1648 Colquitt

after

7460





before

800 W. Main

after

7461



before

1841 W. Main

after

7462





## 1512 Branard

before

7463



after



## 1417 Branard

before

7464



after





## 3400 Mulberry

before

7465



after



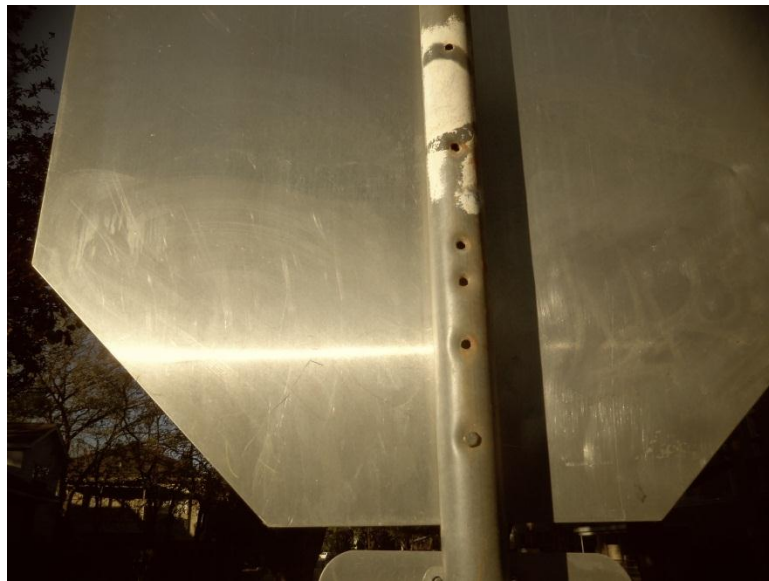
## 3400 Mulberry

before

7466



after





before

1400 Harold

after



# Improvement District # 6

Graffiti Abatement

**Before and After Pictures**

**December 17, 2012**

# Public Property

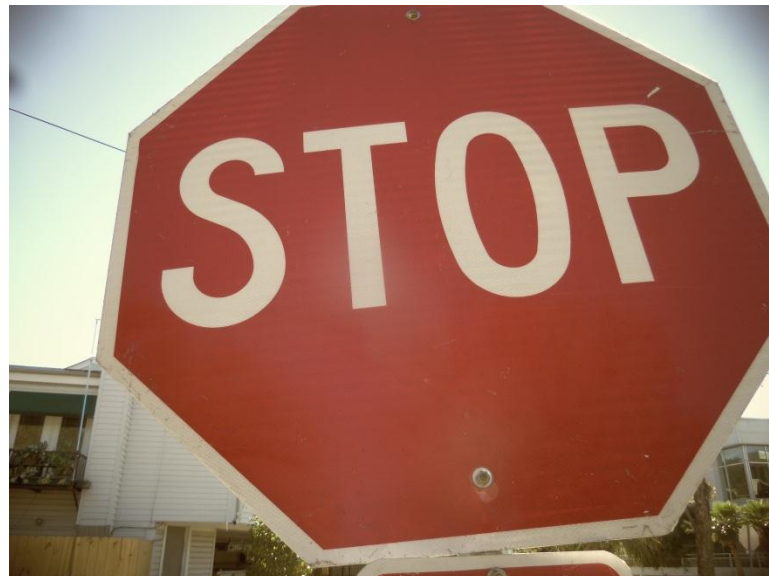


before

310 Pacific

after

7468



before

3314 Taft

after

7469



before

3300 Taft

after

7470



before

3400 Flora

after

7471





before

## 615 Alabama

after

7472



before

## 500 Alabama

after

7473





## 1600 California

before

7474



after



## 2700 Windsor

before

7475



after





## 1700 California

before

7476



after



## 2700 Windsor

before

7477



after



# Improvement District # 6

Graffiti Abatement

**Before and After Pictures**

**December 18, 2012**



# Business Property

before

3300 Taft

after

7478

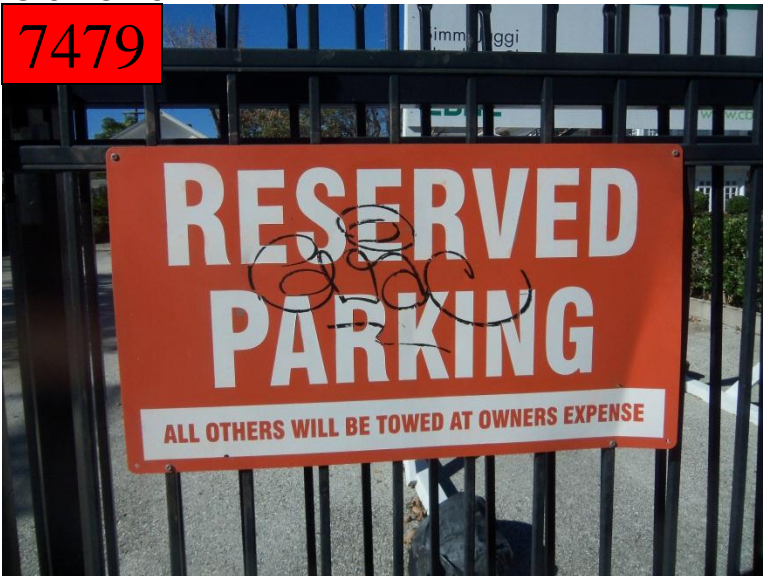


before

3300 Taft

after

7479





## 800 Richmond

before

7480



after



## 1631 Westheimer

before

7481



after





## 1631 Westheimer

before

7482



after



## 1637 Westheimer

before

7483



after





## 1627 Westheimer

before

7484



after



## 1627 Westheimer

before

7485



after



# 1627 Westheimer

before

7486



after



# 1627 Westheimer

before

7487



after





## 1627 Westheimer

before

7488



after



## 1627 Westheimer

before

7489



after



# 1627 Westheimer

before

7490



after



# Public Property



before

600 Bell

after

7491



before

600 Pierce

after

7492





before

300 Peden

after

7493



before

300 Peden

after

7494





before

700 Peden

after

7495



before

700 Peden

after

7496





before

614 W. Gray

after

7497



before

3300 Taft

after

7498





## 1600 Colquitt

before

7499



after



## 1200 Westheimer

before

7500



after





## 1200 Westheimer

before

7501



after



## 1200 Westheimer

before

7502



after





before

7503

3900 McDuffie

after



before

7504

3900 McDuffie

after



# 4700 Mandell

before

7505



after



# Dumpsters



before

614 W. Gray

after

7506



before

3300 Taft

after

7507





before

3300 Taft

after

7508



before

4000 McDuffie

after

7509



## 4200 Dunlavy

before

7510



after





# Improvement District # 6

Graffiti Abatement

**Before and After Pictures**

**December 20, 2012**

# Business Property

before

300 W. Gray

after

7511



before

1600 Taft

after

7512





before

1600 Taft

after

7513



before

1722 Taft

after

7514



before

1722 Taft

after

7515



before

1722 Taft

after

7516



# Mandell and Westheimer

before

7517



after





# Public Property

before

1500 Taft

after

7518



before

3314 Taft

after

7519





before

3314 Taft

after

7520



before

400 Avondale

after

7521





before

2829 Taft

after

7522



before

2829 Taft

after

7523



before

2829 Taft

after

7524



before

215 Westheimer

after

7525





## Mandell and Westheimer

before

7526



after



## Mandell and Westheimer

before

7527



after





# Mandell and Westheimer

before

7528



after



# Improvement District # 6

Graffiti Abatement

**Before and After Pictures**

**December 22, 2012**

# Business Property



before

## 2400 Mason

after

7529



# Public Property

before

7530



1900 W. Dallas

after



before

7531



1006 Taft

after





before

2900 Taft

after

7532



before

2900 Taft

after

7533





before

## 2400 Mason

after

7534



before

## 214 Fairview

after

7535



before

3700 Garrett

after

7536



before

3800 Garrett

after

7537





before

3800 Garrett

after

7538



before

3700 Stanford

after

7539





## 3500 Stanford

before

7540



after



## 1000 Richmond

before

7541



after





before

900 Oakley

after

7542



before

900 W. Alabama

after

7543





## 2000 Stanford

before

7544



after



## 2000 Stanford

before

7545



after



# Dumpsters



before

3720 Garrot

after

7546



before

4000 Jack

after

7547





before

4400 Kyle

after

7548



# Improvement District # 6

Graffiti Abatement

**Before and After Pictures**

**December 27, 2012**

# Business Property



# 1627 Westheimer

before

7549



after



# 1627 Westheimer

before

7550



after



# 1627 Westheimer

before

7551



after



# 1627 Westheimer

before

7552



after





## 1627 Westheimer

before

7553



after



## 1300 Westheimer

before

7554



after



# Public Property



## 1600 Westheimer

before

7555



after



## 1627 Westheimer

before

7556



after





# 1627 Westheimer

before

7557



after



# 1627 Westheimer

before

7558



after





## 2600 Woodhead

before

7559



after



## 2600 Woodhead

before

7560



after





## 3500 Woodhead

before

7561



after



## 3500 Woodhead

before

7562



after





before

7563

1700 Montrose

after



before

7564

1700 Montrose

after





## 1900 W. Gray

before

7565



after



## 1900 Vermont

before

7566



after





## 3300 Dunlavy

before

7567



after



## 3300 Dunlavy

before

7568



after





## 2700 Dunlavy

before

7569



after



## 4500 Graustark

before

7570



after

