

Montrose District



Graffiti Abatement Reports

November 2013

Montrose District

Monthly Graffiti Abatement Reports 2013

Abated	Jan	Feb	Mar	Apr	May	June	July	Aug	Sept	Oct	Nov	Dec	2013 Total
Business Property	61	39	31	34	63	32	49	39	35	26	31		440
Public Property	145	102	161	163	153	131	141	148	173	156	158		1631
Trash Dumpsters	6	3	8	10	8	7	10	2	9	5	3		71
Total:	212	144	200	207	224	170	200	189	217	187	192		2142

Graffiti Abatement Reports Totals 2008 - 2013

	2008	2009	2010	2011	2012	2013	Totals
Abated							
Business Property	184	98	144	563	522	440	1951
Public Property	538	771	935	1,802	1,724	1631	7401
Trash Dumpsters	28	40	48	59	114	71	360
Total:	750	909	1,127	2,424	2,360	2142	9712

Improvement District # 6

Graffiti Abatement

Before and After Pictures

November 4, 2013

Private Property

1627 Westheimer

before

9521



after



1627 Westheimer

before

9522



after



1627 Westheimer

before

9523



after



1629 Westheimer

before

9524



after



1629 Westheimer

before

9525



after



1629 Westheimer

before

9526



after



1629 Westheimer

before

9527



after



1629 Westheimer

before

9528



after



1629 Westheimer

before

9529



after



1629 Westheimer

before

9530



after



1641 Westheimer

before

9531



after



1641 Westheimer

before

9532



after



1641 Westheimer

before

9533



after



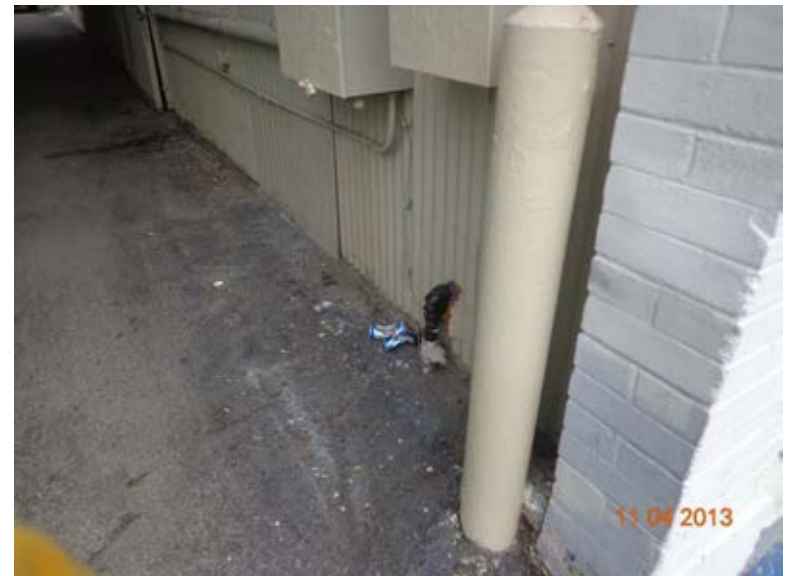
1641 Westheimer

before

9534



after



1641 Westheimer

before

9535



after



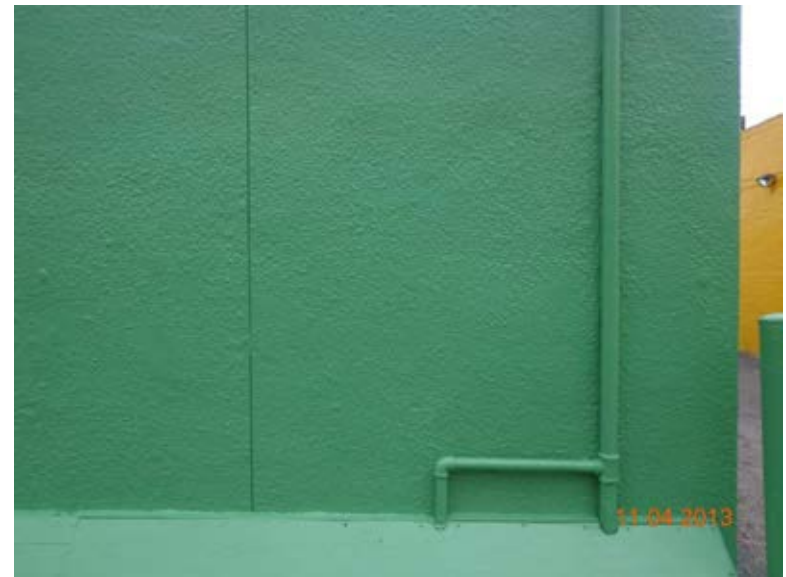
1637 Westheimer

before

9536



after



1637 Westheimer

before

9537



after



1637 Westheimer

before

9538



after



1637 Westheimer

before

9539



after



1637 Westheimer

before

9540



after



Public Property

4614 Montrose

before

9541



after



4900 Montrose

before

9542



after



before

9543

4900 Montrose

after



before

9544

4900 Montrose

after



4900 Montrose

before

9545



after



Montrose at Banks

before

9546



after



4900 Dunlavy

before

9547



after



4900 Dunlavy

before

9548



after



4900 Dunlavy

before

9549



after



4900 Dunlavy

before

9550



after



4900 Dunlavy

before

9551



after



4000 Mandell

before

9552



after



3900 Woodhead

before

9553



after



3900 Woodhead

before

9554



after



before

2200 Waugh

after

9555



before

2200 Waugh

after

9556



before

2200 Waugh

after

9557



before

2200 Waugh

after

9558



before

2300 Yupon

after

9559



Improvement District # 6

Graffiti Abatement

Before and After Pictures

November 7, 2013

Private Property

1627 Westheimer

before

9560



after



1627 Westheimer

before

9561



after



before

2400 Ralph

after

9562



before

4310 Dunlavy

after

9563



Public Property

3300 Mandell

before

9564



after



3300 Mandell

before

9565



after



1800 Fairview

before

9566



after



1800 Westheimer

before

9567



after



2600 Woodhead

before

9568



after



Improvement District # 6

Graffiti Abatement

Before and After Pictures

November 9, 2013

Private Property

before

4300 Kyle

after

9569



Public Property

before

9570

1100 W Alabama

after



before

9571

1100 W Alabama

after



before

9572

3113 Shepherd

after



before

9573

900 Sul Ross

after



before

900 Sul Ross

after

9574



before

900 Hawthorne

after

9575



1500 Fairview

before

9576



after



3300 Mandell

before

9577



after



3300 Mandell

before

9578



after



3300 Mandell

before

9579



after



3400 Mandell

before

9580



after



4500 Woodhead

before

9581



after



before

9582

4500 Woodhead

after



before

9583

1000 Richmond

after



1000 Richmond

before

9584



after



1000 Richmond

before

9585



after



1000 Richmond

before

9586



after



3600 Montrose

before

9587



after



Improvement District # 6

Graffiti Abatement

Before and After Pictures

November 11, 2013

Public Property

4900 Montrose

before

9588



after



4800 Yoakum

before

9589



after



1500 Bissonnet

before

9590



after



1900 Bissonnet

before

9591



after



1100 Barkdull

before

9592



after



4700 Mt Vernon

before

9593



after



before

9594

1900 Commonwealth

after



before

9595

1800 Commonwealth

after



1200 Hawthorne

before

9596



after



1200 Hawthorne

before

9597



after



1300 Westheimer

before

9598



after



3400 Graustark

before

9599



after



before

315 Alabama

after

9600

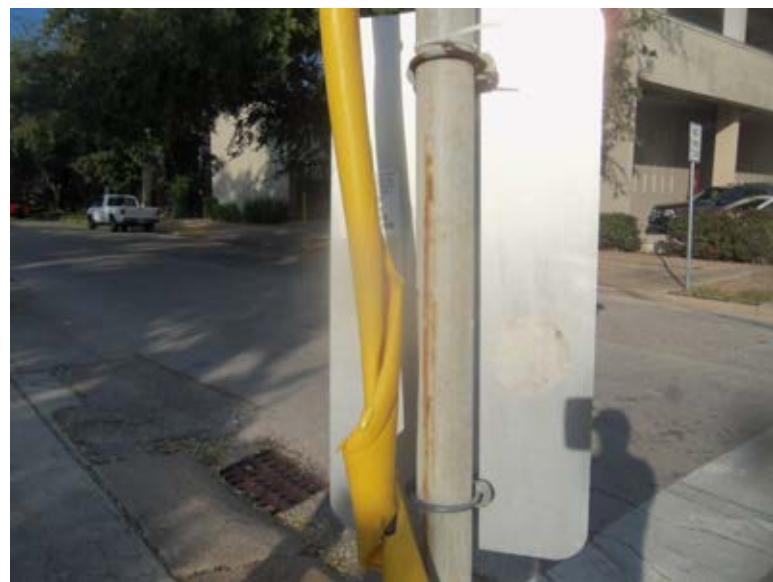


before

300 Alabama

after

9601



before

300 Alabama

after

9602



before

1912 W Gray

after

9603



before

800 W Gray

after



Improvement District # 6

Graffiti Abatement

Before and After Pictures

November 14, 2013

Private Property

before

2003 Harold

after

9605



before

1609 Westheimer

after

9606



Public Property

416 Westheimer

before

9607



after



320 Westheimer

before

9608



after



320 Westheimer

before

9609



after



320 Westheimer

before

9610



after



4800 Montrose

before

9611



after



4800 Banks

before

9612



after



4600 Graustark

before

9613



after



4415 Yupon

before

9614



after



2901 S Shepherd

before

9615



after



2000 Harold

before

9616



after



before

2000 Harold

after

9617



before

1600 Nevada

after

9618



1500 Westheimer

before

9619



after



1609 Westheimer

before

9620



after



1613 Westheimer

before

9621



after



1416 Welch

before

9622



after



before

1700 Waugh

after

9623



before

1700 Van Buren

after

9624



before

1500 Haddon

after

9625



before

1500 Haddon

after

9626



before

9627

1700 Commonwealth

after



before

9628

1500 Haddon

after



Improvement District # 6

Graffiti Abatement

Before and After Pictures

November 18, 2013

Private Property

2200 Montrose

before

9629



after



1739 Richmond

before

9630



after



Public Property

before

2100 Taft

after

9631



before

223 Drew

after

9632



before

9633

2001 Montrose

after



before

9634

2001 Montrose

after



2200 Montrose

before

9635



after



1000 Westheimer

before

9636



after



before

2700 Lincoln

after

9637



before

2700 Yoakum

after

9638



417 Westheimer

before

9639



after



417 Westheimer

before

9640



after



1739 Richmond

before

9641



after



1739 Richmond

before

9642



after



1400 Richmond

before

9643



after



2700 Commonwealth

before

9644



after



1301 Westheimer

before

9645



after



1100 California

before

9646



after



Dumpsters

before

9647

417 Westheimer

after



before

9648

1613 Richmond

after



Improvement District # 6

Graffiti Abatement

Before and After Pictures

November 21, 2013

Private Property

1433 Hawthorne

before

9649



after



2200 Van Buren

before

9650



after



Public Property

1433 Hawthorne

before

9651



after



1611 Westheimer

before

9652



after



2704 Ridgewood

before

9653



after



1600 Missouri

before

9654



after



3300 Mandell

before

9655



after



3300 Mandell

before

9656



after



3300 Mandell

before

9657



after



2100 Montrose

before

9658



after



before

2200 Park

after

9659



before

2200 Park

after

9660



2400 Dunlavy

before

9661



after



2400 Dunlavy

before

9662



after



2200 Van Buren

before

9663



after



2200 Van Buren

before

9664



after



before

9665

Dunlavy at Dallas

after



before

9666

1500 Haddon

after



1000 Westheimer

before

9667



after



Dumpsters

1425 Westheimer

before

9668



after



Improvement District # 6

Graffiti Abatement

Before and After Pictures

November 25, 2013

Public Property

before

200 Avondale

after

9669



before

100 Hyde Park

after

9670



before

9671

200 Westheimer

after

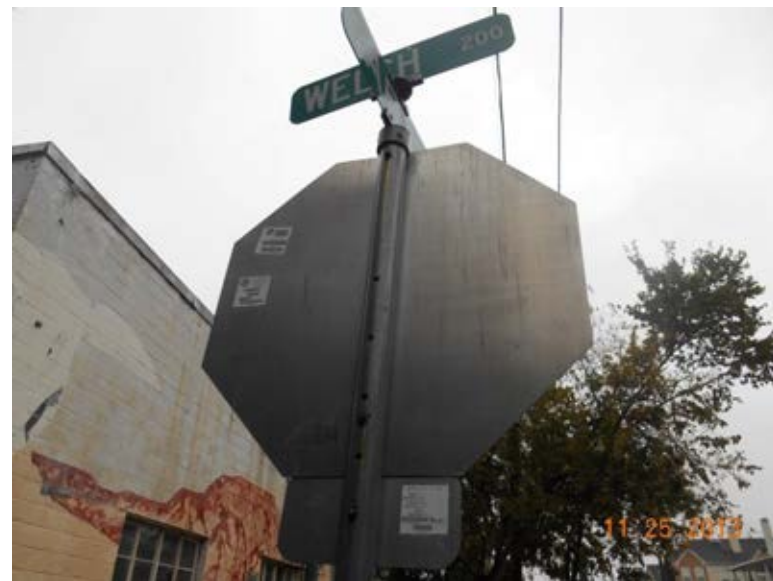


before

9672

200 Welch

after



before

300 Pacific

after

9673



before

300 Pacific

after

9674



before

9675

300 Westheimer

after



before

9676

300 Westheimer

after



528 Westheimer

before

9677



after



700 Hyde Park

before

9678



after



before

700 Frago

after

9679



before

2500 Grant

after

9680



800 Hyde Park

before

9681



after



800 Hyde Park

before

9682



after



before

9683

1900 Montrose

after



before

9684

1300 Cleveland

after



before

9685

1900 Grant

after



before

9686

1900 Grant

after



1400 Cleveland

before

9687



after



1000 W Dallas

before

9688



after



1000 W Dallas

before

9689



after



1000 W Dallas

before

9690



after



1000 W Dallas

before

9691



after



1000 W Dallas

before

9692



after



before
9693

800 W Dallas

after



before
9694

800 W Dallas

after



before

800 W Dallas

after

9695



before

1900 W Dallas

after

9696



before

900 W Dallas

after

9697

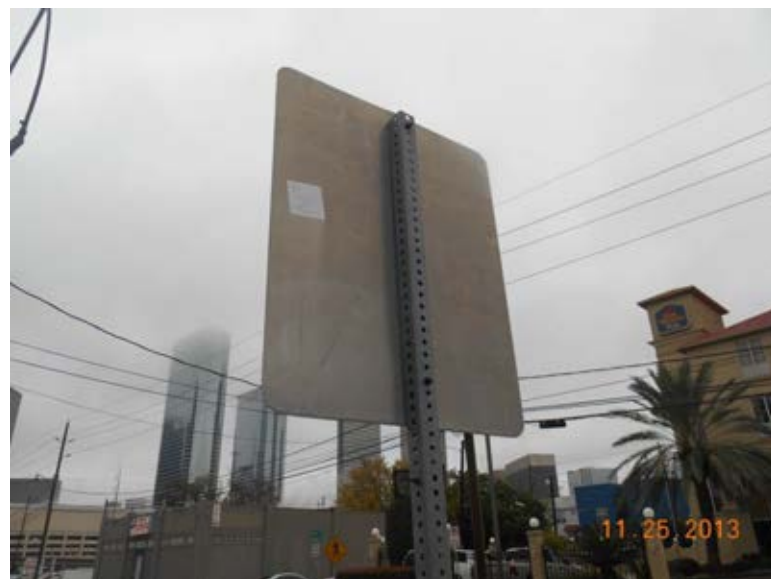


before

900 W Dallas

after

9698



1100 W Dallas

before

9699



after



1100 W Dallas

before

9700



after



1100 W Dallas

before

9701



after



1100 W Dallas

before

9702



after



1100 W Dallas

before

9703



after



1100 W Dallas

before

9704



after



1300 W Dallas

before

9705



after



1300 W Dallas

before

9706



after



2900 W Dallas

before

9707



after



2900 W Dallas

before

9708



after



before

1300 W Clay

after

9709



before

2700 W Dallas

after

9710



before

9711

3700 Mandell

after



before

9712

1400 Richmond

after

