

Montrose District



Graffiti Abatement Reports

November 2012

Montrose District

Monthly Graffiti Abatement Reports 2012

Abated	Jan	Feb	Mar	Apr	May	June	July	Aug	Sept	Oct	Nov	Dec	2012 Total
Business Property	74	42	47	41	37	56	35	28	42	55	23		480
Public Property	105	135	182	158	134	124	168	129	133	131	199		1598
Trash Dumpsters	7	10	8	15	12	9	9	7	7	9	8		101
Total:	186	187	237	214	183	189	212	164	182	195	222		2,179

Graffiti Abatement Reports Totals 2008 - 2012						
	2008	2009	2010	2011	2012	Totals
Abated						
Business Property	184	98	144	563	480	1469
Public Property	538	771	935	1802	1598	5644
Trash Dumpsters	28	40	48	59	101	276
Total:	750	909	1,127	2,424	2,179	7,389

Improvement District # 6

Graffiti Abatement

Before and After Pictures

November 1, 2012

Business Property

4400 Grausstark

before

7160



after



4400 Grausstark

before

7161



after



Public Property

600 Hawthorne

before

7162



after



200 Hyde Park

before

7163



after



before

2401 Taft

after

7164



before

Southwest Fwy and Grausstark

after

7165



Southwest Fwy and Grausstark

before

7166



after



Southwest Fwy and Grausstark

before

7167



after



before

7168

Southwest Fwy and Grausstark

after



before

7169

Southwest Fwy and Grausstark

after



Southwest Fwy and Grausstark

before

7170



after



Southwest Fwy and Grausstark

before

7171



after



Southwest Fwy and Grausstark

before

7172



after



Southwest Fwy and Grausstark

before

7173



after



before

7174

1100 Kenwood

after



before

7175

1100 Kenwood

after



before

7176

1100 Kenwood

after



before

7177

1100 Kenwood

after



4500 Mt. Vernon

before

7178



after



1100 Kenwood

before

7179



after



before

7180



4500 Mt. Vernon

after



before

7181



4400 Grausstark

after



4400 Grausstark

before

7182



after



1200 Richmond

before

7183



after



1200 Richmond

before

7184



after



Improvement District # 6

Graffiti Abatement

Before and After Pictures

November 5, 2012

Business Property

before

1918 Taft

after

7185



Public Property

before

3301 Yupon

after

7186



before

1003 Richmond

after

7187



322 Westheimer

before
7188



after



322 Westheimer

before
7189



after



before

2344 Mason

after

7190



before

2344 Mason

after

7191



403 Westheimer

before

7192



after



2304 Mason

before

7193



after



before

2110 Mason

after

7194



before

2016 Welch

after

7195



before

2016 Welch

after

7196



before

2200 Mason

after

7197



before

214 Fairview

after

7198



before

214 Fairview

after

7199



before

200 Fairview

after

7200



before

200 Fairview

after

7201



Taft and Fairview

before

7202



after



Taft and Fairview

before

7203



after



before

2300 Taft

after

7204



before

Taft and Fairview

after

7205



before

2300 Taft

after

7206



before

200 Fairview

after

7207



before

300 Fairview

after



Dumpsters

before

2110 Mason

after

7209



before

1300 Peden

after

7210



Improvement District # 6

Graffiti Abatement

Before and After Pictures

November 8, 2012

Business Property

1402 Westheimer

before

7211



after



225 Avondale

before

7212



after



Public Property

1402 Westheimer

before

7213



after



1500 Westheimer

before

7214



after



1800 California

before

7215



after



1705 California

before

7216



after



before

1532 Peden

after

7217



before

2000 Welch

after

7218



before

1954 Welch

after

7219



before

2001 Indiana – site abated, image not available

after

7220



before

2300 Hazard

after

7221



before

1900 Fairview

after

7222



1900 Fairview

before

7223



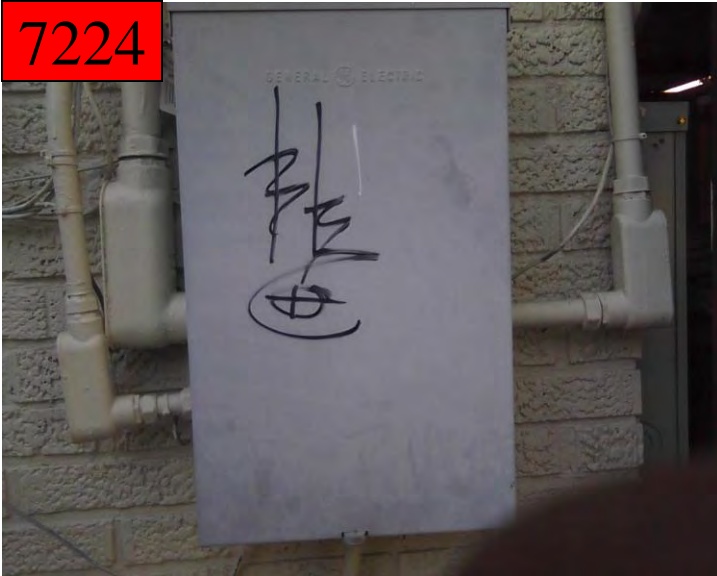
after



2320 Hazard

before

7224



after



before

2520 Taft

after



Dumpsters

before

400 Fairview

after

7226



before

402 Fairview

after

7227



1400 Westheimer

before

7228



after



1400 Westheimer

before

7229



after



Improvement District # 6

Graffiti Abatement

Before and After Pictures

November 12, 2012

Public Property

3300 Whitney

before

7230



after



700 Hawthorne

before

7231



after



3500 Stanford

before

7232



after



1500 Harold

before

7233



after



3400 Mulberry

before

7234



after



1400 Hawthorne

before

7235



after



before

7236

3300 Mulberry

after



before

7237

2400 Mandell

after



before

7238

2000 Commonwealth

after



before

7239

2100 Commonwealth

after



before

7240

2000 Montrose

after



before

7241

2100 Crocker

after



before

700 Welch

after

7242



before

800 Willard

after

7243



before

7244



1700 Commonwealth

after



before

7245



1700 Commonwealth

after



before

1800 Welch

after

7246



before

1900 Dunlavy

after

7247



before

1800 Welch

after

7248



before

2000 Yupon

after

7249



before

2000 Yupon

after

7250



before

1500 Welch

after

7251



before

2000 Waugh

after

7252



Improvement District # 6

Graffiti Abatement

Before and After Pictures

November 15, 2012

Business Property

before

1505 Haddon

after

7253



before

1505 Haddon

after

7254



Public Property

before

3314 Taft

after

7255



before

3314 Taft

after

7256



2100 Whitney

before

7257



after



1500 Stanford

before

7258



after



1500 Stanford

before

7259



after



700 Gray

before

7260



after



1500 Stanford

before

7261



after



1400 Stanford

before

7262



after



1400 Stanford

before

7263



after



1400 Stanford

before

7264



after



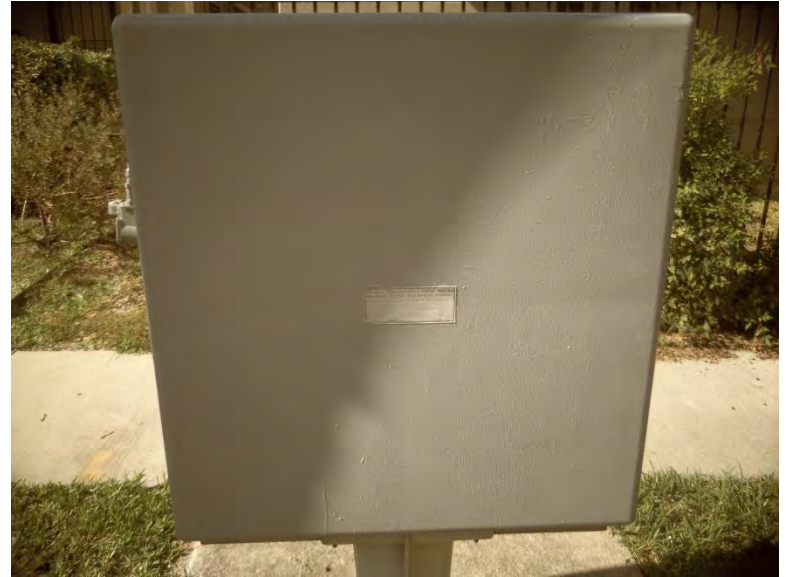
1400 Stanford

before

7265



after



1400 Stanford

before

7266



after



before

600 Polk

after

7267



before

1100 Stanford

after

7268



2400 Windsor

before

7269



after



4000 Montrose

before

7270



after



3900 Grausstark

before

7271



after



2400 Huldry

before

7272



after



2000 Fairview

before

7273



after



2001 Huldy

before

7274



after



Improvement District # 6

Graffiti Abatement

Before and After Pictures

November 19, 2012

Business Property

3803 Dunlavy

before

7275



after



Public Property

1600 Westheimer

before

7276



after



1600 Westheimer

before

7277



after



1600 Westheimer

before

7278



after



1600 Westheimer

before

7279



after



1600 Westheimer

before

7280



after



1600 Westheimer

before

7281



after



3300 Mandell

before

7282



after



1600 Kipling

before

7283



after



1600 W. Alabama

before

7284



after



1600 W. Alabama

before

7285



after



before

7286



1600 W. Alabama

after



before

7287



1600 W. Alabama

after



1600 W. Alabama

before
7288



after



4400 Mandell

before
7289



after



before

7290

1600 W. Alabama

after



before

7291

1632 W. Alabama

after



1632 W. Alabama

before
7292



after



3900 McDuffie

before
7293



after



before

7294

3900 McDuffie

after



before

7295

3818 McDuffie

after



before

7296

3818 McDuffie

after



before

7297

3818 McDuffie

after



before

7298

3818 McDuffie

after



before

7299

3818 McDuffie

after



before

7300

1900 W. Alabama

after



before

7301

3818 McDuffie

after



before

7302

1900 W. Alabama

after



before

7303

700 Richmond

after



3300 Dunlavy

before

7304



after



3300 Dunlavy

before

7305



after



2700 Dunlavy

before

7306



after



2700 Dunlavy

before

7307



after



Improvement District # 6

Graffiti Abatement

Before and After Pictures

November 20, 2012

Business Property

before

7308

1100 Kenwood

after



Public Property

1100 Kenwood

before

7309



after



2030 Kippling

before

7310



after



before

1252 Peden

after

7311



before

406 W. Gray

after

7312

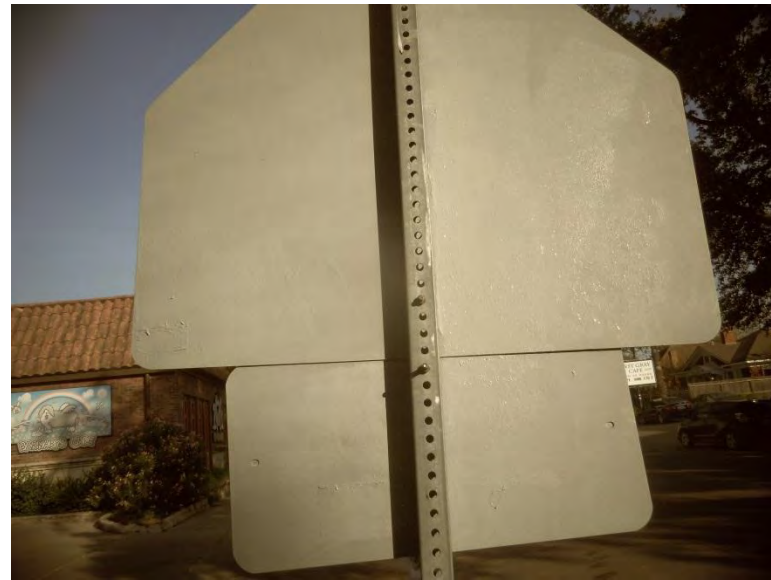


before

414 W. Gray

after

7313



before

414 W. Gray

after

7314



before

500 W. Gray

after

7315



before

514 W. Gray

after

7316



before

514 W. Gray

after

7317



before

1100 Taft

after

7318



Improvement District # 6

Graffiti Abatement

Before and After Pictures

November 26, 2012

Business Property

1320 Westheimer

before

7319



after



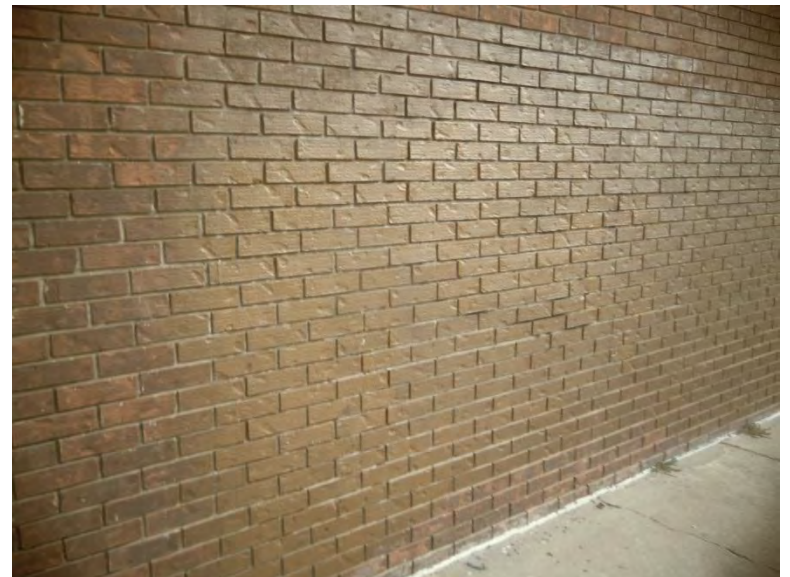
1320 Westheimer

before

7320



after



516 Westheimer

before

7321



after



1400 Hawthorne

before

7322



after



1018 Hawthorne

before

7323



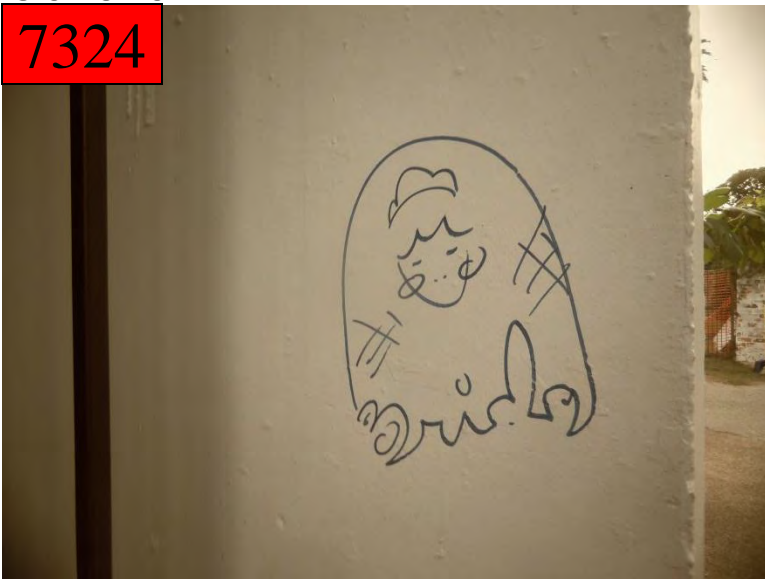
after



1018 Hawthorne

before

7324



after



3400 Montrose

before

7325



after



Public Property

1417 Westheimer

before

7326



after



1417 Westheimer

before

7327



after



1800 Sul Ross

before

7328



after



3818 McDuffie

before

7329



after



3810 McDuffie

before

7330



after



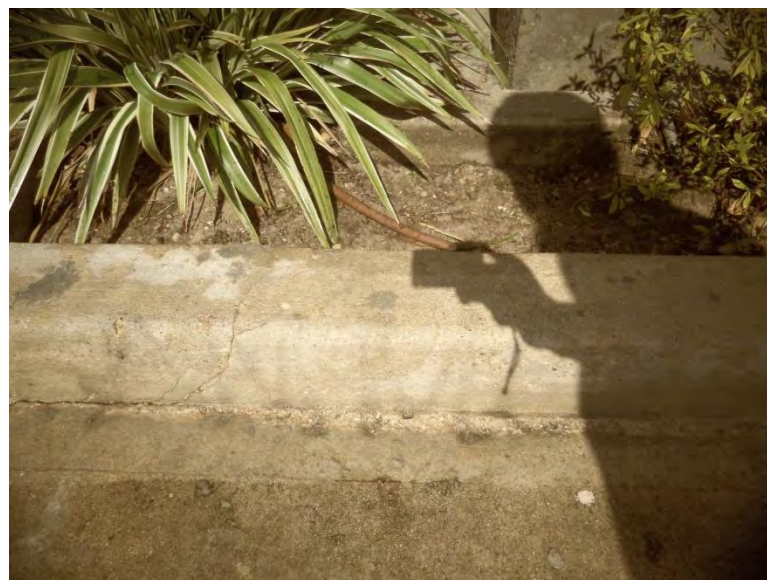
2000 Sul Ross

before

7331



after



2154 California

before

7332



after



2600 Commonwealth

before

7333



after



1400 Westheimer

before

7334



after



1017 Hawthorne

before

7335



after



1017 Hawthorne

before

7336



after



1200 Hawthorne

before

7337



after



before

7338

3400 Montrose

after



before

7339

3400 Montrose

after



Improvement District # 6

Graffiti Abatement

Before and After Pictures

November 29, 2012

Business Property

before

7340

3300 Montrose

after



before

7341

Dunlavy and Westheimer

after



1600 Westheimer

before

7342



after



1600 Westheimer

before

7343



after



Public Property

Mandell and Westheimer

before

7344



after



Mandell and Westheimer

before

7345



after



Mandell and Westheimer

before

7346



after



Mandell and Westheimer

before

7347



after



Mandell and Westheimer

before

7348



after



Mandell and Westheimer

before

7349



after



Mandell and Westheimer

before

7350



after



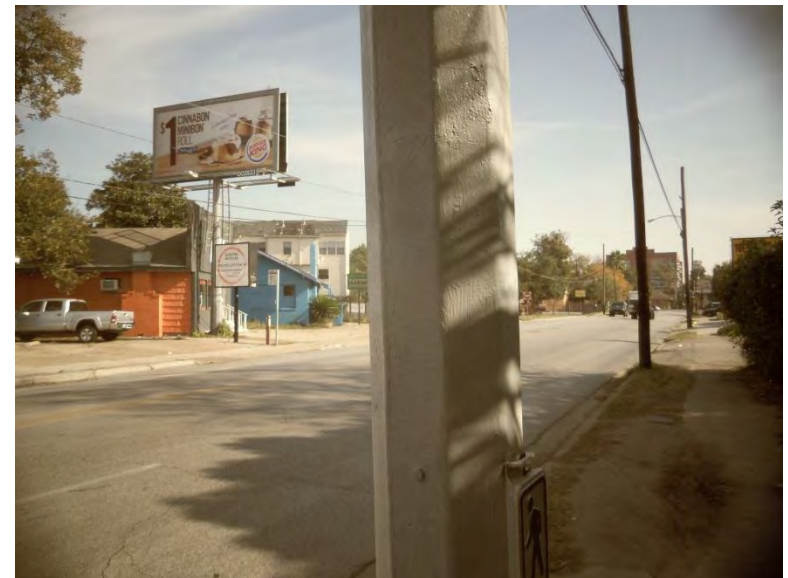
Mandell and Westheimer

before

7351



after



before **Mandell and Westheimer – site abated, image not available** after

7352



Mandell and Westheimer

before

7353



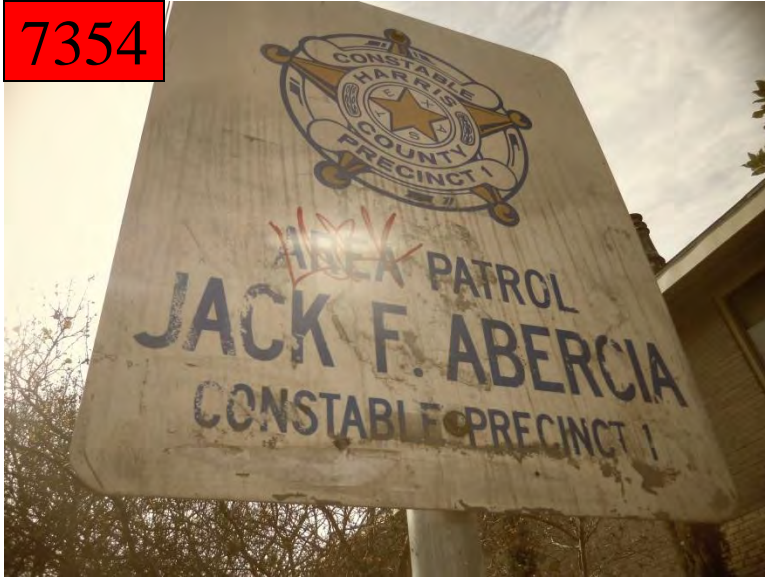
after



Mandell and Westheimer

before

7354



after



Mandell and Westheimer

before

7355



after



Mandell and Westheimer

before

7356



after



Mandell and Westheimer

before

7357



after



Mandell and Westheimer

before

7358



after



Dunlavy and Westheimer

before

7359



after



Dunlavy and Westheimer

before

7360



after



Dunlavy and Westheimer

before

7361



after



Dunlavy and Westheimer

before

7362



after



Dunlavy and Westheimer

before

7363



after



Dunlavy and Westheimer

before

7364



after



before

7365



Dunlavy and Westheimer – site abated, image not available

after

Dunlavy and Westheimer

before

7366



after



Dunlavy and Westheimer

before

7367



after



Dunlavy and Westheimer

before

7368



after



Dunlavy and Westheimer

before

7369



after



2450 Dunlavy

before

7370



after



Improvement District # 6

Graffiti Abatement

Before and After Pictures

November 30, 2012

Business Property

before

2900 Taft

after

7371



before

2900 Taft

after

7372



before

2900 Taft

after

7373



Public Property

before

1200 Taft

after

7374



1500 Stanford

before

after

7375



before

614 W. Gray

after

7376



before

1400 Stanford

after

7377



1400 Stanford

before

7378



after



2500 Hopkins

before

7379



after



before

2600 Taft

after

7380



before

2600 Taft

after

7381



before

2900 Taft

after

7382



before

3300 Taft

after

7383



before

3314 Taft

after

7384



before

3314 Taft

after

7385



before

3314 Taft

after

7386



before

3314 Taft

after

7387



Dumpsters

before

614 W. Gray

after

7388



before

614 W. Gray

after

7389

