

Montrose District



Graffiti Abatement Reports

August 2014

Montrose District

Monthly Graffiti Abatement Reports 2014

Abated	Jan	Feb	Mar	Apr	May	June	July	Aug	Sept	Oct	Nov	Dec	2013 Total
Business Property	66	41	48	71	58	46	67	90					487
Public Property	136	177	167	116	197	158	260	246					1457
Trash Dumpsters	3	6	10	4	12	6	3	3					47
Total:	205	224	225	191	267	210	330	339					1,991

Graffiti Abatement Reports Totals 2008 - 2014								
	2008	2009	2010	2011	2012	2013	2014	Totals
Abated								
Business Property	184	98	144	563	522	467	487	2465
Public Property	538	771	935	1,802	1,724	1839	1457	9066
Trash Dumpsters	28	40	48	59	114	84	47	420
Total:	750	909	1,127	2,424	2,360	2,390	1,991	11,951

Improvement District # 6

Graffiti Abatement

Before and After Pictures

August 4, 2014

Private Property

before

11613

502 Alabama

after



before

11614

502 Alabama

after



before

11615

502 Alabama

after



before

11616

502 Alabama

after



before

11617



502 Alabama

after



before

11618



502 Alabama

after



before

11619

502 Alabama

after



before

11620

502 Alabama

after



before

11621

502 Alabama

after



before

11622

502 Alabama

after



before

11623

3300 Taft

after



before

11624

3300 Taft

after



before

11625

3300 Taft

after



before

11626

3300 Taft

after



before

11627

3300 Taft

after



before

11628

3300 Taft

after



before

11629

3300 Taft

after



before

11630

3300 Taft

after



before

11631

3300 Taft

after



before

11632

3300 Taft

after



before

11633



3300 Taft

after



before

11634



3300 Taft

after



1700 Westheimer

before

11635



after



2608 Dunlavy

before

11636



after



2608 Dunlavy

before

11637



after



2608 Dunlavy

before

11638



after



1658 Westheimer

before

11639



after



1657 Westheimer

before

11640



after



1657 Westheimer

before

11641



after



1657 Westheimer

before

11642



after



1657 Westheimer

before

11643



after



1657 Westheimer

before

11644



after



1657 Westheimer

before

11645



after



1657 Westheimer

before

11646



after



Public Property

500 Hawthorne

before

11647



after



500 Hawthorne

before

11648



after



before

11649



3300 Taft

after



before

11650



3300 Taft

after



before

11651

3300 Taft

after



before

11652

3300 Taft

after



before

11653

3300 Taft

after



before

11654

3300 Taft

after



before

11655



3300 Taft

after



before

11656



3300 Taft

after



before

11657

3300 Taft

after



before

11658

3300 Taft

after



before

11659

3300 Taft

after



before

11660

3300 Taft

after



1500 Hawthorne

before

11661



after



1500 Hawthorne

before

11662



after



1800 Westheimer

before

11663



after



1800 Westheimer

before

11664



after



1700 Westheimer

before

11665



after



1700 Westheimer

before

11666



after



1700 Westheimer

before

11667



after



1700 Westheimer

before

11668



after



1700 Westheimer

before

11669



after



1700 Westheimer

before

11670



after

No
After
Image
Available

1700 Westheimer

before

11671



after



1700 Westheimer

before

11672



after



1600 Westheimer

before

11673



after



1600 Westheimer

before

11674



after



1600 Westheimer

before

11675



after



1600 Westheimer

before

11676



after



1600 Westheimer

before

11677



after



1600 Westheimer

before

11678



after



3300 Mandell

before

11679



after



3300 Mandell

before

11680



after



2400 Dunlavy

before

11681



after



2400 Dunlavy

before

11682



after



2400 Dunlavy

before

11683



after



2400 Dunlavy

before

11684



after



2400 Dunlavy

before

11685



after



2400 Dunlavy

before

11686



after



Improvement District # 6

Graffiti Abatement

Before and After Pictures

August 8, 2014

Private Property

1637 Westheimer

before

11687



after



1637 Westheimer

before

11688



after



1400 Richmond

before

11689



after



1601 Richmond

before

11690



after



1601 Richmond

before

11691



after



1601 Richmond

before

11692



after



1601 Richmond

before

11693



after



1601 Richmond

before

11694



after



1601 Richmond

before

11695



after



200 Westheimer

before

11696



after



200 Westheimer

before

11697



after



Public Property

2300 Dunlavy

before

11698



after



2300 Dunlavy

before

11699



after



2300 Dunlavy

before

11700



after



2300 Dunlavy

before

11701



after



2300 Dunlavy

before

11702



after



2200 Dunlavy

before

11703



after



2200 Dunlavy

before

11704



after



2200 Dunlavy

before

11705



after



2200 Dunlavy

before

11706



after



2200 Dunlavy

before

11707



after



2400 Dunlavy

before

11708



after



2400 Dunlavy

before

11709



after



1600 W Alabama

before

11710



after



1600 W Alabama

before

11711



after



1000 Richmond

before

11712



after



1000 Richmond

before

11713



after



1300 Richmond

before

11714



after



1601 Richmond

before

11715



after



before

11716

4200 Hazard

after



before

11717

600 W Alabama

after



600 W Alabama

before

11718



after



3800 Garrett

before

11719



after



2800 Whitney

before

11720



after



2800 Whitney

before

11721



after



2800 Whitney

before

11722



after



2800 Whitney

before

11723



after



1200 Fairview

before

11724



after



1200 Fairview

before

11725



after



1900 Fairview

before

11726



after



4500 Woodhead

before

11727



after



Dumpsters

1601 Richmond

before

11728



after



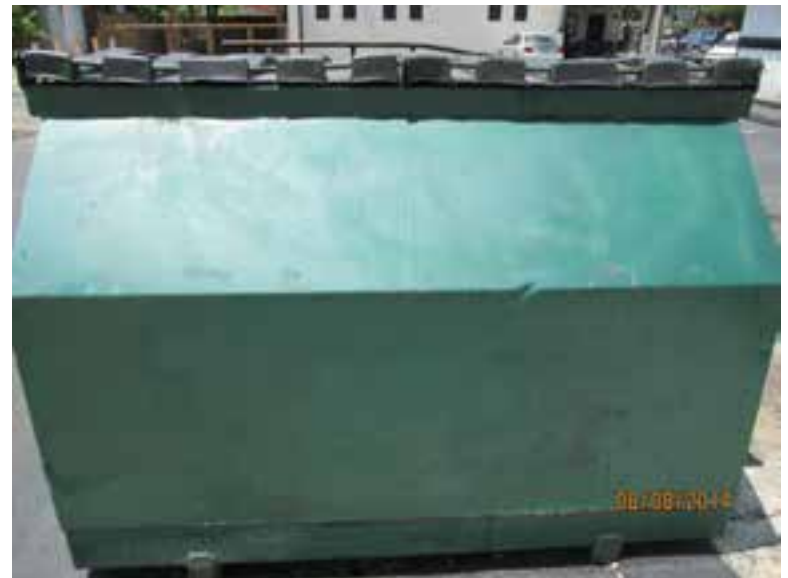
1601 Richmond

before

11729



after



Improvement District # 6

Graffiti Abatement

Before and After Pictures

August 12, 2014

Private Property

1641 Westheimer

before

11730



after



1641 Westheimer

before

11731



after



1600 Westheimer

before

11732



after



1627 Westheimer

before

11733



after



before

11734

2700 Commonwealth

after



before

11735

2700 Commonwealth

after



before

3300 Roseland

after

11736



before

3300 Roseland

after

11737



before

1100 W Drew

after

11738



before

1100 W Drew

after

11739



1100 W Drew

before

11740



after



Public Property

1600 Westheimer

before

11741



after



1600 Westheimer

before

11742



after



1600 Westheimer

before

11743



after



1600 Westheimer

before

11744



after



1600 Westheimer

before

11745



after



1600 Westheimer

before

11746



after



1600 Westheimer

before

11747



after



1600 Westheimer

before

11748



after



1600 Westheimer

before

11749



after



1600 Westheimer

before

11750



after



1600 Westheimer

before

11751



after



1600 Westheimer

before

11752



after



before

11753

2700 Montrose

after



before

11754

2700 Grant

after



1000 Westheimer

before

11755



after



1000 Westheimer

before

11756



after



before

11757



2400 Waugh

after



before

11758



2400 Waugh

after



before

11759

2700 Commonwealth

after



before

11760

2700 Commonwealth

after



1300 Westheimer

before

11761



after



1300 Westheimer

before

11762



after



1300 Westheimer

before

11763



after



4700 Montrose

before

11764



after



before

11765

1100 Banks

after



before

11766

1100 Banks

after



before

11767



1100 Banks

after



before

11768



1100 Banks

after



before

11769

1100 Banks

after



before

11770

1100 Banks

after



before

11771



1100 Banks

after



before

11772



1100 Banks

after



before

11773

1100 Autrey

after



before

11774

4700 Graustark

after



Improvement District # 6

Graffiti Abatement

Before and After Pictures

August 14, 2014

Private Property

1851 Richmond

before

11775



after



1851 Richmond

before

11776



after



1800 Richmond

before

11777



after



1800 Richmond

before

11778



after



before

2600 Commonwealth

after

11779



before

500 Westheimer

after

11780



Public Property

1800 Richmond

before

11781



after



1800 Richmond

before

11782



after



1800 Richmond

before

11783



after



1800 Richmond

before

11784



after



1800 Richmond

before

11785



after



1800 Richmond

before

11786



after



1800 Richmond

before

11787



after



1800 Richmond

before

11788



after



1800 Richmond

before

11789



after



1800 Richmond

before

11790



after



1800 W Alabama

before

11791



after



1800 W Alabama

before

11792



after



3800 Dunlavy

before

11793



after



2100 Richmond

before

11794



after



2100 Richmond

before

11795



after



2100 Richmond

before

11796



after



3800 McDuffie

before

11797



after



3800 McDuffie

before

11798



after



3800 McDuffie

before

11799



after



3800 McDuffie

before

11800



after



3000 S Shepherd

before

11801



after



3000 S Shepherd

before

11802



after



before

2500 Commonwealth

after

11803



before

2500 Commonwealth

after

11804



before

2500 Commonwealth

after

11805



before

2500 Commonwealth

after

11806



before

11807

2500 Commonwealth

after



before

11808

2500 Commonwealth

after



1200 Westheimer

before

11809



after



1200 Westheimer

before

11810



after



500 Westheimer

before

11811



after



500 Westheimer

before

11812



after



2800 Stanford

before

11813



after



2800 Stanford

before

11814



after



before

11815

700 Pacific

after



before

11816

700 Pacific

after



before

11817

2700 Taft

after



before

11818

2700 Taft

after



before

11819

2100 Taft

after



before

11820

500 Willard

after



Improvement District # 6

Graffiti Abatement

Before and After Pictures

August 18, 2014

Private Property

1214 Westheimer

before

11821



after



1216 Westheimer

before

11822



after



1305 Westheimer

before

11823



after



1000 Richmond

before

11824



after



503 Westheimer

before

11825



after



503 Westheimer

before

11826



after



503 Westheimer

before

11827



after



Public Property

before

1200 Montrose

after

11828



before

3600 S Shepherd

after

11829



3600 S Shepherd

before

11830



after



3600 S Shepherd

before

11831



after



3600 S Shepherd

before

11832



after



1300 Westheimer

before

11833



after



1200 Westheimer

before

11834



after



1300 Westheimer

before

11835



after



1200 Westheimer

before

11836



after



1200 Westheimer

before

11837



after



1200 Westheimer

before

11838



after



1200 Westheimer

before

11839



after



1300 Westheimer

before

11840



after



1300 Westheimer

before

11841



after



1200 Westheimer

before

11842



after



1200 Westheimer

before

11843



after



1300 Westheimer

before

11844



after



1300 Westheimer

before

11845



after



1400 Westheimer

before

11846



after



1400 Westheimer

before

11847



after



1400 Westheimer

before

11848



after



1300 Westheimer

before

11849



after



1000 Richmond

before

11850



after



1000 Richmond

before

11851



after



1000 Richmond

before

11852



after



4300 Montrose

before

11853



after



1000 Richmond

before

11854



after



2800 Stanford

before

11855



after



before

11856

500 Lovett

after



before

11857

3314 Taft

after



before
11858

3314 Taft

after



before
11859

3314 Taft

after



before

11860



3600 Garrot

after



before

11861



4219 Greeley

after



before

11862



4219 Greeley

after



before

11863



3900 Jack

after



Improvement District # 6

Graffiti Abatement

Before and After Pictures

August 21, 2014

Private Property

1435 Westheimer

before

11864



after



4007 Bute

before

11865



after



before

11866

3314 Taft

after



before

11867

3314 Taft

after



before
11868

3314 Taft

after



before
11869

200 Westheimer

after



Public Property

before

11870



1400 Harold

after



before

11871



3400 Mulberry

after



3400 Mulberry

before

11872



after



1400 Westheimer

before

11873



after



1400 Westheimer

before

11874



after



1400 Westheimer

before

11875



after



1400 Westheimer

before

11876



after



1400 Westheimer

before

11877



after



3300 Mandell

before
11878



after



1100 Kenwood

before
11879



after



before

11880

1000 Banks

after



before

11881

1000 Banks

after

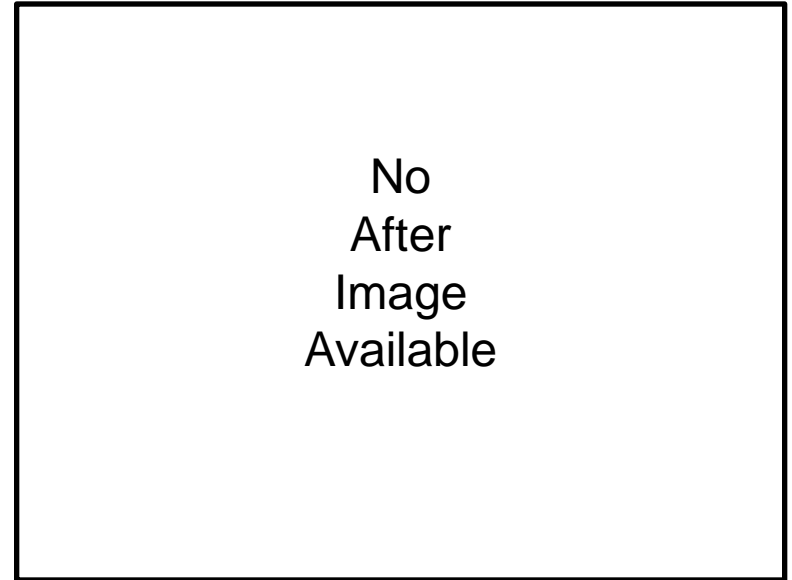


before

11882

400 Branard

after



before

11883

500 Hawthorne

after



before

11884

3300 Taft

after



before

11885

3300 Taft

after



before
11886

900 Fairview

after



before
11887

900 Fairview

after



before

2200 Converse

after

11888



before

1600 Fairview

after

11889



2400 Windsor

before

11890



after



2412 Dunlavy

before

11891



after



Improvement District # 6

Graffiti Abatement

Before and After Pictures

August 25, 2014

Private Property

3815 Montrose

before

11892



after



4005 Montrose

before

11893



after



4005 Montrose

before

11894



after



4005 Montrose

before

11895



after



1637 Westheimer

before

11896



after



1637 Westheimer

before

11897



after



1639 Westheimer

before

11898



after



1639 Westheimer

before

11899



after



1637 Westheimer

before

11900



after



2606 Waugh

before

11901



after



1108 Missouri

before

11902



after



Public Property

700 Hawthorne

before

11903



after



3300 Whitney

before

11904



after



700 Hawthorne

before

11905



after



3314 Taft

before

11906



after



3314 Hawthorne

before

11907



after



3300 Hawthorne

before

11908



after



before

11909

3316 Taft

after



before

11910

400 Hawthorne

after



3300 Mandell

before

11911



after



1600 Westheimer

before

11912



after



3300 Westheimer

before

11913



after



3300 Westheimer

before

11914



after



1600 Westheimer

before

11915



after



1600 Westheimer

before

11916



after



1200 Missouri

before

11917



after



Southwest Fwy at Richmond

before

11918



after



Richmond at Southwest Fwy

before

11919



after



500 Richmond

before

11920



after



Southwest Fwy at Richmond

before

11921



after



before

11922

3400 Garrot



after



Improvement District # 6

Graffiti Abatement

Before and After Pictures

August 28, 2014

Private Property

before
11923

4300 Kyle

after



before
11924

800 Oakley

after



4600 Montrose

before

11925



after



4315 Kyle

before

11926



after



Public Property

4500 Montrose

before

11927



after



4500 Montrose

before

11928



after



4500 Montrose

before

11929



after



4500 Montrose

before

11930



after



4500 Montrose

before

11931



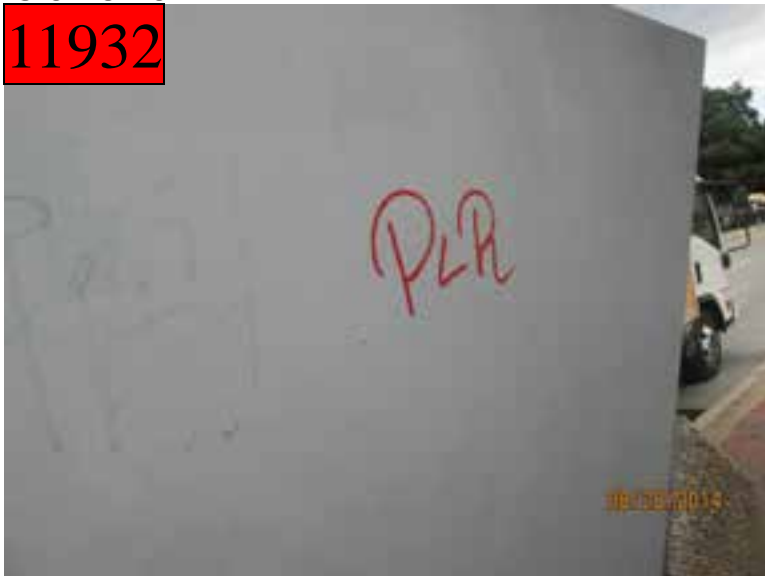
after



4500 Montrose

before

11932



after



900 Woodrow

before

11933



after



900 Woodrow

before

11934



after



900 Woodrow

before

11935



after



3500 Stanford

before

11936



after



3500 Audobon

before

11937



after



600 Harold

before

11938



after



before
11939

400 Westheimer

after



before
11940

400 Westheimer

after



400 Westheimer

before

11941



after



2900 Taft

before

11942



after



300 Westheimer

before

11943



after



2500 Waugh

before

11944



after

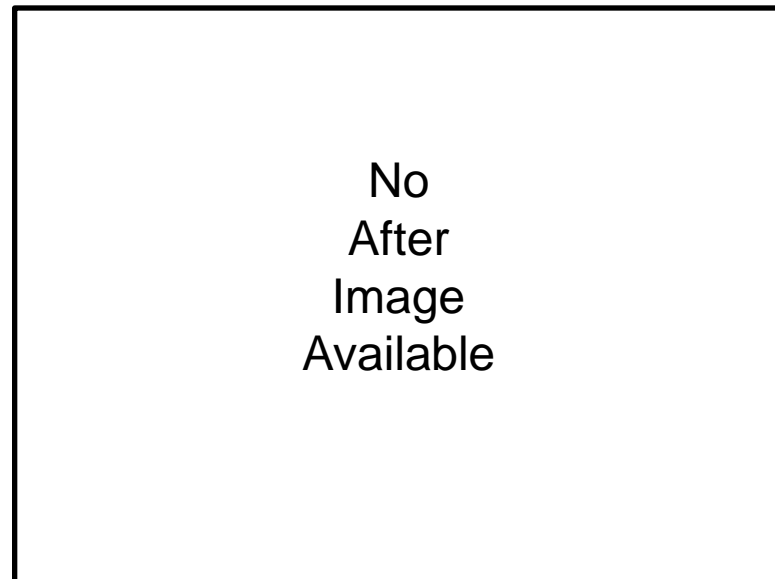


before

11945

2500 Waugh

after



before

11946

1300 Hyde Park

after



1300 Hyde Park

before

11947



after



1500 Welch

before

11948



after



3300 Graustark

before

11949



after



400 Lovett

before

11950



after



Dumpsters

2312 Dunlavy

before

11951



after

