

Montrose District



Graffiti Abatement Reports

August 2012

Montrose District

Monthly Graffiti Abatement Reports 2012

Abated	Jan	Feb	Mar	Apr	May	June	July	Aug	Sept	Oct	Nov	Dec	2012 Total
Business Property	74	42	47	41	37	56							297
Public Property	105	135	182	158	134	124							838
Trash Dumpsters	7	10	8	15	12	9							61
Total:	186	187	237	214	183	189							1196

Graffiti Abatement Reports Totals 2008 - 2012						
	2008	2009	2010	2011	2012	Totals
Abated						
Business Property	184	98	144	563	297	1286
Public Property	538	771	935	1802	838	4884
Trash Dumpsters	28	40	48	59	61	236
Total:	750	909	1,127	2,424	1196	6,406

Improvement District # 6

Graffiti Abatement

Before and After Pictures

August 2, 2012

Business Property

before

1722 Taft

after

6407



before

1722 Taft

after

6408



before

1722 Taft

after

6409



before

1722 Taft

after

6410



before

1500 Taft

after

6411



before

1022 Westheimer

after

6412



1022 Westheimer

before

6413



after



1022 Westheimer

before

6414



after



1022 Westheimer

before

6415



after



1022 Westheimer

before

6416



after



1022 Westheimer

before

6417



after



1022 Westheimer

before

6418



after



Public Property

before

2300 Taft

after

6419



before

2900 Bagby

after

6420



2100 Stanford

before

6421



after



1700 Missouri

before

6422



after



Dumpsters

before

302 Fairview

after

6423



Improvement District # 6

Graffiti Abatement

Before and After Pictures

August 6, 2012

Public Property

2609 Dunlavy

before

6424



after



2609 Dunlavy

before

6425



after



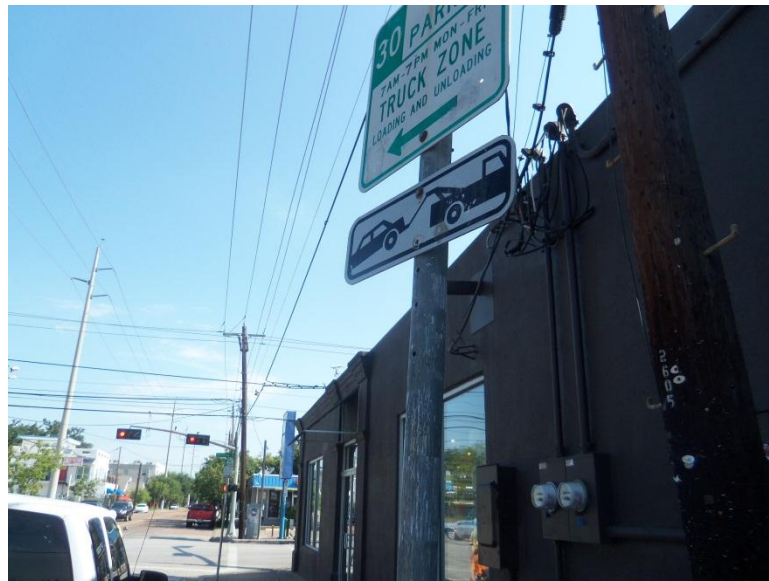
2607 Dunlavy

before

6426



after



2620 Dunlavy

before

6427



after



2621 Dunlavy

before

6428



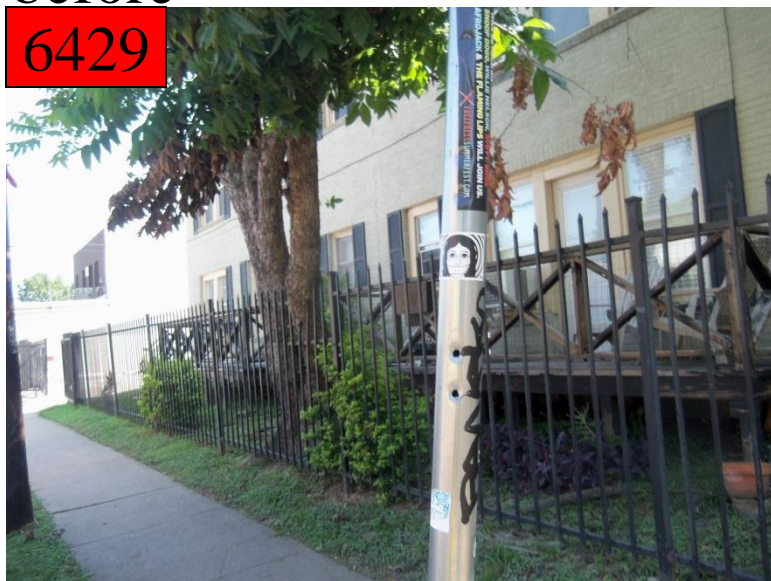
after



2622 Dunlavy

before

6429



after



3300 Dunlavy

before

6430



after



3300 Dunlavy

before

6431



after



2700 Dunlavy

before

6432



after



3512 Dunlavy

before

6433



after



3512 Dunlavy

before

6434



after



3602 Dunlavy

before

6435



after



3712 Dunlavy

before

6436



after



3715 Dunlavy

before

6437



after



before

1500 Welch

after

6438



before

1500 Welch

after

6439



before

1500 Welch

after

6440

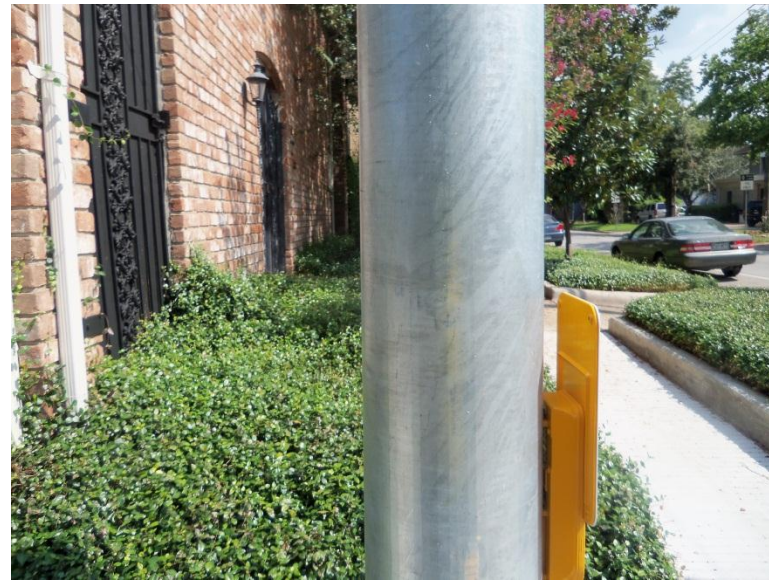


before

1417 Welch

after

6441



1430 Hawthorne

before

6442



after



Improvement District # 6

Graffiti Abatement

Before and After Pictures

August 9, 2012

Business Property

before

6443

1700 Montrose

after

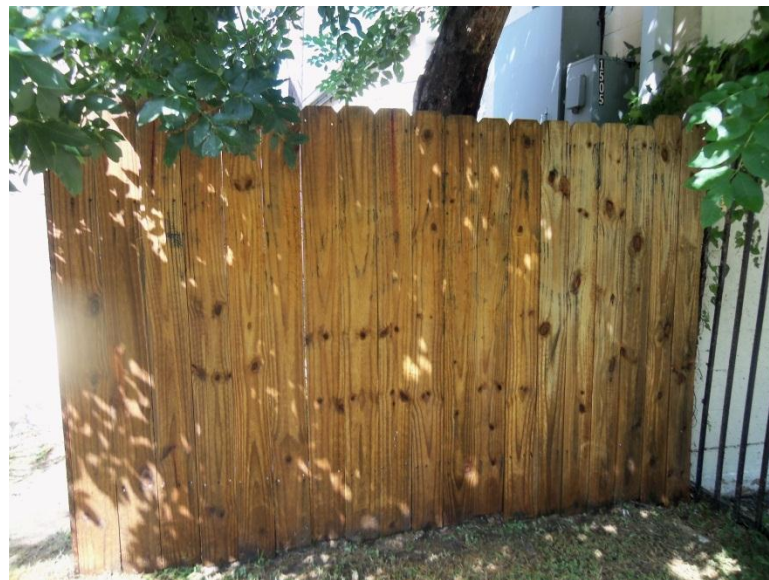


before

6444

1506 Vermont

after



Public Property

before

6445

400 Westheimer

after



before

6446

400 Westheimer

after



before

6447

400 Westheimer

after



before

6448

400 Westheimer

after



before

6449

400 Westheimer

after



before

6450

600 Hawthorne

after



600 Hawthorne

before

6451



after



600 Hawthorne

before

6452



after



before

6453

1700 Montrose

after



before

6454

1600 Westheimer

after



1600 Westheimer

before

6455



after



2700 Yupon

before

6456



after



before

2700 Yupon

after

6457



before

1400 California – site abated, image not available

after

6458



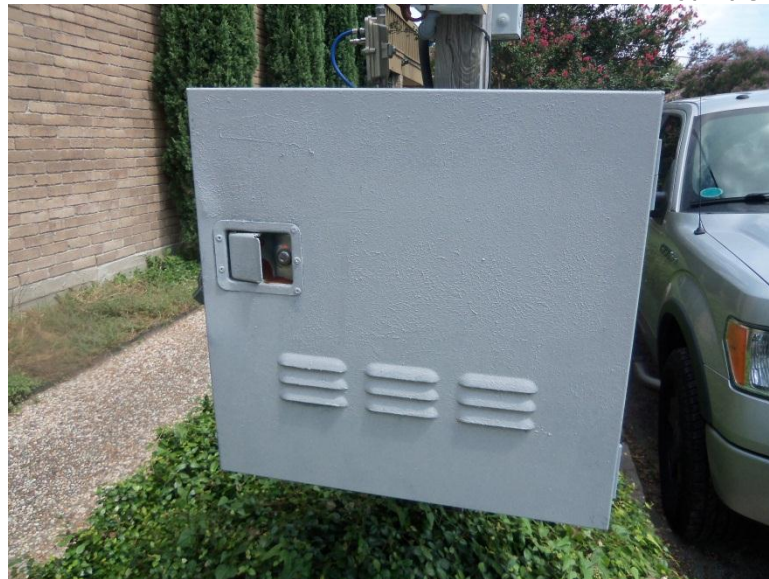
2500 Yoakum

before

6459



after



2500 Yoakum

before

6460



after



before

1100 Lovett

after

6461



before

1417 Richmond

after

6462



1417 Richmond

before

6463



after



4400 Mandell

before

6464



after



4700 Dunlavy

before

6465



after



4700 Dunlavy

before

6466



after



4700 Dunlavy

before

6467



after



4700 Dunlavy

before

6468



after



4300 Graustark

before

6469



after



4300 Graustark

before

6470



after



4300 Graustark

before

6471



after



3700 Stanford

before

6472



after



3700 Stanford

before

6473



after



1900 Sul Ross

before

6474



after



1900 Sul Ross

before

6475



after



1900 Sul Ross

before

6476



after



1900 Sul Ross

before

6477



after



Improvement District # 6

Graffiti Abatement

Before and After Pictures

August 13, 2012

Business Property

4301 Mandell

before

6478



after



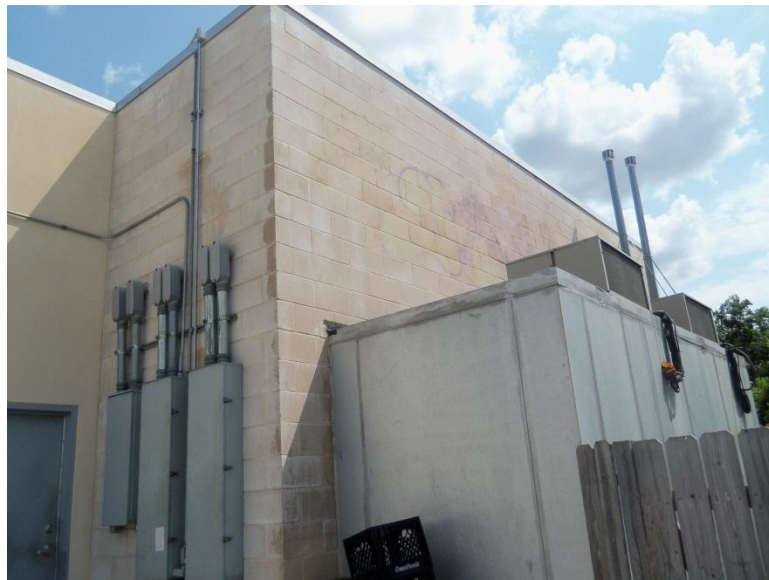
318 Tuam

before

6479



after



Public Property

before

4000 Hazard

after

6480



before

2300 Van Buren

after

6481



1300 Fairview

before

6482



after



700 Pacific

before

6483



after



2600 Whitney

before

6484



after



2700 Whitney

before

6485



after



before

3314 Taft

after

6486



Dumpsters

1429 Westheimer

before

6487



after



Improvement District # 6

Graffiti Abatement

Before and After Pictures

August 17, 2012

Business Property

3400 Stanford

before

6488



after



Public Property

3800 Dunlavy

before

6489



after



500 W. Alabama

before

6490



after



before

6491

600 W. Alabama

after



before

6492

600 W. Alabama

after



before

3900 Bute

after

6493



before

3900 Garrett

after

6494



before

700 Sul Ross

after

6495



before

3000 Greeley

after

6496



before

1500 Taft

after

6497



before

2000 Harold

after

6498



4600 Dunlavy

before

6499



after



3900 Montrose

before

6500



after



4600 Mandell

before

6501



after



4600 Mandell

before

6502



after



600 Hawthorne

before

6503



after



800 W. Clay

before

6504



after



before

800 W. Clay

after

6505



Improvement District # 6

Graffiti Abatement

Before and After Pictures

August 23, 2012

Public Property

311 Westheimer

before

6506



after



534 Westheimer

before

6507



after



534 Westheimer

before

6508



after



607 W. Gray

before

6509



after



Dumpster

before

6510

417 Westheimer

after



before

6511

417 Westheimer

after



Improvement District # 6

Graffiti Abatement

Before and After Pictures

August 24, 2012

Business Property

before

2409 Ralph

after

6512



before

3400 Grausstark

after

6513



1301 Colquitt

before

6514



after



Public Property

2700 Waughcrest

before

6515



after



Improvement District # 6

Graffiti Abatement

Before and After Pictures

August 25, 2012

Business Property

1900 Dunlavy

before

6516



after



Public Property

800 Woodrow

before

6517



after



1900 Branard

before

6518



after



1901 Dunlavy

before

6519



after



1901 Dunlavy

before

6520



after



701 Hyde Park

before

6521



after



2705 Yoakum

before

6522



after



Improvement District # 6

Graffiti Abatement

Before and After Pictures

August 27, 2012

Business Property

3321 Stanford

before

6523



after



3810 McDuffie

before

6524



after



before **3810 McDuffie – Site abated, image not available**

after

6525



Public Property

3321 Stanford

before

6526



after



1417 Branard

before

6527



after



2700 Dunlavy

before

6528



after



2700 Dunlavy

before

6529



after



before

6530

3810 McDuffie

after



before

6531

3810 McDuffie

after



before

6532



3818 McDuffie

after



before

6533



3810 McDuffie

after



before

6534

3900 McDuffie

after



before

6535

2400 Commonwealth

after



before

1540 Harold

after

6536



before

3401 Mandell

after

6537



3700 Dunlavy

before

6538



after



3600 Dunlavy

before

5639



after



1845 Marshall

before

6540



after



1400 Hawthorne

before

6541



after



3300 Mulberry

before

6542



after



3702 Mt. Vernon

before

6543



after



Improvement District # 6

Graffiti Abatement

Before and After Pictures

August 30, 2012

Business Property

before

6544

417 Westheimer

after



before

6545

417 Westheimer

after



417 Westheimer

before

6546



after



417 Westheimer

before

6547



after



Public Property

3703 Grausstark

before

6548



after



3600 Yupon

before

6549



after



before

3600 Yupon

after

6550



before

3515 Yupon

after

6551



3400 Mulberry

before

6552



after



1500 Harold

before

6553



after



before

1744 Harold

after

6554



before

1750 Harold

after

6555



before

1750 Harold

after

6556



before

1851 Harold

after

6557



before

1916 Harold

after

6558



before

3321 Stanford

after

6559



803 Hawthorne

before

6560



after



Southwest Fwy and Richmond

before

6561



after



Southwest Fwy and Richmond

before

6562



after



Southwest Fwy and Richmond

before

6563



after



Montrose and Richmond

before

6564



after



before

6565

2401 Ralph



after



before

2000 Main

after

6566



before

1900 Main

after

6567



Dumpsters

before

6568

417 Westheimer

after



before

6569

417 Westheimer

after



3500 McDuffie

before

6570



after

