

# Montrose District



Graffiti Abatement Reports

---

July 2014

# Montrose District

## Monthly Graffiti Abatement Reports 2014

Abated	Jan	Feb	Mar	Apr	May	June	July	Aug	Sept	Oct	Nov	Dec	2013 Total
Business Property	66	41	48	71	58	46	67						397
Public Property	136	177	167	116	197	158	260						1211
Trash Dumpsters	3	6	10	4	12	6	3						44
<b>Total:</b>	<b>205</b>	<b>224</b>	<b>225</b>	<b>191</b>	<b>267</b>	<b>210</b>	<b>330</b>						<b>1,652</b>

Graffiti Abatement Reports Totals 2008 - 2014								
	2008	2009	2010	2011	2012	2013	2014	Totals
<b>Abated</b>								
Business Property	184	98	144	563	522	467	397	<b>2375</b>
Public Property	538	771	935	1,802	1,724	1839	1211	<b>8820</b>
Trash Dumpsters	28	40	48	59	114	84	44	<b>417</b>
<b>Total:</b>	<b>750</b>	<b>909</b>	<b>1,127</b>	<b>2,424</b>	<b>2,360</b>	<b>2,390</b>	<b>1,652</b>	<b>11,612</b>

# Improvement District # 6

Graffiti Abatement

**Before and After Pictures**

**July 2, 2014**

# Private Property

before  
11283

## 400 Fairview

after



before  
11284

## 800 Fairview

after



before

11285

## 800 Fairview

after



before

11286

## 1627 Westheimer

after





## 1627 Westheimer

before

11287



after



## 1627 Westheimer

before

11288



after



## 1627 Westheimer

before

11289



after



## 1627 Westheimer

before

11290



after





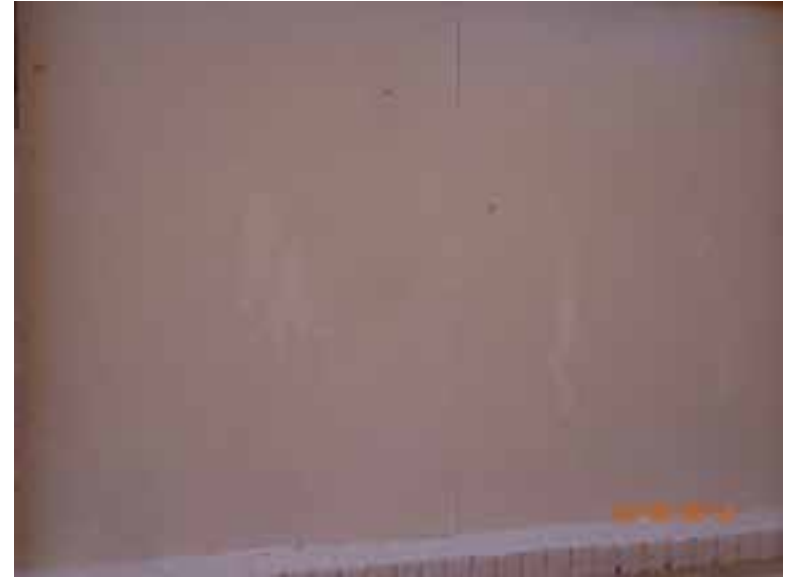
# 1627 Westheimer

before

11291



after



# Public Property

before

11292

## 2400 Commonwealth

after



before

11293

## 2400 Commonwealth

after



before

11294

## 2400 Commonwealth

after



before

11295

## 2400 Commonwealth

after





before

11296

## 2400 Commonwealth

after



before

11297

## 2300 Commonwealth

after





before

11298

## 2300 Commonwealth

after



before

11299

## 2400 Waugh

after



## 1100 Fairview

before

11300



after



## 1100 Fairview

before

11301



after



## 2400 Montrose

before

11302



after



## 2400 Montrose

before

11303



after





## 2300 Montrose

before

11304



after



## 2300 Montrose

before

11305



after



before

11306

2300 Montrose

after



before

11307

2300 Montrose

after





## 2300 Montrose

before

11308



after



## 2300 Montrose

before

11309



after



## 2300 Montrose

before

11310



after



## 2300 Montrose

before

11311



after



## 2300 Montrose

before

11312



after



## 2300 Montrose

before

11313



after





## 1000 Fairview

before

11314



after



## 1000 Fairview

before

11315



after



## 1000 Fairview

before

11316



after



## 1000 Fairview

before

11317



after





## 1000 Fairview

before

11318



after



## 1000 Fairview

before

11319



after



before

11320

## 900 Fairview

after



before

11321

## 900 Fairview

after



before

11322



800 Fairview

after



before

11323



800 Fairview

after





before

11324

## 300 Fairview

after



before

11325

## 300 Fairview

after





## 2700 Ridgewood

before

11326



after



## 1800 Fairview

before

11327



after



## 1600 Westheimer

before

11328



after



## 1600 Westheimer

before

11329



after



## 1600 Westheimer

before

11330



after



## 1500 Westheimer

before

11331



after





## 1500 Westheimer

before

11332



after



## 1600 Westheimer

before

11333



after





## 1600 Westheimer

before

11334



after



## 1600 Westheimer

before

11335



after



## 1600 Westheimer

before

11336



after



## 1600 Westheimer

before

11337



after



before

11338

900 Dunlavy

after



before

11339

900 Dunlavy

after





before  
11340

900 Dunlavy

after



before  
11341

900 Dunlavy

after





before

11342

## 1600 Welch

after



# Dumpsters

# 1660 Westheimer

before

11343



after



# Improvement District # 6

Graffiti Abatement

**Before and After Pictures**

**July 7, 2014**



# Private Property

# 1616 Montrose

before

11344



after



# Public Property

before

11345

1300 Peden

after



before

11346

1300 Peden

after





before

11347

## 1300 Peden

after



before

11348

## 1600 Montrose

after



## 1600 Montrose

before

11349



after



## 1600 Montrose

before

11350



after





before

1600 Montrose

after

11351



before

1600 Montrose

after

11352



before

11353

1000 Peden

after



before

11354

1000 Peden

after





before

11355

1000 Peden

after



before

11356

1000 Peden

after



before

11357

1000 Peden

after



before

11358

1000 Peden

after



before

1700 Montrose

after

11359



before

1700 Montrose

after

11360





before

1700 Montrose

after

11361



before

1700 Montrose

after

11362





## 1700 Montrose

before

11363



after



## 1700 Montrose

before

11364



after



## 1700 Montrose

before

11365



after



## 1700 Montrose

before

11366



after





before

11367

## 1700 Montrose

after



before

11368

## 2000 Waugh

after



## 2000 Montrose

before

11369



after



## 2000 Montrose

before

11370



after





## 2000 Montrose

before

11371



after



## 2000 Montrose

before

11372



after



before

11373

## 2000 Montrose

after



before

11374

## 2100 Commonwealth

after





before

11375

## 2200 Commonwealth

after



before

11376

## 2200 Commonwealth

after



before

11377

## 200 W Alabama

after



before

11378

## 300 W Alabama

after





## 300 W Alabama

before

11379



after



## 3900 Greeley

before

11380



after



before

11381

500 Westheimer

after



before

11382

500 Westheimer

after



before

11383

## 4200 Hazard

after



# Improvement District # 6

Graffiti Abatement

**Before and After Pictures**

**July 7, 2014**



# Private Property

before

11384

## 3314 Taft

after



before

11385

## 400 Montrose

after



## 400 Montrose

before

11386



after



## 3509 Montrose

before

11387



after





## 400 Montrose

before

11388

No  
Before  
Image  
Available

after



## 1637 Westheimer

before

11389



after



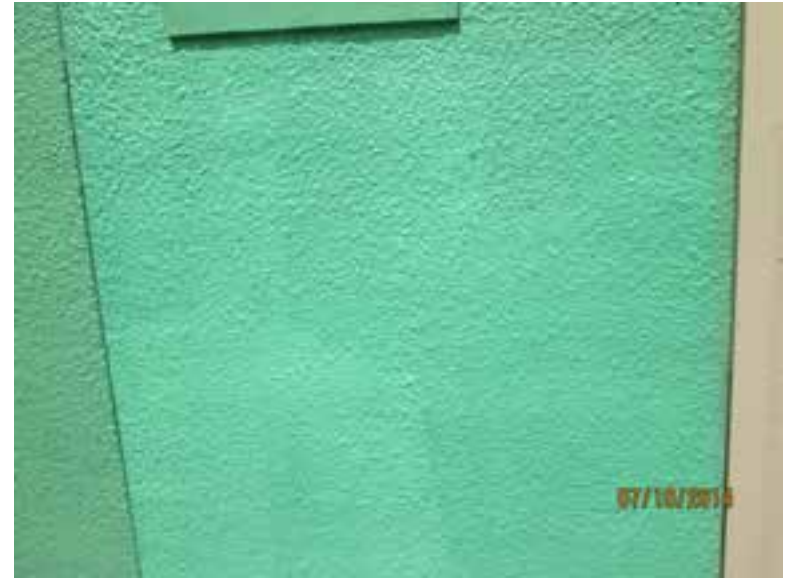
## 1637 Westheimer

before

11390



after



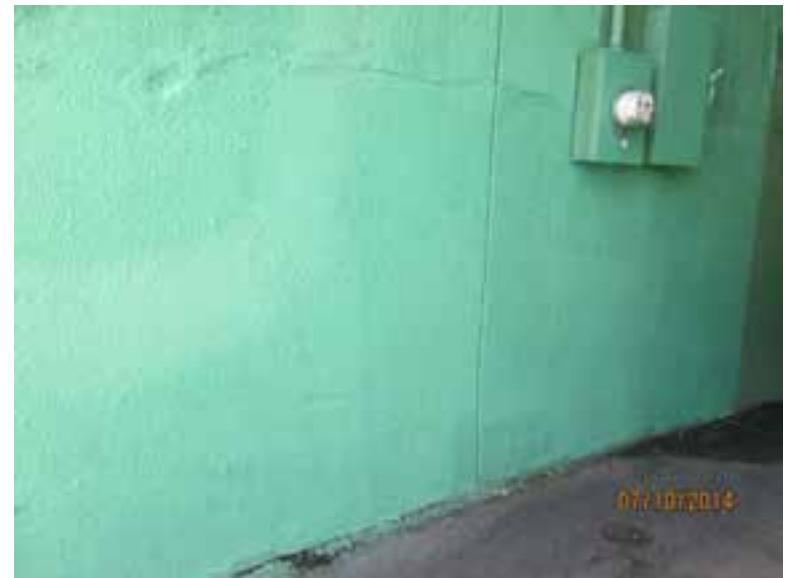
## 1637 Westheimer

before

11391



after



## 1639 Westheimer

before

11392



after



## 1639 Westheimer

before

11393



after





## 1637 Westheimer

before

11394



after



## 1733 Westheimer

before

11395



after



## 1733 Westheimer

before

11396



after



## 1733 Westheimer

before

11397



after



## 1627 Westheimer

before

11398



after



## 1627 Westheimer

before

11399



after



# 1733 Westheimer

before

11400



after





# Public Property

## 4800 Montrose

before

11401



after



## 4800 Montrose

before

11402



after



before

11403

1100 Banks

after



before

11404

1100 Banks

after



## 400 Montrose

before

11405



after



## Montrose at W Gray

before

11406



after





before

## Montrose at W Gray

after

11407



before

## Montrose at W Gray

after

11408



before

11409

2600 Waugh

after



before

11410

2600 Waugh

after



# Improvement District # 6

Graffiti Abatement

**Before and After Pictures**

**July 14, 2014**

# Private Property



## 1401 Hawthorne

before

11411



after



## 1401 Hawthorne

before

11412



after



## 1401 Hawthorne

before

11413



after



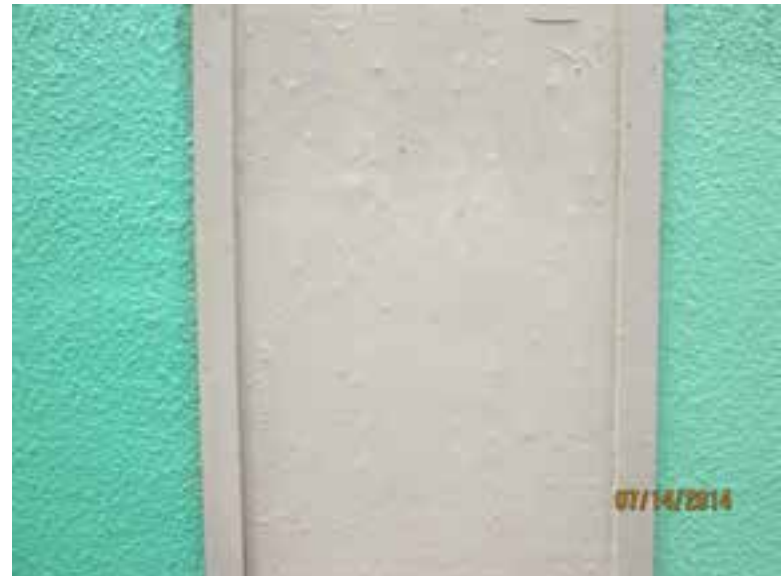
## 1637 Westheimer

before

11414



after



# 1613 Westheimer

before

11415



after



# Public Property



before

11416

2500 Taft

after



before

11417

412 Westheimer

after



before

11418

## 400 Westheimer

after



before

11419

## 400 Westheimer

after



## 400 Westheimer

before

11420



after



## 400 Westheimer

before

11421



after





## 400 Westheimer

before

11422



after



## 400 Westheimer

before

11423



after





## 400 Westheimer

before

11424



after



## 2900 Taft

before

11425



after



before

11426

2900 Taft

after



before

11427

2900 Taft

after



before

11428

3314 Taft

after



before

11429

3314 Taft

after





before

11430



3300 Taft

after



before

11431



3300 Taft

after





## 600 Hawthorne

before

11432



after



## 3300 Taft

before

11433



after



## 1400 Hawthorne

before

11434



after



## 1609 Hawthorne

before

11435



after





## 1500 California

before

11436



after



## 1800 Fairview

before

11437



after



before  
11438

## 2516 Commonwealth

after



before  
11439

## 2516 Commonwealth

after





# Improvement District # 6

Graffiti Abatement

**Before and After Pictures**

**July 17, 2014**

# Private Property

before

## 3307 Roseland

after

11440



before

## 3307 Roseland

after

11441





## 3300 Roseland

before

11442



after



## 2700 Montrose

before

11443



after



## 4314 Montrose

before

11444



after



## 4314 Montrose

before

11445



after



# Public Property



## 900 Hawthorne

before

11446



after



## 3600 Yoakum

before

11447



after





## 4400 Montrose

before

11448



after



## 4400 Montrose

before

11449



after



before  
11450

1900 Waugh

after



before  
11451

1900 Waugh

after





before

11452

1000 Taft



after



before

11453

1200 Westheimer



after



## 1500 Stanford

before

11454



after



## 1500 Stanford

before

11455



after





## 4600 Montrose

before

11456



after



## 4600 Montrose

before

11457



after



before

11458

## 400 Westheimer

after



before

11459

## 400 Westheimer

after



## 2700 Montrose

before

11460



after



## Montrose at Westheimer

before

11461



after



# Improvement District # 6

Graffiti Abatement

**Before and After Pictures**

**July 21, 2014**



# Private Property

before

**503 Westheimer**

after

11462



before

**503 Westheimer**

after

11463



before

11464

## 503 Westheimer

after



before

11465

## 507 Westheimer

after





## 507 Westheimer

before

11466



after



## 215 Westheimer

before

11467



after





# Public Property

## 1700 Alabama

before

11468



after



## 1700 Alabama

before

11469



after



## Dunlavy near Alabama

before

11470



after



## 300 Westheimer

before

11471



after





## 3700 Stanford

before

11472



after



## Alabama at Stanford

before

11473



after





## 2804 Stanford

before

11474



after



## 411 Westheimer

before

11475



after



## 411 Westheimer

before

11476



after



## 411 Westheimer

before

11477



after



before

11478

2700 Taft

after



before

11479

2700 Taft

after





before

11480

3100 Helena

after



before

11481

200 Westheimer

after





before  
11482

200 Westheimer

after



before  
11483

200 Westheimer

after



# Improvement District # 6

Graffiti Abatement

**Before and After Pictures**

**July 24, 2014**

# Private Property

## 1732 Westheimer

before

11484



after



## 1232 Westheimer

before

11485



after





## 1232 Westheimer

before

11486



after



## 701 Alabama

before

11487



after



## 1712 Richmond

before

11488



after



## 1801 Richmond

before

11489



after



# Public Property

## 4500 Dunlavy

before

11490



after



## 4500 Dunlavy

before

11491



after





## 4500 Dunlavy

before

11492



after



## 4500 Dunlavy

before

11493



after



## 4500 Dunlavy

before

11494



after



## 4500 Dunlavy

before

11495



after



## 4500 Dunlavy

before

11496



after



## 4500 Dunlavy

before

11497



after



## 4600 Dunlavy

before

11498



after



## 4600 Dunlavy

before

11499



after





## 4600 Dunlavy

before

11500



after



## 4600 Dunlavy

before

11501



after



## 4600 Dunlavy

before

11502



after



## 4600 Dunlavy

before

11503



after



## Mandell at Richmond

before

11504



after



## 1800 Richmond

before

11505



after



# 4500 Dunlavy

before

11506



after





# Dumpsters

# 1601 Richmond

before

11507



after



# Improvement District # 6

Graffiti Abatement

**Before and After Pictures**

**July 28, 2014**

# Private Property



## 1627 Westheimer

before

11508



after



## 1627 Westheimer

before

11509



after



## 510 Richmond

before

11510



after



## 510 Richmond

before

11511



after



## 1603 Colquitt

before

11512



after



## 3300 Taft

before

11513



after



# Public Property



## 1600 Richmond

before

11514



after



## 1600 Richmond

before

11515



after



## 1700 Richmond

before

11516



after



## 4500 Dunlavy

before

11517



after



## 1701 Richmond

before

11518



after



## 1701 Richmond

before

11519



after





## 1600 Dunlavy

before

11520



after



## Peden at Dunlavy

before

11521



after





## 1600 Westheimer

before

11522



after



## 1600 Westheimer

before

11523



after



## 2300 Dunlavy

before

11524



after



## 2300 Dunlavy

before

11525



after



## 2400 Dunlavy

before

11526



after



## 2300 Dunlavy

before

11527



after





## 1600 Westheimer

before

11528



after



## 3300 Mandell

before

11529



after





## 3300 Mandell

before

11530



after



## 900 Alabama

before

11531



after



# Dumpsters

# 1655 Dunlavy

before

11532



after



# Improvement District # 6

Graffiti Abatement

**Before and After Pictures**

**July 30, 2014**



# Private Property

## 1609 Westheimer

before

11533



after



## 1500 Haddon

before

11534



after



## 1900 W Dallas

before

11535



after



## 1900 W Dallas

before

11536



after





## 4700 Yoakum

before

11537



after



## 4315 Woodhead

before

11538



after





before

11539

1000 Autrey

after



before

11540

1000 Autrey

after



## 1900 Richmond

before

11541



after



## 1900 Richmond

before

11542



after





# 1800 Richmond

before

11543



after



# Public Property



## 3500 Dunlavy

before

11544



after



## 3500 Dunlavy

before

11545



after



before

11546

## 2400 Commonwealth

after



before

11547

## 1900 Peden

after



before

11548



1500 Haddon

after



before

11549



1500 Haddon

after





before

11550

1500 Haddon

after



before

11551

1500 Haddon

after





before

11552

1500 Haddon

after



before

11553

1500 Haddon

after



## 1700 Ridgewood

before

11554



after



## 1500 Welch

before

11555



after





before

11556

## 1900 Commonwealth

after



before

11557

## 1900 Commonwealth

after



before

11558

## 1900 Commonwealth

after



before

11559

## 2000 Commonwealth

after





before

11560

## 2000 Commonwealth

after



before

11561

## 2000 Commonwealth

after



before

11562

1500 Waugh

after



before

11563

1500 W Gray

after



before

11564



1500 W Gray

after



before

11565



1100 W Gray

after





before

11566

## 1100 W Gray

after



before

11567

## 1300 W Gray

after





before  
11568

900 Taft

after



before  
11569

900 Taft

after



before

11570

1900 W Gray

after



before

11571

1900 W Gray

after





before

11572

## 1000 Montrose

after



before

11573

## 2000 W Dallas

after



## 1900 W Dallas

before

11574



after



## 1900 W Dallas

before

11575



after





## 1900 W Dallas

before

11576



after



## 1900 W Dallas

before

11577



after



## 1900 W Dallas

before

11578



after



## 1900 W Dallas

before

11579



after





## 1900 W Dallas

before

11580



after



## 1900 W Dallas

before

11581



after



## 1900 W Dallas

before

11582



after



## 1900 W Dallas

before

11583



after





## 1900 W Dallas

before

11584



after



## 1900 W Dallas

before

11585



after



## 1900 W Dallas

before

11586



after



## 1000 Taft

before

11587



after



before

11588

1000 Taft

after



before

11589

4700 Yoakum

after





## 4700 Yoakum

before

11590



after



## 4700 Yoakum

before

11591



after



before

11592

1100 Autrey

after



before

11593

1100 Autrey

after



## 4700 Montrose

before

11594



after



## 4700 Montrose

before

11595



after





before

11596

1000 Autrey

after



before

11597

1000 Autrey

after



before

11598

1000 Autrey

after



before

11599

1000 Autrey

after



## 4600 Graustark

before

11600



after



## 2000 Richmond

before

11601



after





## 2000 Richmond

before

11602



after



## 2000 Richmond

before

11603



after



## 2000 Richmond

before

11604



after



## 1900 Richmond

before

11605



after



## 1900 Richmond

before

11606



after



## 1900 Richmond

before

11607



after





## 1800 Richmond

before

11608



after



## 700 Richmond

before

11609



after



## 4300 Stanford

before

11610



after



## 300 W Alabama

before

11611



after



## 300 W Alabama

before

11612



after

