

# Montrose District



Graffiti Abatement Reports

---

June 2012

# Montrose District

## Monthly Graffiti Abatement Reports 2012

Abated	Jan	Feb	Mar	Apr	May	June	July	Aug	Sept	Oct	Nov	Dec	2012 Total
Business Property	74	42	47	41	37	56							297
Public Property	105	135	182	158	134	124							838
Trash Dumpsters	7	10	8	15	12	9							61
<b>Total:</b>	<b>186</b>	<b>187</b>	<b>237</b>	<b>214</b>	<b>183</b>	<b>189</b>							<b>1196</b>

Graffiti Abatement Reports Totals 2008 - 2012						
	2008	2009	2010	2011	2012	Totals
<b>Abated</b>						
Business Property	184	98	144	563	297	1286
Public Property	538	771	935	1802	838	4884
Trash Dumpsters	28	40	48	59	61	236
<b>Total:</b>	<b>750</b>	<b>909</b>	<b>1,127</b>	<b>2,424</b>	<b>1196</b>	<b>6,406</b>

# Improvement District # 6

Graffiti Abatement

**Before and After Pictures**

**June 1, 2012**

# Business Property

before

300 W. Clay

after

6218



before

1900 Colquitt

after

6219



# Public Property



before

1500 Taft

after

6220



before

1500 Taft

after

6221



before

520 W. Clay

after

6222



before

616 W. Clay

after

6223





before

616 W. Clay

after

6224



before

300 W. Bell

after

6225



## 1400 Stanford

before

6226



after



## 1921 W. Dallas

before

6227



after





before

300 W. Polk

after

6228



before

1400 Taft

after

6229



## 1500 Stanford

before

6230



after



## 1500 Stanford

before

6231



after



## 1600 Stanford

before

6232



after



## 1700 Stanford

before

6233



after





## 2600 Whitney

before

6234



after



## 4200 Mandell

before

6235



after



## 2600 Dunlavy

before

6236



after



## 1800 Alabama

before

6237



after





## 4300 Woodhead

before

6238



after



## 1613 Richmond

before

6239



after



## 4000 Dunlavy

before

6240



after



## 4200 Hazard

before

6241



after



## 4000 Dunlavy

before

6242



after



## 1000 Richmond

before

6243



after





before

**3800 Jack**

after

6244



# Improvement District # 6

Graffiti Abatement

**Before and After Pictures**

**June 4, 2012**

# Business Property

## 1540 Westheimer

before

6245



after



## 1627 Westheimer

before

6246



after



## 1627 Westheimer

before

6247



after



## 1611 Westheimer

before

6248



after





before

6249



1611 Westheimer

after



before

6250



1611 Westheimer

after



## 1611 Westheimer

before

6251



after



before

6252

1609 Westheimer – Site abated, image not available

after





## 4001 Mandell

before

6253



after



## 4001 Mandell

before

6254



after



# Public Property

before

1600 Indiana

after

6255



before

1500 Hyde Park

after

6256





## 1600 Cherryhurst

before

6257



after



## 1600 Cherryhurst

before

6258



after



## 2100 Dunlavy

before

6259



after



## 1701 Vermont

before

6260



after





## 1701 Vermont

before

6261



after



## 2400 Commonwealth

before

6262



after



## 1512 Sul Ross

before

6263



after



## 1512 Sul Ross

before

6264



after



## 3901 Mulberry

before

6265



after



# Improvement District # 6

Graffiti Abatement

**Before and After Pictures**

**June 7, 2012**



# Business Property

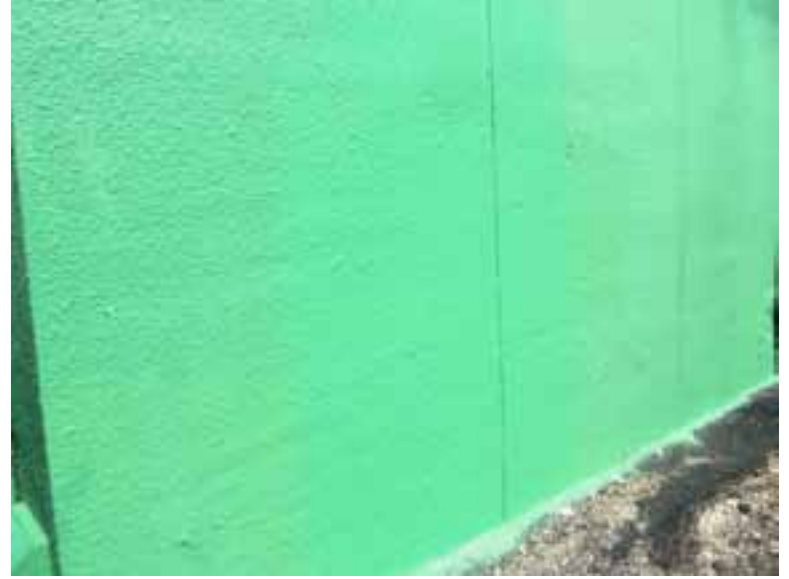
## 1637 Westheimer

before

6266



after



## 1637 Westheimer

before

6267



after



## 2059 Sul Ross

before

6268



after



## 2059 Sul Ross

before

6269



after



## 3100 S. Shepherd

before

6270



after



## 3100 S. Shepherd

before

6271



after





# Public Property

## 3010 W. Dallas

before

6272



after



## 2616 W. Dallas

before

6273



after



before

900 Willard

after

6274



before

900 Willard

after

6275



before

## 1000 Willard

after

6276



before

## Dennis and Genesse

after

6277





## 2059 Sul Ross

before

6278



after



## 1000 Richmond

before

6279



after



# Improvement District # 6

Graffiti Abatement

**Before and After Pictures**

**June 11, 2012**

# Business Property

## 1212 Westheimer

before

6280



after



## 1308 Richmond

before

6281



after





# 1428 Hawthorne

before

6282



after



# Public Property

## 1308 Richmond

before

6283



after



## 1401 Richmond

before

6284



after



## 1404 Richmond

before

6285



after



## 1600 Richmond

before

6286



after





before

3900 Driscoll

after

6287



before

1852 Sul Ross

after

6288



before

1807 Harold

after

6289



before

1320 Hawthorne

after

6290





## 1430 Hawthorne

before

6291



after



## 1501 Harold

before

6292



after



## 3401 Mandell

before

6293



after



## 1601 Indiana

before

6294



after





before

2200 Yupon

after

6295



before

1525 Maryland

after

6296



## 1525 Maryland

before

6297



after



## 1104 Jackson

before

6298



after



before

1107 Jackson

after

6299





# Improvement District # 6

Graffiti Abatement

**Before and After Pictures**

**June 14, 2012**



# Business Property

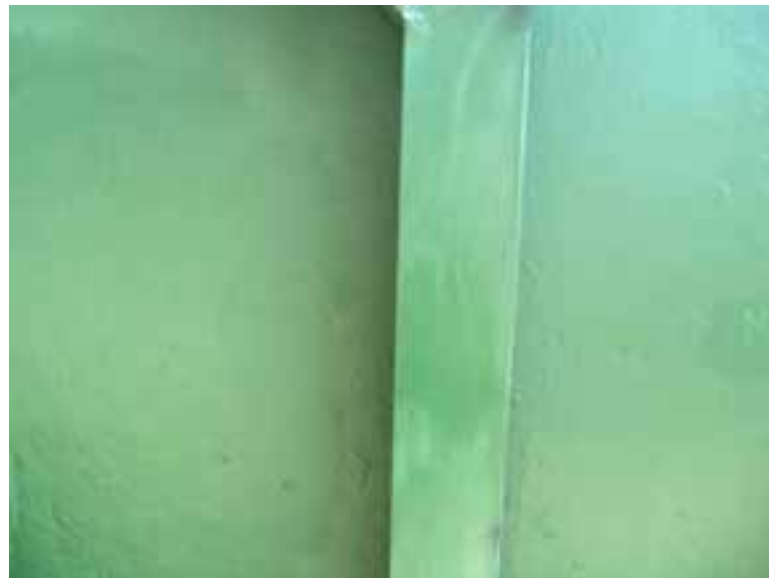
## 1437 Hawthorne

before

6300



after



## 2413 Ralph

before

6301



after



## 2518 Mandell

before

6302



after



## 2518 Mandell

before

6303



after



## 2518 Mandell

before

6304



after



## 1820 Missouri

before

6305



after





## Alabama and Montrose

before

6306



after



## 1407 Hawthorne

before

6307



after



# Public Property

before

**2300 Mason**

after

6308



before

**1700 Commonwealth**

after

6309





before

6310

## 1800 Commonwealth

after



before

6311

## 1801 Missouri

after





## 1801 Missouri

before

6312



after



## 2410 Ralph

before

6313



after



# 1401 California

before

6314



after



# Dumpsters

# 1953 Montrose

before

6315



after





# Improvement District # 6

Graffiti Abatement

**Before and After Pictures**

**June 18, 2012**

# Business Property

## 1201 Richmond

before

6316



after



## 1201 Richmond

before

6317



after



## 1201 Richmond

before

6318



after



## 1201 Richmond

before

6319



after





## 1201 Richmond

before

6320



after



## 1201 Richmond

before

6321



after



before

502 Alabama

after

6322



before

2700 Lincoln

after

6323



before

2720 Lincoln

after

6324



before

1002 Westheimer

after

6325





## 1002 Westheimer

before

6326



after



## 1002 Westheimer

before

6327



after





# Public Property

## 1400 Richmond

before

6328



after



## 500 Alabama

before

6329



after



before

## 300 Alabama

after

6330



before

## 505 Alabama

after

6331



before

2700 Lincoln

after

6332



before

1000 California

after

6333





## 1000 California

before

6334



after



before

6335

## 2719 Lincoln



after



# Dumpsters

## 1201 Richmond

before

6336



after



## 1201 Richmond

before

6337



after



# Improvement District # 6

Graffiti Abatement

**Before and After Pictures**

**June 21, 2012**



# Business Property

before

500 Taft

after

6338



before

500 Taft

after

6339



before

500 Taft

after

6340



before

500 Taft

after

6341



# 1417 Westheimer

before

6342



after





# Public Property

before

500 Taft

after

6343



before

500 Taft

after

6344



before

500 Taft

after

6345



before

1425 Westheimer

after

6346



## 1425 Westheimer

before

6347



after



## 1417 Westheimer

before

6348



after





## 2500 W. Dallas

before

6349



after



## 2000 Haddon

before

6350



after



## 2000 Haddon

before

6351



after



## 1700 Dunlavy

before

6352



after





before

after



before

after



before

718 Alabama

after

6355



before

718 Alabama

after

6356





before

718 Alabama

after

6357



before

800 Alabama

after

6358



before

## 716 Alabama

after

6359



before

## 800 Alabama

after

6360



before

900 Alabama

after

6361



# Dumpsters



# 1425 Westheimer

before

6362



after



# Improvement District # 6

Graffiti Abatement

**Before and After Pictures**

**June 25, 2012**

# Business Property

## 1629 Westheimer

before

6363



after



## 1629 Westheimer

before

6364



after





## 1637 Westheimer

before

6365



after



## 1637 Westheimer

before

6366



after



## 1637 Westheimer

before

6367



after



## 900 Richmond

before

6368



after



## 2010 Branard

before

6369



after



# Public Property



## 1639 Westheimer

before

6370



after



## 1639 Westheimer

before

6371



after



## 1637 Westheimer

before

6372



after



before

6373

## 2931 Taft



after



before

2931 Taft

after

6374



before

2000 Converse

after

6375





before

2104 Croker

after

6376



before

400 Willard

after

6377





before

## 400 Willard

after

6378



before

## 2500 Commonwealth

after

6379



before

6380



## 2600 Commonwealth

after



before

6381



## 2001 Branard

after



# Dumpsters

before

6382

900 Richmond

after





# Improvement District # 6

Graffiti Abatement

**Before and After Pictures**

**June 29, 2012**

# Business Property

before

805 Chelsea

after

6383



before

3300 Whitney

after

6384



before

2700 Lincoln

after

6385





# Public Property

before

719 Chelsea

after

6386



before

700 Richmond

after

6387



## 3500 Stanford

before

6388



after



## 260 Stanford

before

6389



after



## 1500 Fairview

before

6390



after



## 400 Lovett

before

6391



after





## 3700 Dunlavy

before

6392



after



## 3500 Dunlavy

before

6393



after



## 3500 Dunlavy

before

6394



after



## 600 Richmond

before

6395



after



## 800 W. Alabama

before

6396



after



## 200 Stratford

before

6397



after





before

6398

700 Avondale

after



before

6399

700 Bomar

after





## 1300 Stanford

before

6400



after



## 1200 Columbus

before

6401



after



before

1000 Harold

after

6402



# Dumpsters

before

400 Fairview

after

6403



before

400 Fairview

after

6404





before

## 400 Fairview

after

6405



before

## 600 Alabama

after

6406

