

# Montrose District



Graffiti Abatement Reports

---

June 2011

# Montrose District

## Monthly Graffiti Abatement Reports 2011

Abated	Jan	Feb	Mar	Apr	May	June	July	Aug	Sept	Oct	Nov	Dec	2010 Total
Business Property	59	20	21	42	107	51							300
Public Property	54	85	52	64	334	226							815
Trash Dumpsters	10	1	5	3	5	7							31
<b>Total:</b>	<b>123</b>	<b>106</b>	<b>78</b>	<b>109</b>	<b>446</b>	<b>284</b>							<b>1146</b>

Graffiti Abatement Reports Totals 2008 - 2011					
	2008	2009	2010	2011	Totals
<b>Abated</b>					
Business Property	184	98	144	300	726
Public Property	538	771	935	815	3059
Trash Dumpsters	28	40	48	31	147
<b>Total:</b>	<b>750</b>	<b>909</b>	<b>1,127</b>	<b>1146</b>	<b>3932</b>

# Improvement District # 6

Graffiti Abatement

**Before and After Pictures**

**June 1, 2011**

# Business Property

## 1730 Richmond

before

3649



after



## 4400 Yupon

before

3650



after



before

4400 Yupon

after

3651



# Public Property



## 1600 Richmond

before

3652



after



## 1700 Richmond

before

3653



after





## 1503 W. Alabama

before

3654



after



## 3900 Mulberry

before

3655



after



## 4500 Mandell

before

3656



after



## 4500 Mandell

before

3657



after



## 4404 Mandell

before

3658



after



## 4404 Mandell

before

3659



after





## 4404 Mandell

before

3660



after



## 4400 Yupon

before

3661



after



before

4400 Yupon

after

3662



before

4400 Yupon

after

3663





## 2000 Richmond

before

3664



after



## 2000 Richmond

before

3665



after





before

## 4200 Hazard

after

3666



before

## 1800 W. Alabama

after

3667



before

3668

## 1800 W. Alabama

after



before

3669

## 1830 W. Alabama

after



## 1830 W. Alabama

before

3670



after



## 1800 W. Alabama

before

3671



after





## 1800 W. Alabama

before

3672



after



## 3800 Woodhead – Reported to the City #154197

before

3673



after



## 3800 Woodhead

before

3674



after



## 3914 Woodhead

before

3675



after





## 3914 Woodhead

before

3676



after



## 1800 Colquitt

before

3677



after





# 4000 Dunlavy

before

3678



after



# 4000 Dunlavy

before

3679



after



# 4100 Dunlavy

before

3680



after



# Improvement District # 6

Graffiti Abatement

**Before and After Pictures**

**June 3, 2011**

# Business Property

# 1415 Richmond

before

3681



after



# Public Property



## 4400 Mandell

before

3682



after



## 4400 Mandell

before

3683



after



## 4400 Mandell

before

3684



after



## 4500 Mandell

before

3685



after





## 4500 Mandell

before

3686



after



## 1600 Norfolk

before

3687



after



## 1613 Richmond

before

3688



after



## 1415 Richmond

before

3689



after





## 1415 Richmond

before

3690



after



## 1601 Castle

before

3691



after



## 4200 Dunlavy

before

3692



after



## 4200 Dunlavy

before

3693



after





## 4100 Mandell

before

3694



after



## 3845 Dunlavy

before

3695



after



## 1415 Richmond

before

3696



after



## 1415 Richmond

before

3697



after



## 1415 Richmond

before

3698



after



## 1415 Richmond

before

3699



after





## 1415 Richmond

before

3700



after



## 1415 Richmond

before

3701



after



## 3900 Mandell

before

3702



after



## 3900 Mandell

before

3703



after





before

3704

## 1600 W. Alabama

after



before

3705

## 1600 W. Alabama

after



## 1632 W. Alabama

before

3706



after



## 1632 W. Alabama

before

3707



after





before

3708

2900 McDuffie

after



before

3709

2900 McDuffie

after



## 2000 Sul Ross

before

3710



after



## 2000 Sul Ross

before

3711



after



before

3712

3900 McDuffie

after



before

3713

3900 McDuffie

after





before

## 4321 Hazard

after

3714



before

## 4321 Hazard

after

3715





## 1800 Portsmouth

before

3716



after



## 1800 Portsmouth

before

3717



after



## 1800 Portsmouth

before

3718



after



## 1752 Norfolk

before

3719



after





before

3720

## 4500 Woodhead

after



before

3721

## 4510 Hazard

after



# Dumpsters



# 4200 Dunlavy

before

3722



after



# Improvement District # 6

Graffiti Abatement

**Before and After Pictures**

**June 6, 2011**

# Business Property

## 3700 S. Shepherd

before

3723



after



## 3202 S. Shepherd

before

3724



after





# Public Property

## 1401 S. Shepherd

before

3725



after



## 1401 S. Shepherd

before

3726



after



## 2119 S. Shepherd

before

3727



after



## 3603 S. Shepherd

before

3728



after





before

3729

3603 S. Shepherd

after



before

3730

3603 S. Shepherd

after



3600 S. Shepherd

before  
3731



after



3600 S. Shepherd

before  
3732



after



## 3209 S. Shepherd

before

3733



after



## 3107 S. Shepherd

before

3734



after





before

3735

3107 S. Shepherd

after



before

3736

2003 Alabama St.

after



before

3737

## 2003 Alabama St.

after



before

3738

## 1800 Alabama St.

after



1827 Alabama St.

before

3739



after



1827 Alabama St.

before

3740



after





## 1830 Alabama

before

3741



after



## Alabama and Woodhead

before

3742



after



## Alabama and Woodhead

before

3743



after



## Alabama and Woodhead

before

3744



after



## Alabama and Woodhead

before

3745



after



## 1806 Alabama

before

3746



after





## Alabama and Woodhead

before

3747



after



## 1723 Alabama

before

3748



after



## 1723 Alabama

before

3749



after



## 1723 Alabama

before

3750



after



# 1700 Alabama

before

3751



after





# Improvement District # 6

Graffiti Abatement

**Before and After Pictures**

**June 9, 2011**

# Business Property

before

3752

## 2402 Commonwealth

after



before

3753

## 1540 Westheimer

after





before

1001 Autrey

after

3754



# Public Property

## 1400 W. Gray

before

3755



after



## 2207 Commonwealth

before

3756



after





before

3757

## 2207 Commonwealth

after



before

3758

## 2207 Commonwealth

after



before

3759

## 2400 Commonwealth

after



before

3760

## 2524 Commonwealth

after



before

3761

## 2524 Commonwealth

after



before

3762

## 2527 Commonwealth

after





before

3763

## 2527 Commonwealth

after



before

3764

## 2600 Commonwealth

after





before

3765

## 2626 Commonwealth

after



before

3766

## 5200 Bayard

after



before

3767

1100 Bissonnet

after



before

3768

5200 Bayard

after





before

5201 Bayard

after

3769



before

4700 Yoakum

after

3770





## 4715 Yoakum

before

3771



after



## 4700 Yoakum

before

3772



after



## 4700 Montrose

before

3773



after



## 1003 Banks

before

3774



after



before

## 1003 Banks

after

3775



before

## 1003 Banks

after

3776





before

## 1003 Banks

after



# Dumpsters

before

1500 Waugh

after

3778





# Improvement District # 6

Graffiti Abatement

**Before and After Pictures**

**June 10, 2011**

# Business Property

before

3779

## 819 Richmond

after





# Public Property

before

3780

## 1300 Montrose

after



before

3781

## 2000 Montrose

after



## 2500 Montrose

before

3782



after



## 2500 Montrose

before

3783



after



before

3784

3200 Montrose

after



before

3785

3200 Montrose

after





## 2300 Montrose

before

3786



after



## 1401 Montrose

before

3787



after



before

3788

## 1401 Montrose

after



before

3789

## 1303 Montrose

after



before

3790

## 1000 W. Dallas

after



before

3791

## 1925 W. Dallas

after





before

1006 Taft

after

3792



before

1114 Taft

after

3793





## 1505 Stanford

before

3794



after



## 1220 Taft

before

3795



after



## 1400 Stanford

before

3796



after



## 600 W. Clay

before

3797



after



before

2900 Taft

after

3798



before

2900 Taft

after

3799





## 3300 Whitney

before

3800



after



## 3700 Stanford

before

3801



after





## 900 W. Alabama

before

3802



after



## 900 W. Alabama

before

3803



after



## 4200 Roseland

before

3804



after



## 4200 Roseland

before

3805



after



## 4300 Roseland

before

3806



after



## 4300 Roseland

before

3807



after





## 615 W. Alabama

before

3808



after



## 615 W. Alabama

before

3809



after





# Dumpsters

before

1006 Taft

after

3810



before

1006 Taft

after

3811



# Improvement District # 6

Graffiti Abatement

**Before and After Pictures**

**June 13, 2011**



# Business Property

## 235 Westheimer

before

3812



after



## 235 Westheimer

before

3813



after



before

3814

235 Westheimer

after



before

3815

235 Westheimer

after





before

3816

235 Westheimer

after



before

3817

232 Westheimer

after



before

3818

300 Westheimer

after



before

3819

300 Westheimer

after



before

3820

300 Westheimer

after



before

3821

300 Westheimer

after





before

3822

319 Westheimer

after



before

3823

528 Westheimer

after



## 528 Westheimer

before

3824



after



## 524 Westheimer

before

3825



after



# Public Property

## 2106 Montrose

before

3826



after



## 3314 Taft

before

3827



after





before

3828

## 300 Westheimer

after



before

3829

## 300 Westheimer

after



before

3830

300 Westheimer

after



before

3831

300 Westheimer

after



before

3832

## 300 Westheimer

after



before

3833

## 319 Westheimer

after





before

3834

319 Westheimer

after



before

3835

319 Westheimer

after





416 Westheimer

before  
3836



after



416 Westheimer

before  
3837



after



## 416 Westheimer

before

3838



after



# Dumpsters

before

3839

218 Westheimer

after





# Improvement District # 6

Graffiti Abatement

**Before and After Pictures**

**June 16, 2011**

# Business Property

before

1260 Taft

after

3840



before

1300 Taft

after

3841



before

1722 Taft

after

3842



before

1722 Taft

after

3843





before

1722 Taft

after

3844



before

1722 Taft

after

3845



before

2900 Taft

after

3846



before

2900 Taft

after

3847



before

2900 Taft

after

3848



before

2900 Taft

after

3849



before

## 501 Alabama

after

3850





# Public Property

## 3403 Hawthorne

before

3851



after



## 3403 Hawthorne

before

3852



after



before

3853

## 3401 Hawthorne

after



before

3854

## 1006 Taft

after



before

1100 Taft

after

3855



before

300 Saulnier

after

3856





before

300 Saulnier

after

3857



before

1260 Taft

after

3858



before

1260 Taft

after

3859



before

1260 Taft

after

3860





before

1260 Taft

after

3861



before

1722 Taft

after

3862



before

1722 Taft

after

3863



before

600 Hawthorne

after

3864





before

501 Alabama

after

3865



before

501 Alabama

after

3866



before

501 Alabama

after



# Dumpsters

before

1006 Taft

after

3868





# Improvement District # 6

Graffiti Abatement

**Before and After Pictures**

**June 20, 2011**

# Business Property

before

3869

3430 W. Dallas

after



before

3870

3430 W. Dallas

after



## 1900 Dunlavy

before

3871



after



## 1912 Dunlavy

before

3872



after





## 2416 Dunlavy

before

3873



after



# Public Property

## 1508 Dunlavy

before

3874



after



## 1802 Dunlavy

before

3875



after





## 1836 Dunlavy

before

3876



after



## 1900 Dunlavy

before

3877



after





## 2212 Dunlavy

before

3878



after



## 2304 Dunlavy

before

3879



after



## 2304 Dunlavy

before

3880



after



## 2401 Dunlavy

before

3881



after





## 2416 Dunlavy

before

3882



after



## 2404 Dunlavy

before

3883



after



## 2416 Dunlavy

before

3884



after



## 2500 Dunlavy

before

3885



after





## 2700 Dunlavy

before

3886



after



## 2820 Dunlavy

before

3887



after



## 2830 Dunlavy

before

3888



after



## 3500 Dunlavy

before

3889



after

Site abated, image not available.

# Improvement District # 6

Graffiti Abatement

**Before and After Pictures**

**June 23, 2011**

# Business Property



## 4100 Montrose

before

3890



after



## 3939 Montrose

before

3891



after



## 3939 Montrose

before

3892



after



## 3400 Montrose

before

3893



after





before

3300 Taft

after

3894



before

3300 Taft

after

3895

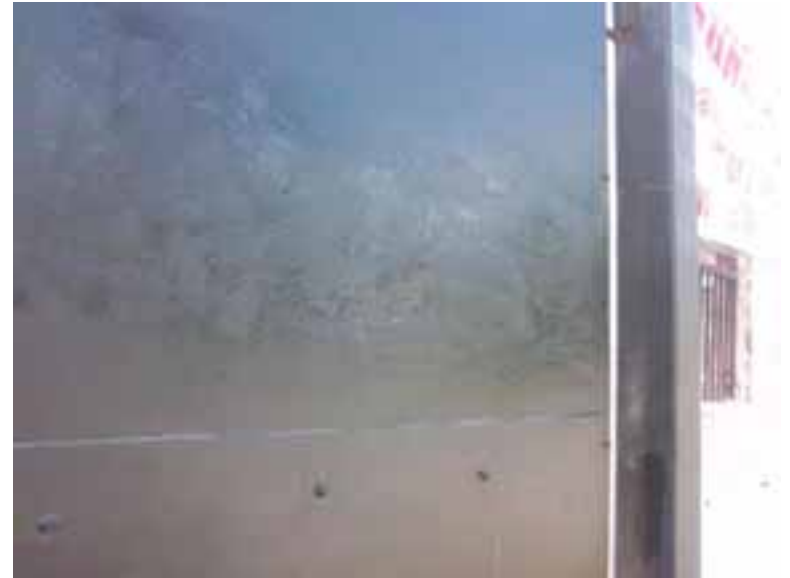


before

**3300 Taft**

after

3896



before

**2830 Taft**

after

3897





## 3400 Montrose

before

3898



after



# Public Property

## 4001 Montrose

before

3899



after



## 4119 Montros

before

3900



after



## 4120 Montrose

before

3901



after



## 3939 Montrose

before

3902



after





## 3939 Montrose

before

3903



after



## 3700 Montrose

before

3904



after



## 1500 Columbus

before

3905



after



## 704 Stanford

before

3906



after





before

## 3804 Brandt

after



before

## 400 Lovett

after



before

2829 Taft

after

3909



before

2829 Taft

after

3910





before

2300 Taft

after

3911



# Dumpsters

## 534 Westheimer

before

3912



after



# Improvement District # 6

Graffiti Abatement

**Before and After Pictures**

**June 29, 2011**



# Business Property

## 1540 Westheimer

before

3913



after



## 1540 Westheimer

before

3914



after



# Public Property

before

3915

## 2000 Commonwealth

after



before

3916

## 1500 Welch

after





before

## 1502 Indiana

after

3917



before

## 2215 Commonwealth

after

3918



before

3919

## 2500 Commonwealth

after



before

3920

## 2700 Commonwealth

after





before

3921

## 2700 Commonwealth

after



before

3922

## 3400 Yoakum

after



## 3520 Yoakum

before

3923



after



## 3520 Yoakum

before

3924



after





## 3700 Yoakum

before

3925



after



## 3700 Yoakum

before

3926



after



## 1200 Alabama

before

3927



after



## 1200 Alabama

before

3928



after





## 1200 Alabama

before

3929



after



## 3700 Woodhead

before

3930



after



before

## 4210 Hazard

after

3931



before

## 3818 McDuffie

after

3932

