

# Montrose District



Graffiti Abatement Reports

---

May 2013

# Montrose District

## Monthly Graffiti Abatement Reports 2013

Abated	Jan	Feb	Mar	Apr	May	June	July	Aug	Sept	Oct	Nov	Dec	2013 Total
Business Property	61	39	31	34	63								228
Public Property	145	102	161	163	153								724
Trash Dumpsters	6	3	8	10	8								35
<b>Total:</b>	<b>212</b>	<b>144</b>	<b>200</b>	<b>207</b>	<b>224</b>								<b>987</b>

Graffiti Abatement Reports Totals 2008 - 2013							
	2008	2009	2010	2011	2012	2013	Totals
<b>Abated</b>							
Business Property	184	98	144	563	522	228	1739
Public Property	538	771	935	1,802	1,724	724	6494
Trash Dumpsters	28	40	48	59	114	35	324
<b>Total:</b>	<b>750</b>	<b>909</b>	<b>1,127</b>	<b>2,424</b>	<b>2,360</b>	<b>987</b>	<b>8557</b>

# Improvement District # 6

Graffiti Abatement

**Before and After Pictures**

**May 2, 2013**

# Private Property



# 1303 Westheimer

before

8334



after



# Public Property

## Dunlavy and Hawthorne

before

8335



after



## Dunlavy and Hawthorne

before

8336



after



## Dunlavy and Hawthorne

before

8337



after



## Dunlavy and Hawthorne

before

8338



after





## 3512 Dunlavy

before

8339



after



## 3712 Dunlavy

before

8340



after



## 3712 Dunlavy

before

8341



after



## 3712 Dunlavy

before

8342



after





## Dunlavy and Kippling

before

8343



after



## Dunlavy and Kippling

before

8344



after



## 3712 Dunlavy

before

8345



after



## 3712 Dunlavy

before

8346



after





## 2600 Woodhead

before

8347



after



## 2600 Woodhead

before

8348



after



## 2600 Woodhead

before

8349



after



## 1700 Westheimer

before

8350



after



## 1800 Westheimer

before

8351



after



## 3400 Mandell

before

8352



after





## 1600 Hawthorne

before

8353



after



## 1600 Hawthorne

before

8354



after



before

8355

## 1600 Hawthorne

after



before

8356

## 1500 Hawthorne

after



## 1500 Hawthorne

before

8357



after



## 1660 Westheimer

before

8358



after





## 1660 Westheimer

before

8359



after



## 3700 Hazard

before

8360



after



before

## 3700 Hazard

after

8361





# Improvement District # 6

Graffiti Abatement

**Before and After Pictures**

**May 6, 2013**

# Private Property

# 1735 Westheimer

before

8362



after



before

8363



after



## Alabama at Dunlavy

before

8364



after



before

8365



after



# Public Property

before

8366

## 1600 Bonnie Brae

after



before

8367

## 1645 Richmond

after





## 1400 Richmond

before

8368



after



## 1400 Richmond

before

8369



after



## 1400 Richmond

before

8370



after



## 4100 Montrose

before

8371



after





## 4100 Montrose

before

8372



after



## 1003 Richmond

before

8373



after



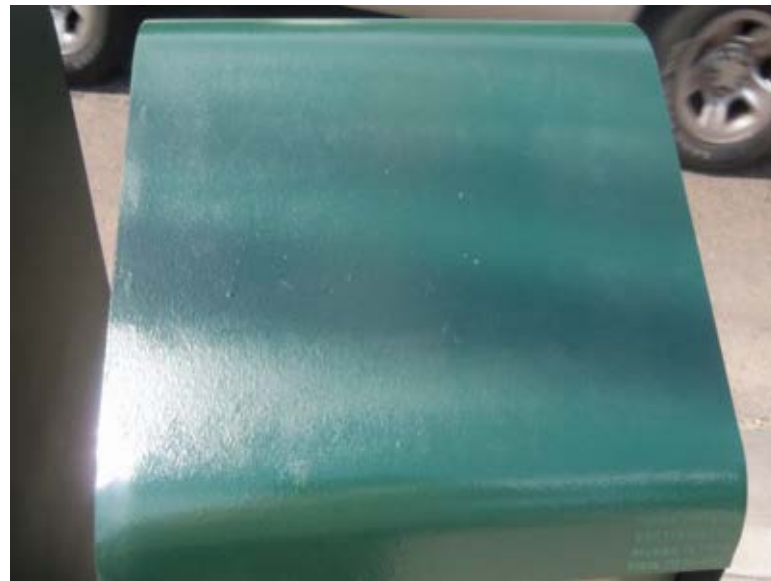
## 1003 Richmond

before

8374



after



## 1003 Richmond

before

8375



after





## 1003 Richmond

before

8376



after



## 1003 Richmond

before

8377



after



# Dumpsters

## 1417 Westheimer

before

8378



after



## 1425 Westheimer

before

8379



after



# Improvement District # 6

Graffiti Abatement

**Before and After Pictures**

**May 9, 2013**

# Public Property



## 2200 Montrose

before

8380



after



## 2200 Montrose

before

8381



after





## 1952a Montrose

before

8382



after



## 2016 Montrose

before

8383



after



## 2100 Montrose

before

8384



after



## 900 Oakley

before

8385



after





## 3300 Mulberry

before

8386



after



## 2401 Commonwealth

before

8387



after



before

8388

## 2527 Commonwealth

after



before

8389

## 2600 Waugh

after





## 1300 Missouri

before

8390



after



## 2001 Waugh

before

8391



after



before

## 1900 Waugh

after

8392



before

## 2600 Yoakum

after

8393





before

1123 Welch

after

8394



before

1101 Peden

after

8395



# Improvement District # 6

Graffiti Abatement

**Before and After Pictures**

**May 13, 2013**



# Private Property

## 4200 McDuffie

before

8396



after



# Public Property

## 1400 Stanford

before

8397



after



## 1400 Stanford

before

8398



after





## 2800 Whitney

before

8399



after



## 2800 Whitney

before

8400



after



## 2800 Stanford

before

8401



after



## 2600 Hopkins

before

8402



after





before

8403

1900 W. Dallas

after

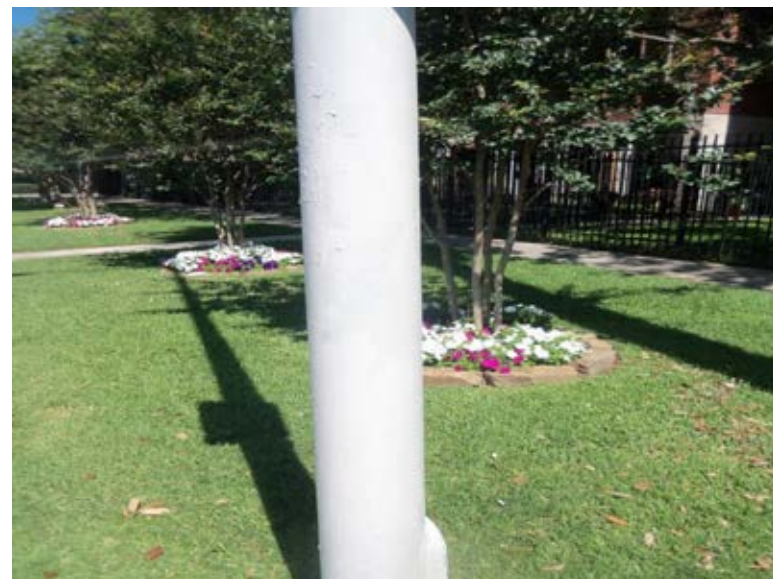


before

8404

400 Lovett

after



## 2800 Whitney

before

8405



after



## 2600 Whitney

before

8406



after





## 400 W. Alabama

before

8407



after



## 516 W Gray

before

8408



after



before

8409

1100 W. Gray

after



before

8410

1100 W. Gray

after





## 1100 Richmond

before

8411



after



## 4300 Dunlavy

before

8412



after



## 4300 Dunlavy

before

8413



after



## 4300 Dunlavy

before

8414



after





## 4300 Dunlavy

before

8415



after



## 4300 Dunlavy

before

8416



after



before

700 Colquitt

after

8417



before

600 Marshall

after

8418





before

## 4000 Garrett

after

8419



before

## 1400 Richmond

after

8420





# Dumpsters

before

1006 Taft

after

8421



before

1400 Hyde Park

after

8422



# Improvement District # 6

Graffiti Abatement

**Before and After Pictures**

**May 16, 2013**



# Private Property

## 503 Westheimer

before

8423



after



## 503 Westheimer

before

8424



after





## 503 Westheimer

before

8425



after



## 503 Westheimer

before

8426



after





before

8427

**503 Westheimer**

after



before

8428

**Richmond @ Dunlavy**

after



# Public Property

## Peden at Dunlavy

before

8429



after



## Dunlavy at W. Grey

before

8430



after





before

8431



## Dunlavy at W. Grey

after



before

8432



## 1522 Dunlay

after



## 1600 Dunlavy

before

8433



after



## 1900 Dunlavy

before

8434



after





## 1900 Vermont

before

8435



after



## 1900 Welch

before

8436



after





before

8437

## Michigan at Dunlavy

after



before

8438

## 2100 Dunlavy

after



## 1600 Westheimer

before

8439



after



## 3300 Dunlavy

before

8440



after





## 2700 Dunlavy

before

8441



after



## 2600 Dunlavy at Harold

before

8442



after





## 2600 Dunlavy

before

8443



after

## 2600 Dunlavy

before

8444



after



## 3606 Dunlavy

before

8445



after



## 3712 Dunlavy

before

8446



after





## Dunlavy at W. Main

before

8447



after



## 4300 Dunlavy at Bonnie Brae

before

8448



after





before

8449



1011 Westheimer

after



before

8450



1011 Westheimer

after



# 1011 Westheimer

before

8451



after



# Improvement District # 6

Graffiti Abatement

**Before and After Pictures**

**May 20, 2013**



# Private Property

## 8803 Dunlavy at Alabama

before

8452



after



## 8803 Dunlavy at Alabama

before

8453



after



## 8803 Dunlavy at Alabama

before

8454



after



## 8803 Dunlavy at Alabama

before

8455



after





## 8803 Dunlavy at Alabama

before

8456



after



## 8803 Dunlavy at Alabama

before

8457



after



## 1637 Westheimer

before

8458



after



## 1633 Westheimer

before

8459



after





## 1633 Westheimer

before

8460



after



## 1633 Westheimer

before

8461



after





## 1623 Westheimer

before

8462



after



## 1417 Westheimer

before

8463



after



## 1417 Westheimer

before

8464



after



## 1417 Westheimer

before

8465



after





## 1303 Westheimer

before

8466



after



## 1303 Westheimer

before

8467



after





# 1232 Westheimer

before

8468



after



# Public Property

## 3700 Dunlavy

before

8469



after



## 1639 Westheimer

before

8470



after





## 1635 Westheimer

before

8471



after



## 1640 Westheimer

before

8472



after



before

2719 Lincoln

after

8473



before

800 Hawthorne

after

8474



## 800 Hawthorne

before

8475



after





# Dumpsters

# 1639 Westheimer

before

8476



after



# Improvement District # 6

Graffiti Abatement

**Before and After Pictures**

**May 23, 2013**



# Private Property

## 1901 S Sheperd

before

8477



after



before

8478



## 3000 Taft

after



## 1601 Richmond

before

8479



after



## 1601 Richmond

before

8480



after





## 1310 Richmond

before

8481



after



## 503 Westheimer

before

8482



after



## 503 Westheimer

before

8483



after



## 3000 Taft

8484



# Public Property



## 1701 Dunlavy

before

8485



after



## 1310 Richmond

before

8486



after



## 1600 Richmond

before

8487



after



## 301 Alabama

before

8488



after





before

## 300 Alabama

after

8489



before

## 503 Westheimer

after

8490





# Dumpsters

before

**3000 Taft**

after

8491



# Improvement District # 6

Graffiti Abatement

**Before and After Pictures**

**May 28, 2013**



# Public Property

## 1900 W Dallas

before

8492



after



## 1900 W Dallas

before

8493



after



before

1006 Taft

after

8494



before

1006 Taft

after

8495





## 1500 Stanford

before

8496



after



## 1500 Stanford

before

8497



after



before

## 3800 Garrett

after

8498



before

## 1500 Stanford

after

8499





before

2900 Taft

after

8500



before

2900 Taft

after

8501





## 1200 Richmond

before

8502



after



## 1200 Richmond

before

8503



after



## 4200 Mandell

before

8504



after



## 4200 Mandell

before

8505



after





## 1600 W Alabama

before

8506



after



## 3700 Roseland

before

8507



after





before

1700 Main

after

8508



before

2500 Woodhead

after

8509



before

## 2500 Yupon

after

8510



before

## 1900 Fairview

after

8511





## 1800 Fairview

before

8512



after



## 1800 Fairview

before

8513



after





## 1800 Fairview

before

8514



after



## 1800 Fairview

before

8515



after



## 2400 Ridgewood

before

8516



after



## 1513 Fairview

before

8517



after





before

8518

1500 Harold

after



before

8519

2700 Yupon

after





## 2700 Yupon at California

before

8520



after



## 2700 Yupon at California

before

8521



after



# Dumpsters

before

1006 Taft

after

8522





# Improvement District # 6

Graffiti Abatement

**Before and After Pictures**

**May 30, 2013**

# Private Property

## 425 Westheimer

before

8523



after



## 3214 Montrose

before

8524



after





## 3221 Montrose

before

8525



after



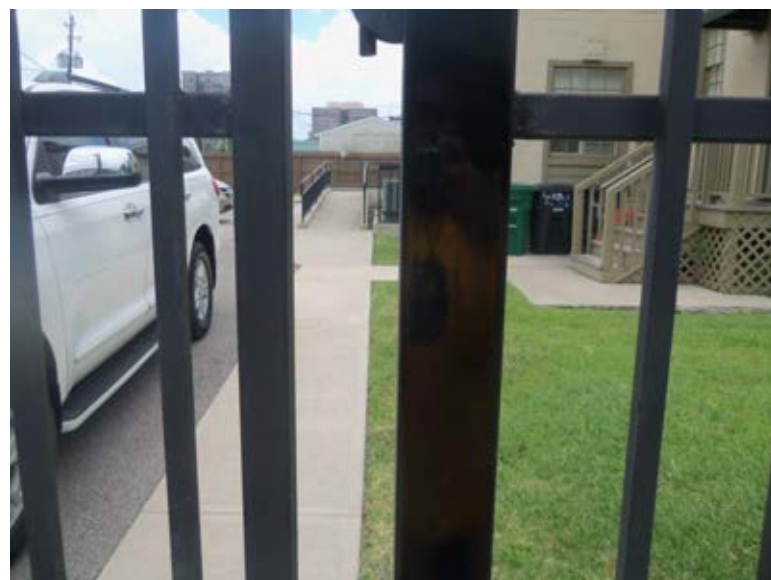
## 1015 Richmond

before

8526



after



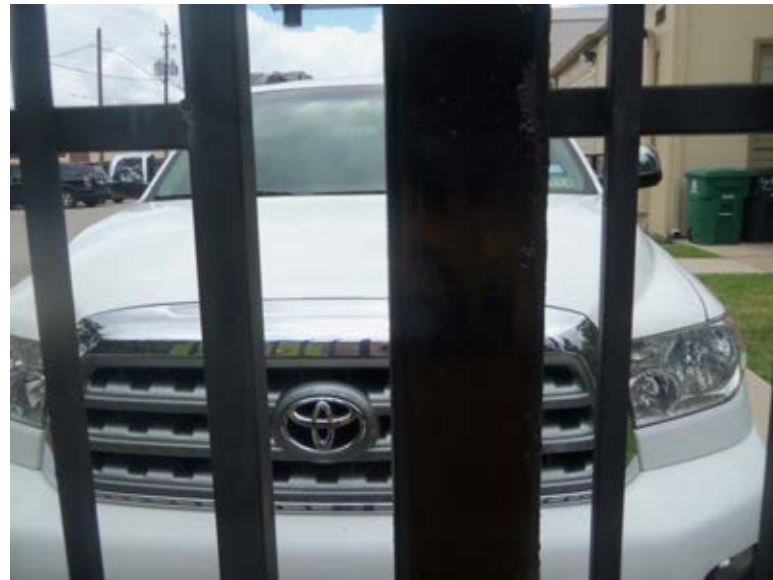
## 1015 Richmond

before

8527



after



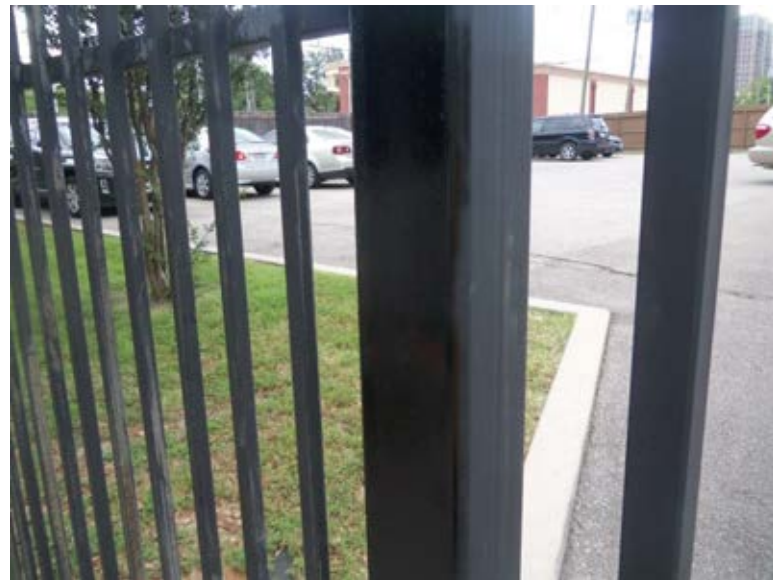
## 1015 Richmond

before

8528



after





## 1015 Richmond

before

8529



after



## 1015 Richmond

before

8530



after





## 1015 Richmond

before

8531



after



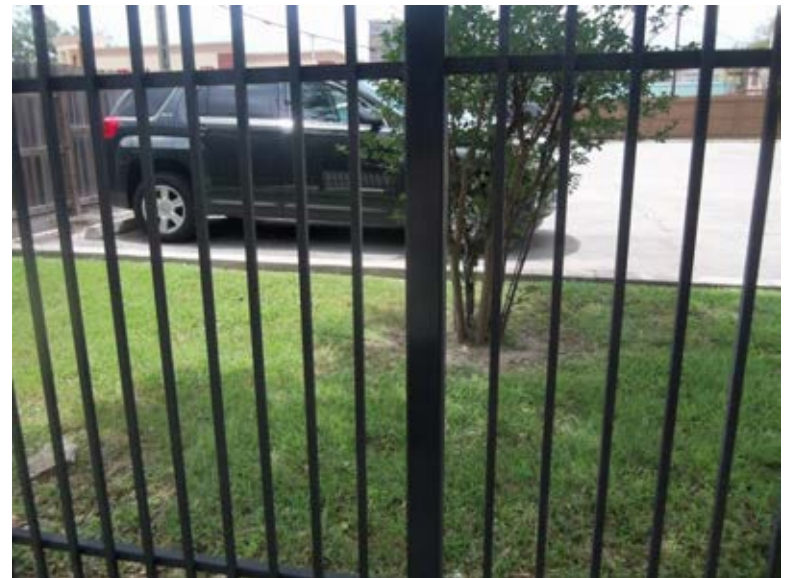
## 1015 Richmond

before

8532



after



## 1015 Richmond

before

8533



after



## 1015 Richmond

before

8534



after





## 1015 Richmond

before

8535



after



## 1015 Richmond

before

8536



after





## 1015 Richmond

before

8537



after



## 1015 Richmond

before

8538



after





## 1015 Richmond

before

8539



after



## 1015 Richmond

before

8540



after





## 1015 Richmond

before

8541



after



## 1015 Richmond

before

8542



after





## 1018 Richmond

before

8543



after



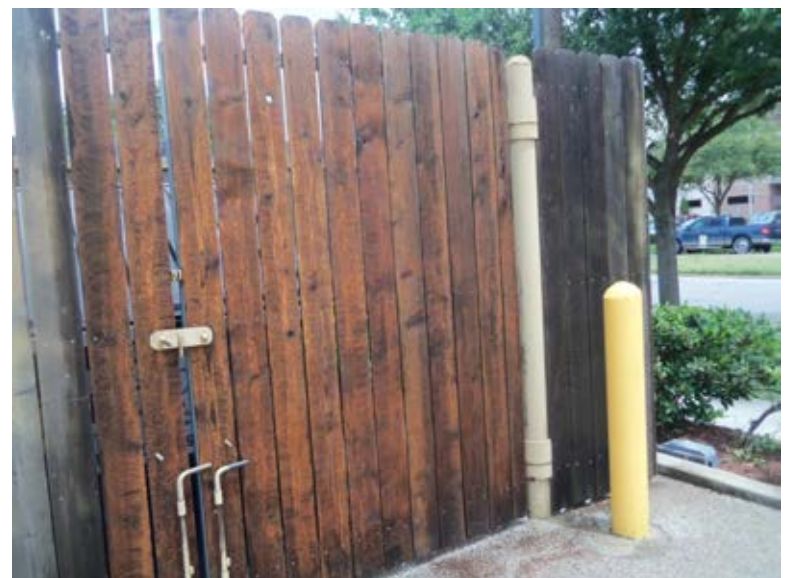
## 1303 Westheimer

before

8544



after



## 1303 Westheimer

before

8545



after



## 1300 Westheimer

before

8546



after





## 3300 Yoakum

before

8547



after



## 3300 Yoakum

before

8548



after





# Public Property

## 900 Woodrobe

before

8549



after



## 1003 Richmond

before

8550



after



## 1003 Richmond

before

8551



after



## 1003 Richmond

before

8552



after





## 1003 Richmond

before

8553



after



## 819 Richmond

before

8554



after



## 1015 Richmond

before

8555



after



## 1927 Woodhead

before

8556



after



# Dumpsters



# 417 Westheimer

before

8557



after

