

Graffiti Abatement Reports

May 2011

Montrose District

Monthly Graffiti Abatement Reports 2011

Abated	Jan	Feb	Mar	Apr	May	June	July	Aug	Sept	Oct	Nov	Dec	2010 Total
Business Property	59	20	21	42	107								249
Public Property	54	85	52	64	334								589
Trash Dumpsters	10	1	5	3	5								24
Total:	123	106	78	109	446								862

Graffiti Abatement Reports Totals 2008 - 2011					
	2008	2009	2010	2011	Totals
Abated					
Business Property	184	98	144	249	675
Public Property	538	771	935	589	2833
Trash Dumpsters	28	40	48	24	140
Total:	750	909	1,127	862	3648

Improvement District # 6

Graffiti Abatement

Before and After Pictures

May 2, 2011

Business Property

1200 Westheimer

before

3203



after



1200 Westheimer

before

3204



after



1200 Westheimer

before

3205



after



1200 Westheimer

before

3206



after



1200 Westheimer

before

3207



after



1216 1/2 Westheimer

before

3208



after



before

3209

1216 1/2 Westheimer

after



before

3210

1216 1/2 Westheimer

after



before

3211



1216 ½ Westheimer

after



before

3212



1303 Westheimer

after



1303 Westheimer

before

3213



after



1303 Westheimer

before

3214



after



Public Property

before

3215

1000 Westheimer

after



before

3216

1000 Westheimer

after



before

2719 Lincoln

after

3217



before

2719 Lincoln

after

3218



before

3219

1026 ½ Westheimer



after



before

3220

1026 ½ Westheimer



after



before

3221

1026 ½ Westheimer

after



before

3222

1026 ½ Westheimer

after



before

3223

1026 ½ Westheimer

after



before

3224

1026 ½ Westheimer

after



before

3225



1026 1/2 Westheimer

after



before

3226



1026 1/2 Westheimer

after



before

3227

1026 1/2 Westheimer

after



before

3228

1026 1/2 Westheimer

after



before

3229



1026 ½ Westheimer

after



before

3230



1100 Westheimer

after



before

3231



1100 Westheimer

after



before

3232



1100 Westheimer

after



before

3233

1100 Westheimer

after



before

3234

1100 Westheimer

after



1200 Westheimer

before

3235



after



1200 Westheimer

before

3236



after



1200 Westheimer

before

3237



after



1200 Westheimer

before

3238



after



1200 Westheimer

before

3239



after



1200 Westheimer

before

3240



after



1200 Westheimer

before

3241



after



1200 Westheimer

before

3242



after



1300 Westheimer

before

3243



after



1300 Westheimer

before

3244



after



1300 Westheimer

before

3245



after



1300 Westheimer

before

3246



after



1300 Westheimer

before

3247



after



1300 Westheimer

before

3248



after



1300 Westheimer

before

3249



after



1300 Westheimer

before

3250



after



1212 Westheimer

before

3251



after



1216 1/2 Westheimer

before

3252



after



before

3253

1216 1/2 Westheimer

after



before

3254

1216 1/2 Westheimer

after



before

3255



1216 1/2 Westheimer

after



before

3256



1216 1/2 Westheimer

after



1303 Westheimer

before

3257



after



1303 Westheimer

before

3258



after



1318 Westheimer

before

3259



after



1318 Westheimer

before

3260



after



1318 Westheimer

before

3261



after



1312 Westheimer

before

3262



after



1312 Westheimer

before

3263



after



Improvement District # 6

Graffiti Abatement

Before and After Pictures

May 5, 2011

Business Property

1616 Montrose

before

3264



after



1616 Montrose

before

3265



after



1330 Westheimer

before

3266



after



1338 Westheimer

before

3267



after



1520 Westheimer

before

3268



after



1520 Westheimer

before

3269



after



1520 Westheimer

before

3270



after



1520 Westheimer

before

3271



after



1520 Westheimer

before

3272



after



1520 Westheimer

before

3273



after



1520 Westheimer

before

3274



after



1520 Westheimer

before

3275



after



1520 Westheimer

before

3276



after



1520 Westheimer

before

3277



after



1520 Westheimer

before

3278



after



1520 Westheimer

before

3279



after



1520 Westheimer

before

3280



after



1520 Westheimer

before

3281



after



1520 Westheimer

before

3282



after



1520 Westheimer

before

3283



after



1735 Westheimer

before

3284



after



1735 Westheimer

before

3285



after



1735 Westheimer

before

3286



after



1735 Westheimer

before

3287



after



1408 1/2 Westheimer

before

3288



after



1408 1/2 Westheimer

before

3289



after



1402 Westheimer - Owner would not allow graffiti abatement.



1402 Westheimer - Owner would not allow graffiti abatement.



1402 Westheimer - Owner would not allow graffiti abatement.



Public Property

before

3290

1616 Montrose

after



before

3291

1616 Montrose

after



before

3292

1616 Montrose

after



before

3293

1338 Westheimer

after



1338 Westheimer

before

3294



after



1338 Westheimer

before

3295



after



1338 Westheimer

before

3296



after



1338 Westheimer

before

3297



after



1500 Westheimer

before

3298



after



1500 Westheimer

before

3299



after



1500 Westheimer

before

3300



after



1500 Westheimer

before

3301



after



1416 Westheimer

before

3302



after



1416 Westheimer

before

3303



after



1400 Westheimer

before

3304



after



1400 Westheimer

before

3305



after



1400 Westheimer

before

3306



after



before

3307

1400 Westheimer – Reported to the City, #129025

after



1400 Westheimer

before

3308



after



Dumpsters

1338 Westheimer

before

3309



after



1338 Westheimer

before

3310



after



Improvement District # 6

Graffiti Abatement

Before and After Pictures

May 6, 2011

Business Property

2301 Montrose

before

3311



after



1700 California

before

3312



after



1540 Westheimer

before

3313



after



1540 Westheimer

before

3314



after



1540 Westheimer

before

3315



after



1540 Westheimer

before

3316



after



1540 Westheimer

before

3317



after



1540 Westheimer

before

3318



after



Public Property

2300 Montrose

before

3319



after



1109 Peden

before

3320



after

Site Completed
Picture Not Available

before

1110 Peden

after

3321



before

1520 Westheimer

after

3322



1520 Westheimer

before

3323



after



1520 Westheimer

before

3324



after



1520 Westheimer

before

3325



after



1520 Westheimer

before

3326



after



before 1520 Westheimer – Reported to the City, # 131749 after

3327



2700 Ridgewood

before

3328



after

1544 Westheimer

before

3329



after



1544 Westheimer

before

3330



after



1544 Westheimer

before

3331



after



1544 Westheimer

before

3332



after



1540 Westheimer

before

3333



after



1500 Westheimer

before

3334



after



Improvement District # 6

Graffiti Abatement

Before and After Pictures

May 9, 2011

Business Property

1638 Westheimer

before

3335



after



1660 Westheimer

before

3336



after



1660 Westheimer

before

3337



after



Public Property

1618 Westheimer

before

3338



after



1618 Westheimer

before

3339



after



1638 Westheimer

before

3340



after



1640 Westheimer

before

3341



after



1600 Westheimer

before

3342



after



1600 Westheimer

before

3343



after



1600 Westheimer

before

3344



after



1660 Westheimer

before

3345



after



1660 Westheimer

before

3346



after



1660 Westheimer

before

3347



after



1660 Westheimer

before

3348



after



1660 Westheimer

before

3349



after



1660 Westheimer

before

3350



after



1660 Westheimer

before

3351



after



1660 Westheimer

before

3352



after



1660 Westheimer

before

3353



after



1660 Westheimer

before

3354



after



1704 Westheimer

before

3355



after



1704 Westheimer

before

3356



after



1704 Westheimer

before

3357



after



1714 Westheimer

before

3358



after



1714 Westheimer

before

3359



after



1704 Westheimer

before

3360



after



1718 Westheimer

before

3361



after



1718 Westheimer

before

3362



after



1726 Westheimer

before

3363



after



1726 Westheimer

before

3364



after



Improvement District # 6

Graffiti Abatement

Before and After Pictures

May 12, 2011

Business Property

1726 Westheimer

before

3365



after



1756 Westheimer

before

3366



after



1756 Westheimer

before

3367



after



1756 Westheimer

before

3368



after



1756 Westheimer

before

3369



after



1756 Westheimer

before

3370



after



1756 Westheimer

before

3371



after



1756 Westheimer

before

3372



after



1800 Westheimer

before

3373



after



Public Property

1729 Westheimer

before

3374



after



1729 Westheimer

before

3375



after



1700 Westheimer

before

3376



after



1700 Westheimer

before

3377



after



1700 Westheimer

before

3378



after



1756 Westheimer

before

3379



after



1756 Westheimer

before

3380



after



1756 Westheimer

before

3381



after



1756 Westheimer

before

3382



after



1756 Westheimer

before

3383



after



1756 Westheimer

before

3384



after



1756 Westheimer

before

3385



after



1800 Westheimer

before

3386



after



1800 Westheimer

before

3387



after



1800 Westheimer

before

3388



after



Improvement District # 6

Graffiti Abatement

Before and After Pictures

May 13, 2011

Business Property

before

3389

1002 Montrose

after



before

3390

2016 Montrose

after



2016 Montrose

before

3391



after



3400 Montrose

before

3392



after



before

315 Alabama

after

3393



before

615 Alabama

after

3394



Public Property

before

3395

1000 Montrose

after



before

3396

1616 Montrose

after



3100 Montrose

before

3397



after



2500 Montrose

before

3398



after



2001 Montrose

before

3399



after



1701 Montrose

before

3400



after



before

3401

1701 Montrose

after



before

3402

3314 Taft

after



before

3314 Taft

after

3403



before

3314 Taft

after

3404



before

412 Lovett

after

3405



before

400 Marshall

after

3406



before

315 Alabama

after

3407



before

301 Alabama

after

3408



before

301 Alabama

after

3409



before

600 Richmond

after

3410



before

3411

600 Richmond

after



before

3412

600 Richmond

after



4310 Greely St.

before

3413



after



Improvement District # 6

Graffiti Abatement

Before and After Pictures

May 17, 2011

Business Property

before

1900 Westheimer Rd.

after

3414



before

1900 Westheimer Rd.

after

3415



before

3416

1900 Westheimer Rd.

after



before

3417

1900 Westheimer Rd.

after



before

3418

1900 Westheimer Rd.

after



before

3419

1801 Westheimer

after



Public Property

before

3420

1900 Westheimer Rd.

after



before

3421

1900 Westheimer Rd.

after



before

3422

1900 Westheimer Rd.

after



before

3423

1900 Westheimer Rd.

after



before

3424

1900 Westheimer Rd.

after



before

3425

1900 Westheimer Rd.

after



before

3426

1900 Westheimer Rd.

after



before

3427

2000 Westheimer

after



2100 Westheimer

before

3428



after



2100 Westheimer

before

3429



after



2075 Westheimer

before

3430



after



2075 Westheimer

before

3431



after



1905 Westheimer

before

3432



after



1905 Westheimer

before

3433



after



1905 Westheimer

before

3434



after



1905 Westheimer

before

3435



after



1905 Westheimer

before

3436



after



1905 Westheimer

before

3437



after



1905 Westheimer

before

3438



after



1800 Westheimer

before

3439



after



1800 Westheimer

before

3440



after



1800 Westheimer

before

3441



after



1800 Westheimer

before

3442



after



1800 Westheimer

before

3443



after



1800 Westheimer

before

3444



after



1801 Westheimer

before

3445



after



1801 Westheimer

before

3446



after



1801 Westheimer

before

3447



after



1801 Westheimer

before

3448



after



1801 Westheimer

before

3449



after



1801 Westheimer

before

3450



after



1801 Westheimer

before

3451



after



1801 Westheimer

before

3452



after



1801 Westheimer

before

3453



after



1801 Westheimer

before

3454



after



1801 Westheimer

before

3455



after



1801 Westheimer

before

3456



after



1801 Westheimer

before

3457



after



1759 Westheimer

before

3458



after



1759 Westheimer

before

3459



after



1759 Westheimer

before

3460



after



1759 Westheimer

before

3461



after



Improvement District # 6

Graffiti Abatement

Before and After Pictures

May 19, 2011

Business Property

1624 Richmond

before

3462



after



1824 Richmond

before

3463



after



1826 Richmond

before

3464



after



2000 Richmond

before

3465



after



1925 Richmond

before

3466



after



1839 Richmond

before

3467



after



1839 Richmond

before

3468



after



1827 Richmond

before

3469



after



before

A black metal fence with a wooden post and a yellow date stamp '05/15/2010 03:42 PM' is visible in the background. The fence is made of vertical black metal bars. A wooden post is attached to the fence. A yellow date stamp is visible in the upper right corner of the image.

before

Public Property

before

3472

1100Richmond

after



before

3473

1100 Richmond

after



1100 Richmond

before

3474



after



1200 Richmond

before

3475



after



1200 Richmond

before

3476



after



1200 Richmond

before

3477



after



1300 Richmond

before

3478



after



1300 Richmond

before

3479



after



1310 Richmond

before

3480



after



1310 Richmond

before

3481



after



1400 Richmond

before

3482



after



1400 Richmond

before

3483



after



1400 Richmond

before

3484



after



1400 Richmond

before

3485



after



1604 Richmond

before

3486



after



1604 Richmond

before

3487



after



1644 Richmond

before

3488



after



1644 Richmond

before

3489



after



1650 Richmond

before

3490



after



1810 Richmond

before

3491



after



1810 Richmond

before

3492



after



1624 Richmond

before

3493



after



1826 Richmond

before

3494



after



1846 Richmond

before

3495



after



1801 Richmond

before

3496



after



1749 Richmond

before

3497



after



1749 Richmond

before

3498



after



1749 Richmond

before

3499



after



1800 Richmond

before

3500



after



1643 Richmond

before

3501



after



1643 Richmond

before

3502



after



1613 Richmond

before

3503



after



1415 Richmond

before

3504



after



1415 Richmond

before

3505



after



Improvement District # 6

Graffiti Abatement

Before and After Pictures

May 20, 2011

Business Property

1003 Richmond

before

3506



after



4512 Montrose

before

3507



after



1735 Westheimer

before

3508



after



1735 Westheimer

before

3509



after



Public Property

before

3510

1100 Kenwood

after



before

3511

1003 Richmond

after



1003 Richmond

before

3512



after



1003 Richmond

before

3513



after



4518 Montrose

before

3514



after



1800 Westheimer

before

3515



after



1800 Westheimer

before

3516



after



1800 Westheimer

before

3517



after



1609 Westheimer

before

3518



after



1609 Westheimer

before

3519



after



1609 Westheimer

before

3520



after



1661 Westheimer

before

3521



after



1661 Westheimer

before

3522



after



1661 Westheimer

before

3523



after



1661 Westheimer

before

3524



after



1661 Westheimer

before

3525



after



1661 Westheimer

before

3526



after



1732 Westheimer

before

3527



after



1732 Westheimer

before

3528



after



1732 Westheimer

before

3529



after



1732 Westheimer

before

3530



after



1732 Westheimer

before

3531



after



Improvement District # 6

Graffiti Abatement

Before and After Pictures

May 23, 2011

Business Property

1742 Westheimer

before

3532



after



1742 Westheimer

before

3533



after



1665 Westheimer

before

3534



after



1665 Westheimer

before

3535



after



1639 Westheimer

before

3536



after



1639 Westheimer

before

3537



after



1639 Westheimer

before

3538



after



1639 Westheimer

before

3539



after



1639 Westheimer

before

3540



after



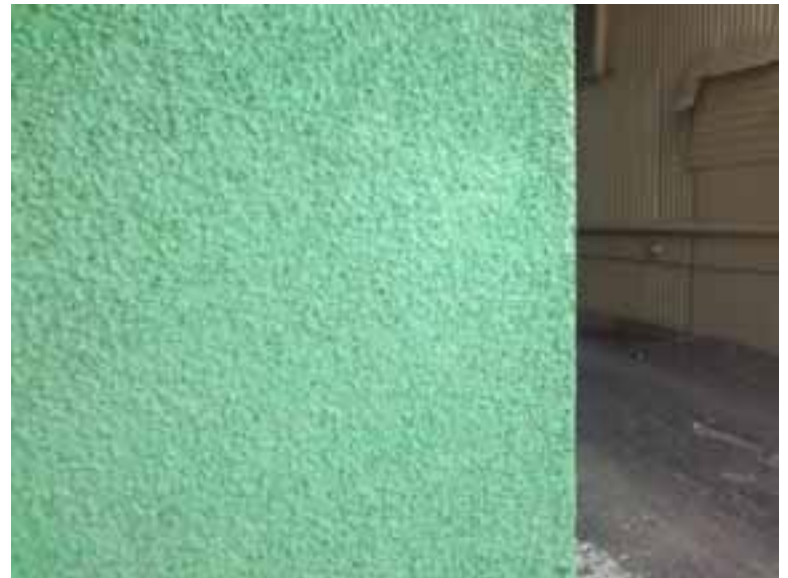
1637 Westheimer

before

3541



after



1637 Westheimer

before

3542



after



1637 Westheimer

before

3543



after



1637 Westheimer

before

3544



after



Public Property

1800 Westheimer

before

3545



after



1900 Westheimer

before

3546



after



1800 Westheimer

before

3547



after



1831 Westheimer

before

3548



after



1820 Westheimer

before

3549



after



1820 Westheimer

before

3550



after



1820 Westheimer

before

3551



after



1808 Westheimer

before

3552



after



1715 Westheimer

before

3553



after



1715 Westheimer

before

3554



after



1665 Westheimer

before

3555



after



1645 Westheimer

before

3556



after



1645 Westheimer

before

3557



after



1645 Westheimer

before

3558



after



before
3559

1645 Westheimer – Reported to the City, #147795

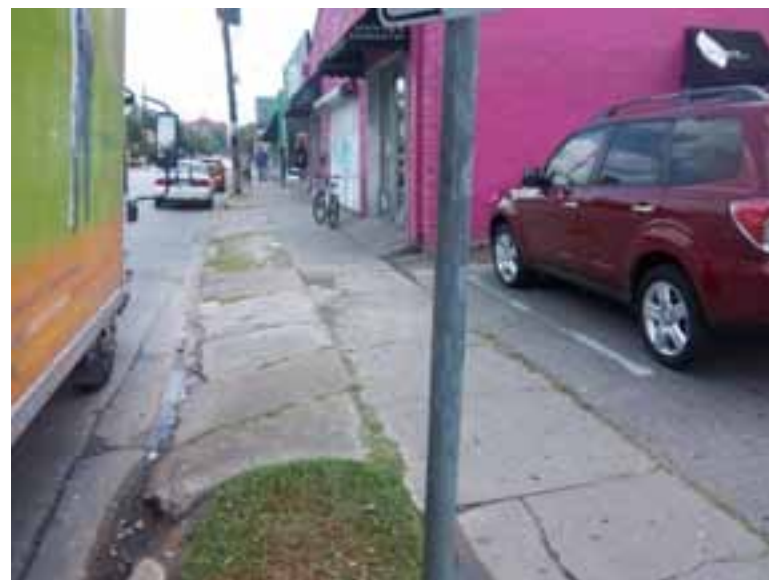
after



before
3560

1645 Westheimer

after



1645 Westheimer

before

3561



after



1637 Westheimer

before

3562



after



1637 Westheimer

before

3563



after



Improvement District # 6

Graffiti Abatement

Before and After Pictures

May 26, 2011

Business Property

1610 Richmond

before

3564



after



1612 Richmond

before

3565



after



1540 Westheimer

before

3566



after



1540 Westheimer

before

3567



after



Public Property

1310 Richmond

before

3568



after



1309 Richmond

before

3569



after



1310 Richmond

before

3570



after



1320 Richmond

before

3571



after



1320 Richmond

before

3572



after



1320 Richmond

before

3573



after



1320 Richmond

before

3574



after



1400 Richmond

before

3575



after



1400 Richmond

before

3576



after



1405 Richmond

before

3577



after



1409 Richmond

before

3578



after



1500 Richmond

before

3579



after



1520 Richmond

before

3580



after



1600 Richmond

before

3581



after



1600 Richmond

before

3582



after



1600 Richmond

before

3583



after



1604 Richmond

before

3584



after



1614 Richmond

before

3585



after



1614 Richmond

before

3586



after



1701 Richmond

before

3587



after



1701 Richmond

before

3588



after



1701 Richmond

before

3589



after



Improvement District # 6

Graffiti Abatement

Before and After Pictures

May 27, 2011

Business Property

before

2900 Taft

after

3590



Public Property

before

3591

1976 W. Dallas

after



before

3592

900 Stanford

after



2600 Montrose

before

3593



after



2600 Montrose

before

3594



after



2600 Montrose

before

3595



after



2600 Montrose

before

3596



after



before

3597

2600 Montrose

after



before

3598

920 Richmond

after



3407 Montrose

before

3599



after



900 Westheimer

before

3600



after



before

3601

Montrose and W. Gray

after



before

3602

Montrose and W. Gray

after



1100 Stanford

before

3603



after



702 W. Gray

before

3604



after



1500 Stanford

before

3605



after



1500 Stanford

before

3606



after



before

2300 Taft

after

3607



before

2700 Taft

after

3608



before

3609

327 Westheimer

after



before

3610

327 Westheimer

after



3700 Stanford

before

3611



after



400 Lovett

before

3612



after



Dumpsters

before

1006 Taft

after

3613



before

602 W. Alabama

after

3614



602 W. Alabama

before

3615



after



Improvement District # 6

Graffiti Abatement

Before and After Pictures

May 31, 2011

Business Property

2500 Montrose

before

3616



after



1003 Westheimer

before

3617



after



1003 Westheimer

before

3618



after



4200 Montrose

before

3619



after



912 Westheimer

before

3620



after



Public Property

before

3621

2500 Montrose

after



before

3622

Montrose and Westheimer

after



before

3623

926 Westheimer

after



before

3624

2710 Westheimer

after



before

3625

3200 Montrose

after



before

3626

3400 Montrose

after



before

3627



3400 Montrose

after



before

3628



3400 Montrose

after



3400 Montrose

before

3629



after



1010 Alabama

before

3630



after



4003 Montrose

before

3631



after



4003 Montrose

before

3632



after



4003 Montrose

before

3633



after



4001 Montrose

before

3634



after



before

3635

4116 Montrose

after



before

3636

4116 Montrose

after



4116 Montrose

before

3637



after



4116 Montrose

before

3638



after



before

3639

900 Westheimer

after



before

3640

900 Westheimer

after



3100 Montrose

before

3641



after



1711 Montrose

before

3642



after



1711 Montrose

before

3643



after



1711 Montrose

before

3644



after



before

3645

1701 Montrose

after



before

3646

1701 Montrose

after



before

301 Alabama

after

3647



before

303 Alabama

after

3648

