

Montrose District



Graffiti Abatement Reports

April 2015

Montrose District

Monthly Graffiti Abatement Reports 2015

Abated	Jan	Feb	Mar	Apr	May	June	July	Aug	Sept	Oct	Nov	Dec	2015 Total
Business Property	60	51	75	67									253
Public Property	190	195	213	225									823
Trash Dumpsters	6	6	8	9									29
Total:	256	252	296	301									1105

Graffiti Abatement Reports Totals 2008 - 2015									
	2008	2009	2010	2011	2012	2013	2014	2015	Totals
Abated									
Business Property	184	98	144	563	522	467	747	253	2,978
Public Property	538	771	935	1,802	1,724	1839	2356	823	10,788
Trash Dumpsters	28	40	48	59	114	84	82	29	484
Total:	750	909	1,127	2,424	2,360	2,390	3,185	1105	14,250

Improvement District # 6

Graffiti Abatement

Before and After Pictures

April 1, 2015

Private Property

1600 Westheimer

before

13950



after



1600 Westheimer

before

13951



after



1600 Westheimer

before

13952



after



1600 Westheimer

before

13953



after



1600 Westheimer

before

13954



after



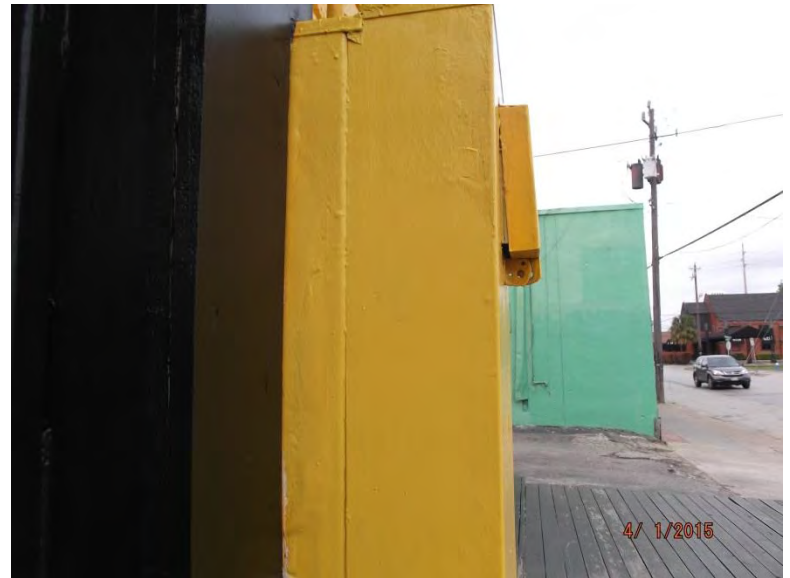
1600 Westheimer

before

13955



after



1600 Westheimer

before

13956



after



1600 Westheimer

before

13957



after



1600 Westheimer

before

13958



after



1600 Westheimer

before

13959



after



1600 Westheimer

before

13960



after



600 Westheimer

before

13961



after



600 Westheimer

before

13962



after



600 Westheimer

before

13963



after



before

13964

600 Westheimer

after



Public Property

1300 Westheimer

before

13965



after



1200 Westheimer

before

13966



after



1700 Westheimer

before

13967



after



1700 Westheimer

before

13968



after



before

13969

500 Lovett

after



before

13970

500 Lovett

after



before

3100 Montrose

after

13971



before

1000 Westheimer

after

13972



1100 Westheimer

before

13973



after



3700 Yoakum

before

13974



after



3700 Yoakum

before

13975



after



3700 Yoakum

before

13976



after



1200 Westheimer

before

13977



after



3700 Graustark

before

13978



after



Improvement District # 6

Graffiti Abatement

Before and After Pictures

April 6, 2015

Private Property

before

13979

400 Westheimer

after



before

13980

400 Westheimer

after



400 Westheimer

before

13981



after



400 Westheimer

before

13982



after



1600 Westheimer

before

13983



after



1600 Westheimer

before

13984



after



1600 Westheimer

before

13985



after



1600 Westheimer

before

13986



after



before

13987

2600 Waugh

after



before

13988

2600 Waugh

after



2703 Montrose

before

13989



after



Public Property

400 Westheimer

before
13990



after



400 Westheimer

before
13991



after



3200 Stanford

before

13992



after



3200 Stanford

before

13993



after



3400 Audubon

before

13994



after



3400 Audubon

before

13995



after



before
13996

3400 Audubon

after



before
13997

1300 Westheimer

after



1400 Westheimer

before

13998



after



2600 Waugh

before

13999



after



1300 Hude Park

before

14000



after



1400 Richmond

before

14001



after



1600 Richmond

before

14002



after



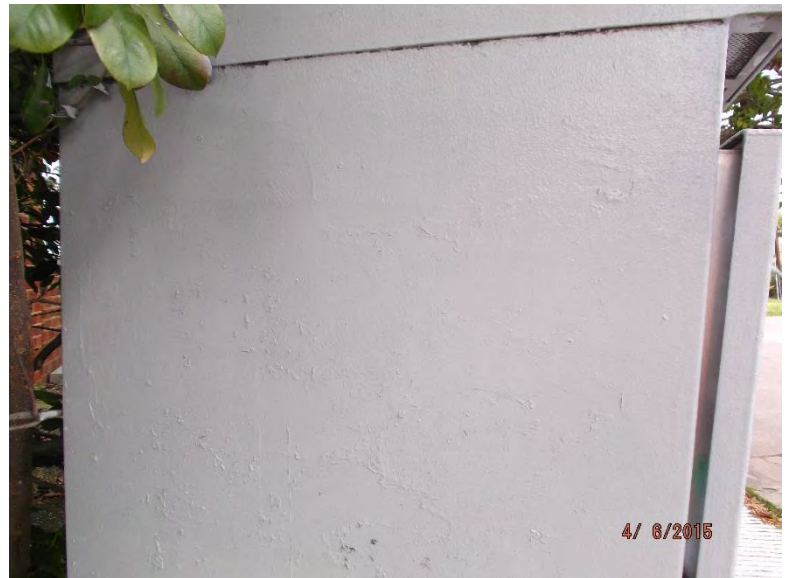
1600 Richmond

before

14003



after



1600 Richmond

before

14004



after



1600 Richmond

before

14005



after



before

14006



2200 Waugh

after



before

14007



2200 Waugh

after



before

14008

2100 Waugh

after



before

14009

2100 Waugh

after



before

14010

2100 Waugh

after



before

14011

2100 Waugh

after



before

14012

2100 Waugh

after



before

14013

2100 Waugh

after



before

14014

1700 Common Wealth

after



before

14015

2400 Common Wealth

after



before

2400 Common Wealth

after

14016



before

1300 Westheimer

after

14017



before
14018

600 W. Gray

after



before
14019

1600 Stanford

after



Improvement District # 6

Graffiti Abatement

Before and After Pictures

April 9, 2015

Private Property

before

14020

1111 Drew

after



before

14021

1111 Drew

after



1432 Hawthorne

before

14022



after



1432 Hawthorne

before

14023



after



1820 Richmond

before

14024



after



1411 Alabama

before

14025



after



1411 Alabama

before

14026



after



1411 Alabama

before

14027



after



1003 Westheimer

before

14028



after



1111 Missouri

before

14029



after



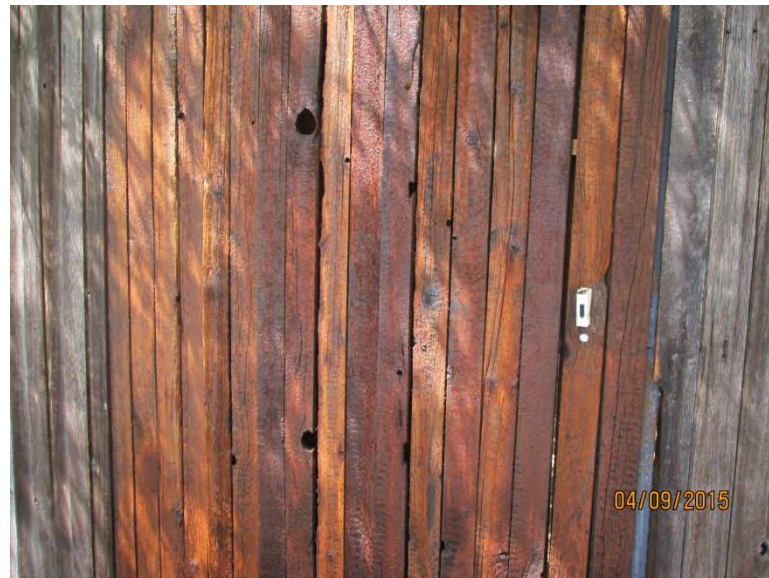
1108 Missouri

before

14030



after



2400 Montrose

before

14031



after



before

14032

2510 Commonwealth

after



before

14033

2510 Commonwealth

after



before
14034

2515 Commonwealth

after



1320 Westheimer

14035



Public Property

1100 Westheimer

before

14036



after



2700 Waughcrest

before

14037



after



1000 Westheimer

before

14038



after



1000 Westheimer

before

14039



after



1000 Westheimer

before

14040



after



1000 Westheimer

before

14041



after



1100 Missouri

before

14042



after



2200 Van Buren

before

14043



after



before

14044

1600 Waugh

after



before

14045

2500 Commonwealth

after



Dumpsters

1411 Alabama

before

14046



after



Improvement District # 6

Graffiti Abatement

Before and After Pictures

April 13, 2015

Private Property

1517 Westheimer

before

14047



after



1302 Westheimer

before

14048



after



Public Property

Westheimer at Mandell

before

14049



after



1600 Westheimer

before

14050



after



1500 Westheimer

before

14051



after



1500 Westheimer

before

14052



after



1500 Westheimer

before

14053



after



1500 Westheimer

before

14054



after



1500 Westheimer

before

14055



after



1200 Westheimer

before

14056



after



1300 Westheimer

before

14057



after



1700 Westheimer

before

14058



after



1800 Westheimer

before

14059



after



2500 Hazard

before

14060



after



before

14061

2500 Hazard

after



before

14062

1800 Westheimer

after



before

14063

2500 Morse

after



before

14064

1800 Fairview

after



before
14065

Shepherd at Fairview

after



before
14066

3700 Shepherd

after



4300 Woodhead

before

14067



after



4300 Woodhead

before

14068



after



before

14069

1900 Waugh

after



before

14070

Welch at Waugh

after



before

14071

Waugh at Welch

after



before

14072

Waugh at Welch

after



before

14073



Waugh at W Gray

after



before

14074



Waugh at W Gray

after



before

14075



Waugh at W Gray

after



before

14076



Waugh at W Gray

after

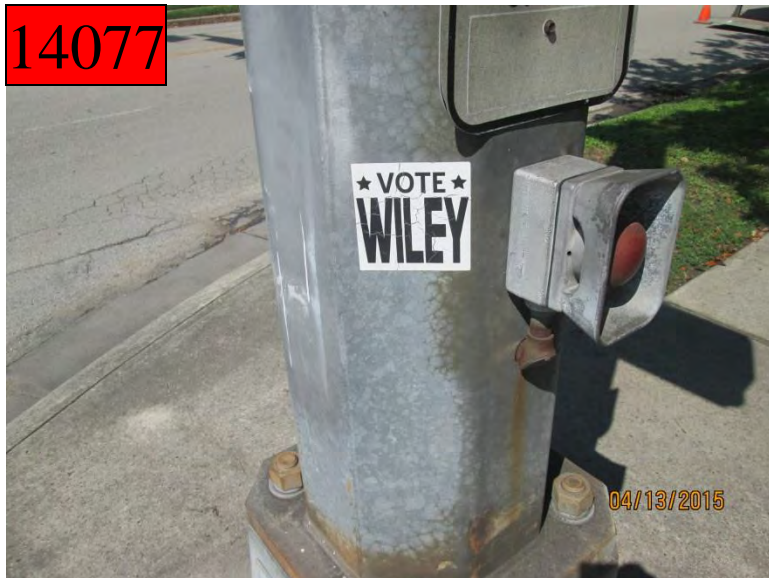


before

14077

700 Waugh

after



before

14078

700 Waugh

after



Waugh at D'amico

before

14079



after



Waugh at D'amico

before

14080



after



Waugh at D'amico

before

14081



after



before

14082



Waugh at D'amico

after



3100 D'amico

before

14083



after



3100 D'amico

before

14084



after



Waugh at D'amico

before

14085



after



before

14086



3300 Taft

after



Dumpsters

before

14087

1701 Commonwealth

after



Improvement District # 6

Graffiti Abatement

Before and After Pictures

April 17, 2015

Private Property

1635 Westheimer

before

14088



after



1635 Westheimer

before

14089



after



1635 Westheimer

before

14090



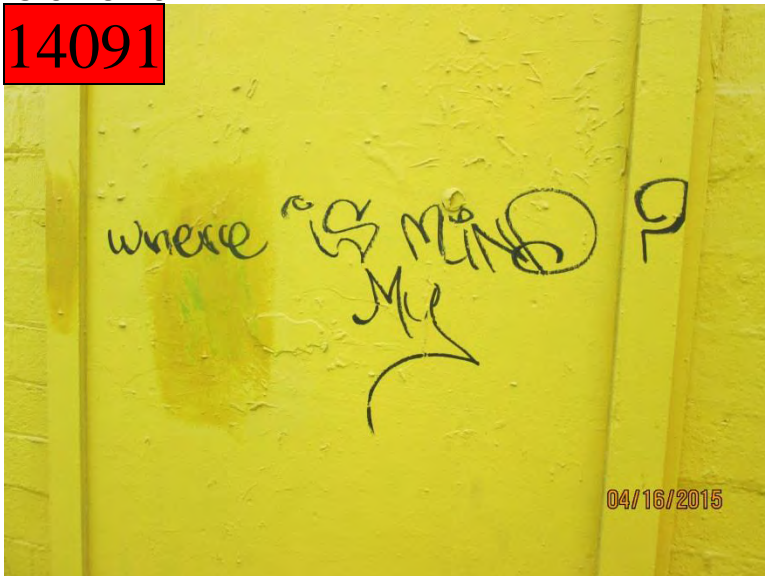
after



1635 Westheimer

before

14091



after



1637 Westheimer

before

14092



after



1637 Westheimer

before

14093



after



1639 Westheimer

before

14094



after



1627 Westheimer

before

14095



after



1627 Westheimer

before

14096



after



before

14097



1918 Taft

after



1609 Westheimer

before

14098



after



1540 Westheimer

before

14099



after



Public Property

1600 Westheimer

before

14100



after



1600 Westheimer

before

14101



after



1500 Westheimer

before

14102



after



1500 Westheimer

before

14103



after



1700 Fairview

before

14104



after



1400 Hawthorne

before

14105



after



before

14106



3400 Yupon

after



before

14107



3700 Yupon

after



1400 Alabama

before

14108



after



3600 Mulberry

before

14109



after



3300 Graustark

before

14110



after



2700 Commonwealth

before

14111



after



1500 Missouri

before

14112



after



1500 Missouri

before

14113



after



Dumpsters

2710 Waughcrest

before

14114



after



1544 Westheimer

before

14115



after



Improvement District # 6

Graffiti Abatement

Before and After Pictures

April 20, 2015

Public Property

before

14116



300 W Gray

after



before

14117



500 W Gray

after



before

14118



1000 Peden

after



before

14119



2500 Stanford

after



before

14120

400 Westheimer

after



before

14121

400 Westheimer

after



before

14122

400 Lovett

after



before

14123

500 Lovett

after



before

3600 Audubon

after

14124



before

600 Marshall

after

14125



1200 Westheimer

before

14126



after



1500 Hazard

before

14127



after



before

14128



1100 Westheimer

after



before

14129



1100 Westheimer

after



2600 Dunlavy

before

14130



after



2700 Dunlavy

before

14131



after



2700 Dunlavy

before

14132



after



2700 Dunlavy

before

14133



after



1000 Richmond

before

14134



after



1000 Richmond

before

14135



after



before

14136



1900 W Gray

after



before

14137



1900 W Gray

after



before

14138



1900 Waugh

after



before

14139



1900 Waugh

after



before

14140



1800 Waugh

after



before

14141



1800 Waugh

after



before

14142

1800 Waugh

after



before

14143

800 W Drew

after



1800 Fairview

before

14144



after



1800 Fairview

before

14145



after



before

14146



1400 Crocker

after



before

14147



1400 Crocker

after



Dumpsters

before

14148

1900 Peden

after



before

14149

1900 Peden

after



Improvement District # 6

Graffiti Abatement

Before and After Pictures

April 23, 2015

Private Property

1544 Westheimer

before

14150



after



1550 Westheimer

before

14151



after



1550 Westheimer

before

14152



after



1540 Westheimer

before

14153



after



before

14154

1404 Welch

after



Public Property

3600 Mandell

before

14155



after



1500 Westheimer

before

14156



after



1600 Westheimer

before

14157



after



1600 Westheimer

before

14158



after



1600 Westheimer

before

14159



after



1700 Indiana

before

14160



after



before

14161

2300 Montrose

after



before

14162

3800 Brandt

after



600 Richmond

before

14163



after



4800 Montrose

before

14164



after



before

after



2700 Lincoln

after



before

14167

2700 Lincoln

after



before

14168

3200 Graustark

after



3400 Mulberry

before

14169



after



1300 Westheimer

before

14170



after



1300 Westheimer

before

14171



after



2700 Commonwealth

before

14172



after



before

14173



1900 Waugh

after



before

14174



1400 Welch

after



before

14175

1800 Commonwealth

after



before

14176

1800 Commonwealth

after



Dumpsters

before

14177



2700 Lincoln

after



before

14178



1400 Hawthorne

after



Improvement District # 6

Graffiti Abatement

Before and After Pictures

April 27, 2015

Private Property

1300 California

before

14179



after



1100 W Gray

before

14180



after



Public Property

before

14181



800 W Drew

after



before

14182



800 W Drew

after



before

3600 Audubon

after

14183



before

2600 Grant

after

14184



before

14185

2700 Montrose

after



before

14186

2600 Waugh

after



before

14187



2600 Waugh

after



before

14188



2600 Waugh

after



before

14189



2600 Waugh

after



before

14190



1400 Westheimer

after



4000 Woodhead

before

14191



after



4000 Woodhead

before

14192



after



4700 Graustark

before

14193



after



1300 Vassar

before

14194



after



before

14195

4000 Montrose

after



before

14196

2400 Waugh

after



before

14197

2000 Commonwealth

after



before

14198

2000 Commonwealth

after



before

14199



1500 Peden

after



before

14200



1500 Hazard

after



before
14201

1200 Peden

after



before
14202

1100 Peden

after



before
14203

800 W Clay

after



before
14204

1100 Welch

after



before

14205

1100 Welch

after



Improvement District # 6

Graffiti Abatement

Before and After Pictures

April 30, 2015

Private Property

1200 Westheimer

before

14206



after



1200 Westheimer

before

14207



after



1200 Westheimer

before

14208



after



1500 Westheimer

before

14209



after



Public Property

600 Hawthorne

before

14210



after



3300 Taft

before

14211



after



before

14212

1000 Westheimer

after

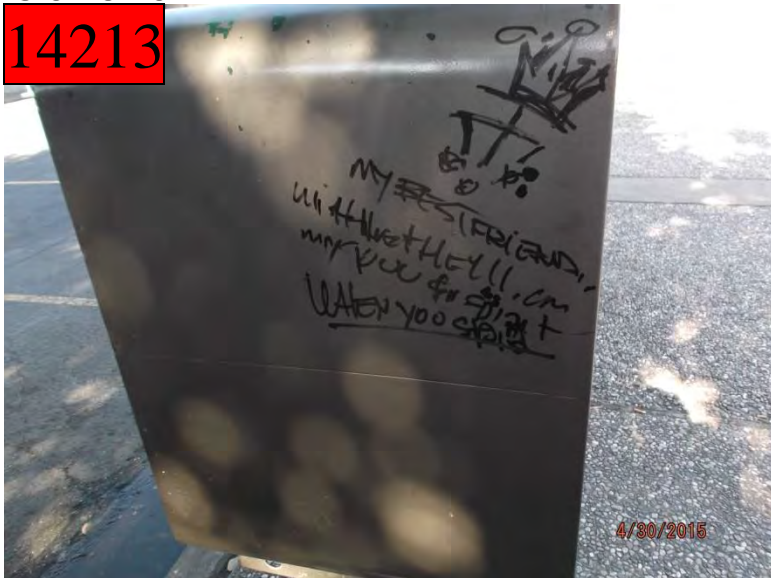


before

14213

1000 Westheimer

after



1000 Westheimer

before

14214



after



1000 Westheimer

before

14215



after

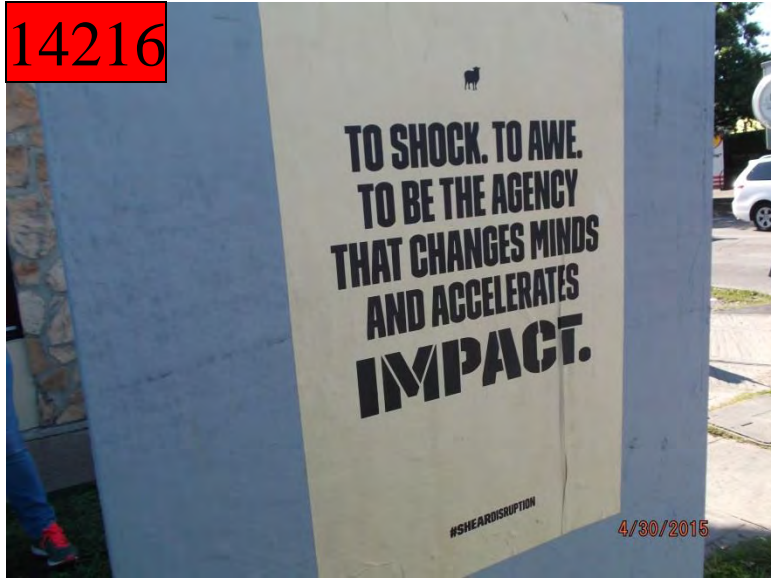


before

3100 Montrose

after

14216



before

3100 Montrose

after

14217



before

3100 Montrose

after

14218



before

3100 Montrose

after

14219



before

14220



1000 Westheimer

after



before

14221



1000 Westheimer

after



1000 Westheimer

before

14222



after



1300 Westheimer

before

14223



after



1200 Westheimer

before

14224



after



1200 Westheimer

before

14225



after



1200 Westheimer

before

14226



after



1200 Westheimer

before

14227



after



before

14228



1200 Westheimer

after



before

14229



1200 Westheimer

after



1200 Westheimer

before

14230



after



1500 Westheimer

before

14231



after



1500 Westheimer

before

14232



after



1800 Westheimer

before

14233



after



1800 Westheimer

before

14234



after



1700 W Alabama

before

14235



after



before

14236



1700 W Alabama

after



before

14237



1700 W Alabama

after



before

14238

1700 W Alabama

after



before

14239

1700 W Alabama

after



1800 W Alabama

before

14240



after



1500 W Alabama

before

14241



after



4300 Woodhead

before

14242



after



4300 Woodhead

before

14243

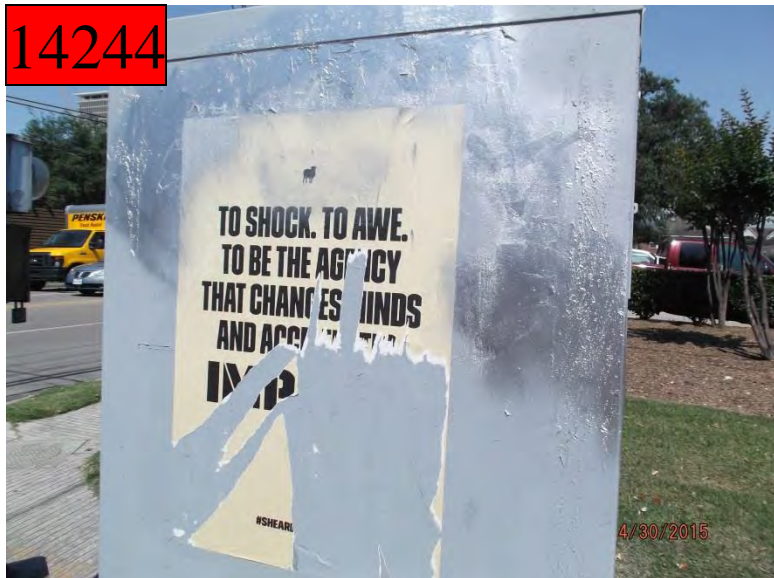


after



before

14244



1000 Waugh

after



before

14245



1000 Waugh

after



1000 Dunlavy

before

14246



after



1000 Dunlavy

before

14247



after



1000 Dunlavy

before

14248



after



1200 Fairview

before

14249



after



Dumpsters

before

2005 Southwest Fwy

after

14250

