

# Montrose District



Graffiti Abatement Reports

---

April 2014

# Montrose District

## Monthly Graffiti Abatement Reports 2014

Abated	Jan	Feb	Mar	Apr	May	June	July	Aug	Sept	Oct	Nov	Dec	2013 Total
Business Property	66	41	48	71									226
Public Property	136	177	167	116									596
Trash Dumpsters	3	6	10	4									23
<b>Total:</b>	<b>205</b>	<b>224</b>	<b>225</b>	<b>191</b>									<b>845</b>

Graffiti Abatement Reports Totals 2008 - 2014								
	2008	2009	2010	2011	2012	2013	2014	Totals
<b>Abated</b>								
Business Property	184	98	144	563	522	467	226	<b>2204</b>
Public Property	538	771	935	1,802	1,724	1839	596	<b>8205</b>
Trash Dumpsters	28	40	48	59	114	84	23	<b>396</b>
<b>Total:</b>	<b>750</b>	<b>909</b>	<b>1,127</b>	<b>2,424</b>	<b>2,360</b>	<b>2,390</b>	<b>845</b>	<b>10,805</b>

# Improvement District # 6

Graffiti Abatement

**Before and After Pictures**

**April 3, 2014**

# Private Property

## 4403 Woodhead

before

10615



after



## 2501 Dunlavy

before

10616



after





## 1613 Westheimer

before

10617



after



## 1613 Westheimer

before

10618



after



## 3225 Montrose

before

10619



after



# Public Property



before

3918 McDuffie

after

10620



before

1911 W Alabama

after

10621



## 1725 W Alabama

before

10622



after



## 1660 Westheimer

before

10623



after



## 1745 W Alabama

before

10624



after



## 1743 W Alabama

before

10625



after





## 1660 Westheimer

before

10626



after



## 1660 Westheimer

before

10627



after



## 1800 Fairview

before

10628



after



## 2101 Dunlavy

before

10629



after



## 2101 Dunlavy

before

10630



after



## 2030 Dunlavy

before

10631



after





## 2015 Dunlavy

before

10632



after



## 2027 Dunlavy

before

10633



after



# Improvement District # 6

Graffiti Abatement

**Before and After Pictures**

**April 7, 2014**

# Private Property

before

10634

1400 Welch

after



before

10635

1501 Montrose

after





## 2200 Montrose

before

10636



after



## 2200 Montrose

before

10637



after



# Public Property



## 4200 Mandell

before

10638



after



## 1000 Waugh

before

10639



after



before

10640

## 1800 Commonwealth

after



before

10641

## 1800 Commonwealth

after



before

10642

**1500 Welch**

after



before

10643

**2516 Commonwealth**

after





before

10644

2600 Waugh

after



before

10645

2000 Waugh

after



before

10646

2000 Waugh

after



before

10647

2000 Waugh

after





before  
10648

1000 Willard

after



before  
10649

1501 Montrose

after





## 2200 Montrose

before

10650



after



## 900 Fairview

before

10651



after



# Dumpsters

before

10652

## 1701 Commonwealth

after



# Improvement District # 6

Graffiti Abatement

**Before and After Pictures**

**April 10, 2014**

# Private Property

## 1430 Hawthorne

before

10653



after



## 1430 Hawthorne

before

10654



after





## 2050 Dunlavy

before

10655



after



## 2050 Dunlavy

before

10656



after



## 2050 Dunlavy

before

10657



after



## 2050 Dunlavy

before

10658



after



## 2050 Dunlavy

before

10659



after



## 1635 Westhiemer

before

10660



after





## 1637 Westthierner

before

10661



after



## 1637 Westthierner

before

10662



after





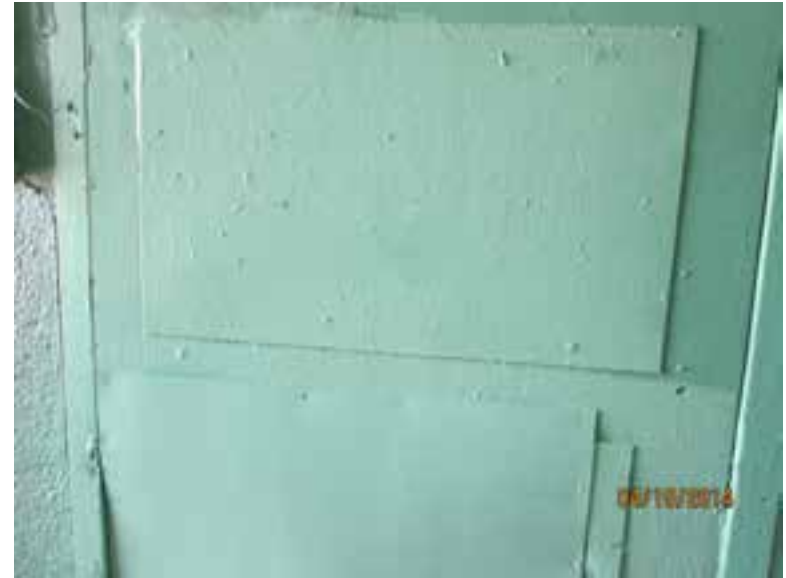
## 1637 Westhiemer

before

10663



after



## 1637 Westhiemer

before

10664



after



## 1637 Westhiemer

before

10665



after



## 1627 Westhiemer

before

10666



after



# Public Property

## 4925 Graustark

before

10667



after



## 4800 Graustark

before

10668



after





before

10669

1100 Banks

after



before

10670

1100 Banks

after



before

10671

## 1100 Banks

after



before

10672

## 1100 Chelsea

after





before

10673

1100 Chelsea

after



before

10674

3812 Yoakum

after



## 2050 Dunlavy

before

10675



after





# Improvement District # 6

Graffiti Abatement

**Before and After Pictures**

**April 14, 2014**

# Private Property

## 4215 Woodhead

before

10676



after



## 4215 Woodhead

before

10677



after



# Public Property



before

10678

## 3300 Mandel

after



before

10679

## Hawthorne at Dunlavy

after



## 1801 Alabama

before

10680



after



## 3700 Woodhead

before

10681



after



## 3700 Woodhead

before

10682



after



## 3700 Woodhead

before

10683



after





## 1800 W Alabama

before

10684



after



## 4500 Mandell

before

10685



after





before

10686

2300 Waugh

after



before

10687

1100 Drew

after



## 4300 Stanford

before

10688



after



## 1407 Richmond

before

10689



after





## 1407 Richmond

before

10690



after



## 403 Westheimer

before

10691



after



# 300 Westheimer

before

10692



after





# Improvement District # 6

Graffiti Abatement

**Before and After Pictures**

**April 17, 2014**

# Private Property

before

10693

## 1900 Waugh

after



before

10694

## 1400 W Alabama

after



# Public Property



before

10695

200 Welch

after



before

10696

200 Welch

after



## 1000 W Drew

before

10697



after



## 1000 W Drew

before

10698



after



before

10699

1200 Welch

after



before

10700

1900 Waugh

after





before

10701

1400 Welch

after



before

10702

1400 Welch

after





before

10703

1400 Welch

after



before

10704

1400 Welch

after



before  
10705

## 1500 Commonwealth

after



before  
10706

## 1500 Commonwealth

after



before

10707

1500 Welch

after



before

10708

1500 Welch

after





before  
10709

1500 Welch

after



before  
10710

1400 Welch

after





before

10711



2600 Waugh

after



before

10712



500 Pacific

after



before  
10713

400 Westheimer

after



before  
10714

400 Westheimer

after



before

10715



800 Lovett

after



before

10716



800 Lovett

after





## 1900 Fairview

before

10717



after



## 1900 Fairview

before

10718



after





## 2400 Woodhead

before

10719



after



## 1500 Stanford

before

10720



after



## 1500 Stanford

before

10721



after



## 1500 Stanford

before

10722



after



# Improvement District # 6

Graffiti Abatement

**Before and After Pictures**

**April 21, 2014**

# Private Property



before

10723

4300 Yupon

after



before

10724

4300 Yupon

after



# Public Property

## 1300 Westheimer

before

10725



after



## 4000 Milam

before

10726



after



## 1300 Westheimer

before

10727



after



## 4000 Milam

before

10728



after





before

10729

4000 Milam

after



before

10730

4000 Milam

after



before

10731

## 4000 Milam

after



before

10732

## 4000 Bute

after



before

10733



3804 Brandt

after



before

10734



3804 Brandt

after





before

10735

3804 Brandt

after



before

10736

4300 Yupon

after





before

10737

## Richmond at Yupon

after



before

10738

## 1100 Richmond

after



## 4400 Graustark

before

10739



after



## 4500 Graustark

before

10740



after



before

10741

4219 Greely

after



before

10742

700 Richmond

after





before

10743

4200 Greely

after



before

10744

3900 Milam

after





before

10745



300 Branard

after



before

10746



3815 Garrett

after



# Dumpsters

before

10747

417 Westheimer

after



before

10748

417 Westheimer

after



# Improvement District # 6

Graffiti Abatement

**Before and After Pictures**

**April 24, 2014**



# Private Property

## 1637 Westheimer

before

10749



after



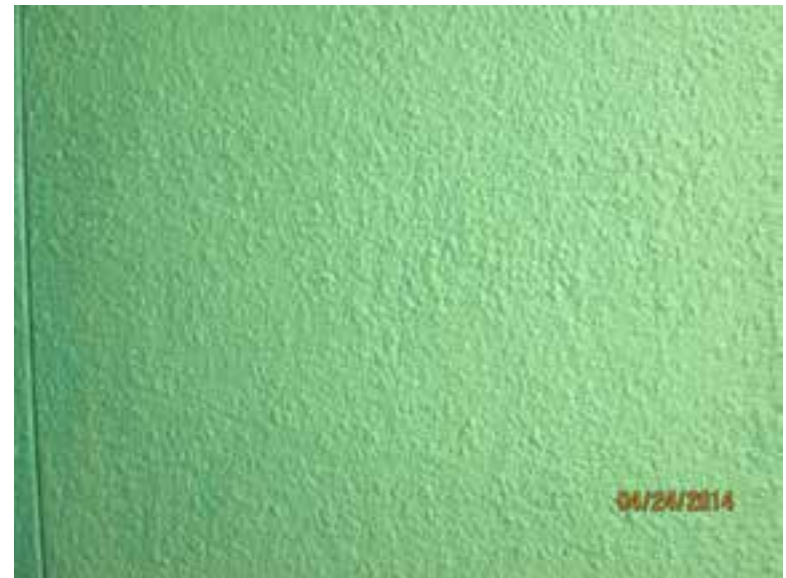
## 1637 Westheimer

before

10750



after



## 1637 Westheimer

before

10751



after



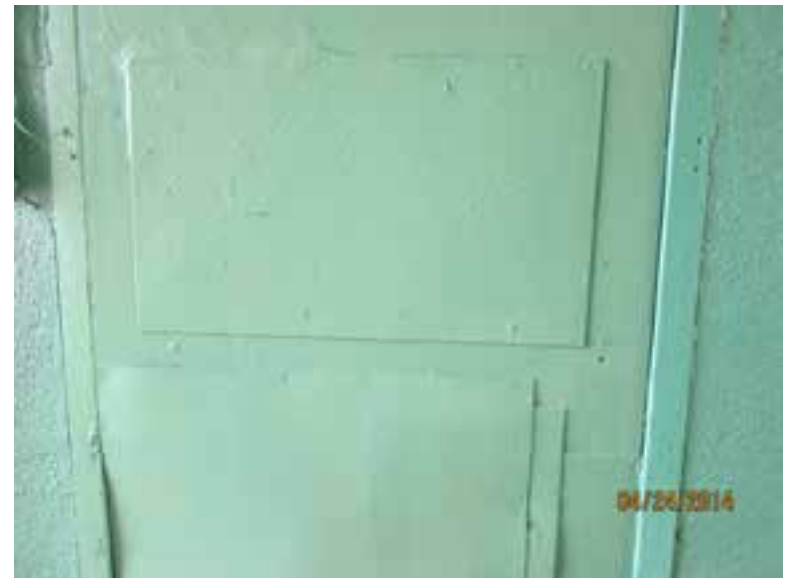
## 1637 Westheimer

before

10752



after



## 1637 Westheimer

before

10753



after



## 1639 Westheimer

before

10754



after





## 1639 Westheimer

before

10755



after



## 1639 Westheimer

before

10756



after



## 1639 Westheimer

before

10757



after



## 1637 Westheimer

before

10758



after



## 1635 Westheimer

before

10759



after



## 1635 Westheimer

before

10760



after



## 1627 Westheimer

before

10761



after



## 1627 Westheimer

before

10762



after





## 1627 Westheimer

before

10763



after



## 1627 Westheimer

before

10764



after



## 1627 Westheimer

before

10765



after



## 1635 Westheimer

before

10766



after



## 1641 Westheimer

before

10767



after



## 1641 Westheimer

before

10768



after





## 1641 Westheimer

before

10769



after



## 1641 Westheimer

before

10770



after





## 1641 Westheimer

before

10771



after



## 1641 Westheimer

before

10772



after



## 1641 Westheimer

before

10773



after



## 1643 Westheimer

before

10774



after



## 1643 Westheimer

before

10775



after



## 1657 Westheimer

before

10776



after





## 1657 Westheimer

before

10777



after



## 1657 Westheimer

before

10778



after





# Improvement District # 6

Graffiti Abatement

**Before and After Pictures**

**April 28, 2014**

# Private Property

## 1657 Westheimer

before

10779



after



## 1657 Westheimer

before

10780



after



## 1657 Westheimer

before

10781



after



## 1657 Westheimer

before

10782



after





## 1657 Westheimer

before

10783



after



## 1657 Westheimer

before

10784



after



## 1657 Westheimer

before

10785



after



## 1657 Westheimer

before

10786



after





## 1641 Westheimer

before

10787



after



## 1641 Westheimer

before

10788



after



## 1657 Westheimer

before

10789



after



## 1657 Westheimer

before

10790



after





# Public Property

## 2200 Dunlavy

before

10791



after



## 2400 Dunlavy

before

10792



after



## 2600 Dunlavy

before

10793



after



## 3600 Dunlavy

before

10794



after



## 2700 Dunlavy

before

10795



after



## 2700 Dunlavy

before

10796



after





## 3700 Dunlavy

before

10797



after



## 3600 Dunlavy

before

10798



after



before

10799

## 4200 Hazard

after



before

10800

## 4200 Hazard

after



before

10801

## 4200 Hazard

after



before

10802

## 1800 Richmond

after





before

10803

## 4200 Hazard

after



before

10804

## 1800 Richmond

after





# Dumpsters

# 1657 Westheimer

before

10805



after

