

Montrose District



Graffiti Abatement Reports

April 2012

Montrose District

Monthly Graffiti Abatement Reports 2012

Abated	Jan	Feb	Mar	Apr	May	June	July	Aug	Sept	Oct	Nov	Dec	2012 Total
Business Property	74	42	47	41									204
Public Property	105	135	182	158									580
Trash Dumpsters	7	10	8	15									40
Total:	186	187	237	214									824

Graffiti Abatement Reports Totals 2008 - 2012						
	2008	2009	2010	2011	2012	Totals
Abated						
Business Property	184	98	144	563	204	1193
Public Property	538	771	935	1802	580	4626
Trash Dumpsters	28	40	48	59	40	215
Total:	750	909	1,127	2,424	824	6,034

Improvement District # 6

Graffiti Abatement

Before and After Pictures

April 2, 2012

Business Property

1425 Westheimer

before

5821



after



1425 Westheimer

before

5822



after



1417 Westheimer

before

5823



after



1417 Westheimer

before

5824



after



1417 Westheimer

before

5825



after



Public Property

before

3900 Hazard

after

5826



before

3900 McDuffie

after

5827



before

5828



3900 McDuffie

after



before

5829



3819 McDuffie

after



before

2700 Huldry

after

5830



before

2700 Huldry

after

5831



before

5832

3500 McDuffie

after



before

5833

3900 Driscoll

after



1800 Sul Ross

before

5834



after



1912 Sul Ross

before

5835



after



before

2900 Huldry

after

5836



before

2000 Marshall

after

5837



3500 McDuffie

before

5838



after



3501 McDuffie

before

5839



after



before

2001 Harold

after

5840



Dumpsters

1425 Westheimer

before

5841



after



1425 Westheimer

before

5842



after



1425 Westheimer

before

5843



after



1425 Westheimer

before

5844



after



Improvement District # 6

Graffiti Abatement

Before and After Pictures

April 5, 2012

Business Property

3200 Montrose

before

5845



after



Public Property

before

1000 Clay

after

5846



before

1000 Clay

after

5847



before

1000 Clay

after

5848



before

1000 Clay

after

5849



before

1000 Clay

after

5850



before

2200 W. Dallas

after

5851



before

300 W. Bell

after

5852



before

1500 Taft

after

5853



before

1500 Taft

after

5854



before

1500 Taft

after

5855



1400 Stanford

before

5856



after



1400 Stanford

before

5857



after



1400 Stanford

before

5858



after



1600 Stanford

before

5859



after



1600 Stanford

before

5860



after



1600 Stanford

before

5861



after



900 Hawthorne

before

5862



after



900 Hawthorne

before

5863



after



before

414 Lovett

after

5864



before

414 Lovett

after

5865



1500 Stanford

before

5866



after



1500 Stanford

before

5867



after



1424 Crocker

before

5868



after



700 W. Clay

before

5869



after



before

3700 Flora

after

5870



before

4200 Greeley

after

5871



before

600 W. Clay

after

5872



Dumpsters

before

614 W. Gray

after

5873



before

614 W. Gray

after

5874



before

5875



1300 Montrose

after



before

5876



1300 Montrose

after



Improvement District # 6

Graffiti Abatement

Before and After Pictures

April 9, 2012

Business Property

1637 Westheimer

before

5877



after



1637 Westheimer

before

5878



after



before

4404 Yupon

after

5879



before

4404 Yupon

after

5880



Public Property

1900 Hawthorne

before

5881



after



2518 Hazard

before

5882



after



before

2518 Hazard

after

5883



before

2400 Huldy

after

5884



before

2400 Huldry

after

5885



before

2000 Fairview

after

5886



2000 Fairview

before

5887



after



1844 Harold

before

5888



after



1900 Hawthorne

before

5889



after



Hazard and Westheimer

before

5890



after



Hazard and Westheimer

before

5891



after



4100 Mandell

before

5892



after



before

5893



4404 Yupon

after



before

5894



1601 Sul Ross

after



Dumpsters

2036 Westheimer

before

5895



after



1637 Westheimer

before

5896



after



Improvement District # 6

Graffiti Abatement

Before and After Pictures

April 12, 2012

Business Property

1417 Westheimer

before

5897



after



1417 Westheimer

before

5898



after



1417 Westheimer

before

5899



after



before

5900



1417 Westheimer – site abated, image not available

after

1435 Hawthorne

before

5901



after



before

5902

1424 Westheimer – site abated, image not available



after

1428 Westheimer

before

5903



after



before

5904



1722 Taft

after



before

1722 Taft

after

5905



before

1722 Taft

after

5906



before

1722 Taft

after

5907



before

1722 Taft

after

5908



Public Property

before

2829 Taft

after

5909



before

2829 Taft

after

5910



before

2829 Taft

after

5911



before

2829 Taft

after

5912



100 Hyde Park

before

5913



after



1413 Westheimer

before

5914



after



1413 Westheimer

before

5915



after



1413 Westheimer

before

5916



after



before

3815 Garrot

after

5917



before

300 W. Gray

after

5918



Dumpsters

1425 Westheimer

before

5919



after



Improvement District # 6

Graffiti Abatement

Before and After Pictures

April 16, 2012

Public Property

before

5920



2100 Commonwealth

after



before

5921



1800 Indian

after



Improvement District # 6

Graffiti Abatement

Before and After Pictures

April 19, 2012

Business Property

1728 Richmond

before

5922



after



Public Property

before

1500 Welch

after

5923



before

1501 Welch

after

5924



before

5925

1901 Commonwealth

after



before

5926

1400 Westheimer

after



1400 Westheimer

before

5927



after



1400 Westheimer

before

5928



after



1900 Fairview

before

5929



after



2301 Woodhead

before

5930



after



1800 Van Buren

before

5931



after



2701 Ridgewood

before

5932



after



2701 Ridgewood

before

5933



after



1500 Westheimer

before

5934



after



1500 Westheimer

before

5935



after



2700 Ridgewood

before

5936



after



before

2622 Hazard

after

5937



before

3500 Woodhead

after

5938



1800 Alabama

before

5939



after



1801 Richmond

before

5940



after



before

4520 Hazard

after

5941



before

1800 Portsmouth

after

5942



before

5943

3800 Woodhead

after



Improvement District # 6

Graffiti Abatement

Before and After Pictures

April 21, 2012

Business Property

before

5944

3321 Roseland

after



before

5945

3321 Roseland

after



Public Property

before

5946

300 Westheimer

after



before

5947

300 Westheimer

after



before

3314 Taft

after

5948



before

3314 Taft

after

5949



100 Hawthorne

before

5950



after



3400 Garrot

before

5951



after



4026 Roseland

before

5952



after



4026 Roseland

before

5953



after



3900 Roseland

before

5954



after



3814 Roseland

before

5955



after



before

5956

3500 Roseland

after



before

5957

3400 Roseland

after



before

5958



3321 Roseland

after



before

5959



500 Westheimer

after



600 Westheimer

before

5960



after



3700 Stanford

before

5961



after



Improvement District # 6

Graffiti Abatement

Before and After Pictures

April 23, 2012

Business Property

1400 Westheimer

before

5962



after



1400 Westheimer

before

5963



after



1400 Westheimer

before

5964



after



1306 Westheimer

before

5965



after



1306 Westheimer

before

5966



after



1322 Westheimer

before

5967



after



1322 Westheimer

before

5968



after



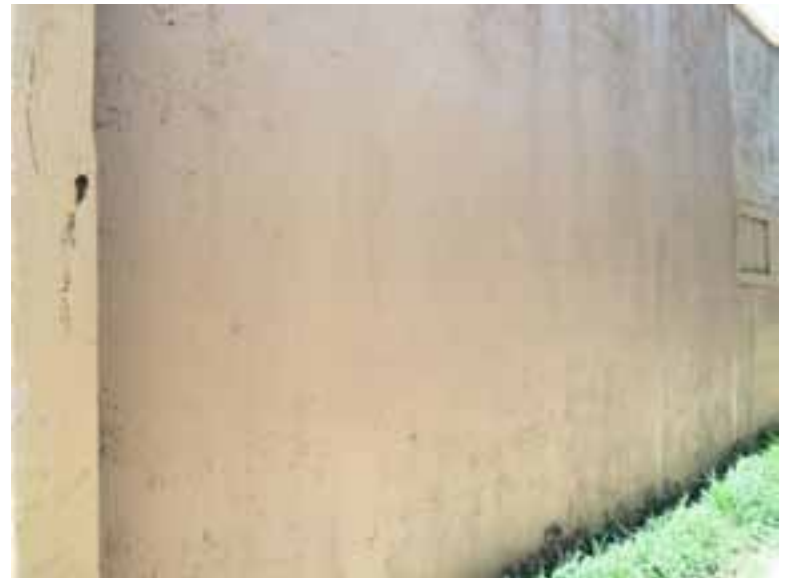
1322 Westheimer

before

5969



after



Public Property

1400 Westheimer

before

5970



after



1400 Westheimer

before

5971



after



1400 Westheimer

before

5972



after



1300 Westheimer

before

5973



after



1300 Westheimer

before

5974



after



1300 Westheimer

before

5975



after



1322 Westheimer

before

5976



after



1322 Westheimer

before

5977



after



before

2600 Hazard

after

5978



before

2600 Hazard

after

5979



before

2610 Hazard

after

5980



before

2611 Hazard

after

5981



before

5982

1900 Hawthorne – site abated, image not available

after



before

5983

3600 Hazard

after



4507 Grausstark

before

5984



after



before

5985

4300 Grausstark – site abated, image not available

after



4300 Grausstark and Southwest Fwy

before

5986



after



4300 Grausstark and Southwest Fwy

before

5987



after



Dumpsters

1400 Westheimer

before

5988



after



Improvement District # 6

Graffiti Abatement

Before and After Pictures

April 26, 2012

Business Property

1732 Westheimer

before

5989



after



before

5990



2500 Park

after



before

5991

417 Westheimer

after



before

5992

417 Westheimer

after



before

5993



417 Westheimer

after



before

5994



1413 Westheimer

after



1413 Westheimer

before

5995



after



1424 Westheimer

before

5996



after



Public Property

1732 Westheimer

before

5997



after



1732 Westheimer

before

5998



after



1732 Westheimer

before

5999



after



1732 Westheimer

before

6000



after



1732 Westheimer

before

6001



after



1732 Westheimer

before

6002



after



1732 Westheimer

before

6003



after



1732 Westheimer

before

6004



after



before

2500 Park

after

6005



before

2400 Huldry

after

6006



before

1532 Peden

after

6007



before

1532 Peden

after

6008



Dumpsters

before

2500 Park

after

6009



before

2500 Park

after

6010



425 Westheimer

before

6011



after



Improvement District # 6

Graffiti Abatement

Before and After Pictures

April 30, 2012

Public Property

2000 Richmond

before

6012



after



2000 Richmond

before

6013



after



2000 Richmond

before

6014



after



2000 Richmond

before

6015



after



2000 Richmond

before

6016



after



3603 Shepherd

before

6017



after



3603 Shepherd

before

6018



after



3603 Shepherd

before

6019



after



3603 Shepherd

before

6020



after



3603 Shepherd

before

6021



after



3603 Shepherd

before

6022



after



1900 Richmond

before

6023



after



1900 Richmond

before

6024



after



1800 Richmond

before

6025



after



1800 Richmond

before

6026



after



1800 Richmond

before

6027



after



1800 Richmond

before

6028



after



1800 Richmond

before

6029



after



1600 Richmond

before

6030



after



1600 Richmond

before

6031



after



1600 Richmond

before

6032



after



1600 Richmond

before

6033



after



1600 Richmond

before

6034



after

