

Montrose District



Graffiti Abatement Reports

March 2012

Montrose District

Monthly Graffiti Abatement Reports 2012

Abated	Jan	Feb	Mar	Apr	May	June	July	Aug	Sept	Oct	Nov	Dec	2012 Total
Business Property	74	42	47										163
Public Property	105	135	182										422
Trash Dumpsters	7	10	8										25
Total:	186	187	237										610

Graffiti Abatement Reports Totals 2008 - 2012						
	2008	2009	2010	2011	2012	Totals
Abated						
Business Property	184	98	144	563	163	1152
Public Property	538	771	935	1802	422	4468
Trash Dumpsters	28	40	48	59	25	200
Total:	750	909	1,127	2,424	610	5,820

Improvement District # 6

Graffiti Abatement

Before and After Pictures

March 2, 2012

Business Property

2003 Alabama

before

5584



after



2003 Alabama

before

5585



after



1420 Westheimer

before

5586



after



1432 Hawthorne

before

5587



after



1432 Hawthorne

before

5588



after



1432 Hawthorne

before

5589



after



1432 Hawthorne

before

5590



after



534 Westheimer

before

5591



after



534 Westheimer

before

5592



after



300 Westheimer

before

5593



after



323 Westheimer

before

5594



after



Public Property

2000 Stanford

before

5595



after



3818 McDuffie

before

5596



after



before

5597



3900 McDuffie

after



before

5598



3900 McDuffie

after



before

4300 Kyle

after

5599



before

4300 Kyle

after

5600



before

4300 Kyle

after

5601



before

300 Westheimer

after

5602



before

2400 Taft

after

5603



Dumpsters

1420 Westheimer

before

5604



after



1420 Westheimer

before

5605



after



1420 Westheimer

before

5606



after



Improvement District # 6

Graffiti Abatement

Before and After Pictures

March 5, 2012

Business Property

2043 Richmond

before

5607



after



1701 Westheimer

before

5608



after



1701 Westheimer

before

5609



after



1701 Westheimer

before

5610



after



1735 Westheimer

before

5611



after



1735 Westheimer

before

5612



after



Mandell and Westheimer

before

5613



after



1710 California

before

5614



after



before

1702 Indiana

after

5615



Public Property

1100 Richmond

before

5616



after



1100 Richmond

before

5617



after



1100 Richmond

before

5618



after



1601 Richmond

before

5619



after



before

1600 Richmond – site abated, picture not available

after

5620



before

4316 Woodhead

after

5621



before

4200 Hazard

after

5622



before

2001 Richmond

after

5623



2001 Richmond

before

5624



after



1745 Richmond

before

5625



after



4300 Grausstark

before

5626



after



1600 Alabama

before

5627



after



1700 Westheimer

before

5628



after



Mandel and Westheimer

before

5629



after



Mandell and Westheimer

before

5630



after



1800 Missouri

before

5631



after



1900 Vermont

before

5632



after



1660 Westheimer

before

5633



after



1662 Westheimer

before

5634



after



Improvement District # 6

Graffiti Abatement

Before and After Pictures

March 9, 2012

Business Property

1402 Westheimer

before

5635



after



2100 Montrose

before

5636



after



Public Property

before

2829 Taft

after

5637



before

2300 Montrose

after

5638



2300 Montrose

before

5639



after



4500 Graustark

before

5640



after



4500 Graustark and Southwest Fwy

before

5641



after



4502 Graustark

before

5642



after



4504 Graustark

before

5643



after



4507 Graustark

before

5644



after



4500 Graustark

before

5645



after



4501 Graustark

before

5646



after



2501 Montrose

before

5647



after



2501 Montrose

before

5648



after



2100 Montrose

before

5649



after



2100 Montrose

before

5650



after



before

1000 Drew

after

5651



before

1000 Drew

after

5652



2100 Montrose

before

5653



after



900 Willard

before

5654



after



before

900 Willard

after

5655



before

2022 Converse

after

5656



Dumpsters

1402 Westheimer

before

5657



after



2300 Grant

before

5658



after



Improvement District # 6

Graffiti Abatement

Before and After Pictures

March 12, 2012

Business Property

before

5659

516 Westheimer

after



before

5660

2512 Commonwealth

after



Public Property

before

1400 Indiana

after

5661



before

1400 Indiana

after

5662



before

2000 Waugh

after

5663



before

2001 Waugh

after

5664



before

2001 Waugh

after

5665



before

2001 Waugh

after

5666



before

2000 Waugh

after

5667



before

2000 1/2 Waugh

after

5668



before

5669



2400 Commonwealth

after



before

5670



1838 Fairview

after



2400 Dunlavy

before

5671



after



2400 Dunlavy

before

5672



after



2400 Dunlavy

before

5673



after



2324 Park

before

5674



after



before

2102 Morse

after

5675



before

2412 Elmen

after

5676



Dumpsters

1841 Fairview

before

5677



after



Improvement District # 6

Graffiti Abatement

Before and After Pictures

March 15, 2012

Business Property

1629 Westheimer

before

5678



after



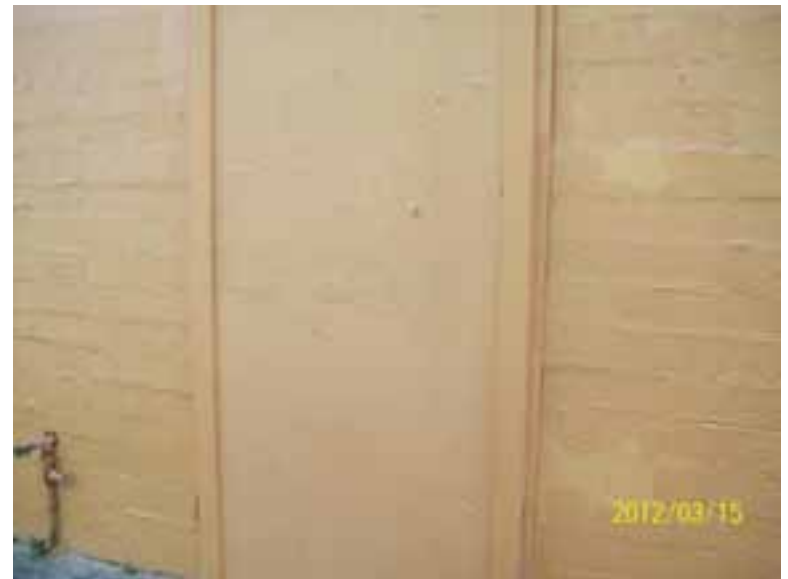
1629 Westheimer

before

5679



after



1629 Westheimer

before

5680



after



1629 Westheimer

before

5681



after



1637 Westheimer

before

5682



after



1637 Westheimer

before

5683



after



before

2900 Taft

after

5684



Public Property

before

5685

3601 Roseland

after



before

5686

900 Alabama

after



before

900 Alabama

after

5687



before

4220 Roseland

after

5688



before

5689

800 Richmond

after



before

5690

800 Richmond

after



901 Richmond

before

5691



after



900 Richmond

before

5692



after



1639 Westheimer

before

5693



after



before

5694



600 Alabama

after



before

600 Alabama

after

5695



before

3314 Taft

after

5696



before

3314 Taft

after

5697

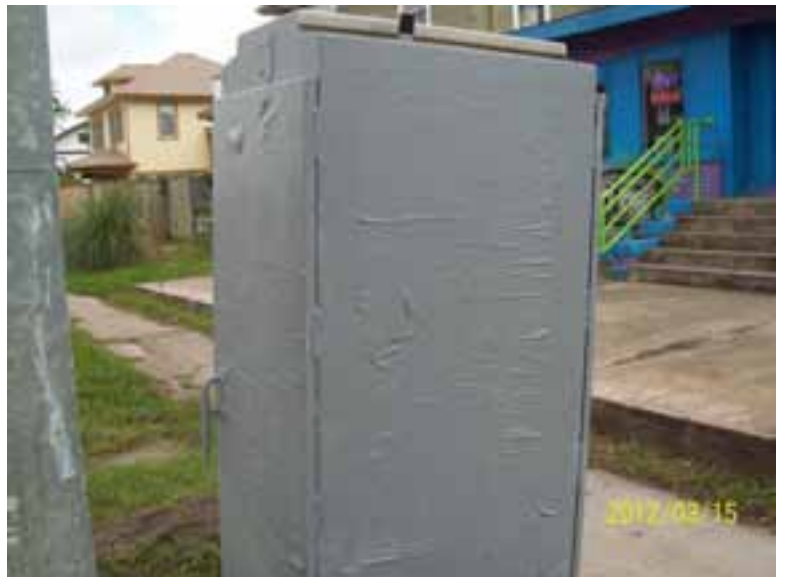


before

327 Westheimer

after

5698



1002 Fairview

before

5699



after



1002 Fairview

before

5700



after



Dumpsters

1629 Westheimer

before

5701



after



2401 Taft

before

5702



after



Improvement District # 6

Graffiti Abatement

Before and After Pictures

March 19, 2012

Business Property

206 Westheimer

before

5703



after



208 Westheimer

before

5704



after



before

5705

300 Westheimer

after



before

5706

300 Westheimer

after



Public Property

before

5707

300 Westheimer

after



before

5708

300 Westheimer

after



3300 Mt. Vernon

before

5709



after



1300 Westheimer

before

5710



after



before

2600 Waugh

after

5711



before

2006 Commonwealth

after

5712



before

5713

2100 Commonwealth

after



before

5714

2100 Commonwealth

after



before

5715

2205 Commonwealth

after



before

5716

2200 Commonwealth

after



before

5717

2200 Commonwealth

after



before

5718

2200 Commonwealth

after



before

5719

2207 Commonwealth

after



before

5720

2240 Commonwealth

after



1300 Westheimer

before

5721



after



1300 Westheimer

before

5722



after



1300 Westheimer

before

5723



after



1302 Westheimer

before

5724



after



1302 Westheimer

before

5725



after



Improvement District # 6

Graffiti Abatement

Before and After Pictures

March 24, 2012

Business Property

1400 Hawthorne

before

5726



after



3306 Mulberry

before

5727



after



3306 Mulberry

before

5728



after



Westheimer and Mandell

before

5729



after



Public Property

1300 W. Alabama

before

5730



after



3622 Yupon

before

5731



after



1334 Westheimer

before

5732



after



1401 Westheimer

before

5733



after



before

3300 Yupon

after

5734



before

3300 Mulberry

after

5735



1401 Hawthorne

before

5736



after



1401 Hawthorne

before

5737



after



1500 Hawthorne

before

5738



after



3401 Mulberry

before

5739



after



1600 Alabama

before

5740



after



Alabama and Mandell

before

5741



after



before

5742

Alabama and Mandell

after



before

5743

Alabama and Mandell

after



before

5744

Alabama and Mandell

after



before

5745

Alabama and Mandell

after



before

5746



Alabama and Mandell

after



before

5747



Alabama and Mandell

after



before

5748

Alabama and Mandell

after



before

5749

Alabama and Mandell

after



before

5750



Alabama and Mandell

after



before

5751



Alabama and Mandell

after



Westheimer and Mandell

before

5752



after



Westheimer and Mandell

before

5753



after



Westheimer and Mandell

before

5754



after



Westheimer and Mandell

before

5755



after



Westheimer and Mandell

before

5756



after



Westheimer and Mandell

before

5757



after



Improvement District # 6

Graffiti Abatement

Before and After Pictures

March 26, 2012

Public Property

before

5758

1643 Montrose

after



before

5759

1643 Montrose

after



1700 Westheimer

before

5760



after



1700 Westheimer

before

5761



after



1700 Westheimer

before

5762



after



1700 Westheimer

before

5763



after



1700 Westheimer

before

5764



after



1700 Westheimer

before

5765



after



1700 Westheimer

before

5766



after



1700 Westheimer

before

5767



after



1700 Westheimer

before

5768



after



1700 Westheimer

before

5769



after



1700 Westheimer

before

5770



after



1700 Westheimer

before

5771



after



1700 Westheimer

before

5772



after



1700 Westheimer

before

5773



after



1700 Westheimer

before

5774



after



2400 Woodhead

before

5775



after



2400 Woodhead

before

5776



after



2400 Woodhead

before

5777



after



2400 Woodhead

before

5778



after



2400 Woodhead

before

5779



after



2400 Woodhead

before

5780



after



2400 Woodhead

before

5781



after



1660 Westheimer

before

5782



after



1660 Westheimer

before

5783



after



1660 Westheimer

before

5784



after



1660 Westheimer

before

5785



after



1660 Westheimer

before

5786



after



1660 Westheimer

before

5787



after



1660 Westheimer

before

5788



after



1660 Westheimer

before

5789



after



1660 Westheimer

before

5790



after



1660 Westheimer

before

5791



after



1660 Westheimer

before

5792



after



1660 Westheimer

before

5793



after



1660 Westheimer

before

5794



after



1660 Westheimer

before

5795



after



1660 Westheimer

before

5796



after



2600 Dunlavy

before

5797



after



1660 Westheimer

before

5798



after



1660 Westheimer

before

5799



after



Improvement District # 6

Graffiti Abatement

Before and After Pictures

March 29, 2012

Business Property

before

5800

300 Westheimer

after



before

5801

300 Westheimer

after



1200 Missouri

before

5802



after



3200 Montrose

before

5803



after



before

5804

3200 Motnrose

after



before

5805

3200 Montrose

after



500 Westheimer

before

5806



after



500 Westheimer

before

5807



after



Public Property

1727 Westheimer

before

5808



after



1727 Westheimer

before

5809



after



1727 Westheimer

before

5810



after



Marshall and Mandell

before

5811



after



before

5812



Marshall and Mandell

after



before

5813



Marshall and Mandell

after



3700 Mandell

before

5814



after



3700 Mandell

before

5815



after



3600 Audubon

before

5816



after



3301 Whiney

before

5817



after



3301 Whitney

before

5818



after



3301 Whitney

before

5819



after



before

5820

400 Westheimer

after

