

# Harris County Improvement District # 6



Graffiti Abatement Reports

---

March 2011

# Harris County Improvement District #6

## Monthly Graffiti Abatement Reports 2011

Abated	Jan	Feb	Mar	Apr	May	June	July	Aug	Sept	Oct	Nov	Dec	2010 Total
Business Property	59	20	21										100
Public Property	54	85	52										191
Trash Dumpsters	10	1	5										16
<b>Total:</b>	<b>123</b>	<b>106</b>	<b>78</b>										<b>307</b>

Graffiti Abatement Reports Totals 2008 - 2011					
	2008	2009	2010	2011	Totals
<b>Abated</b>					
Business Property	184	98	144	100	526
Public Property	538	771	935	191	2435
Trash Dumpsters	28	40	48	16	132
<b>Total:</b>	<b>750</b>	<b>909</b>	<b>1,127</b>	<b>307</b>	<b>3093</b>

# Improvement District # 6

Graffiti Abatement

**Before and After Pictures**

**March 3, 2011**

# Business Property



## 2500 Montrose

before

3016



after



## 3200 Montrose

before

3017



after



# 3300 Whitney

before

3018



after



# Public Property



before  
3019

2400 Montrose

after



before  
3020

3200 Montrose

after



before  
3021

## 3300 Montrose

after



before  
3022

## 3700 Montrose

after





## 1010 Alabama

before

3023



after



## 1010 Alabama

before

3024



after



## 600 Hawthorne

before

3025



after



## 2700 Taft

before

3026



after





before

400 Lovett

after

3027



before

Taft and Lovett

after

3028





before

3300 Taft

after

3029



before

3300 Taft

after

3030





before

3300 Taft

after

3031



before

3300 Taft

after

3032





## 400 Hawthorne

before

3033



after



## 700 Clay

before

3034



after





before

700 Clay

after

3035



before

1100 Stanford

after

3036





before

3037

## 1900 W. Dallas

after



before

3038

## 1600 Stanford

after





## 607 Westheimer

before

3039



after



## 534 Westheimer

before

3040



after



# Dumpsters



before

3041

Taft and Westheimer

after



before

3042

Taft and Westheimer

after





# Improvement District # 6

Graffiti Abatement

**Before and After Pictures**

**March 10, 2011**

# Business Property

before

## 1711 Bomar

after

3043



before

## 307 West Gray

after

3044





## 3209 Montrose

before

3045



after



## 3209 Montrose

before

3046



after



# 3209 Montrose

before

3047



after



# Public Property



before

1711 Bomar

after

3048



before

1711 Bomar

after

3049





before

3050

## 1953 Montrose

after



before

3051

## Richmond Ave. and US 59

after





## Richmond Ave. and US 59

before

3052



after



## Richmond Ave. and US 59

before

3053



after



# Dumpsters



# 800 Oakley St.

before

3054



after



# Improvement District # 6

Graffiti Abatement

**Before and After Pictures**

**March 18, 2011**

# Business Property

before

3055

## 900 Westheimer

after



before

3056

## 900 Westheimer

after





# 701 Richmond

before

3057



after



# Public Property



before

## 100 Alabama

after

3058



before

## 221 Alabama

after

3059





before

## 220 Alabama

after

3060



before

## 3300 Roseland

after

3061



## 800 Westheimer

before

3062



after



## 800 Westheimer

before

3063



after





## 500 Richmond

before

3064



after



## 500 Richmond

before

3065



after





## 701 Richmond

before

3066



after



## 305 Avondale

before

3067



after





before

**309 Avondale**

after

3068



before

**4100 Milam**

after

3069





# Dumpsters

## 1302 Colquitt

before

3070



after



before

3071



## 2514 Taft

after



# Improvement District # 6

Graffiti Abatement

**Before and After Pictures**

**March 24, 2011**



# Business Property

## 3209 Montrose

before

3072



after



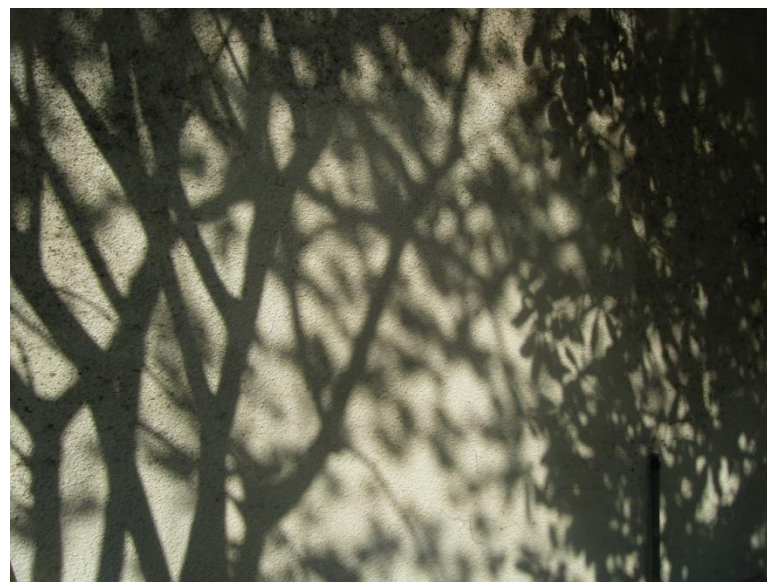
## 1726 Montrose

before

3073



after



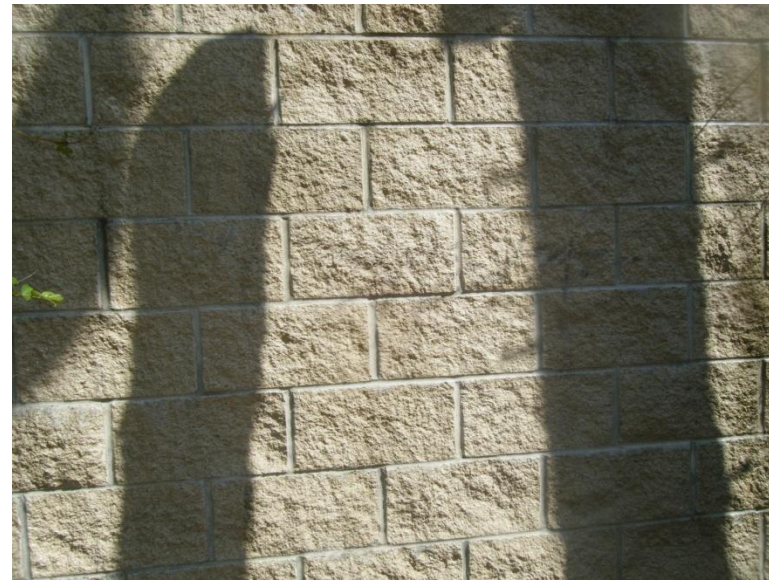


before

924 Grant

after

3074



before

924 Grant

after

3075





before

912 W. Gray

after

3076



before

912 W. Gray

after

3077





before

614 W. Gray

after

3078



before

803 W. Gray

after

3079





before

**924 Damon**

after

3080



before

**924 Damon**

after

3081



# Public Property



before

3082

1720 Montrose

after



before

3083

1013 W. Gray

after





## 1021 W. Gray

before

3084



after



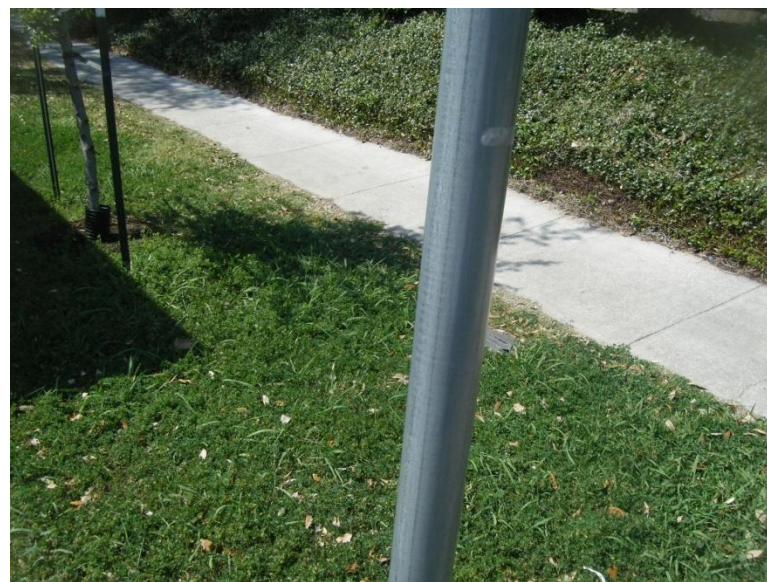
## 612 W. Gray

before

3085



after





before

3086

1500 Montrose

after



before

3087

1500 Montrose

after



before

3088

## 1014 Montrose

after



before

3089

## 1100 W. Gray

after





## 603 Westheimer

before

3090



after



## 3300 Stanford

before

3091



after





## 4107 Graustark

before

3092



after



## 1700 Montrose

before

3093



after

