

Montrose District



Graffiti Abatement Reports

February 2015

Montrose District

Monthly Graffiti Abatement Reports 2015

Abated	Jan	Feb	Mar	Apr	May	June	July	Aug	Sept	Oct	Nov	Dec	2015 Total
Business Property	60	51											111
Public Property	190	195											385
Trash Dumpsters	6	6											12
Total:	256	252											508

Graffiti Abatement Reports Totals 2008 - 2015									
	2008	2009	2010	2011	2012	2013	2014	2015	Totals
Abated									
Business Property	184	98	144	563	522	467	747	111	2,836
Public Property	538	771	935	1,802	1,724	1839	2356	385	10,350
Trash Dumpsters	28	40	48	59	114	84	82	12	467
Total:	750	909	1,127	2,424	2,360	2,390	3,185	508	13,653

Improvement District # 6

Graffiti Abatement

Before and After Pictures

February 2, 2015

Private Property

600 W Alabama

before

13402



after



600 W Alabama

before

13403



after



3700 Stanford

before

13404



after



1700 Richmond

before

13405



after



Public Property

before

13406

300 W Gray

after



before

13407

300 W Gray

after



before
13408

300 W Gray

after



before
13409

300 W Gray

after



before
13410

300 Fairview

after



before
13411

300 Fairview

after



before

13412

300 Fairview

after



before

13413

300 Fairview

after



3500 Stanford

before

13414



after



3700 Stanford

before

13415



after



600 W Alabama

before

13416



after



3400 Roseland

before

13417



after



before

13418

3400 Roseland

after



before

13419

3400 Roseland

after



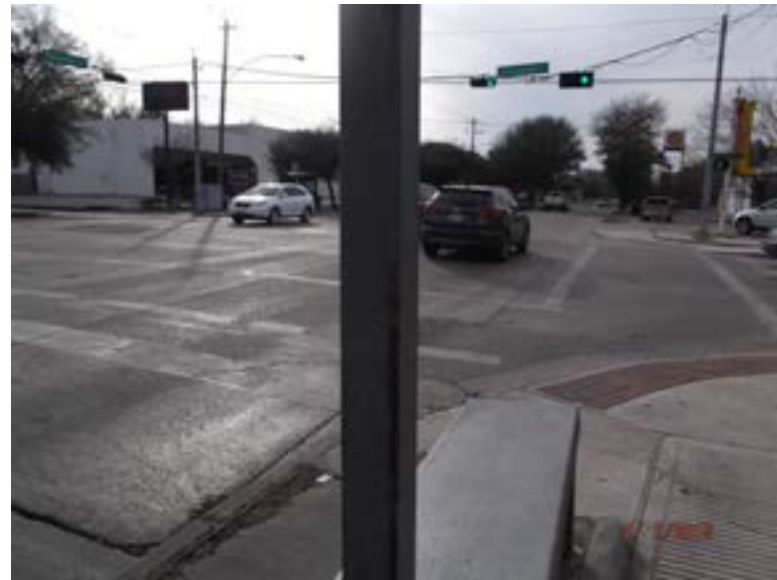
1700 Richmond

before

13420



after



1700 Richmond

before

13421



after



1800 Richmond

before

13422



after



1800 Richmond

before

13423



after



1800 Westheimer

before

13424



after



1800 Westheimer

before

13425



after



1800 Westheimer

before

13426



after



1800 Westheimer

before

13427



after



1800 Westheimer

before

13428



after



1800 Westheimer

before

13429



after



1800 Westheimer

before

13430



after



900 W Alabama

before

13431



after



Improvement District # 6

Graffiti Abatement

Before and After Pictures

February 5, 2015

Private Property

1629 Westheimer

before

13432



after



1407 Richmond

before

13433



after



1657 Westheimer

before

13434



after



1657 Westheimer

before

13435



after



1643 Westheimer

before

13436



after



1643 Westheimer

before

13437



after



1643 Westheimer

before

13438



after



1657 Westheimer

before

13439



after



Public Property

3500 Yoakum

before

13440



after



1100 Harold

before

13441



after



1319 Richmond

before

13442



after



1800 Richmond

before

13443



after



4300 Montrose

before

13444



after



4300 Montrose

before

13445



after



4200 Montrose

before

13446



after



4200 Montrose

before

13447



after



4200 Montrose

before

13448



after



1000 Richmond

before

13449



after



before

Montrose at Hawthorne

after

13450



before

Montrose at Hawthorne

after

13451



Montrose at Hawthorne

before

13452



after



Montrose at Hawthorne

before

13453



after



before
13454

Montrose at Hawthorne

after



before
13455

Montrose at Hawthorne

after



Montrose at Hawthorne

before

13456



after



3200 Montrose

before

13457



after



Dumpsters

1657 Westheimer

before

13458



after



Improvement District # 6

Graffiti Abatement

Before and After Pictures

February 9, 2015

Private Property

3200 Montrose

before

13459



after



1627 Westheimer

before

13460



after



1600 Westheimer

before

13461



after



1600 Westheimer

before

13462



after



1600 Westheimer

before

13463



after



Public Property

2400 Montrose

before

13464



after



2400 Montrose

before

13465



after



2400 Montrose

before

13466



after



2000 Montrose

before

13467



after



2000 Montrose

before

13468



after



1200 Montrose

before

13469



after



1200 Montrose

before

13470



after



1200 Montrose

before

13471



after



before

13472

1200 Montrose

after



before

13473

1200 Montrose

after



before

13474

1200 Montrose

after



before

13475

3300 Dunlavy

after



3300 Dunlavy

before

13476



after



3300 Dunlavy

before

13477



after



2500 Dunlavy

before

13478



after



1500 Richmond

before

13479



after



1500 Richmond

before

13480



after



1500 Richmond

before

13481



after



1400 Richmond

before

13482



after



1400 Richmond

before

13483



after



1400 Richmond

before

13484



after



1200 Richmond

before

13485



after

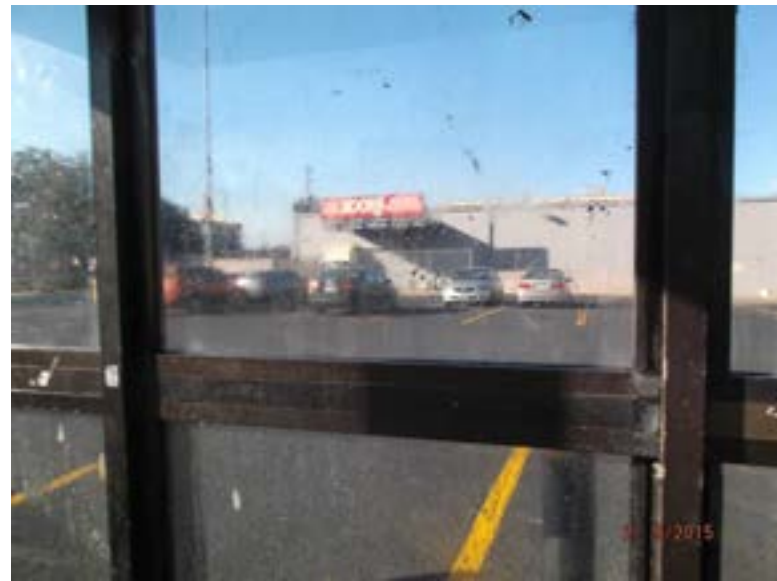


before

13486

1000 Lovett

after



before

13487

1000 Lovett

after

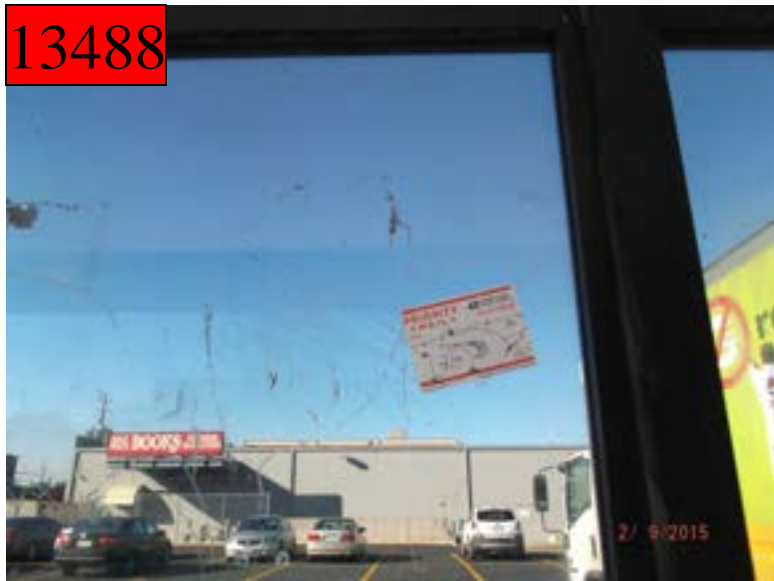


before

13488

1000 Lovett

after



before

13489

1000 Lovett

after



before
13490

1000 Lovett

after



before
13491

1100 Hawthorne

after



before

13492

2500 Waugh

after



Improvement District # 6

Graffiti Abatement

Before and After Pictures

February 12, 2015

Private Property

1637 Westheimer

before

13493



after



4011 Hazard

before

13494



after



before

13495

3000 Taft

after



before

13496

3000 Taft

after



before

13497

3000 Taft

after

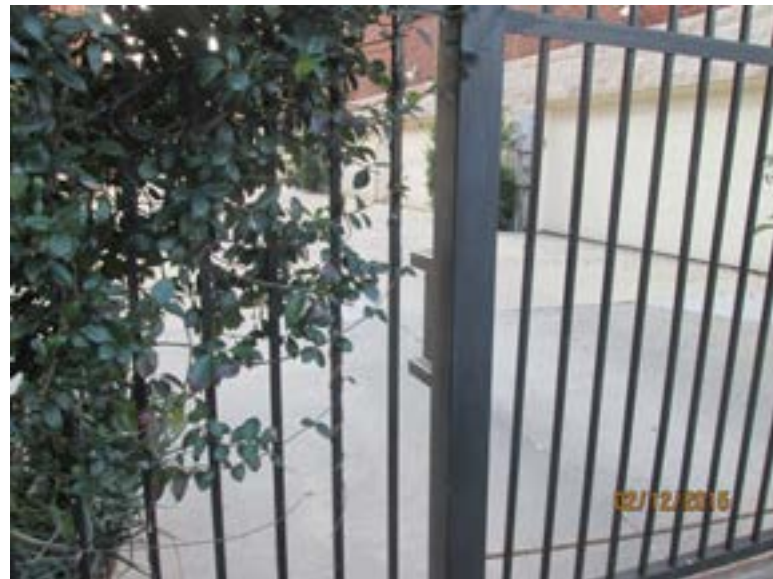


before

13498

3000 Taft

after



Public Property

3300 Mandell

before

13499



after



1500 Westheimer

before

13500



after



1660 Westheimer

before

13501



after



2600 Dunlavy

before

13502



after



2500 Dunlavy

before

13503



after



1600 Alabama

before

13504



after



3600 S Shepherd

before

13505



after



2000 Richmond

before

13506



after



1900 Richmond

before

13507



after



1700 Richmond

before

13508



after



700 Richmond

before

13509



after



1600 Westheimer

before

13510



after



before

13511

3500 Mt Vernon

after



before

13512

1200 W Alabama

after



before

13513

600 Harold

after



before

13514

500 Hawthorne

after



3400 Audubon

before

13515



after



before

13516



3300 Taft

after



600 Hawthorne

before

13517



after



3300 Taft

before

13518



after



before

13519

3300 Taft



after



before

13520

3000 Taft



after



Dumpsters

before

13521

4011 Hazard

after



Improvement District # 6

Graffiti Abatement

Before and After Pictures

February 16, 2015

Private Property

1432 Hawthorne

before

13522



after



4500 Graustark

before

13523



after



3116 S Shepherd

before

13524



after



3116 S Shepherd

before

13525



after



3116 S Shepherd

before

13526



after



3116 S Shepherd

before

13527



after



before
13528

3116 S Shepherd

after



before
13529

3116 S Shepherd

after



3116 S Shepherd

before

13530



after



Public Property

before
13531

1900 Dallas

after



before
13532

1900 Dallas

after



before

13533

1900 Dallas

after



before

13534

1900 Dallas

after



before

13535

1900 Dallas

after



before

13536

2000 Dallas

after



before

13537

2000 Dallas

after



before

13538

1100 Westheimer

after



before
13539

1100 Westheimer

after



before
13540

1100 Westheimer

after



1100 Westheimer

before

13541



after



4500 Graustark

before

13542



after



5000 Yoakum

before

13543



after



5000 Yoakum

before

13544



after



2500 Van Buren

before

13545



after



3100 S Shepherd

before

13546



after



3100 S Shepherd

before

13547



after



3100 S Shepherd

before

13548



after



before
13549

3000 Taft

after



before
13550

3000 Taft

after



Dumpsters

1400 Westheimer

before

13551



after



Improvement District # 6

Graffiti Abatement

Before and After Pictures

February 19, 2015

Private Property

3210 W Dallas

before

13552



after



3210 W Dallas

before

13553



after



1637 Westheimer

before

13554



after



1203 Lovett

before

13555



after



before

13556

1203 Lovett

after



before

13557

1203 Lovett

after



Public Property

before

401 Westheimer

after

13558



before

401 Westheimer

after

13559



301 Westheimer

before

13560



after



400 Lovett

before

13561



after



before

13562

900 Alabama

after



before

13563

4600 Graustark

after



before
13564

1900 W Gray

after



before
13565

1400 W Gray

after



3300 W Dallas

before

13566



after



3500 W Dallas

before

13567



after



3500 W Dallas

before

13568



after



1900 W Clay

before

13569



after



before

13570

1900 Welch

after



before

13571

1300 Missouri

after



before

13572

300 Mandell

after



before

13573

1600 Mandell

after



1600 Richmond

before

13574



after



1600 Richmond

before

13575



after



1400 Hawthorne

before

13576



after



3300 Hawthorne

before

13577



after



3300 Graustark

before

13578



after



1100 Hawthorne

before

13579



after



3200 Mt Vernon

before

13580



after



300 Stratford

before

13581



after



Dumpsters

before
13582

3332 Graustark

after



Improvement District # 6

Graffiti Abatement

Before and After Pictures

February 23, 2015

Private Property

1111 Westheimer

before

13583



after



1111 Westheimer

before

13584



after



before

13585

3314 Taft

after



before

13586

612 Branard

after



Public Property

1220 Westheimer

before

13587



after



3400 Mulberry

before

13588



after



Mulberry at Hawthorne

before

13589



after



1500 Westheimer

before

13590



after



1500 Westheimer

before

13591



after



1500 Westheimer

before

13592



after



1500 Westheimer

before

13593



after



3400 Dunlavy

before

13594



after



1700 Dunlavy

before

13595



after



1700 Peden

before

13596



after



before

13597

1700 Peden

after



before

13598

1500 Park

after



2500 Yoakum

before

13599



after



2500 Yoakum

before

13600



after



before

13601

2600 Grant

after



before

13602

800 Pacific

after



before

13603

3300 Taft

after



before

13604

3300 Taft

after



600 Hawthorne

before

13605



after



600 Hawthorne

before

13606



after



before

13607

4200 Loretto

after



before

13608

4100 Loretto

after



before

13609

1500 N Main

after



before

13610

1400 Harold

after



before

13611

2400 Taft

after



Improvement District # 6

Graffiti Abatement

Before and After Pictures

February 26, 2015

Private Property

910 Westhiemer

before

13612



after



2517 Mandell

before

13613



after



2517 Mandell

before

13614



after



2517 Mandell

before

13615



after



before

1500 Haddon

after

13616



before

1500 Haddon

after

13617



before

13618

1200 Kenwood

after



before

13619

3300 Montrose

after



3300 Montrose

before

13620



after



Public Property

900 Westheimer

before

13621



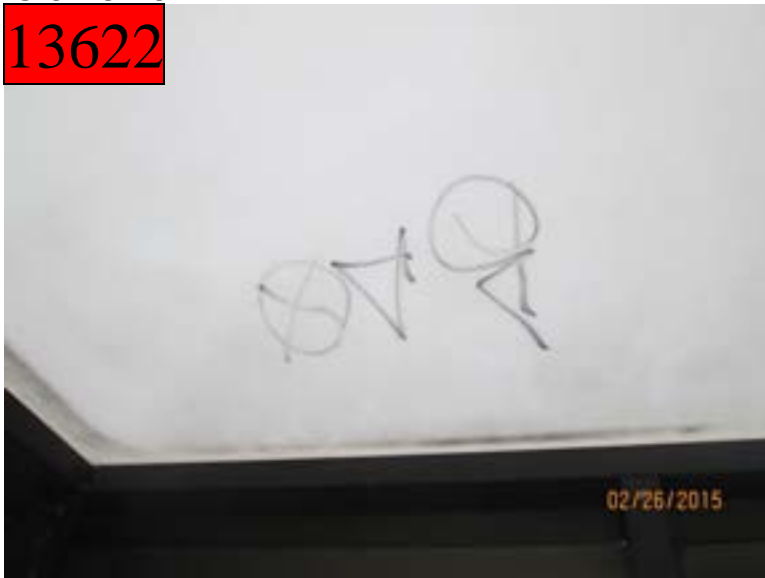
after



900 Westheimer

before

13622



after



before

13623

900 Westheimer

after



before

13624

900 Westheimer

after



1200 Westheimer

before

13625



after



2400 Mandell

before

13626



after



1800 Fairview

before

13627



after



1800 Fairview

before

13628



after



2300 Dunlavy

before

13629



after



2400 Mandell

before

13630



after



1600 Vermont

before

13631



after



1800 Vermont

before

13632



after



before

13633



1500 Haddon

after



before

13634



1400 Indiana

after



before

13635

2000 Waugh

after



before

13636

2000 Waugh

after



before

13637

1400 Indiana

after



before

13638

1400 Indiana

after



before

13639

2000 Waugh

after



before

13640

2000 Waugh

after



before

13641

2000 Commonwealth

after



before

13642

2000 Commonwealth

after



before

13643

2100 Commonwealth

after



before

13644

1500 Indiana

after



before

13645

2100 Commonwealth

after



before

13646

1500 Maryland

after



4800 Montrose

before

13647



after



1400 Richmond

before

13648



after



1400 Richmond

before

13649



after



3300 Montrose

before

13650



after



before

13651

3000 Taft

after



Dumpsters

before

13652

2700 Lincoln

after



before

13653

2700 Waughcrest

after



No
After
Image
Available