

Montrose District



Graffiti Abatement Reports

January 2015

Montrose District

Monthly Graffiti Abatement Reports 2015

Abated	Jan	Feb	Mar	Apr	May	June	July	Aug	Sept	Oct	Nov	Dec	2015 Total
Business Property	60												60
Public Property	190												190
Trash Dumpsters	6												6
Total:	256												256

Graffiti Abatement Reports Totals 2008 - 2015									
	2008	2009	2010	2011	2012	2013	2014	2015	Totals
Abated									
Business Property	184	98	144	563	522	467	747	60	2,785
Public Property	538	771	935	1,802	1,724	1839	2356	190	10,155
Trash Dumpsters	28	40	48	59	114	84	82	6	461
Total:	750	909	1,127	2,424	2,360	2,390	3,185	256	13,401

Improvement District # 6

Graffiti Abatement

Before and After Pictures

January 5, 2015

Private Property

1800 Richmond

before

13146



after



1800 Richmond

before

13147



after



1800 Richmond

before

13148



after



1800 Richmond

before

13149



after



1800 Richmond

before

13150



after



1800 Richmond

before

13151



after



1800 Richmond

before

13152



after



1800 Richmond

before

13153



after



1800 Richmond

before

13154



after



1800 Richmond

before

13155



after



1800 Richmond

before

13156



after



4500 Mt Vernon

before

13157



after



4500 Mt Vernon

before

13158



after



4500 Mt Vernon

before

13159



after



4500 Mt Vernon

before

13160



after



4500 Mt Vernon

before

13161



after



Public Property

before

13162

400 Westheimer

after



before

13163

400 Westheimer

after



before

13164

3000 Taft

after



before

13165

3300 Taft

after



before

13166

3300 Taft

after



before

13167

3300 Taft

after



700 Hawthorne

before

13168



after



3700 Mandell

before

13169



after



3700 Dunlavy

before

13170



after



3700 Dunlavy

before

13171



after



3700 Dunlavy

before

13172



after



2000 Richmond

before

13173



after



2000 Richmond

before

13174



after



1800 Richmond

before

13175



after



1800 Richmond

before

13176



after



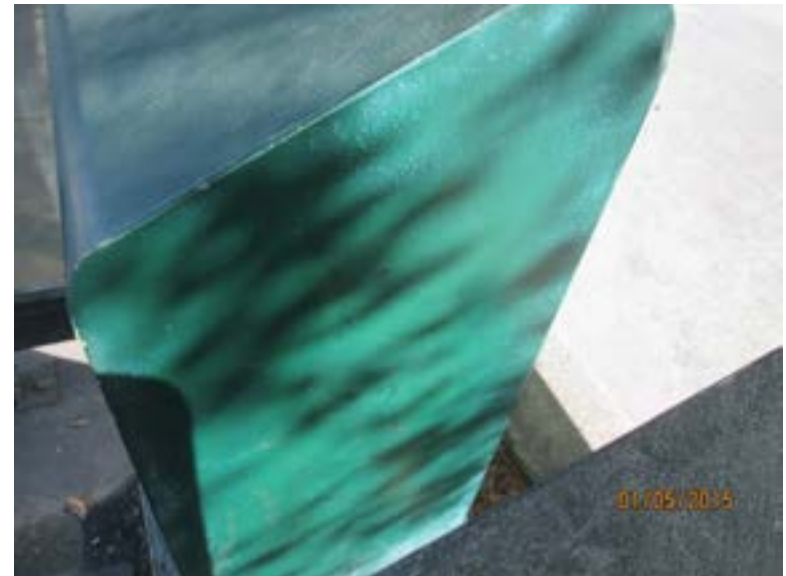
1800 Richmond

before

13177



after



1800 Richmond

before

13178



after



1800 Richmond

before

13179



after



4300 Woodhead

before

13180



after



4500 Graustark

before

13181



after



4500 Graustark

before

13182



after



4500 Graustark

before

13183



after



2100 Dunlavy

before

13184



after



2100 Dunlavy

before

13185



after



Dumpsters

600 W Alabama

before

13186



after



Improvement District # 6

Graffiti Abatement

Before and After Pictures

January 8, 2015

Public Property

before

13187



1100 W Gray

after



before

13188



3500 Roseland

after



before
13189

4100 Garrett

after



before
13190

2700 S Shepherd

after



1300 Westheimer

before

13191



after



1300 Westheimer

before

13192



after



200 Westheimer

before

13193



after



300 W Alabama

before

13194



after



1800 W Alabama

before

13195



after



4500 Hazard

before

13196



after



4600 Woodhead

before

13197



after



4600 Woodhead

before

13198



after



4500 Woodhead

before

13199



after



2300 Taft

before

13200



after



1500 Stanford

before

13201



after



1500 Stanford

before

13202



after



1500 Stanford

before

13203



after



2200 Taft

before

13204



after



before

13205

700 Avondale

after



before

13206

700 Avondale

after



2700 Stanford

before

13207



after



3700 Stanford

before

13208



after



1000 Richmond

before

13209



after



1000 Richmond

before

13210



after



4300 Montrose

before

13211



after



4300 Montrose

before

13212



after



1300 Hawthorne

before

13213



after



1300 Richmond

before

13214



after



1400 Castle Ct

before

13215



after



1400 Castle Ct

before

13216



after



before

13217

4400 Yupon

after



before

13218

4400 Yupon

after



before

13219

4400 Yupon

after



Improvement District # 6

Graffiti Abatement

Before and After Pictures

January 12, 2015

Private Property

3300 Mandell

before

13220



after



3300 Mandell

before

13221



after



3300 Mandell

before

13222



after



3300 Mandell

before

13223



after



1600 Westheimer

before

13224



after



1600 Westheimer

before

13225



after



1500 W Alabama

before

13226



after



1500 W Alabama

before

13227



after



1500 W Alabama

before

13228



after



1500 W Alabama

before

13229



after



2000 Dunlavy

before

13230



after



Public Property

1400 Woodhead

before

13231



after



1400 Woodhead

before

13232



after



3300 Mandell

before

13233



after



3300 Mandell

before

13234



after



3300 Mandell

before

13235



after



3300 Mandell

before

13236



after



3300 Mandell

before

13237



after



100 Westheimer

before

13238



after



100 Westheimer

before

13239



after



100 Westheimer

before

13240



after



100 Westheimer

before

13241



after



100 Westheimer

before

13242



after



before
13243

200 Westheimer

after



before
13244

200 Westheimer

after



200 Westheimer

before

13245



after



200 Westheimer

before

13246



after



2000 W Alabama

before

13247



after



2000 W Alabama

before

13248



after



1500 W Alabama

before

13249



after



2400 Waugh

before

13250



after



before

13251

2400 Waugh

after



before

13252

2400 Waugh

after



before
13253

2400 Waugh

after



before
13254

1800 Harold

after



before

13255



1800 Harold

after



before

13256



1800 Harold

after



2100 Dunlavy

before

13257



after



2100 Dunlavy

before

13258



after



1600 Missouri

before

13259



after



1600 Missouri

before

13260



after



Improvement District # 6

Graffiti Abatement

Before and After Pictures

January 15, 2015

Private Property

before

13261

1225 Waugh

after



before

13262

1934 W Dallas

after



before

13263

3615 Montrose

after



before

13264

3615 Montrose

after



3611 Montrose

before

13265



after



1000 Banks

before

13266



after



Public Property

1700 California

before

13267



after



2700 Windsor

before

13268



after



2700 Windsor

before

13269



after



1000 Waugh

before

13270



after



before

13271

1000 Waugh

after



before

13272

1000 Waugh

after



2400 W Dallas

before

13273



after



1000 Taft

before

13274



after



3600 Montrose

before

13275



after



3600 Montrose

before

13276



after



before

3600 Montrose

after

13277



before

Richmond at Mandell

after

13278



4500 Graustark

before

13279



after



Dumpsters

2700 Waughcrest

before

13280



after



Improvement District # 6

Graffiti Abatement

Before and After Pictures

January 19, 2015

Private Property

2000 Montrose

before

13281



after



1100 Willard

before

13282



after



1600 Westheimer

before

13283



after



1600 Westheimer

before

13284



after



1600 Westheimer

before

13285



after



1600 Westheimer

before

13286



after



4000 Dunlavy

before

13287



after



4000 Dunlavy

before

13288



after



1300 Westheimer

before

13289



after



Public Property

before

13290

600 W Gray

after



before

13291

600 W Gray

after



1600 Stanford

before

13292



after



1600 Stanford

before

13293



after



2000 Montrose

before

13294



after



3700 Roseland

before

13295



after



before

900 Marshall

after

13296



before

1600 Westheimer

after

13297



1600 Westheimer

before

13298



after



1600 Westheimer

before

13299



after



before
13300

2500 Ralph

after



before
13301

1500 W Alabama

after



before

13302

1300 Castle

after



before

13303

2600 Woodhead

after



before

13304

2600 Woodhead

after



before

13305

1200 Lovett

after



2100 Dunlavy

before

13306



after



2100 Dunlavy

before

13307



after



2000 Dunlavy

before

13308



after



2000 Dunlavy

before

13309



after



2000 Dunlavy

before

13310



after



2000 Dunlavy

before

13311



after



2000 Dunlavy

before

13312



after



2000 Indiana

before

13313



after



before

13314

2400 Huldý

after



before

13315

2400 Huldý

after



before

13316



2400 Huldý

after



before

13317



2400 Huldý

after



Improvement District # 6

Graffiti Abatement

Before and After Pictures

January 23, 2015

Private Property

before

13318

240 Westheimer

after



before

13319

240 Westheimer

after



810 Richmond

before

13320



after



806 Richmond

before

13321



after



806 Richmond

before

13322



after



Public Property

1500 Westheimer

before
13323



after



1700 Ridgewood

before
13324



after



1700 California

before

13325



after



500 Pacific

before

13326



after



before

13327

600 Avondale

after



before

13328

500 Westheimer

after



before

13329



2800 Helena

after



before

13330



100 Avondale

after



before

13331

3000 Bagby

after



before

13332

100 Avondale

after



200 Westheimer

before

13333



after



3300 Taft

before

13334



after



3400 Burlington

before

13335



after



1800 Commonwealth

before

13336



after



2700 Waughcrest

before

13337



after



2500 Waugh

before

13338



after



900 Richmond

before

13339



after



700 Hawthorne

before

13340



after



Dumpsters

240 Westheimer

before

13341



after



Improvement District # 6

Graffiti Abatement

Before and After Pictures

January 26, 2015

Private Property

2200 Montrose

before

13342



after



2200 Montrose

before

13343



after



2200 Montrose

before

13344



after



1800 Harold

before

13345



after



1200 Kenwood

before

13346



after



Public Property

2000 Montrose

before

13347



after



2000 Montrose

before

13348



after



2000 Montrose

before

13349



after



2000 Montrose

before

13350



after



before

13351

2300 Taft

after



before

13352

1600 W Alabama

after



1600 W Alabama

before

13353



after



1600 Westheimer

before

13354



after



1600 Westheimer

before

13355



after



1600 Westheimer

before

13356



after



1800 Dunlavy

before

13357



after



1600 Haddon

before

13358



after



1700 Dunlavy

before

13359



after



2700 Dunlavy

before

13360



after



2700 Dunlavy

before

13361



after



2700 Dunlavy

before

13362



after



before

13363



1700 Harold

after



before

13364



1700 Harold

after



before

13365

1800 Harold

after



before

13366

1800 Harold

after



before

13367



1800 Harold

after



before

13368



3700 Hazard

after



4100 Mandell

before

13369



after



4500 Graustark

before

13370



after



Dumpsters

before

13371



3600 Hazard

after



before

13372



3600 Hazard

after



1600 Westheimer

before

13373



after



Improvement District # 6

Graffiti Abatement

Before and After Pictures

January 30, 2015

Private Property

1810 Richmond

before

13374



after



1810 Richmond

before

13375



after



1810 Richmond

before

13376



after



1810 Richmond

before

13377



after



1810 Richmond

before

13378



after



1810 Richmond

before

13379



after



before

13380

1700 Taft

after



before

13381

1300 Castle Court

after



Public Property

2600 Woodhead

before

13382



after



1800 Woodhead

before

13383



after



1800 Woodhead

before

13384



after



1800 Woodhead

before

13385



after



300 W Alabama

before
13386



after



300 W Alabama

before
13387



after



before

13388

2200 Taft

after



before

13389

2000 Yupon

after



before

13390

2600 Yupon

after



before

13391

2700 Yupon

after



3600 Mandell

before

13392



after



1200 Kipling

before

13393



after



before
13394

1400 Castle Court

after



before
13395

3800 Roseland

after



600 Westheimer

before

13396



after



2000 Fairview

before

13397



after



before

13398

1500 Haddon

after



before

13399

1500 Haddon

after



before

13400

1300 Peden

after



before

13401

1300 Peden

after

