

Graffiti Abatement Reports

January 2012

Montrose District

Monthly Graffiti Abatement Reports 2012

Abated	Jan	Feb	Mar	Apr	May	June	July	Aug	Sept	Oct	Nov	Dec	2012 Total
Business Property	74												74
Public Property	105												105
Trash Dumpsters	7												7
Total:	186												186

Graffiti Abatement Reports Totals 2008 - 2012						
	2008	2009	2010	2011	2012	Totals
Abated						
Business Property	184	98	144	563	74	1,063
Public Property	538	771	935	1802	105	4,169
Trash Dumpsters	28	40	48	59	7	182
Total:	750	909	1,127	2,424	186	5,396

Improvement District # 6

Graffiti Abatement

Before and After Pictures

January 5, 2012

Business Property

1431 Westheimer

before

5211



after



1431 Westheimer

before

5212



after



1431 Westheimer

before

5213



after



1431 Westheimer

before

5214



after



1431 Westheimer

before

5215



after



1911 W. Alabama

before

5216



after



Public Property

before

4000 Driscoll

after

5217



before

4502 Dunlavy

after

5218



4502 Dunlavy

before

5219



after



4502 Dunlavy

before

5220



after



2001 Branard

before

5221



after



1700 Branard

before

5222



after



1700 Branard

before

5223



after



1920 Branard

before

5224



after



before

5225

3818 McDuffie

after



before

5226

3811 McDuffie

after



Dumpsters

1431 Westheimer

before

5227



after



1431 Westheimer

before

5228



after



Improvement District # 6

Graffiti Abatement

Before and After Pictures

January 6, 2012

Business Property

2000 W. Main

before

5229



after



2000 W. Main

before

5230



after



3300 Shepherd

before

5231



after



1805 W. Main

before

5232



after



Public Property

before

5233

3800 McDuffie

after



before

5234

4200 Hazard

after



4105 McDuffie

before

5235



after



1900 Sul Ross

before

5236



after



1900 Sul Ross

before

5237



after



1900 Sul Ross

before

5238



after



4100 McDuffie

before

5239



after



4100 Woodhead

before

5240



after



4100 Woodhead

before

5241



after



4100 Woodhead

before

5242



after



4100 Woodhead

before

5243



after



2000 W. Main

before

5244



after



before

XXX

after

5245



before

XXX

after

5246



Shepherd and W. Alabama

before

5247



after



Shepherd and W. Alabama

before

5248



after



before

2200 Taft

after

5249



before

1000 Peden

after

5250



3300 Shepherd

before

5251



after



Dumpsters

before

1000 Willard

after

5252



Improvement District # 6

Graffiti Abatement

Before and After Pictures

January 10, 2012

Business Property

before

1722 Taft

after

5253



before

1722 Taft

after

5254



before

1722 Taft

after

5255



before

1727 Taft

after

5256



before

1727 Taft

after

5257

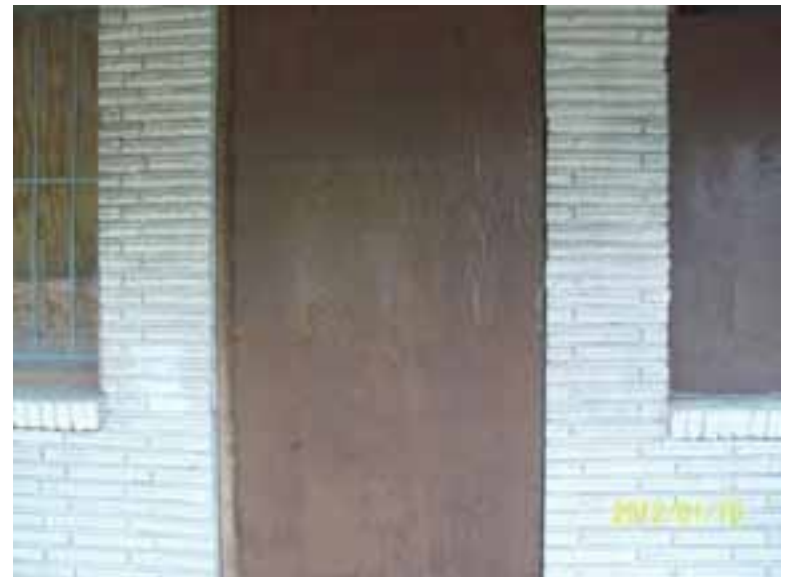


before

1727 Taft

after

5258



before

1727 Taft

after

5259



before

1830 Alabama

after

5260



1830 Alabama

before

5261



after



1830 Alabama

before

5262



after



1830 Alabama

before

5263



after



1627 Westheimer

before

5264



after



before

5265



1611 Westheimer

after



before

5266



1611 Westheimer

after



Public Property

before

1701 Montrose

after

5267



before

1701 Montrose

after

5268



Dumpsters

2003 Alabama

before

5269



after



Improvement District # 6

Graffiti Abatement

Before and After Pictures

January 13, 2012

Business Property

1629 Westheimer

before

5270



after



1629 Westheimer

before

5271



after



1629 Westheimer

before

5272



after



1629 Westheimer

before

5273



after



1629 Westheimer

before

5274



after



1629 Westheimer

before

5275



after



1629 Westheimer

before

5276



after



1629 Westheimer

before

5277



after



1637 Westheimer

before

5278



after



1637 Westheimer

before

5279



after



1637 Westheimer

before

5280



after



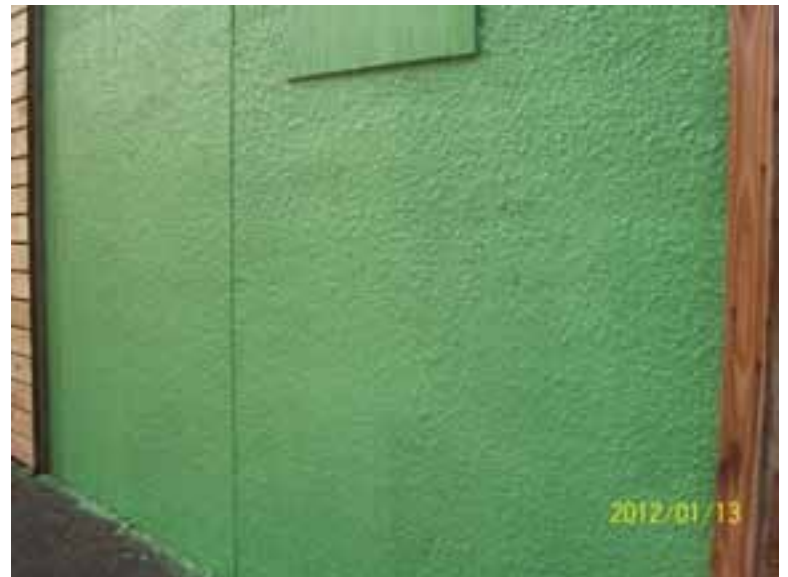
1637 Westheimer

before

5281



after



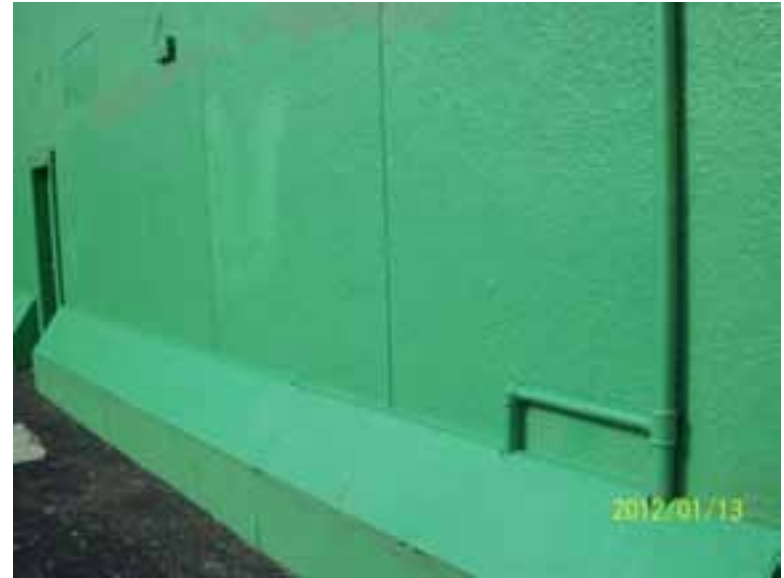
1637 Westheimer

before

5282



after



1637 Westheimer

before

5283



after



1637 Westheimer

before

5284



after



3311 S. Shepherd

before

5285



after



before

5286

3425 S. Shepherd

after



Public Property

before

5287

1657 Montrose

after



before

5288

1643 Montrose

after



before

5289

1637 Montrose

after



before

5290

1660 Montrose

after



Improvement District # 6

Graffiti Abatement

Before and After Pictures

January 14, 2012

Business Property

before

614 W. Gray

after

5291



before

4200 Stanford

after

5292



Public Property

1700 Missouri

before

5293



after



1700 Missouri

before

5294



after



before

1500 Taft

after

5295



before

2600 Yoakum

after

5296



2600 Yoakum

before

5297



after



4200 Hazard

before

5298



after



before

4200 Hazard

after

5299



before

3200 Shepherd

after

5300



before

1800 Norfolk

after

5301



before

1600 Branard

after

5302



4200 Graustark

before

5303



after



4200 Graustark

before

5304



after



before

1900 Welch

after

5305



before

1900 Welch

after

5306



2400 Woodhead

before

5307



after



2400 Woodhead

before

5308



after



3700 Mandell

before

5309



after



3700 Mandell

before

5310



after



before

1000 Taft

after

5311



before

600 W. Polk

after

5312



Dumpsters

before

614 W. Gray

after

5313



before

1900 Peden

after

5314



Improvement District # 6

Graffiti Abatement

Before and After Pictures

January 16, 2012

Business Property

4502 Dunlavy

before

5315



after



4502 Dunlavy

before

5316



after



Public Property

1729 Lexington

before

5317



after



1729 Lexington

before

5318



after



1701 Lexington

before

5319



after



3712 Hazard

before

5320



after



before

3712 Hazard

after

5321



before

3712 Hazard

after

5322



before

2401 hazard

after

5323



before

1900 Fairview

after

5324



before

1940 Welch

after

5325



before

1940 Welch

after

5326



before

1940 Welch

after

5327



before

1500 Welch

after

5328



2000 Common Wealth

before

5329



after



before

5330



1501 Welch

after



before

5331

2200 Van Buren

after



Improvement District # 6

Graffiti Abatement

Before and After Pictures

January 19, 2012

Business Property

4502 Woodhead

before

5332



after



Public Property

before

3314 Taft

after

5333



before

3316 Taft

after

5334



before

3316 Taft

after

5335



before

3314 Taft

after

5336



before

300 Alabama

after

5337



before

3700 Flora

after

5338



before

4200 Garrot

after

5339



before

900 Woodrow

after

5340



before

930 Kippling

after

5341



before

3600 Montrose

after

5342



4000 Stanford

before

5343



after



701 W. Main

before

5344



after



4001 Stanford

before

5345



after



3218 Montrose

before

5346



after



before

5347

507 Westheimer

after



before

5348

3301 Whitney

after



before

401 Lovett

after

5349



before

600 Hawthorne

after

5350



2200 Morgan

before

5351



after



Dumpsters

before

3800 Day

after

5352



Improvement District # 6

Graffiti Abatement

Before and After Pictures

January 23, 2012

Business Property

1733 Westheimer

before

5353



after



1733 Westheimer

before

5354



after



1733 Westheimer

before

5355



after



1733 Westheimer

before

5356



after



1733 Westheimer

before

5357



after



1700 Missouri

before

5358



after



Public Property

before

200 Welch

after

5359



before

1812 Sul Ross

after

5360



1900 Sul Ross

before

5361



after



2100 Croker

before

5362



after



1700 Stanford

before

5363



after



1800 Taft

before

5364



after



before

1000 Bomar

after

5365



before

2300 Montrose

after

5366



2100 Converse

before

5367



after



Improvement District # 6

Graffiti Abatement

Before and After Pictures

January 27, 2012

Business Property

2700 Ridgewood

before

5368



after



1536 California

before

5369



after



1536 California

before

5370



after



1536 California

before

5371



after



1536 California

before

5372



after



3321 Stanford

before

5373



after



before

1722 Taft

after

5374



Public Property

1536 California

before

5375



after



2106 Crocker

before

5376



after



Improvement District # 6

Graffiti Abatement

Before and After Pictures

January 30, 2012

Business Property

1629 Westheimer

before

5377



after



1639 Westheimer

before

5378



after



1637 Westheimer

before

5379



after



1637 Westheimer

before

5380



after



1637 Westheimer

before

5381



after



1637 Westheimer

before

5382



after



1637 Westheimer

before

5383



after



1637 Westheimer

before

5384



after



1637 Westheimer

before

5385



after



1637 Westheimer

before

5386



after



1637 Westheimer

before

5387



after



300 W. Gray

before

5388



after



before

XXX

after

5389



before

XXX

after

5390



1639 Westheimer

before

5391



after



Public Property

before

2000 Mason

after

5392



before

200 Welch

after

5393



1800 Webster

before

5394



after



1601 Taft

before

5395



after



before

201 W. Gray

after

5396

