

# Harris County Improvement District # 6



Graffiti Abatement Reports

---

January 2011

# Harris County Improvement District #6

## Monthly Graffiti Abatement Reports 2011

Abated	Jan	Feb	Mar	Apr	May	June	July	Aug	Sept	Oct	Nov	Dec	2010 Total
Business Property	59												59
Public Property	54												54
Trash Dumpsters	10												10
<b>Total:</b>	<b>123</b>												<b>123</b>

Graffiti Abatement Reports Totals 2008 - 2011					
	2008	2009	2010	2011	Totals
<b>Abated</b>					
Business Property	184	98	144	59	485
Public Property	538	771	935	54	2,298
Trash Dumpsters	28	40	48	10	126
<b>Total:</b>	<b>750</b>	<b>909</b>	<b>1,127</b>	<b>123</b>	<b>2,909</b>

# Improvement District # 6

Graffiti Abatement

**Before and After Pictures**

**January 7, 2011**

# Business Property



before

2787

## 1002 Montrose

after

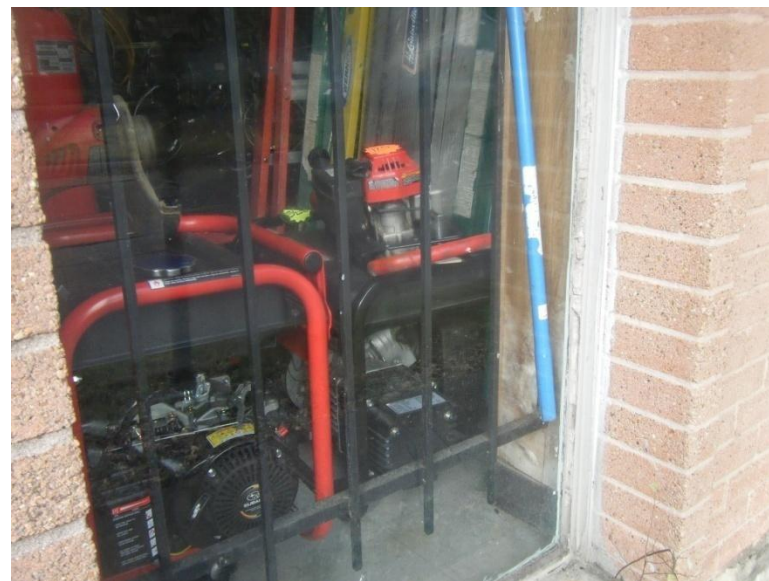
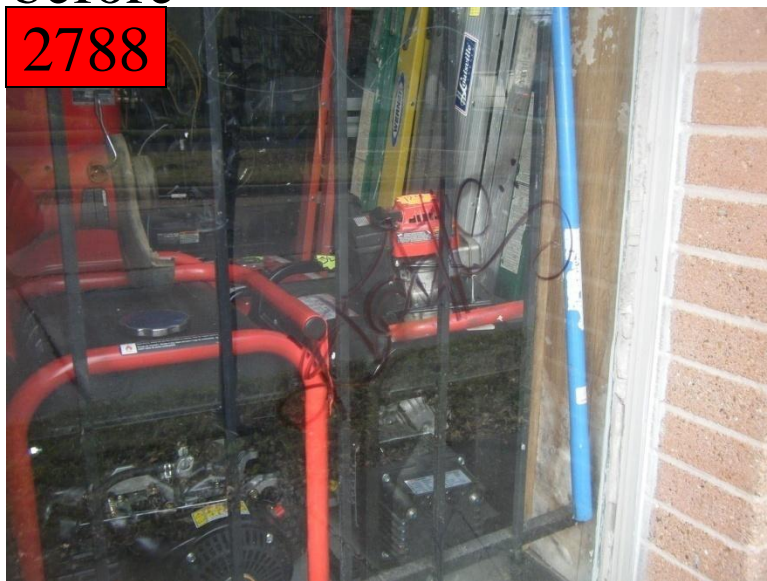


before

2788

## 1700 Montrose

after



before

2789

## 1700 Montrose

after

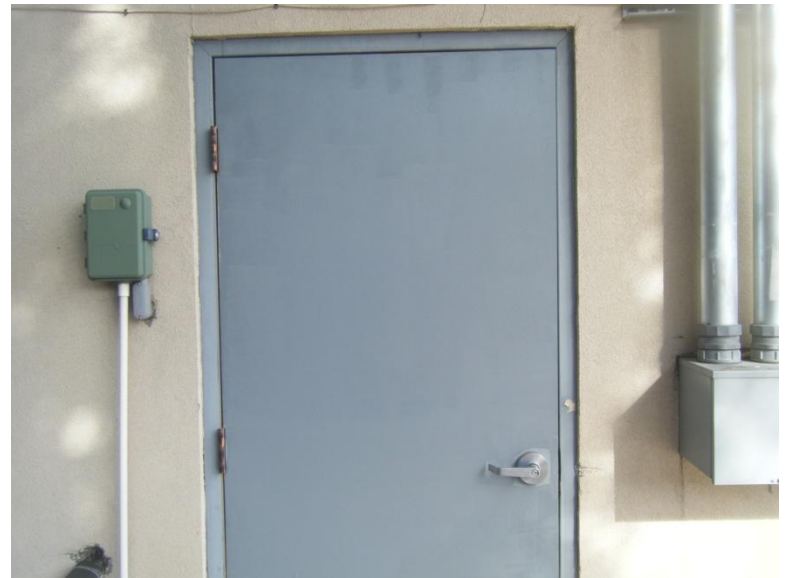


before

2790

## 1952 Montrose

after





## 2500 Montrose

before

2791



after



## 2500 Montrose

before

2792



after



# Public Property



before

2793

## 1002 Montrose

after



before

2794

## 1616 Montrose

after



before

2795

1700 Montrose

after



before

2796

1700 Montrose

after





before

2797

2000 Montrose

after



before

2798

2000 Montrose

after



## 2000 Montrose

before

2799



after



## 2710 Montrose

before

2800



after





before

2801

3300 Montrose

after



before

2802

3300 Montrose

after



## Montrose and W. Dallas

before

2803



after



before

2804



## 614 W. Gray

after





before

3300 Taft

after

2805



before

3300 Taft

after

2806





before

3300 Taft

after

2807



before

800 Alabama

after

2808





before

## 800 Alabama

after

2809



before

## 600 Hawthorne

after

2810





## 417 Hawthorne

before

2811



after



## 3500 Flora

before

2812



after





## 416 Westheimer

before

2813



after



## 1000 Peden

before

2814



after





before

1000 Peden

after

2815





# Dumpsters

before

614 W. Gray

after

2816



before

614 W. Gray

after

2817



before

614 W. Gray

after



# Improvement District # 6

Graffiti Abatement

**Before and After Pictures**

**January 13, 2011**

# Business Property



## 500 Westheimer

before

2819



after



## 414 Lovett

before

2920



after



before

2821

## 3900 Roseland

after



# Public Property



## W. Dallas and Taft

before

2822



after



## W. Dallas and Taft

before

2823



after





## W. Dallas and Taft

before

2824



after



## W. Dallas and Taft

before

2825



after





before

1500 Taft

after

2826



before

1400 Taft

after

2827





## 3200 Montrose

before

2828



after



## 4300 Montrose

before

2829



after



## 2001 Montrose

before

2830



after



## 1013 Montrose

before

2831



after





before

2832

1950 W. Dallas

after



before

2833

Taft and W. Gray

after





before

2834

## Taft and W. Gray

after



before

2835

## 614 W. Gray

after



# 1500 Stanford

before

2836



after



# 1500 Stanford

before

2837



after





before

600 W. Gray

after

2838



before

2800 Stanford

after

2839





## 500 Westheimer

before

2840



after



## 400 Lovett

before

2841



after





after



after



before

2844

## Montrose and W. Gray

after



before

2845

## Montrose and W. Gray

after





before

2846

## Montrose and W. Gray

after



before

2847

## 600 W. Clay

after





# Dumpsters

before

614 W. Gray

after

2848



before

500 Westheimer

after

2849



# Improvement District # 6

Graffiti Abatement

**Before and After Pictures**

**January 20, 2011**



# Business Property

before

2850

## 1616 Montrose

after



before

2851

## 1100 Peden

after





before

1100 Peden

after

2852



# Public Property



before

2853

## 1616 Montrose

after



before

2854

## 1700 Montrose

after





before

2855

1700 Montrose

after



before

2856

2500 Montrose

after





## 2500 Montrose

before

2857



after



## 2500 Montrose

before

2858



after



before

2859

## Montrose and W. Gray

after



before

2860

## W. Gray and Taft

after





before

1000 W. Clay

after

2861



before

3500 Flora

after

2862





before

2863

500 Westheimer

after



before

2864

500 Westheimer

after





## 600 Westheimer

before

2865



after



## 600 Westheimer

before

2866



after





## 1600 Stanford

before

2867



after



## 1600 Stanford

before

2868



after





before

1000 Bomar

after

2869



before

1000 Bomar

after

2870



# Dumpsters



before

4300 Kyle

after

2871



before

614 W. Gray

after

2872



before

2800 Taft

after

2873





# Improvement District # 6

Graffiti Abatement

**Before and After Pictures**

**January 26, 2011**

# Business Property



before

2874

## 1200 Montrose

after



before

2875

## 2900 Taft

after



# Public Property

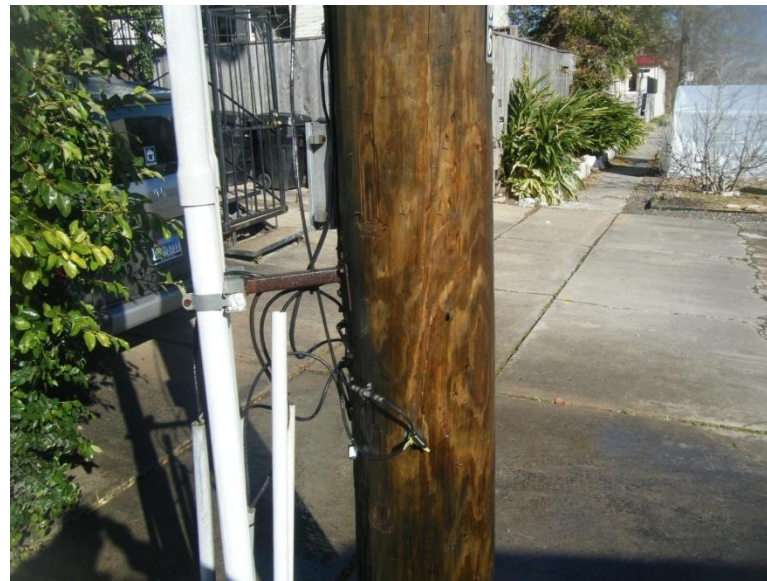


before

1320 Taft

after

2876



before

1808 Montrose

after

2877





before

2878

1808 Montrose

after



before

2879

1808 Montrose

after





before

2880

2300 Montrose

after



before

2881

2300 Montrose

after





before

2882

## 3300 Montrose

after



before

2883

## 2500 Montrose

after





before

2884

2500 Montrose

after

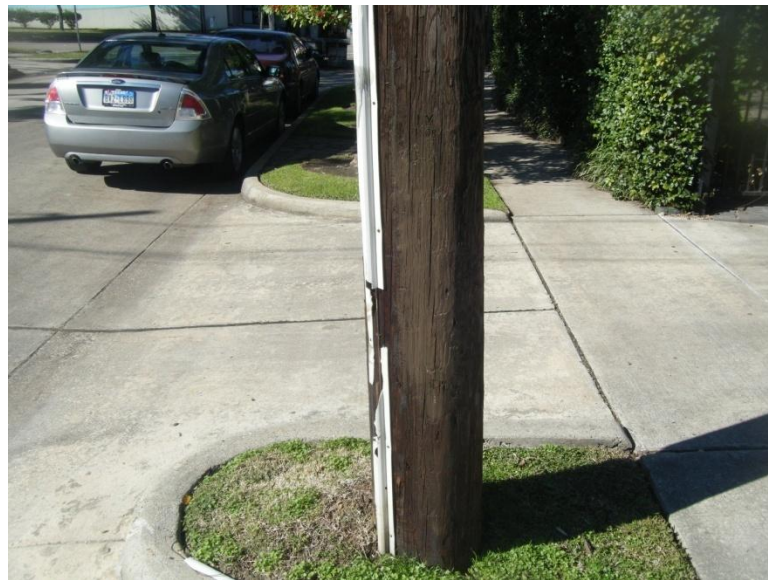


before

2885

1000 Missouri

after



before

2886

## 2400 Montrose

after



before

2887

## 1200 Montrose

after





## 1900 W. Dallas

before

2888



after



## 1300 Stanford

before

2889



after





## 1500 Columbus

before

2890



after



## 1500 Columbus

before

2891



after





before

400 Lovett

after

2892



before

3300 Taft

after

2893



## 500 Hawthorne

before

2894



after



## 3321 Stanford

before

2895



after





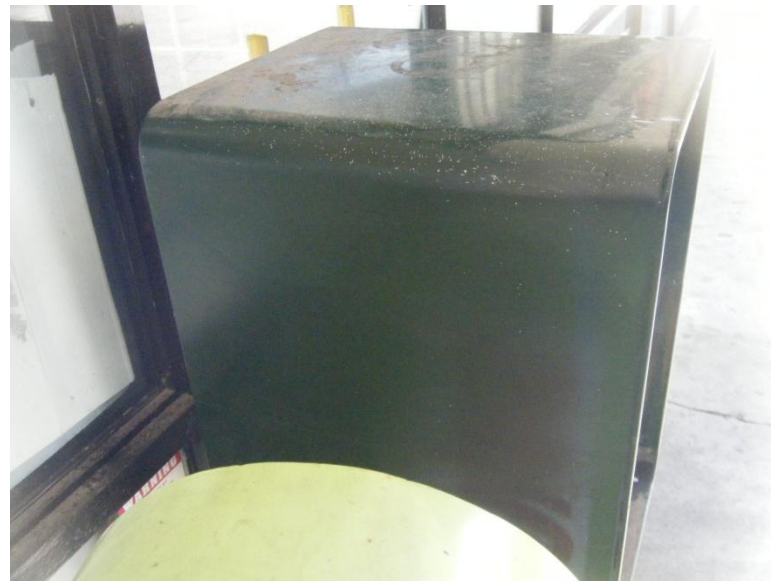
## 3321 Stanford

before

2896



after



## 3321 Stanford

before

2897



after





before

410 Lovett

after

2898



before

410 Lovett

after

2899





before

414 Lovett

after

2900



before

3300 Taft

after

2901





before

3300 Taft

after

2902



before

Taft and Westheimer

after

2903





before

2904

## Taft and Westheimer

after



before

2905

## Taft and Westheimer

after





## 500 Westheimer

before

2906



after



## 500 Westheimer

before

2907



after





# Dumpsters

before

406 Pacific

after

2908



before

602 Alabama

after

2909

